

Illustrations

Mesurments in centimetres (if not specified otherwise), height before width

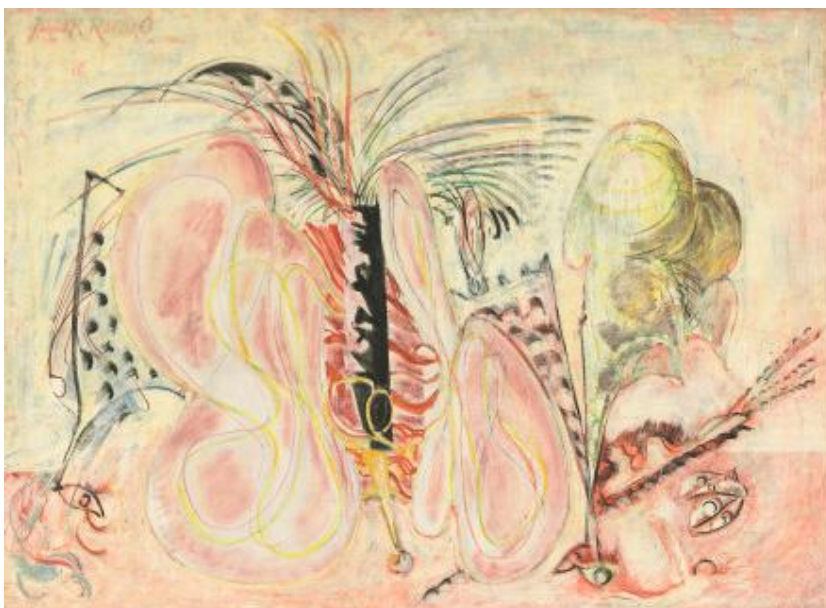
1. Mark Rothko: *The Omen of the Eagle*, 1942, oil and graphite on canvas, 65.4 x 45.1, Collection of the National Gallery of Art of United States, Washington, D.C.
2. Mark Rothko: *The Sacrifice of Iphigenia*, circa 1942, oil on canvas, 50 x37 in. Collection of Kate Rothko Prizel and Christopher Rothko.
3. Mark Rothko: *Untitled*, 1941/1942, oil on canvas, 76 x 91.3, Collection of the National Gallery of Art of United States, Washington, D.C.



4. Mark Rothko: Gethsemane, 1944, oil on canvas, 54.8 x 35.5, Collection of National Gallery of Art of United States, Washington.

5. Barnett Newman: The Song of Orpheus, 1944-1945, Oil pastel on paper, 50.8 x 37.8, Collection of the Metropolitan Museum of Art, New York

6. Mark Rothko: Birth of Cephalopods, 1944, oil on canvas, 100.7 x 80.5, Collection of the National Gallery of Art of United States, Washington, D.C.



7. Barnett Newman: Onement I, 1948, Oil on canvas and oil on masking tape on canvas, 69.2 x 41.2, Collection of the MoMA, New York

8. Barnett Newman: Abraham, 1949, oil on canvas, 210.2 x 87.7, Collection of the MoMA, New York

