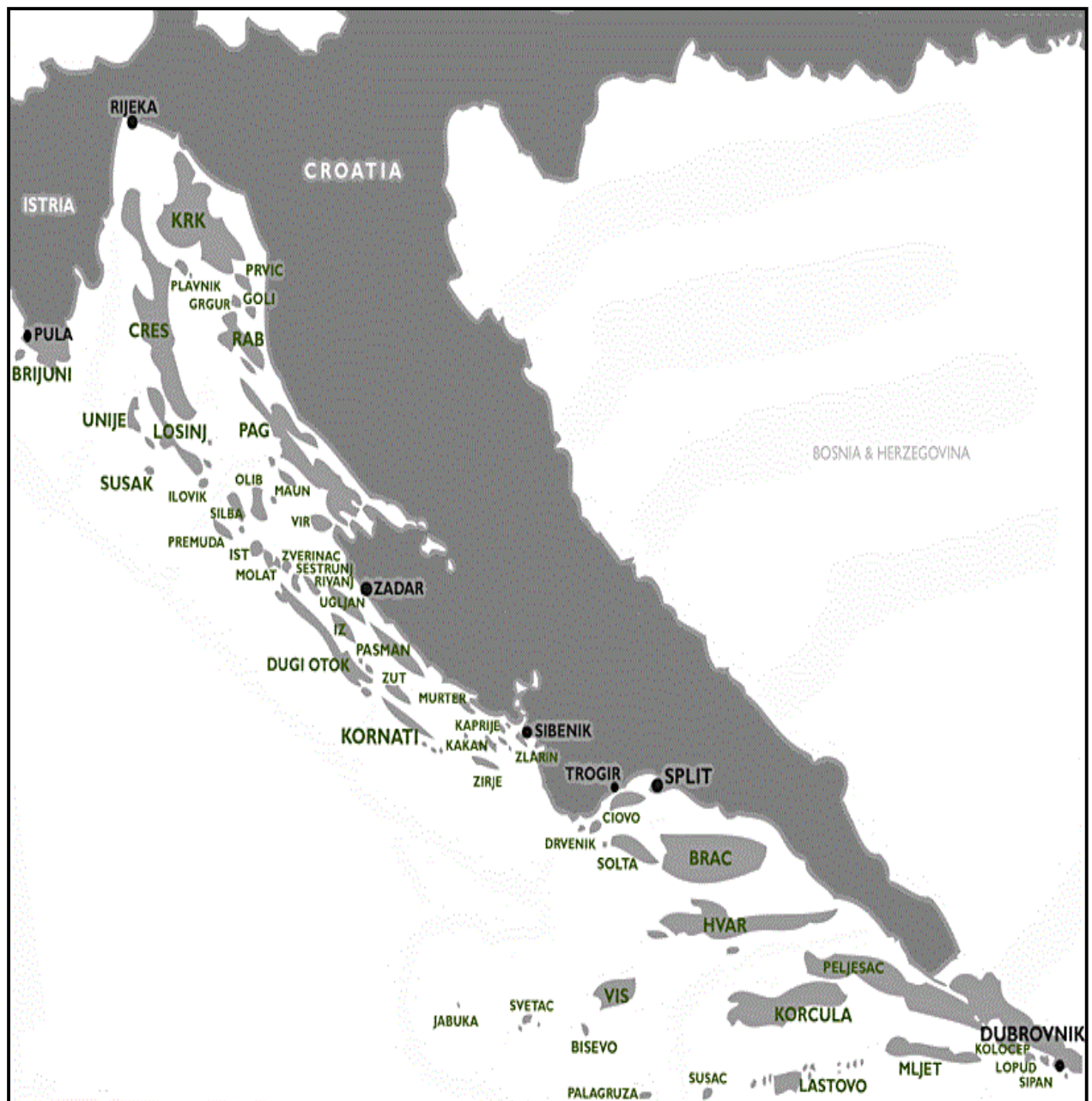


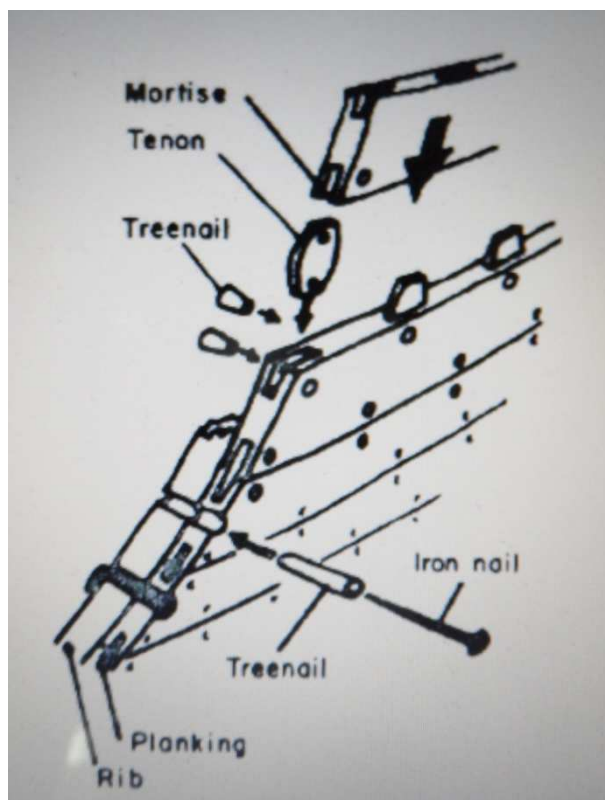
Obrazová příloha



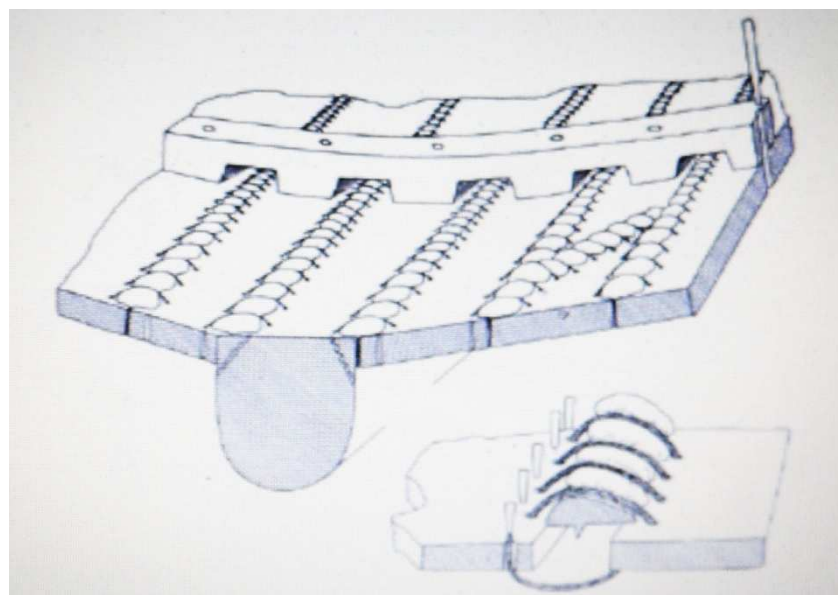
Obr.1.: Jaderské moře



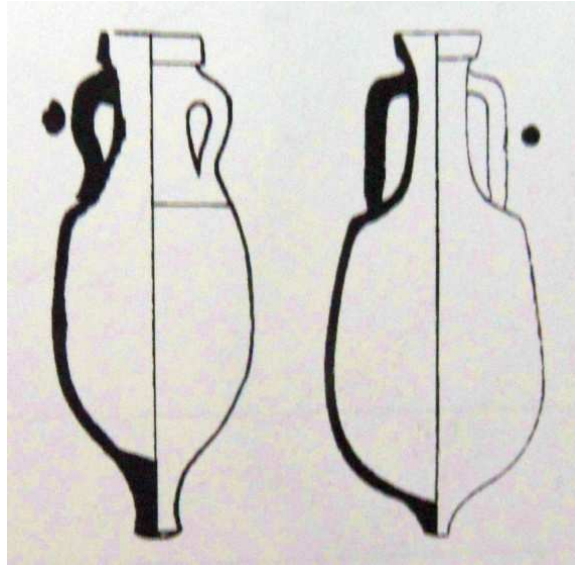
Obr.2.: Chorvatsko a jeho ostrovy



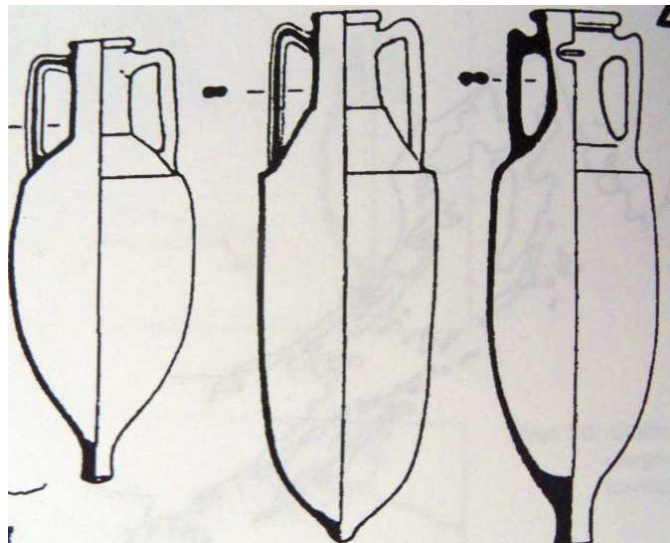
Obr.3.: Římská metoda sestavování trupu lodí



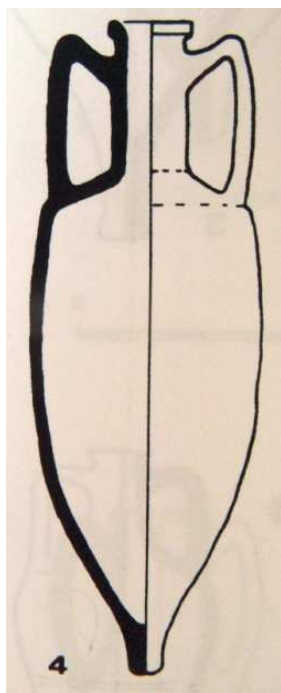
Obr.4.: Liburnská metoda sestavování trupu lodí



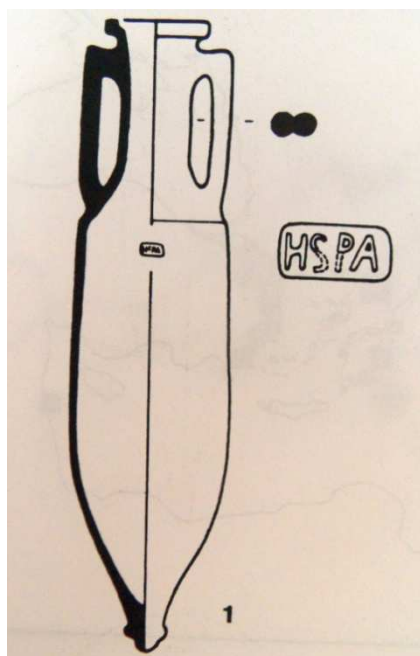
Obr.5.: Amfory typu Lamboglia 2



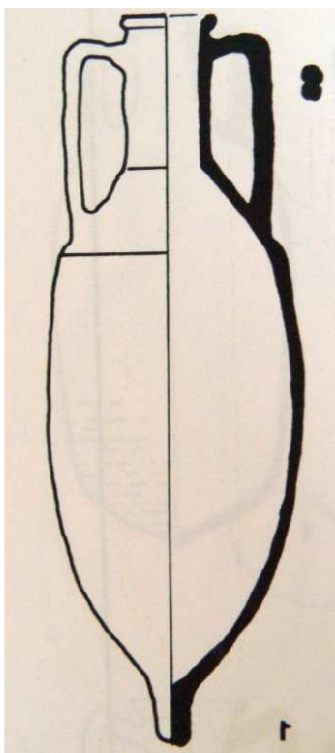
Obr.6.: Amfory typu Dressel 2-4



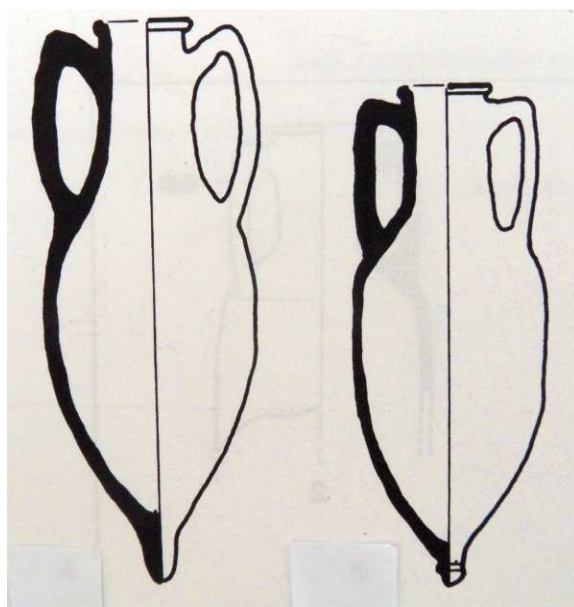
Obr.7.: Řecká varianta Dr.2-4



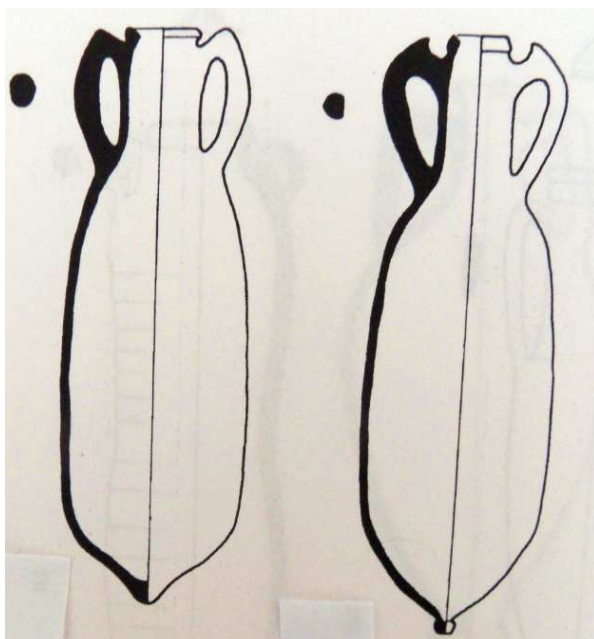
Obr.8.: Hispánská varianta Dr.2-4



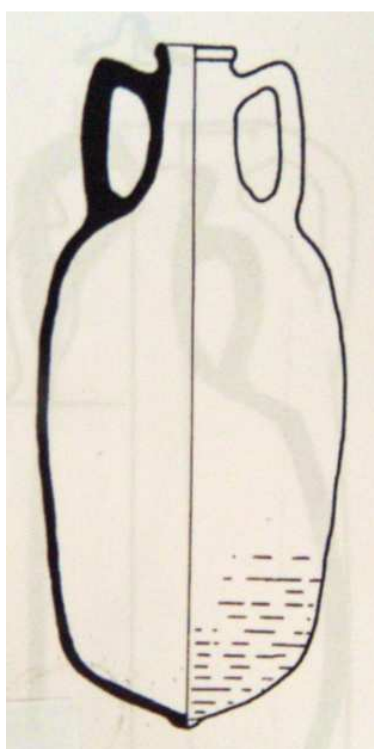
Obr.9.: Italská varianta Dr.2-4



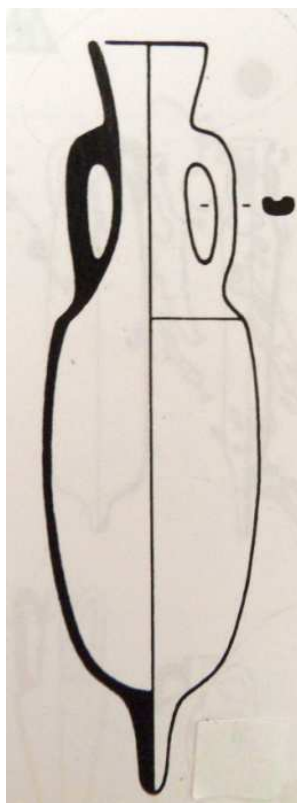
Obr.10.: Rhódsko-římské amfory



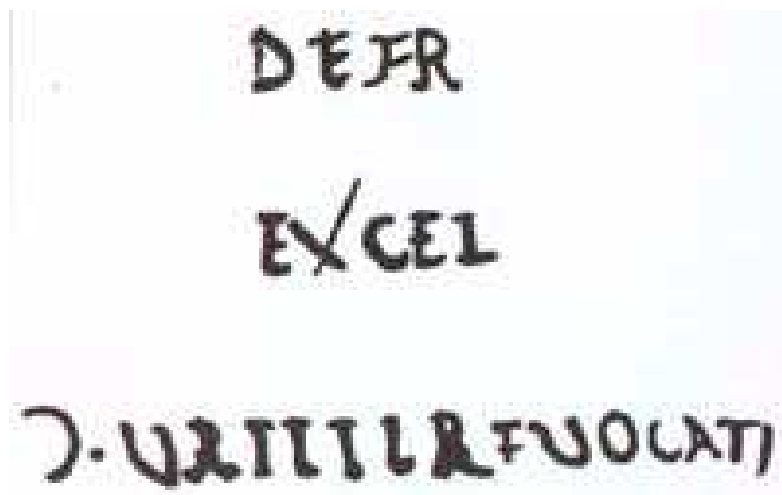
Obr.11.: Růžkovité amfory



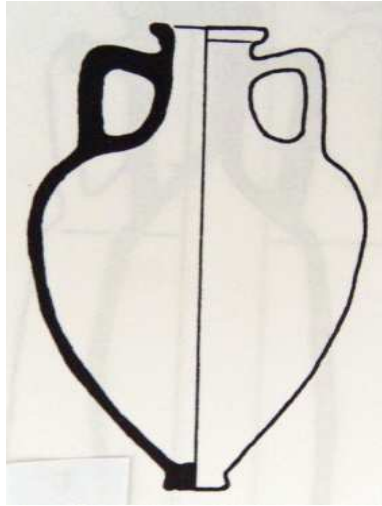
Obr.12.: Amfora typu Riley ER 1



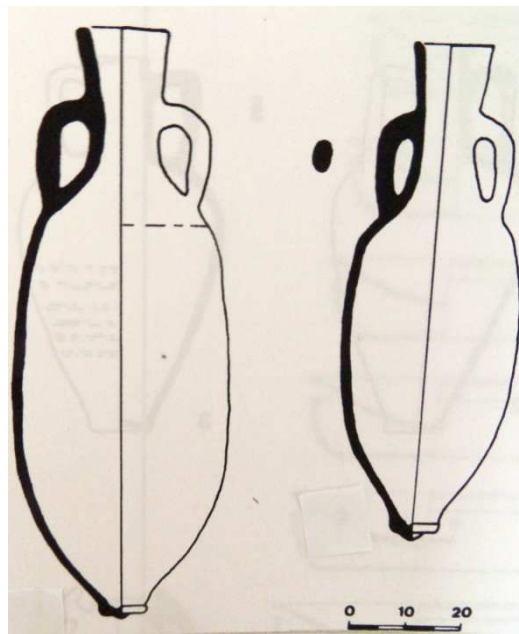
Obr.13a.: Amfora typu Haltern 70



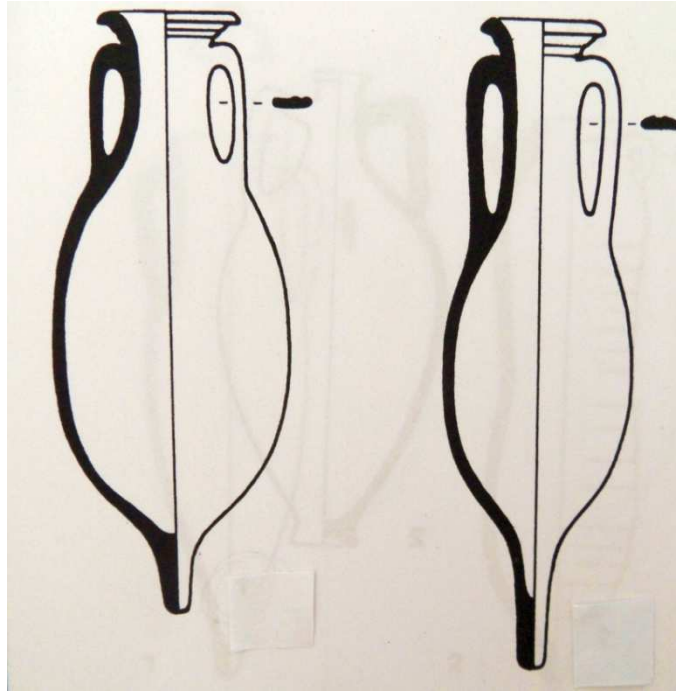
Obr.13b.: Nápis z krku amfory Haltern 70



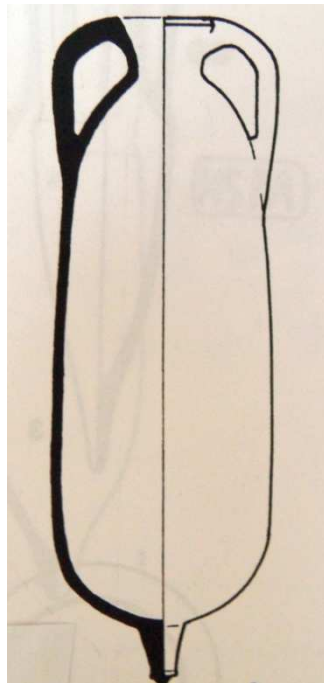
Obr.14.: Amfora typu Forlimpopoli



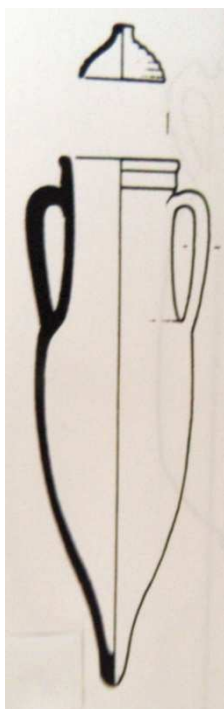
Obr.15.: Amfory typu Portorecanato



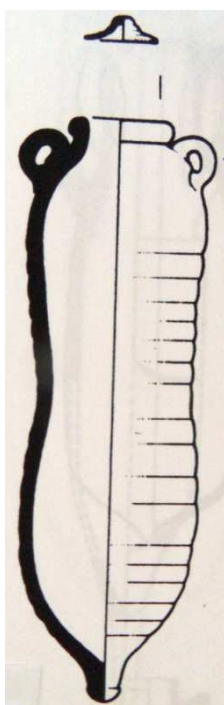
Obr.16.: Amfory typu Dr.8 aDr.10



Obr.17.: Amfora typu Keany XVI



Obr.18.: Amfora typu Dr.21/Dr.22



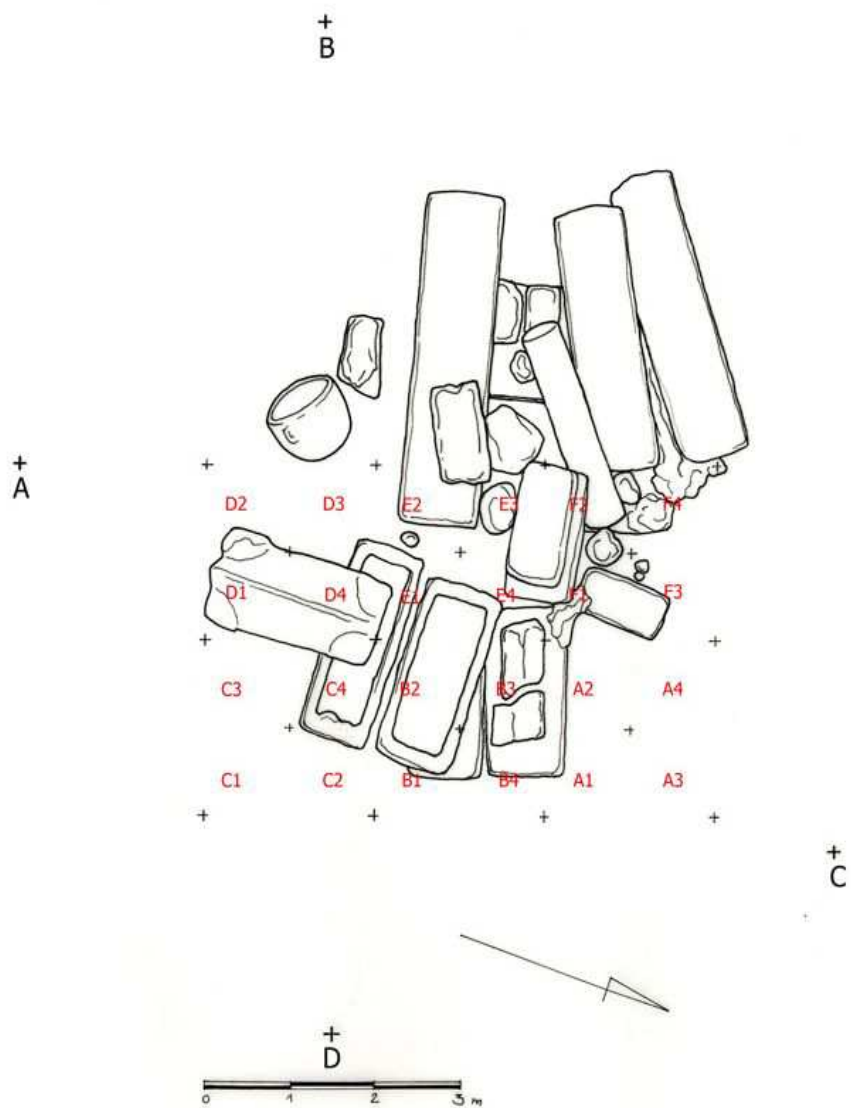
Obr.19.: Amfora typu Richborough 527



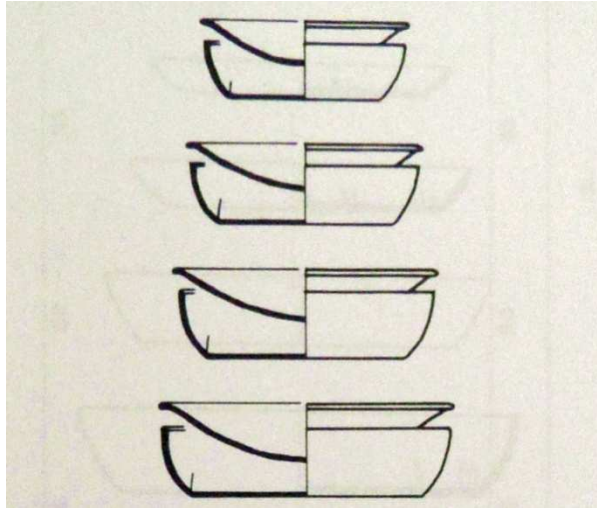
Obr.20.: Sarkofágy s víky in situ na lokalitě Sutivan



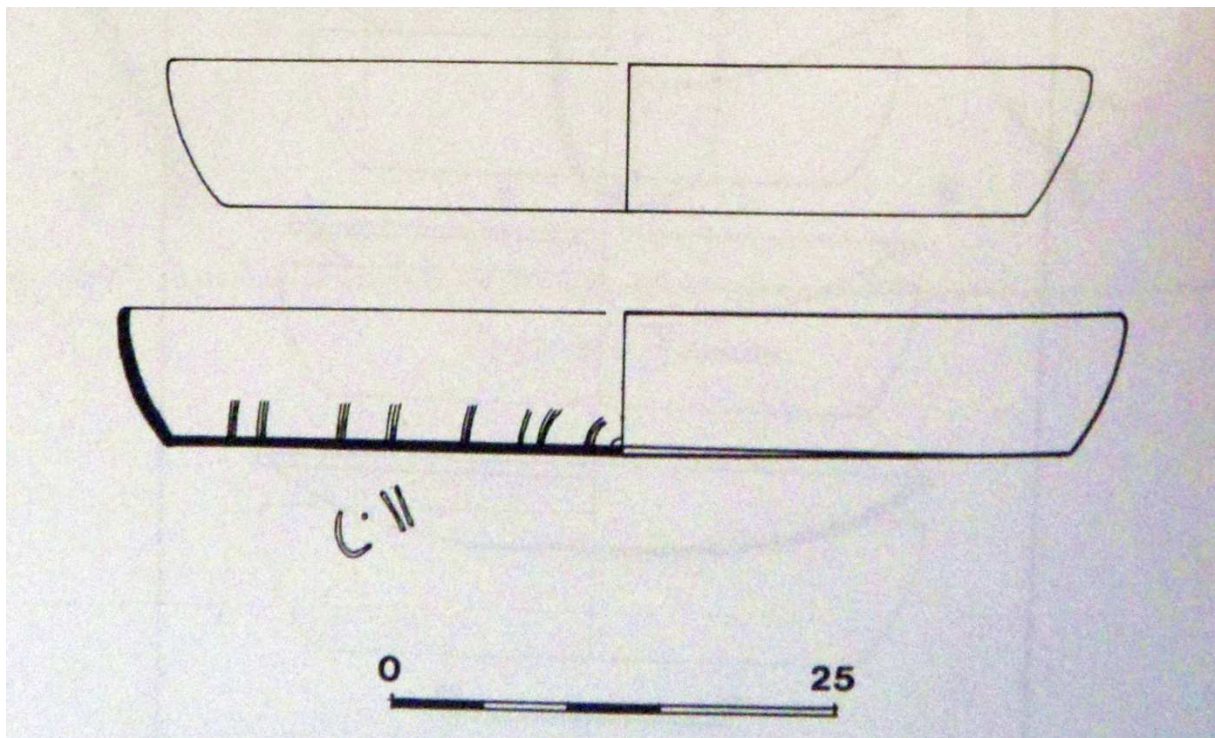
Obr.21.: Kamenná nádoba in situ na lokalitě Sutivan



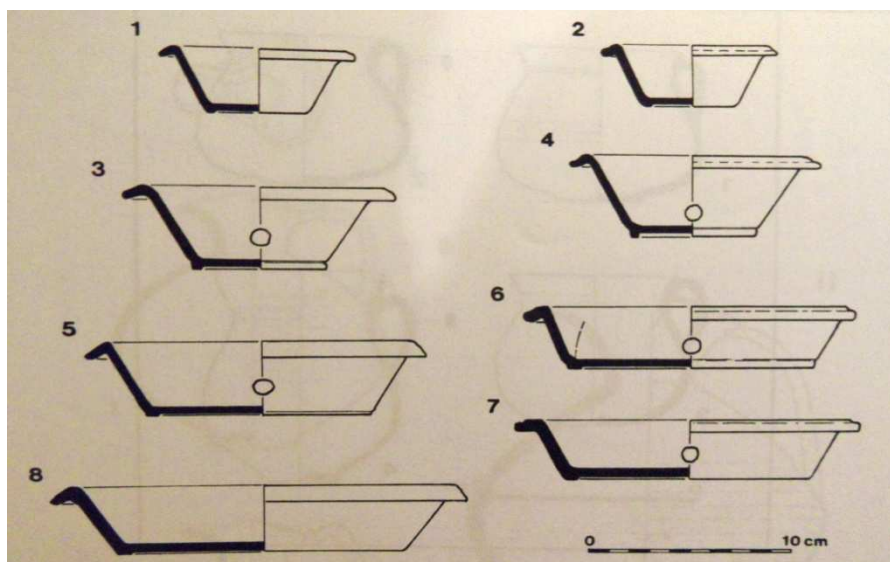
Obr.22.: Rozmístění kamenných předmětů na lokalitě Sutivan



Obr. 23.: Jihoitalská keramika – misky s víky



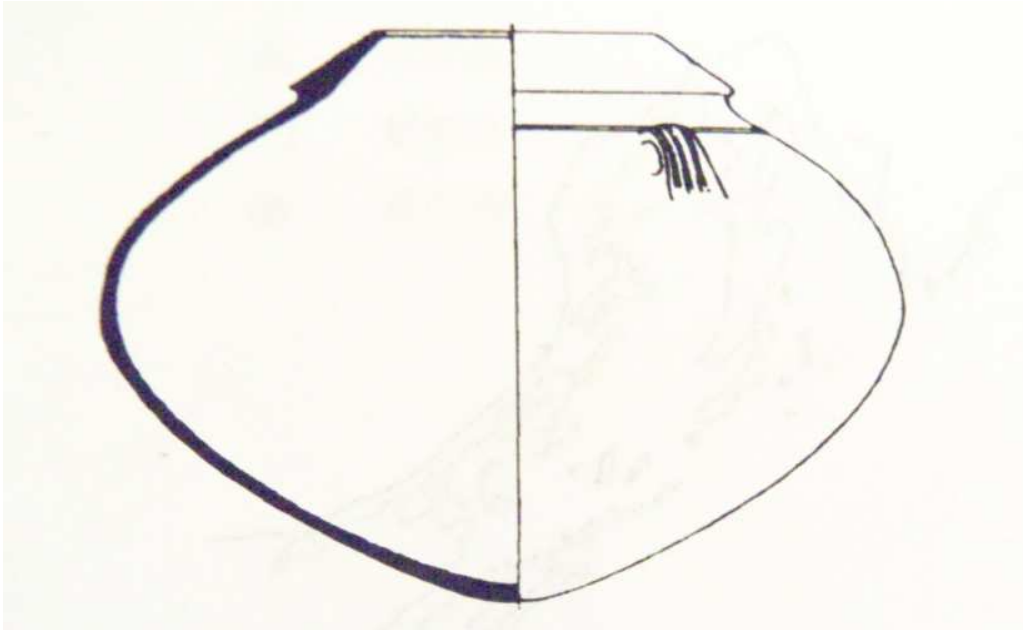
Obr.24.: Pompejské červené nádobí



Obr.25.: Hay.62/63, 74/75



Obr.26.: Východní hrubé nádobí



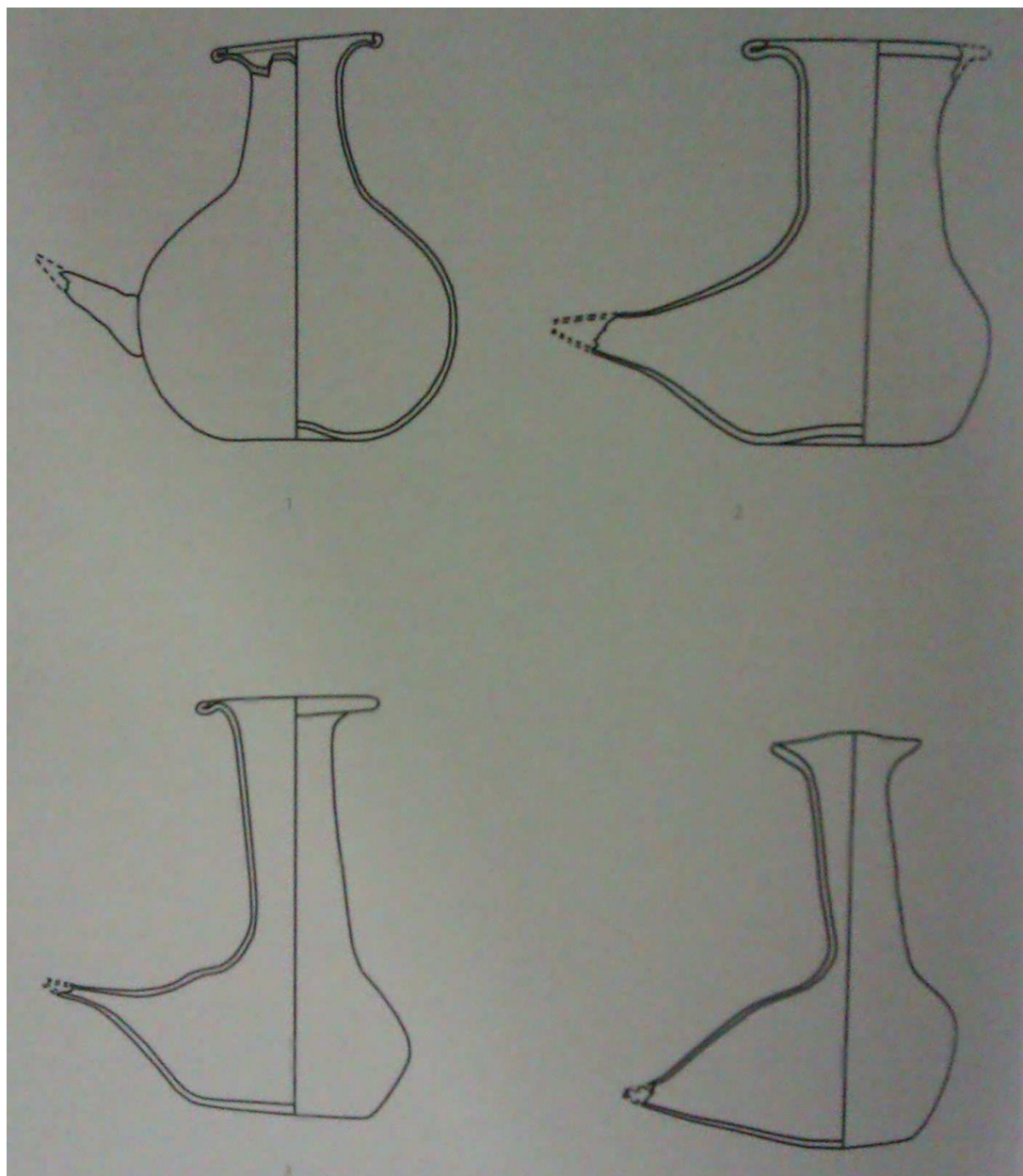
Obr.27a.: Dolium



Obr.27b.: Mortarium



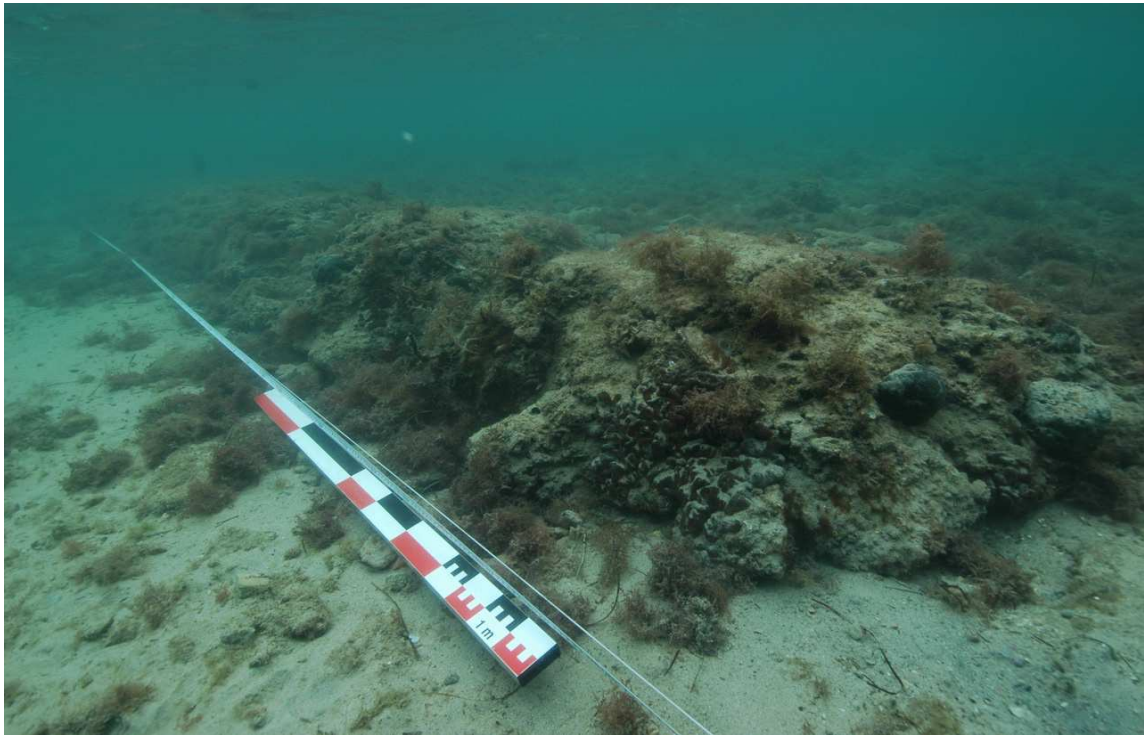
Obr.28.: Apoxyomenos in situ



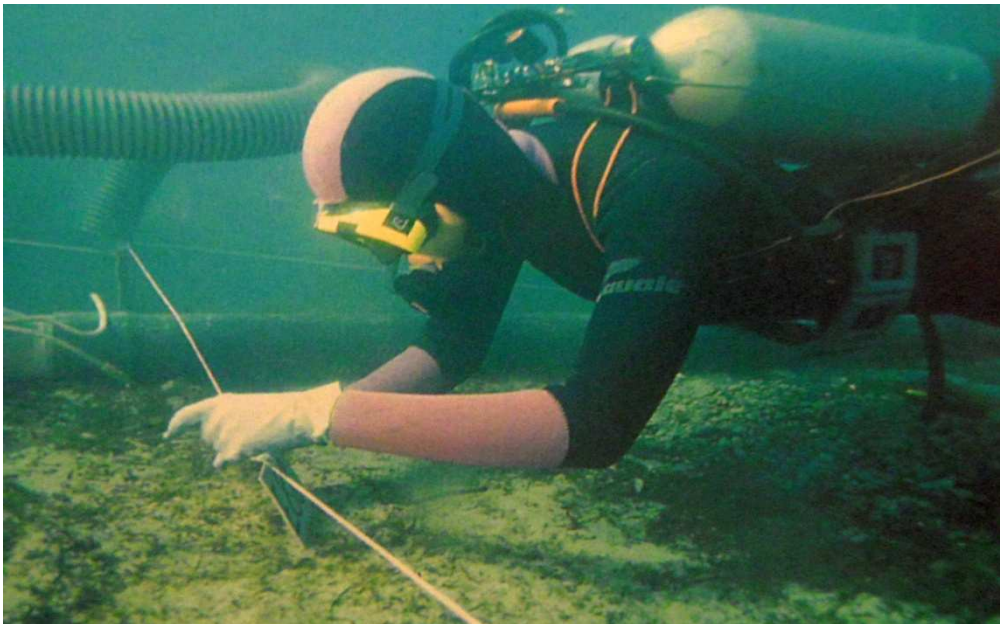
Obr.29.: Skleněné nádoby z nekropole Relja



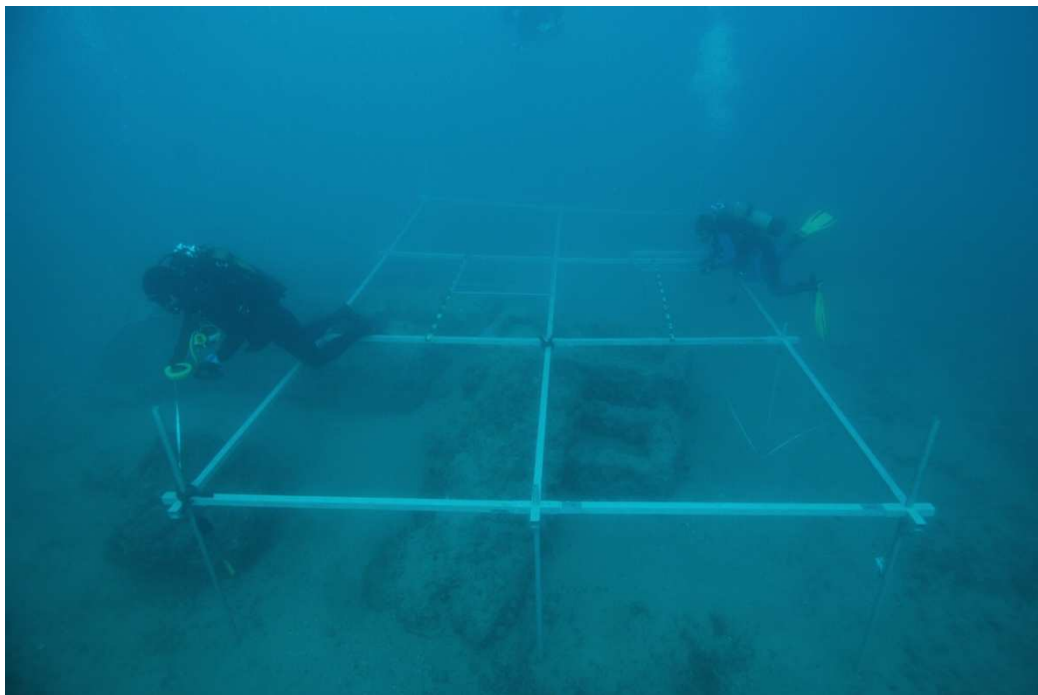
Obr.30.: Římská střešní taška z přístavu Veštar



Obr.31.: Kamenné bloky z vnější části přístavu Veštar



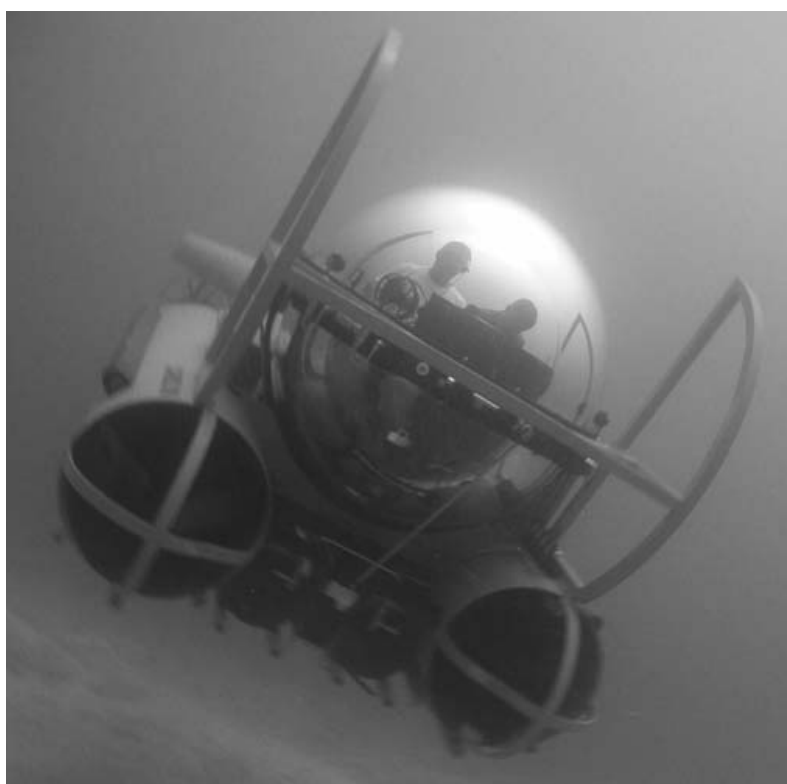
Obr.32.: Čtvercová síť z lanek a kolíků



Obr.33.: Pevná souřadnicová síť



Obr. 34.: Odsávání usazenin



Obr.35.: Dvojmístná ponorka *Caroline*



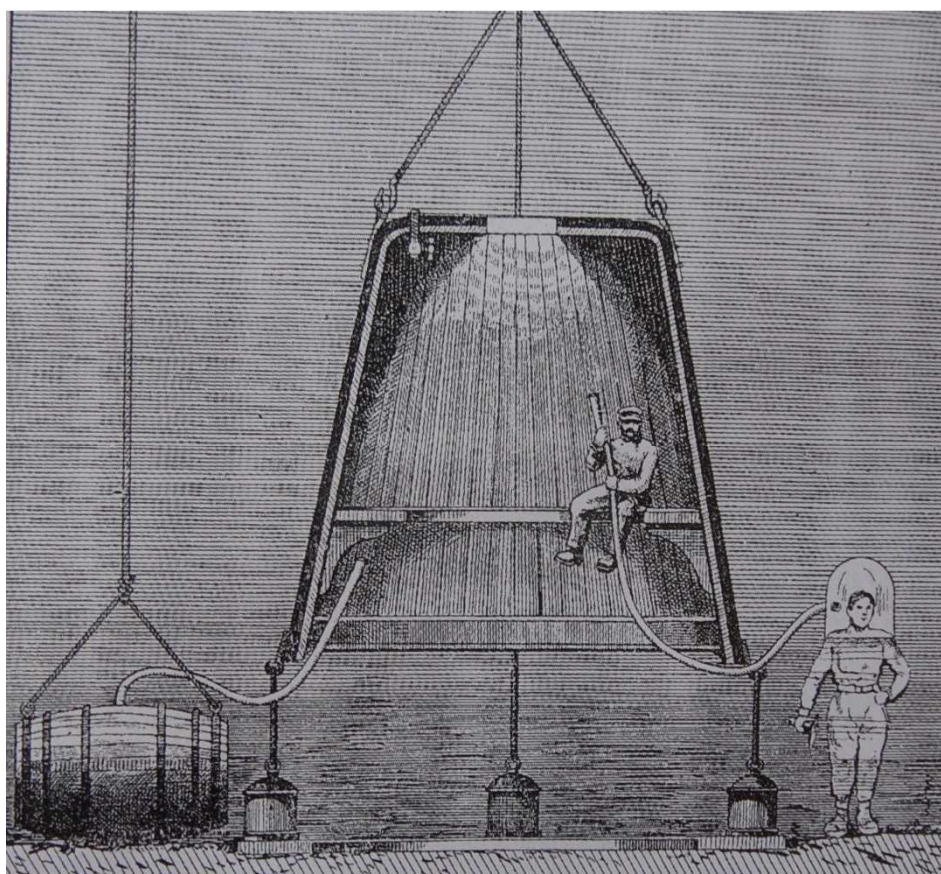
Obr.36: Dálkově ovládané vozidlo (ROV) *Nomad*



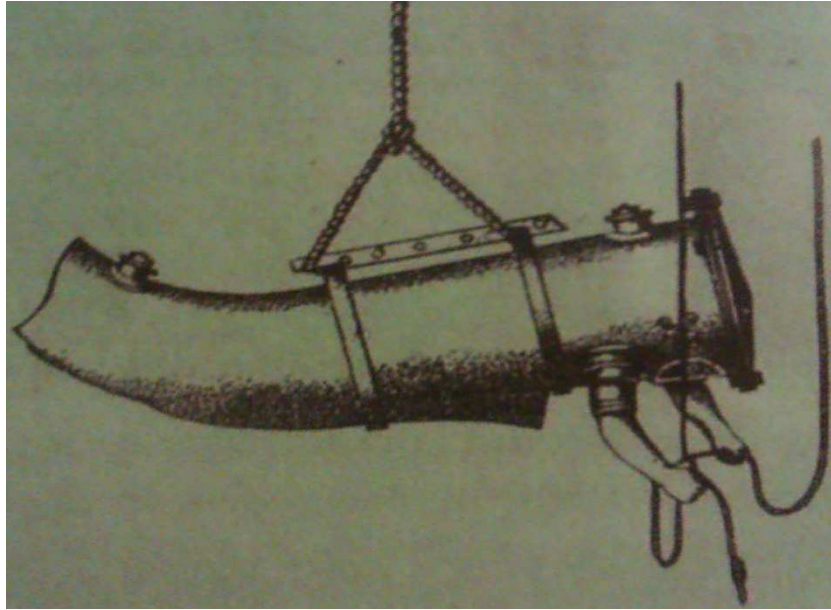
Obr.37.: Dálkově ovládané vozidlo (ROV) *Navigator*



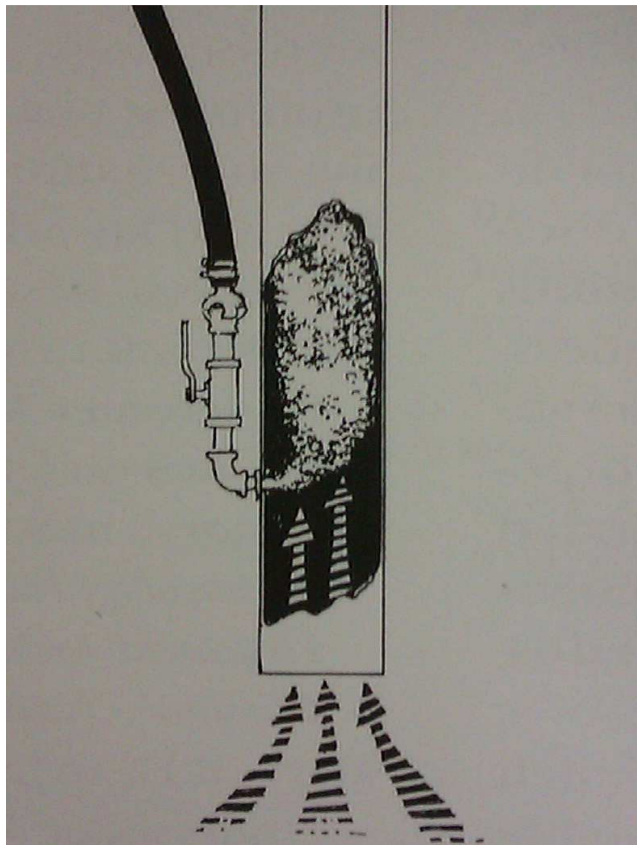
Obr.38.: Kamenný reliéf z Ashurnasirpalova paláce



Obr.39.: Systém potápěčských zvonů Edmunda Halleyho



Obr.40.: Potápěčský skafandr Johna Lethbridge



Obr.41.: Air-lift

