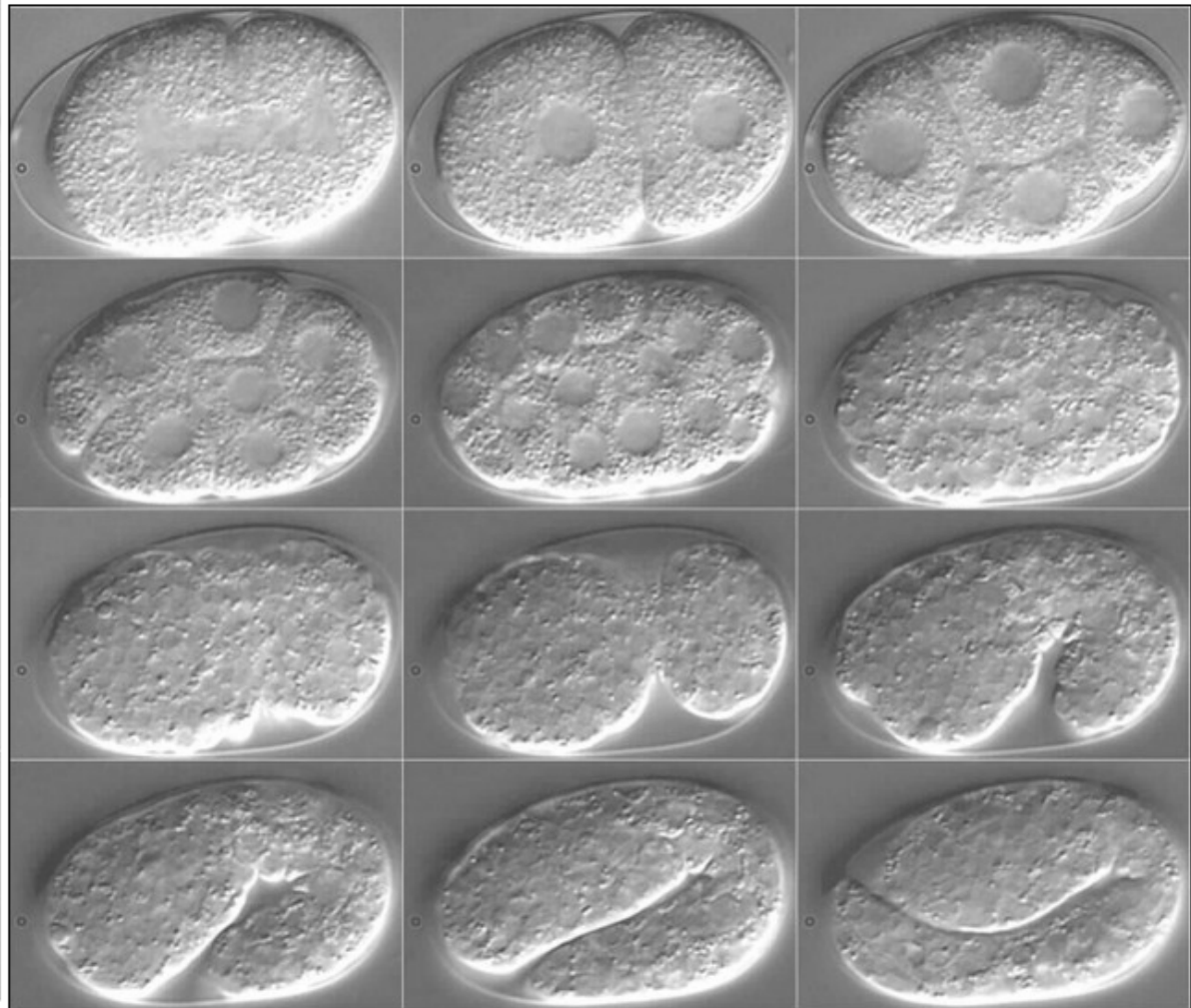


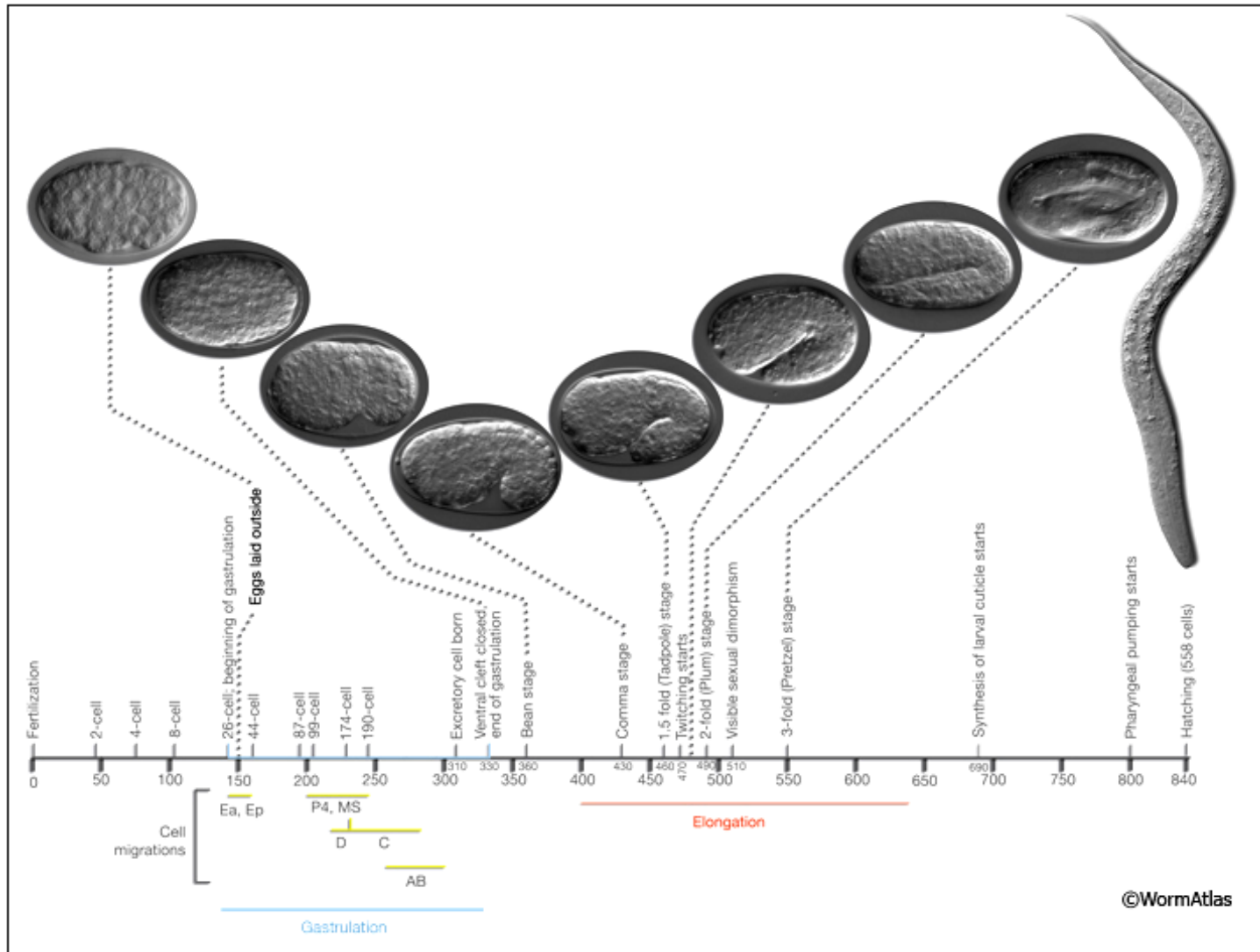
Příloha

Vývoj embrya



Obrázek č: 46: Vývoj embrya
<http://www.wormclassroom.org> (25.8.2011)

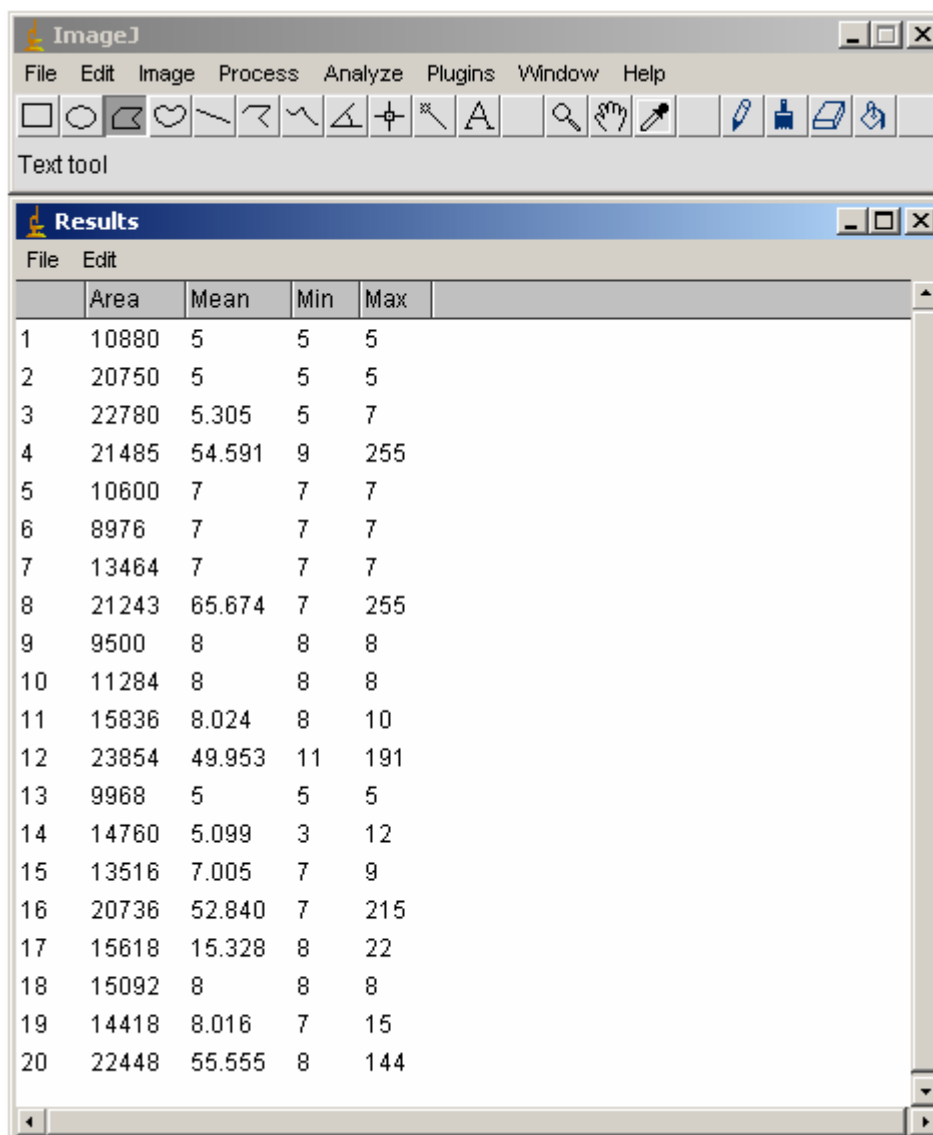
Vývoj embrya v čase



Obrázek č. 47: Vývoj embrya v čase

<http://wormatlas.org/hermaphrodite/introduction/Introframeset.html> (25.8.2011)

Způsob vyhodnocení fluorescence naměřených v programu ImageJ 1.43u.



The screenshot shows the ImageJ software interface. The main window is titled "ImageJ" and has a menu bar with "File", "Edit", "Image", "Process", "Analyze", "Plugins", "Window", and "Help". Below the menu bar is a toolbar with various icons for image manipulation. The "Text tool" is currently selected. A "Results" window is open, displaying a table of measured values. The table has five columns: "Area", "Mean", "Min", and "Max". The data is as follows:

	Area	Mean	Min	Max
1	10880	5	5	5
2	20750	5	5	5
3	22780	5.305	5	7
4	21485	54.591	9	255
5	10600	7	7	7
6	8976	7	7	7
7	13464	7	7	7
8	21243	65.674	7	255
9	9500	8	8	8
10	11284	8	8	8
11	15836	8.024	8	10
12	23854	49.953	11	191
13	9968	5	5	5
14	14760	5.099	3	12
15	13516	7.005	7	9
16	20736	52.840	7	215
17	15618	15.328	8	22
18	15092	8	8	8
19	14418	8.016	7	15
20	22448	55.555	8	144

Obrázek č. 48: Ukázka naměřených hodnot v programu ImageJ

Výstupní naměřená data

Měření fluorescence NR LPS linie				
	Plocha	hodnota	min	max
1	0.166	11,734	11,000	13,000
2	0.210	11,778	11,000	13,000
3	0.160	11,338	11,000	12,000
4	0.939	47,309	13,000	253,000
5	0.297	11,021	10,000	12,000
6	0.207	10,974	10,000	12,000
7	0.209	11,602	11,000	13,000
8	0.957	26,974	12,000	109,000
9	0.238	11,380	11,000	12,000
10	0.223	11,804	11,000	13,000
11	0.255	11,027	10,000	12,000
12	0.878	34,245	14,000	139,000
13	0.200	10,284	9,000	12,000
14	0.162	11,110	10,000	13,000
15	0.139	10,994	10,000	12,000
16	0.827	30,719	11,000	195,000
17	0.311	11,014	10,000	12,000
18	0.256	10,419	9,000	12,000
19	0.348	10,996	10,000	12,000
20	0.935	24,999	13,000	119,000
21	0.172	14,379	13,000	16,000
22	0.374	14,591	13,000	16,000
23	0.270	14,079	13,000	16,000
24	0.672	33,578	15,000	152,000
25	0.174	12,269	11,000	13,000
26	0.158	12,883	11,000	14,000
27	0.157	13,193	12,000	14,000
28	0.778	40,021	14,000	253,000
29	0.359	10,820	10,000	12,000
30	0.378	10,022	9,000	11,000
31	0.205	10,992	10,000	12,000
32	0.808	36,435	12,000	191,000
33	0.278	10,964	10,000	12,000
34	0.225	9,994	9,000	11,000
35	0.294	10,996	10,000	12,000
36	0.807	48,349	12,000	253,000
37	0.291	10,037	9,000	11,000
38	0.286	10,168	9,000	11,000
39	0.369	10,946	10,000	12,000
40	0.836	31,114	13,000	139,000

Měření fluorescence NR N2 linie				
	Plocha	Hodnota	Min.	Max.
1	0.181	13,074	12,000	14,000
2	0.203	13,383	12,000	15,000
3	0.219	14,006	13,000	15,000
4	0.985	57,743	15,000	253,000
5	0.332	13,183	11,000	18,000
6	0.336	12,306	11,000	14,000
7	0.319	12,253	11,000	13,000
8	0.857	54,882	15,000	253,000
9	0.199	11,648	11,000	13,000
10	0.328	12,076	11,000	13,000
11	0.259	11,957	11,000	13,000
12	0.938	90,643	14,000	253,000
13	0.202	11,129	10,000	12,000
14	0.351	11,069	10,000	12,000
15	0.283	12,324	11,000	16,000
16	0.992	88,708	14,000	253,000
17	0.365	12,119	11,000	13,000
18	0.316	10,992	10,000	12,000
19	0.368	12,026	11,000	13,000
20	0.949	93,362	14,000	253,000
21	0.309	14,131	13,000	21,000
22	0.312	14,248	13,000	15,000
23	0.247	14,057	13,000	15,000
24	0.947	41,142	14,000	221,000
25	0.148	12,209	11,000	14,000
26	0.191	11,985	11,000	13,000
27	0.247	12,110	11,000	13,000
28	0.949	45,288	12,000	253,000
29	0.429	13,043	12,000	14,000
30	0.374	13,370	12,000	15,000
31	0.209	12,976	12,000	14,000
32	0.968	46,416	13,000	253,000
33	0.223	12,414	11,000	16,000
34	0.228	12,017	11,000	13,000
35	0.223	12,221	11,000	19,000
36	0.943	53,986	15,000	253,000
37	0.473	11,084	10,000	12,000
38	0.252	11,974	11,000	13,000
39	0.258	11,618	11,000	13,000
40	1.025	52,188	13,000	253,000

Tabulka č. 38:

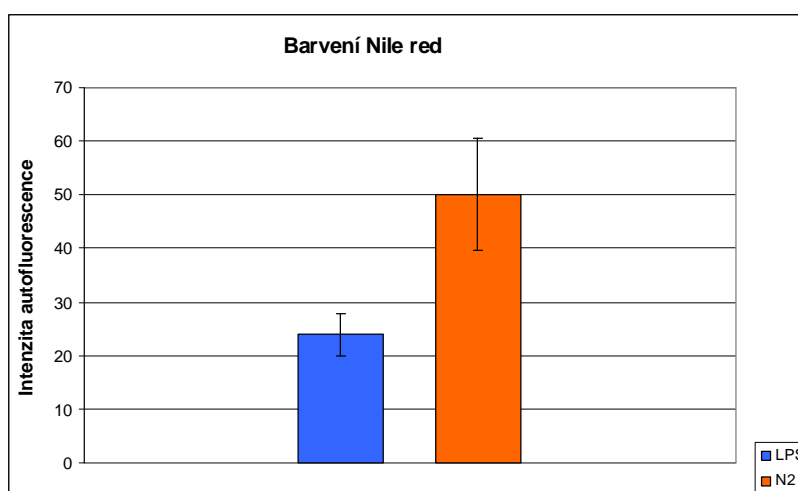
Tučně označené hodnoty označují fluorescenční body, slabě značené hodnoty jsou naměřená pozadí.

Vyhodnocení naměřených dat pro experimentální linii LPS a kontrolní linii N2

LPS linie		
Naměřená hodnota	Průměrná hodnota pozadí	Odečtené pozadí
47,309	11,617	35,692
26,974	11,199	15,775
34,245	11,404	22,841
30,719	10,796	19,923
24,999	10,810	14,189
33,578	14,350	19,228
40,021	12,782	27,239
36,435	10,611	25,824
48,349	10,651	37,698
31,114	10,384	20,730
	Průměrná hodnota pro LPS linii	23,914
	Směrodatná odhylnka	7,842
	1/2 směrodatné odchylnky	3,921

N2 linie		
Naměřená hodnota	Průměrná hodnota pozadí	Odečtené pozadí
57,743	13,488	44,255
54,882	12,581	42,301
90,643	11,894	78,749
88,708	11,507	77,201
93,362	11,712	81,650
41,142	14,145	26,997
45,288	12,101	33,187
46,416	13,130	33,286
53,986	12,217	41,769
52,188	11,559	40,629
	Průměrná hodnota pro LPS linii	50,002
	Směrodatná odhylnka	20,836
	1/2 směrodatné odchylnky	10,418

Tabulka č. 39:



Graf č. 24: Z vypočítaných průměrných hodnot sestrojíme graf a porovnáme statistickou

RT-PCR vybraných genů z imunity *Caenorhabditis elegans*

1) Lipopolysacharid *Pseudomonas aeruginosa* L7018- 108K4033

Konečná koncentrace lipopolysacharidu byla **4,1 mg/33ml** na velkou Petriho misku (průměr 9 cm). Endotoxinová jednotka deklarovaná certifikátem je **4 800 000EU/4MG**. Inkubace linií probíhala při pokojové teplotě po dobu 24 hodin. Za těchto zvolených podmínek jsme nezaznamenali žádné změny v expresi genů

Naměřená data 1. měření									
530			cP		630			cP	
True	1	Lps iLys-3	27,95	0	True	1	Lps iLys-3	27,97	0
True	2	Lps Lys-5	28,32	0	True	2	Lps Lys-5	28,4	0
True	3	Lps CLEC-60	28,79	0	True	3	Lps CLEC-60	28,76	0
True	4	Lps CLEC-60	30	0	True	4	Lps CLEC-60	30	0
True	5	Lps CLEC-71	28,32	0	True	5	Lps CLEC-71	28,32	0
True	6	Lps ABF-2	24,64	0	True	6	Lps ABF-2	24,59	0
True	7	Lps Gst-38	25,58	0	True	7	Lps Gst-38	25,58	0
True	8	Lps F44G3.2.1 a	24,78	0	True	8	Lps F44G3.2.1 a	24,76	0
True	9	Lps F44G3.2.1 b	24,81	0	True	9	Lps F44G3.2.1 b	24,8	0
True	10	LPS AMA-1 a		0	True	10	LPS AMA-1 a	23,84	0
True	11	LPS AMA-1 b		0	True	11	LPS AMA-1 b	23,97	0
True	12	LPS AMA-1 c		0	True	12	LPS AMA-1 c	23,81	0
True	13	N2 iLys-3	29,28	0	True	13	N2 iLys-3	29,26	0
True	14	N2 Lys-5	29,89	0	True	14	N2 Lys-5	29,69	0
True	15	N2 CLEC-60	29,63	0	True	15	N2 CLEC-60	29,61	0
True	16	N2 CLEC-60	31,02	0	True	16	N2 CLEC-60	30,99	0
True	17	N2 CLEC-71	29,83	0	True	17	N2 CLEC-71	29,88	0
True	18	N2 ABF-2	26,26	0	True	18	N2 ABF-2	26,39	0
True	19	N2 Gst-38	26,62	0	True	19	N2 Gst-38	26,61	0
True	20	N2 F44G3.2.1 a	25,73	0	True	20	N2 F44G3.2.1 a	25,75	0
True	21	N2 F44G3.2.1 b	25,61	0	True	21	N2 F44G3.2.1 b	25,61	0
True	22	N2 AMA-1 a		0	True	22	N2 AMA-1 a	24,68	0
True	23	N2 AMA-1 b		0	True	23	N2 AMA-1 b	25,73	0
True	24	N2 AMA-1 c		0	True	24	N2 AMA-1 c	25,6	0
True	25	Ntk iLys-3		0	True	25	Ntk iLys-3		0
True	26	Ntk Lys-5		0	True	26	Ntk Lys-5		0
True	27	Ntk CLEC-60		0	True	27	Ntk CLEC-60		0
True	28	Ntk CLEC-60		0	True	28	Ntk CLEC-60		0
True	29	Ntk CLEC-71		0	True	29	Ntk CLEC-71		0
True	30	Ntk ABF-2		0	True	30	Ntk ABF-2		0
True	31	Ntk F44G3.2.1		0	True	31	Ntk F44G3.2.1		0
True	32	Ntk AMA-1		0	True	32	Ntk AMA-1		0

Tabulka č. 40:

Vypočtená data cP 1.měření								
	cDNA	Gen	cP	mean	factor	calc. cP	cP. Lps	cP(N2)-cP(LPS)
1	LPS	iLys-3	27,970					
2	LPS	Lys-5	28,350					
3	LPS	CLEC-60	28,520					
4	LPS	CLEC-60	29,910					
5	LPS	CLEC-71	28,350					
6	LPS	ABF-2	24,580					
7	LPS	Gst-38	25,350					
8	LPS	F44G3.2.1 a	24,660					
9	LPS	F44 G3.2.1 b	24,580	24,620				
10	LPS	AMA-1 A	23,390					
11	LPS	AMA-1 B	23,790					
12	LPS	AMA-1 C	23,750	23,643	Faktor	cP(N2)	cP(LPS)	Výsledek
13	N2	iLys-3	28,130	x0,974	0,974	27,409	27,970	-0,561
14	N2	Lys-5	29,250	x0,974	0,974	28,501	28,350	0,151
15	N2	CLEC-60	29,010	x0,974	0,974	28,267	28,520	-0,253
16	N2	CLEC-60	30,500	x0,974	0,974	29,719	29,910	-0,191
17	N2	CLEC-71	28,990	x0,974	0,974	28,247	28,350	-0,103
18	N2	ABF-2	24,820	x0,974	0,974	24,184	24,580	-0,396
19	N2	Gst-38	26,380	x0,974	0,974	25,704	25,350	0,354
20	N2	F44G3.2.1	24,750					
21	N2	F44 G3.2.1 b	24,790	24,770	0,974	24,135	24,620	-0,485
22	N2	AMA-1 A	24,200					
23	N2	AMA-1 B	24,330					
24	N2	AMA-1 C **	23,450	24,265	0,974	23,643	23,643	0,000
25	ntk	iLys-3						
26	ntk	Lys-5						
27	ntk	CLEC-60						
28	ntk	CLEC-60						
29	ntk	CLEC-71						
30	ntk	ABF-2						
31	ntk	F44G3.2.1						
32	ntk	AMA-1						

Výpočet faktoru	
AMA-1 LPS	23,643
AMA-1 N2	24,265
Faktor	0,974

$$Faktor = \frac{AMA1LPS}{AMA1N2}$$

$$výsledek = (cP(N2) \cdot faktor) - cP(LPS)$$

Tabulka č. 41

$$Faktor = \frac{AMA1LPS}{AMA1N2}$$

Naměřená data 2. měření										
530			cP			640			cP	
True	1	Lps iLys-3	27,97	0		True	1	Lps iLys-3	27,97	0
True	2	Lps Lys-5	28,35	0		True	2	Lps Lys-5	28,6	0
True	3	Lps CLEC-60	28,52	0		True	3	Lps CLEC-60	28,55	0
True	4	Lps CLEC-60	29,91	0		True	4	Lps CLEC-60	29,84	0
True	5	Lps CLEC-71	28,35	0		True	5	Lps CLEC-71	28,36	0
True	6	Lps ABF-2	24,58	0		True	6	Lps ABF-2	24,62	0
True	7	Lps Gst-38	25,35	0		True	7	Lps Gst-38	25,33	0
True	8	Lps F44G3.2.1 a	24,66	0		True	8	Lps F44G3.2.1 a	24,66	0
True	9	Lps F44G3.2.1 b	24,58	0		True	9	Lps F44G3.2.1 b	24,6	0
True	10	LPS AMA-1 a		0		True	10	LPS AMA-1 a	23,39	0
True	11	LPS AMA-1 b		0		True	11	LPS AMA-1 b	23,79	0
True	12	LPS AMA-1 c		0		True	12	LPS AMA-1 c	23,75	0
True	13	N2 iLys-3	28,13	0		True	13	N2 iLys-3	28,17	0
True	14	N2 Lys-5	29,25	0		True	14	N2 Lys-5	29,07	0
True	15	N2 CLEC-60	29,01	0		True	15	N2 CLEC-60	29,02	0
True	16	N2 CLEC-60	30,5	0		True	16	N2 CLEC-60	30,54	0
True	17	N2 CLEC-71	28,99	0		True	17	N2 CLEC-71	29,04	0
True	18	N2 ABF-2	24,82	0		True	18	N2 ABF-2	27,72	0
True	19	N2 Gst-38	26,38	0		True	19	N2 Gst-38	26,44	0
True	20	N2 F44G3.2.1 a	24,75	0		True	20	N2 F44G3.2.1 a	24,78	0
True	21	N2 F44G3.2.1 b	24,79	0		True	21	N2 F44G3.2.1 b	24,77	0
True	22	N2 AMA-1 a		0		True	22	N2 AMA-1 a	24,2	0
True	23	N2 AMA-1 b		0		True	23	N2 AMA-1 b	24,33	0
True	24	N2 AMA-1 c		0		True	24	N2 AMA-1 c	23,45	* 0
True	25	Ntk iLys-3		0		True	25	Ntk iLys-3		0
True	26	Ntk Lys-5	34,14	0		True	26	Ntk Lys-5		0
True	27	Ntk CLEC-60	[35.42]	0		True	27	Ntk CLEC-60		0
True	28	Ntk CLEC-60		0		True	28	Ntk CLEC-60		0
True	29	Ntk CLEC-71		0		True	29	Ntk CLEC-71		0
True	30	Ntk ABF-2		0		True	30	Ntk ABF-2		0
True	31	Ntk F44G3.2 .1	[28.58]	0		True	31	Ntk F44G3.2.1		0
True	32	Ntk AMA-1		0		True	32	Ntk AMA-1		0

Tabulka č. 42:

Vypočtená data cP 2.měření

	cDNA	Gen	cP	mean	factor	calc. cP	cP. Lps	N2-LPS
1	LPS	iLys-3	27,950					
2	LPS	Lys-5	28,320					
3	LPS	CLEC-60	28,790					
4	LPS	CLEC-60	30,000					
5	LPS	CLEC-71	28,320					
6	LPS	ABF-2	24,640					
7	LPS	Gst-38	25,580					
8	LPS	F4463.2 .1a	24,780					
9	LPS	F4463.2.1 b	24,810	24,795				
10	LPS	AMA-1 A	23,840					
11	LPS	AMA-1 B	23,970					Výsledek
12	LPS	AMA-1 C	23,810	23,873	Faktor	cP(N2)	cP(LPS)	cP(N2)-cP(LPS)
13	N2	iLys-3	29,280	x0,930	0,930	27,236	28,320	-0,517
14	N2	Lys-5	29,890	x0,931	0,930	27,803	28,790	-1,228
15	N2	CLEC-60	29,630	x0,932	0,930	27,562	30,000	-1,145
16	N2	CLEC-60	31,020	x0,933	0,930	28,855	28,320	-0,572
17	N2	CLEC-71	29,830	x0,934	0,930	27,748	24,640	-0,213
18	N2	ABF-2	26,260	x0,935	0,930	24,427	25,580	-0,818
19	N2	Gst-38	26,620	x0,936	0,930	24,762		
20	N2	F4463.2.1 a	25,730				24,795	-0,917
21	N2	F4463.2.1 b	25,610	25,670	0,930	23,878		
22	N2	AMA-1 A	24,680	*				
23	N2	AMA-1 B	25,730				23,873	0,000
24	N2	AMA-1 C	25,600	25,665	0,930	23,873		
25	ntk	iLys-3						
26	ntk	Lys-5						
27	ntk	CLEC-60						
28	ntk	CLEC-60						
29	ntk	CLEC-71						
30	ntk	ABF-2						
31	ntk	F4463.2.1						
32	ntk	AMA-1						

Výpočet faktoru	
AMA-1 LPS	23,873
AMA-1 N2	25,665
Faktor	0,930

Tabulka č. 43:

Naměřená data 3. měření									
530					640				
True	1	LPS Lys-1	20,26	0	True	1	LPS Lys-1	20,25	0
True	2	LPS Lys-7	21,2	0	True	2	LPS Lys-7	21,17	0
True	3	LPS Cri-1	28,48	0	True	3	LPS Cri-1	28,49	0
True	4	LPS Cri-3	21,53	0	True	4	LPS Cri-3	21,53	0
True	5	LPS Lbp-1	20,98	0	True	5	LPS Lbp-1	21,07	0
True	6	LPS Lbp-7	23,76	0	True	6	LPS Lbp-7	23,76	0
True	7	LPS F44G3.2.1	27,25	0	True	7	LPS F44G3.2.1	27,26	0
True	8	LPS Gst-38 a	25,86	0	True	8	LPS Gst-38 a	25,85	0
True	9	LPS Gst-38 b	25,78	0	True	9	LPS Gst-38 a	25,78	0
True	10	LPS AMA-1 A		0	True	10	LPS AMA-1 A	26,86	0
True	11	LPS AMA-1 B		0	True	11	LPS AMA-1 B	27,07	0
True	12	LPS AMA-1 C		0	True	12	LPS AMA-1 C	27,06	0
True	13	N2 Lys-1	19,73	0	True	13	N2 Lys-1	19,74	0
True	14	N2 Lys-7	20,89	0	True	14	N2 Lys-7	20,91	0
True	15	N2Cri-1	27,68	0	True	15	N2 Cri-1	27,67	0
True	16	N2Cri-3	21,03	0	True	16	N2 Cri-3	21,01	0
True	17	N2 Lbp-1	20,66	0	True	17	N2 Lbp-1	20,7	0
True	18	N2 Lbp-7	23,42	0	True	18	N2 Lbp-7	23,33	0
True	19	N2 F44G3.2.1	24,65	0	True	19	N2 F44G3.2.1	24,67	0
True	20	Gst-38 a	25,62	0	True	20	N2 Gst-38 a	25,61	0
True	21	Gst-38 b	25,59	0	True	21	N2 Gst-38 b	25,61	0
True	22	N2 AMA-1 A		0	True	22	N2 AMA-1 A	25,9	0
True	23	N2 AMA-1 B		0	True	23	N2 AMA-1 B	26,03	0
True	24	N2 AMA-1 C		0	True	24	N2 AMA-1 C	26,18	0
True	25	NTK Lys-1		0	True	25	NTK Lys-1		0
True	26	NTK Lys-7	[31.75]	0	True	26	NTK Lys-7		0
True	27	NTK Cri-1		0	True	27	NTK Cri-1		0
True	28	NTK Cri-3		0	True	28	NTK Cri-3		0
True	29	NTK Lbp-1	[4.22]	0	True	29	NTK Lbp-1		0
True	30	NTK Lbp-7		0	True	30	NTK Lbp-7		0
True	31	NTK F44G3.2.1		0	True	31	NTK F44G3.2.1		0
True	32	NTK Gst-38-b	32,01	0	True	32	NTK Gst-38	32,02	0

Tabulka č. 44:

Vypočtená data cP 3.měření								
	cDNA	Gen	cP	mean	factor	calc. cP	cP. Lps	cP(N2)-cP(LPS)
1	LPS	Lys-1	20,260					
2	LPS	Lys-7	21,200					
3	LPS	Cri-1	28,480					
4	LPS	Cri-3	21,530					
5	LPS	Lbp-1	20,980					
6	LPS	Lbp-7	23,760					
7	LPS	F44G3.2.1	27,250					
8	LPS	Gst-38	25,860					
9	LPS	Gst-39	25,780	25,820				
10	LPS	AMA-1 A	26,860					
11	LPS	AMA-1 B	27,070					
12	LPS	AMA-1 C	27,060	26,997	Faktor	cP(N2)	cP(LPS)	cP(N2)-cP(LPS)
13	N2	Lys-1	19,730	x 1,037	1,037	20,457	20,260	0,197
14	N2	Lys-7	20,890	x 1,038	1,037	21,660	21,200	0,460
15	N2	Cri-1	27,680	x 1,039	1,037	28,701	28,480	0,221
16	N2	Cri-3	21,030	x 1,040	1,037	21,805	21,530	0,275
17	N2	Lbp-1	20,660	x 1,041	1,037	21,422	20,980	0,442
18	N2	Lbp-7	23,420	x 1,042	1,037	24,284	23,760	0,524
19	N2	F44G3.2.1	24,650	x 1,043	1,037	25,559	27,250	-1,691
20	N2	Gst-38	25,620					
21	N2	Gst-38	25,590	25,605	1,037	26,549	25,820	0,729
22	N2	AMA-1 A	25,900					
23	N2	AMA-1 B	26,030					
24	N2	AMA-1 C	26,180	26,037		26,997	26,997	0,000
25	ntk	Lys-1						
26	ntk	Lys-7						
27	ntk	Cri-1						
28	ntk	Cri-3						
29	ntk	Lbp-1						
30	ntk	Lbp-7						
31	ntk	F44G3.2.1						
32	ntk	Gst-38						

Výpočet faktoru	
AMA-1 LPS	26,997
AMA-1 N2	26,037
Faktor	1,037

Tabulka č. 45:

2) Lipopolysacharid *Pseudomonas aeruginosa* L7018- 108K4033

Konečná koncentrace lipopolysacharidu byla **17mg/10ml** na malou Petriho misku (průměr 5,5 cm). Endotoxinová jednotka udaná certifikátem je **20 400 000 EU/17MG**. Inkubace synchronizovaného L1 stadia, linie N2 probíhala 3 dny při 20°C.

Naměřená data 1A.měření									
530					640				
True	1	LPS Lys-1	20,26	0	True	1	LPS Lys-1 7347/8 *29	20,25	0
True	2	LPS Lys-7	21,2	0	True	2	LPS Lys-7 7349/50 *3	21,17	0
True	3	LPS Cri-1	28,48	0	True	3	LPS Cri-1 7335/6 *56	28,49	0
True	4	LPS Cri-3	21,53	0	True	4	LPS Cri-3 7357/8 *86	21,53	0
True	5	LPS Lbp-1	20,98	0	True	5	LPS Lpb-1 7359/60 *7	21,07	0
True	6	LPS Lbp-7	23,76	0	True	6	LPS Lpb-7 7361/2 *55	23,76	0
True	7	LPS F44632	27,25	0	True	7	LPS F44632 7367/8 *113	27,26	0
True	8	LPS Gst-38	25,86	0	True	8	LPS Gst-38 7351/2 *7 a	25,85	0
True	9	LPS Gst-38	25,78	0	True	9	LPS Gst-38 7351/2 *7 b	25,78	0
True	10	LPS AMA-1 A		0	True	10	LPS AMA-1 A	26,86	0
True	11	LPS AMA-1 B		0	True	11	LPS AMA-1 B	27,07	0
True	12	LPS AMA-1 C		0	True	12	LPS AMA-1 C	27,06	0
True	13	N2 Lys-1	19,73	0	True	13	N2 lys-1	19,74	0
True	14	N2 lys-7	20,89	0	True	14	N2 lys-7	20,91	0
True	15	N2 Cri-1	27,68	0	True	15	N2 cri-1	27,67	0
True	16	N2 Cri-3	21,03	0	True	16	N2 cri-3	21,01	0
True	17	N2 Lbp-1	20,66	0	True	17	N2 lbp-1	20,7	0
True	18	N2 Lbp-7	23,42	0	True	18	N2 lbp-7	23,33	0
True	19	N2 F44G3.2.1	24,65	0	True	19	N2F44G3.2.1	24,67	0
True	20	N2 Gst-38	25,62	0	True	20	N2 gst-38	25,61	0
True	21	N2 Gst-38	25,59	0	True	21	N2 gst-38	25,61	0
True	22	N2 AMA-1 A		0	True	22	N2 AMA-1 A	25,9	0
True	23	N2 AMA-1 B		0	True	23	N2 AMA-1 B	26,03	0
True	24	N2 AMA-1C		0	True	24	N2 AMA-1C	26,18	0
True	25	NTK Lys-1		0	True	25	NTK Lys-1		0
True	26	NTK Lys-7	[31.75]	0	True	26	NTK Lys-7		0
True	27	NTK Cri-1		0	True	27	NTK Cri-1		0
True	28	NTK Cri-3		0	True	28	NTK Cri-3		0
True	29	NTK Lbp-1	[4.22]	0	True	29	NTK Lbp-1		0
True	30	NTK Lbp-7		0	True	30	NTK Lbp-7		0
True	31	NTK F44G3.2.1		0	True	31	NTK F44G3.2.1		0
True	32	NTK Gst-38	32,01	0	True	32	NTK Gst-38	32,02	0

Tabulka č. 46:

Vypočtená data cP 1A. měření								
.	cDNA	Gen	cP	mean	factor	cal. cP	Lps cP	cP(N2)-cP(LPS)
1	LPS	Lys-1	20,260					
2	LPS	Lys-7	21,200					
3	LPS	Cri-1	28,480					
4	LPS	Cri-3	21,530					
5	LPS	Lbp-1	20,980					
6	LPS	Lbp-7	23,760					
7	LPS	F44632	27,250					
8	LPS	Gst-38	25,860					
9	LPS	Gst-38	25,780	25,820				
10	LPS	AMA-1 A	26,860					
11	LPS	AMA-1 B	27,070					
12	LPS	AMA-1 C	27,060	26,997	Faktor	cP(N2)	cP(LPS)	Výsledek cP(N2)-cP(LPS)
13	N2	Lys-1	19,730	x1,037	1,037	20,457	20,260	0,197
14	N3	Lys-7	20,890	x1,037	1,037	21,660	21,200	0,460
15	N4	Cri-1	27,680	x1,037	1,037	28,701	28,480	0,221
16	N5	Cri-3	21,030	x1,037	1,037	21,805	21,530	0,275
17	N6	Lbp-1	20,660	x1,037	1,037	21,422	20,980	0,442
18	N7	Lbp-7	23,420	x1,037	1,037	24,284	23,760	0,524
19	N8	F44G3.2.1	24,650	x1,037	1,037	25,559	27,250	-1,691
20	N9	Gst-38	25,620					
21	N10	Gst-38	25,590	25,605	1,037	26,549	25,820	0,729
22	N11	AMA-1 A	25,900					
23	N12	AMA-1 B	26,030					
24	N13	AMA-1 C	26,180	26,037	1,037	26,997	26,997	0,000
25	NTK	NTK						
26	NTK	NTK	[31.75]					
27	NTK	NTK						
28	NTK	NTK						
29	NTK	NTK	[4.22]					
30	NTK	NTK						
31	NTK	NTK						
32	NTK	NTK	32,01					

Výpočet faktoru	
AMA-1 LPS	26,997
AMA-1 N2	26,037
Faktor	1,037

Tabulka č. 47:

Naměřená data IB.měření										
530					640					
True	1	LPS Lys-1	20,53	0	True	1	LPS Lys-1	20,52	0	
True	2	LPS Lys-7	21,35	0	True	2	LPS Lys-7	21,32	0	
True	3	LPS Cri-1	28,58	0	True	3	LPS Cri-1	28,59	0	
True	4	LPS Cri-3	21,75	0	True	4	LPS Cri-3	21,74	0	
True	5	LPS Lbp-1	21,18	0	True	5	LPS Lbp-1	21,14	0	
True	6	LPS Lbp-7	23,72	0	True	6	LPS Lbp-7	23,69	0	
True	7	LPS Gst-38	26,08	0	True	7	LPS Gst-38	26,09	0	
True	8	LPS F44G3.2.1	27,42	0	True	8	LPS F44G3.2.1	27,43	0	
True	9	LPS F44G3.2.1	27,51	0	True	9	LPS F44G3.2.1	27,49	0	
True	10	LPS AMA-1 A		0	True	10	LPS AMA-1 A	23,68	0	
True	11	LPS AMA-1 B		0	True	11	LPS AMA-1 B	23,72	0	
True	12	LPS AMA-1 C		0	True	12	LPS AMA-1 C	23,59	0	
True	13	LPS Lys-1	19,77	0	True	13	LPS Lys-1	19,78	0	
True	14	LPS Lys-7	20,79	0	True	14	LPS Lys-7	20,83	0	
True	15	LPS Cri-1	27,53	0	True	15	LPS Cri-1	27,52	0	
True	16	LPS Cri-3	21,05	0	True	16	LPS Cri-3	21,04	0	
True	17	LPS Lbp-1	20,51	0	True	17	LPS Lbp-1	20,57	0	
True	18	LPS Lbp-7	23,46	0	True	18	LPS Lbp-7	23,45	0	
True	19	LPS Gst-38	25,6	0	True	19	LPS Gst-38	25,62	0	
True	20	LPS F44G3.2.1	24,46	0	True	20	LPS F44G3.2.1	24,46	0	
True	21	LPS F44G3.2.1	24,44	0	True	21	LPS F44G3.2.1	24,43	0	
True	22	N2 AMA-1 A		0	True	22	N2 AMA-1 A	22,48	0	
True	23	N2 AMA-1 B		0	True	23	N2 AMA-1 B	22,62	0	
True	24	N2 AMA-1C		0	True	24	N2 AMA-1C	23,35	0	
True	25	NTK Lys-1		0	True	25	NTK Lys-1		0	
True	26	NTK Lys-7		0	True	26	NTK Lys-7		0	
True	27	NTK Cri-1		0	True	27	NTK Cri-1		0	
True	28	NTK Cri-3		0	True	28	NTK Cri-3		0	
True	29	NTK Lbp-1	[35.39]	0	True	29	NTK Lbp-1		0	
True	30	NTK Lbp-7	39,4	0	True	30	NTK Lbp-7		0	
True	31	NTK F44G3.2.1	[15.09]	0	True	31	NTK F44G3.2.1		0	
True	32	NTK Gst-38	31,64	0	True	32	NTK Gst-38	31,73	0	

Tabulka č. 48:

Vypočtená data cP 1B.měření								
.	cDNA	Gen	cP	mean	factor	cal. cP	Lps cP	cP(N2)-cP(LPS)
1	LPS	Lys-1	20,530					
2	LPS	Lys-7	21,350					
3	LPS	Cri-1	28,580					
4	LPS	Cri-3	21,750					
5	LPS	Lbp-1	21,180					
6	LPS	Lbp-7	23,720					
7	LPS	Gst-38	26,080					
8	LPS	F44G3.2.1	27,420					
9	LPS	F44G3.2.1	27,510	27,465				
10	LPS	AMA-1 A	23,680					
11	LPS	AMA-1 B	23,720					Výsledek
12	LPS	AMA-1 C	23,590	23,663	Faktor	cP(N2)	cP(LPS)	cP(N2)-cP(LPS)
13	N2	Lys-1	19,770	x1,037	1,037	20,504	20,530	-0,026
14	N3	Lys-7	20,790	x1,037	1,037	21,561	21,350	0,211
15	N4	Cri-1	27,530	x1,037	1,037	28,552	28,580	-0,028
16	N5	Cri-3	21,050	x1,037	1,037	21,831	21,750	0,081
17	N6	Lbp-1	20,510	x1,037	1,037	21,271	21,180	0,091
18	N7	Lbp-7	23,460	x1,037	1,037	24,331	23,720	0,611
19	N8	Gst-38	25,600	x1,037	1,037	26,550	26,080	0,470
20	N9	F44G3.2.1	24,460					0,000
21	N10	F44G3.2.1	24,440	24,450	1,037	25,357	27,465	-2,108
22	N11	AMA-1 A	22,480					0,000
23	N12	AMA-1 B	22,620					0,000
24	N13	AMA-1 C	23,350	22,817	1,037	23,663	23,663	0,000
25	NTK	Lys-1						
26	NTK	Lys-7	[31.75]					
27	NTK	Cri-1						
28	NTK	Cri-3						
29	NTK	Lbp-1	[4.22]					
30	NTK	Lbp-7						
31	NTK	Gst-38						
32	NTK	F44G3.2.1	32,010					

Výpočet faktoru	
AMA-1 LPS	23,663
AMA-1 N2	22,817
Faktor	1,037

Tabulka č. 49:

Naměřená data 2A. měření									
530					640				
True	1	LPS Tol-1	21,72	0	True	1	LPS Tol-1	21,78	0
True	2	LPS Hsp-70	22,55	0	True	2	LPS Hsp-70	22,61	0
True	3	LPS Gst-5	23,34	0	True	3	LPS Gst-5	23,35	0
True	4	LPS Clc-1	21,53	0	True	4	LPS Clc-1	21,59	0
True	5	LPS F01G10.10 a	28,01	0	True	5	LPS F01G10.10 a	28	0
True	6	LPS F01610.10 b	28,1	0	True	6	LPS F01610.10 b	28,12	0
True	7	LPS Daf-12	24,56	0	True	7	LPS Daf-12	24,53	0
True	8	LPS Gst-38	25,49	0	True	8	LPS Gst-38	25,49	0
True	9	LPS F44G3.2.1	27,53	0	True	9	LPS F44G3.2.1	27,56	0
True	10	LPS AMA-1 A		0	True	10	LPS AMA-1 A	22,89	0
True	11	LPS AMA-1 B		0	True	11	LPS AMA-1 B	23,07	0
True	12	LPS AMA-1 C		0	True	12	LPS AMA-1 C	23,07	0
True	13	N2 Tol-1	21,65	0	True	13	N2 Tol-1	21,67	0
True	14	N2 Hsp-70	25,49	0	True	14	N2 Hsp-70	25,54	0
True	15	N2 Gst-5	22,44	0	True	15	N2 Gst-5	22,44	0
True	16	N2 Clc-1	22,4	0	True	16	N2 Clc-1	22,49	0
True	17	N2 F01G10.10 a	27,36	0	True	17	N2 F01G10.10 a	27,33	0
True	18	N2 F01610.10 b	27,46	0	True	18	N2 F01610.10 b	27,45	0
True	19	N2 Daf-12	24,47	0	True	19	N2 Daf-12	24,49	0
True	20	N2 Gst-38	26,08	0	True	20	N2 Gst-38	26,08	0
True	21	N2 F4463.2.1	24,96	0	True	21	N2 F4463.2.1	24,97	0
True	22	N2 AMA-1 A		0	True	22	N2 AMA-1 A	23,07	0
True	23	N2 AMA-1 B		0	True	23	N2 AMA-1 B	22,88	0
True	24	N2 AMA-1 C		0	True	24	N2 AMA-1 C	22,92	0
True	25	NTK Tol-1		0	True	25	NTK Tol-1		0
True	26	NTK Hsp-70	[37.31]	0	True	26	NTK Hsp-70		0
True	27	NTK Gst-5		0	True	27	NTK Gst-5		0
True	28	NTK Clc-1		0	True	28	NTK Clc-1		0
True	29	NTK F01G10.10		0	True	29	NTK F01G10.10		0
True	30	NTK Daf-12	38,38	0	True	30	NTK Daf-12	38,42	0
True	31	NTKGst-38	34,33	0	True	31	NTKGst-38	34,5	0
True	32	NTK F44G3.2.1		0	True	32	NTK F44G3.2.1	[>40.00]	0

Tabulka č. 50:

Vypočtená data cP 2A.měření								
	cDNA	Gen	cP	mean cP	factor	calc. cP	Lps cP	cP:N2-Lps
1	LPS	Tol-1	21,720					
2	LPS	Hsp-70	22,550					
3	LPS	Gst-5	23,340					
4	LPS	Clc-1	21,530					
5	LPS	F01610.10	28,010					
6	LPS	F01610.10	28,100	28,055				
7	LPS	Daf-12	24,560					
8	LPS	Gst-38	25,490					
9	LPS	F4463.2.1	27,530					
10	LPS	AMA-1 A	22,890					
11	LPS	AMA-1 B	23,070					
12	LPS	AMA-1 C	23,070	23,010	Faktor	cP(N2)	cP(LPS)	Výsledek cP(N2)-cP(LPS)
13	N2	Tol-1	21,650	x1,002	1,002	21,700	21,720	-0,020
14	N2	Hsp-70	25,490	x1,002	1,002	25,549	22,550	2,999
15	N2	Gst-5	22,440	x1,002	1,002	22,492	23,340	-0,848
16	N2	Clc-1	22,400	x1,002	1,002	22,452	21,530	0,922
17	N2	F01610.10	27,360	x1,002				
18	N2	F01610.10	27,460	27,410	1,002	27,474	28,055	-0,581
19	N2	Daf-12	24,470	x1,002	1,002	24,527	24,560	-0,033
20	N2	Gst-38	26,080	x1,002	1,002	26,141	25,490	0,651
21	N2	F4463.2.1	24,960	x1,002	1,002	25,018	27,530	-2,512
22	N2	AMA-1 A	23,070					
23	N2	AMA-1 B	22,880					
24	N2	AMA-1 C	22,920	22,957	1,002	23,010	23,010	0,000
25	NTK	Tol-1						
26	NTK	Hsp-70	[37.31]					
27	NTK	Gst-5						
28	NTK	Clc-1						
29	NTK	F01610.10						
30	NTK	Daf-12	38,380					
31	NTK	NTK F4463.2.1	34,330					
32	NTK	Gst-38						

Výpočet faktoru	
AMA-1 LPS	23,010
AMA-1 N2	22,957
Faktor	1,002

Tabulka č. 51:

Naměřená data 2B. měření									
530					640				
True	1	LPS Tol-1	22,75	0	True	1	LPS Tol-1	22,75	0
True	2	LPS Hsp-70	25,96	0	True	2	LPS Hsp-70	26,03	0
True	3	LPS Gst-5	25,6	0	True	3	LPS Gst-5	25,59	0
True	4	LPS Clc-1	23	0	True	4	LPS Clc-1	22,88	0
True	5	LPS F01G10.10	29,23	0	True	5	LPS F01G10.10 a	29,19	0
True	6	LPS Daf-12	25,54	0	True	6	LPS F01G10.10 b	25,59	0
True	7	LPS Gst-38	27,56	0	True	7	LPS Daf-12	27,57	0
True	9	LPS F44G3.2.1	29,49	0	True	9	LPS F44G3.2.1	29,49	0
True	10	LPS AMA-1 A		0	True	10	LPS AMA-1 A	24,87	0
True	11	LPS AMA-1 B		0	True	11	LPS AMA-1 B	24,76	0
True	13	N2 Tol-1	21,63	0	True	13	N2 Tol-1	21,63	0
True	14	N2 Hsp-70	25,92	0	True	14	N2 Hsp-70	25,99	0
True	15	N2 Gst-5	23,64	0	True	15	N2 Gst-5	23,62	0
True	16	N2 Clc-1	23,53	0	True	16	N2 Clc-1	23,52	0
True	17	N2 F01G10.10	28,34	0	True	17	N2 F01G10.10 a	28,35	0
True	19	N2 Daf-12	24,01	0	True	19	N2 Daf-12	24,08	0
True	20	N2 Gst-38	27,65	0	True	20	N2 Gst-38	27,67	0
True	21	N2 F44G3.2.1	26,03	0	True	21	N2 F44G3.2.1	26,04	0
True	22	N2 AMA-1 A		0	True	22	N2 AMA-1 A	23,93	0
True	23	N2 AMA-1 B		0	True	23	N2 AMA-1 B	23,86	0
True	25	NTK Tol-1		0	True	25	NTK Tol-1		0
True	26	NTK Hsp-70		0	True	26	NTK Hsp-70		0
True	27	NTK Gst-5		0	True	27	NTK Gst-5		0
True	28	NTK Clc-1		0	True	28	NTK Clc-1		0
True	29	NTK F01G10.10		0	True	29	NTK F01G10.10		0
True	30	NTK Daf-12		0	True	30	NTK Daf-12		0
True	31	NTKGst-38		0	True	31	NTKGst-38		0
True	32	NTK F44G3.2.1		0	True	32	NTK F44G3.2.1		0

Tabulka č. 52:

Vypočtená data cP 2B. měření								
	cDNA	Gen	cP	mean cP	factor	calc. cP	Lps cP	cP:N2-Lps
1	LPS	Tol-1	22,750					
2	LPS	Hsp-70	25,960					
3	LPS	Gst-5	25,600					
4	LPS	Clc-1	23,000					
5	LPS	F01610.10	29,230					
7	LPS	Daf-12	25,540					
8	LPS	Gst-38	27,560					
9	LPS	F4463.2.1	29,490					
10	LPS	AMA-1 A	24,870					Výsledek
11	LPS	AMA-1 B	24,760	24,815	Faktor	cP(N2)	cP(LPS)	
13	N2	Tol-1	21,630	x1,039	1,039	22,463	22,750	-0,287
14	N2	Hsp-70	25,920	x1,039	1,039	26,918	25,960	0,958
15	N2	Gst-5	23,640	x1,039	1,039	24,550	25,600	-1,050
16	N2	Clc-1	23,530	x1,039	1,039	24,436	23,000	1,436
17	N2	F01610.10	28,340	x1,039	1,039	29,431	29,230	0,201
19	N2	Daf-12	24,010	x1,039	1,039	24,934	25,540	-0,606
20	N2	Gst-38	27,650	x1,039	1,039	28,715	27,560	1,155
21	N2	F4463.2.1	26,030	x1,039	1,039	27,032	29,490	-2,458
22	N2	AMA-1 A	23,930					
23	N2	AMA-1 B	23,860	23,895	1,039	24,815	24,815	0,000
25	NTK	Tol-1						
26	NTK	Hsp-70	[37.31]					
27	NTK	Gst-5						
28	NTK	Clc-1						
29	NTK	F01610.10						
30	NTK	Daf-12	38,380					
31	NTK	NTK F4463.2.1	34,330					
32	NTK	Gst-38						

Výpočet faktoru	
AMA-1 LPS	24,815
AMA-1 N2	23,895
Faktor	1,039

Tabulka č. 53:

Naměřená data 3A. měření									
530					640				
True	1	LPS iLys-3	20,53	0	True	1	LPS iLys-3	20,52	0
True	2	LPS Lys-5	21,35	0	True	2	LPS Lys-5	21,32	0
True	3	LPS Clec-60	28,58	0	True	3	LPS Clec-60	28,59	0
True	4	LPS Clec-60	21,75	0	True	4	LPS Clec-60	21,74	0
True	5	LPS Clec-71	21,18	0	True	5	LPS Clec-71	21,14	0
True	6	LPS Abf-2	23,72	0	True	6	LPS Abf-2	23,69	0
True	7	LPS Gst-38	26,08	0	True	7	LPS Gst-38	26,09	0
True	8	LPS F44G3.2.1	27,42	0	True	8	LPS F44G3.2.1	27,43	0
True	9	LPS AMA-1A	27,51	0	True	9	LPS AMA-1A	27,49	0
True	10	LPS AMA-1 B	0	0	True	10	LPS AMA-1 B	23,68	0
True	11	LPS AMA-1 C	0	0	True	11	LPS AMA-1 C	23,72	0
True	12	LPS AMA-1 D	0	0	True	12	LPS AMA-1 D	23,59	0
True	13	N2 iLys-1	19,77	0	True	13	N2 iLys-1	19,78	0
True	14	N2 Lys-5	20,79	0	True	14	N2 Lys-5	20,83	0
True	15	N2 Clec-60	27,53	0	True	15	N2 Clec-60	27,52	0
True	16	N2 Clec-60	21,05	0	True	16	N2 Clec-60	21,04	0
True	17	N2 Clec-71	20,51	0	True	17	N2 Clec-71	20,57	0
True	18	N2Abf-2	23,46	0	True	18	N2Abf-2	23,45	0
True	19	N2 Gst-38	25,6	0	True	19	N2 Gst-38	25,62	0
True	20	N2 F44G3.2.1	24,46	0	True	20	N2 F44G3.2.1	24,46	0
True	21	N2 AMA-1A	24,44	0	True	21	N2 AMA-1A	24,43	0
True	22	N2 AMA-1 B	0	0	True	22	N2 AMA-1 B	22,48	0
True	23	N2 AMA-1 C	0	0	True	23	N2 AMA-1 C	22,62	0
True	24	N2AMA-1 D	0	0	True	24	N2AMA-1 D	23,35	0
True	25	NTK iLys-3		0	True	25	NTK iLys-3		0
True	26	NTK Lys-5		0	True	26	NTK Lys-5		0
True	27	NTK Clec-60		0	True	27	NTK Clec-60		0
True	28	NTK Clec-60		0	True	28	NTK Clec-60		0
True	29	NTK Abf-2	[35.39]	0	True	29	NTK Abf-2		0
True	30	NTK Gst-38	39,4	0	True	30	NTK Gst-38		0
True	31	NTK F44G3.2.1	[15.09]	0	True	31	NTK F44G3.2.1		0
True	32	NTK AMA-1	31,64	0	True	32	NTK AMA-1	31,73	0

Tabulka č. 54:

Vypočtená data cP 3A.měření								
.	cDNA	Gen	cP	mean	factor	cal. cP	Lps cP	cP(N2)-cP(LPS)
1	LPS	iLys-3	30,810					
2	LPS	Lys-5	27,500					
3	LPS	Clec-60	29,790					
4	LPS	Clec-60	31,370					
5	LPS	Clec-71	28,190					
6	LPS	Abf-2	27,950					
7	LPS	Gst-38	26,330					
8	LPS	F44G3.2.1	27,860					
9	LPS	AMA-1 A	23,360					
10	LPS	AMA-1 B	23,620					
11	LPS	AMA-1 C	23,700					Výsledek
12	LPS	AMA-1 D	23,690	23,593	Faktor	cP(N2)	cP(LPS)	cP(N2)-cP(LPS)
13	N2	iLys-3	29,860	x1,016	1,016	30,346	30,810	-0,464
14	N3	Lys-5	29,160	x1,016	1,016	29,634	27,500	2,134
15	N4	Clec-60	30,910	x1,016	1,016	31,413	29,790	1,623
16	N5	Clec-60	32,380	x1,016	1,016	32,907	31,370	1,537
17	N6	Clec-71	33,060	x1,016	1,016	33,598	28,190	5,408
18	N7	Abf-2	27,450	x1,016	1,016	27,896	27,950	-0,054
19	N8	Gst-38	26,510	x1,016	1,016	26,941	26,330	0,611
20	N9	F44G3.2.1	25,470			25,884	27,860	-1,976
21	N10	AMA-1 A	23,110	24,290				
22	N11	AMA-1 B	23,160					
23	N12	AMA-1 C	23,350					
24	N13	AMA-1 D	23,240	23,215	1,016	23,593	23,593	0,000
25	NTK	iLys-3						
26	NTK	Lys-5	[31.75]					
27	NTK	Clec-60						
28	NTK	Clec-60						
29	NTK	Clec-71	[4.22]					
30	NTK	Abf-2						
31	NTK	Gst-38						
32	NTK	F44G3.2.1	32,010					

Výpočet faktoru	
AMA-1 LPS	23,593
AMA-1 N2	23,215
Faktor	1,016

Tabulka č. 55:

Naměřená data 3B. měření									
530					640				
True	1	LPS iLys-3	20,53	0	True	1	LPS iLys-3	20,52	0
True	2	LPS Lys-5	21,35	0	True	2	LPS Lys-5	21,32	0
True	3	LPS Clec-60	28,58	0	True	3	LPS Clec-60	28,59	0
True	4	LPS Clec-60	21,75	0	True	4	LPS Clec-60	21,74	0
True	5	LPS Clec-71	21,18	0	True	5	LPS Clec-71	21,14	0
True	6	LPS Abf-2	23,72	0	True	6	LPS Abf-2	23,69	0
True	7	LPS Gst-38	26,08	0	True	7	LPS Gst-38	26,09	0
True	8	LPS F44G3.2.1	27,42	0	True	8	LPS F44G3.2.1	27,43	0
True	9	LPS F44G3.2.1	27,51	0	True	9	LPS F44G3.2.1	27,49	0
True	10	LPS F44G3.2.1	0	0	True	10	LPS F44G3.2.1	23,68	0
True	11	LPS AMA-1 C	0	0	True	11	LPS AMA-1 C	23,72	0
True	12	LPS AMA-1 D	0	0	True	12	LPS AMA-1 D	23,59	0
True	13	N2 iLys-1	19,77	0	True	13	N2 iLys-1	19,78	0
True	14	N2 Lys-5	20,79	0	True	14	N2 Lys-5	20,83	0
True	15	N2 Clec-60	27,53	0	True	15	N2 Clec-60	27,52	0
True	16	N2 Clec-60	21,05	0	True	16	N2 Clec-60	21,04	0
True	17	N2 Clec-71	20,51	0	True	17	N2 Clec-71	20,57	0
True	18	N2Abf-2	23,46	0	True	18	N2Abf-2	23,45	0
True	19	N2 Gst-38	25,6	0	True	19	N2 Gst-38	25,62	0
True	20	N2 F44G3.2.1	24,46	0	True	20	N2 F44G3.2.1	24,46	0
True	21	N2 F44G3.2.1	24,44	0	True	21	N2 F44G3.2.1	24,43	0
True	22	N2 F44G3.2.1	0	0	True	22	N2 F44G3.2.1	22,48	0
True	23	N2 AMA-1 C	0	0	True	23	N2 AMA-1 C	22,62	0
True	24	N2AMA-1 D	0	0	True	24	N2AMA-1 D	23,35	0
True	25	NtK iLys-3		0	True	25	NtK iLys-3		0
True	26	NtK Lys-5		0	True	26	NtK Lys-5		0
True	27	NtK CLEC-60		0	True	27	NtK CLEC-60		0
True	28	NtK CLEC-60		0	True	28	NtK CLEC-60		0
True	29	NtK CLEC-71	[35.39]	0	True	29	NtK CLEC-71		0
True	30	NtK Abf-2	39,4	0	True	30	NtK Abf-2		0
True	31	NtK AMA-1	[15.09]	0	True	31	NtK AMA-1		0
True	32	NtK F44G32	31,64	0	True	32	NtK F44G32	31,73	0

Tabulka č. 56:

Vypočtená data cP 3B.měření								
.	cDNA	Gen	cP	mean	factor	cal. cP	Lps cP	cP(N2)-cP(LPS)
1	LPS	iLys-3	31,710					
2	LPS	Lys-5	29,680					
3	LPS	Clec-60	31,790					
4	LPS	Clec-60	32,770					
5	LPS	Clec-71	30,250					
6	LPS	Abf-2	28,740					
7	LPS	Gst-38	28,360					
8	LPS	F44G3.2.1	29,800					
9	LPS	F44G3.2.1	29,920					
10	LPS	F44G3.2.1	29,950	29,890				
11	LPS	AMA-1 A	26,540					Výsledek
12	LPS	AMA-1 C	26,590	26,565	Faktor	cP(N2)	cP(LPS)	cP(N2)-cP(LPS)
13	N2	iLys-3	30,780		1,146	35,260	31,710	3,550
14	N2	Lys-5	30,510		1,146	34,950	29,680	5,270
15	N2	Clec-60	31,260		1,146	35,809	31,790	4,019
16	N2	Clec-60	32,570		1,146	37,310	32,770	4,540
17	N2	Clec-71	34,010		1,146	38,960	30,250	8,710
18	N2	Abf-2	26,860		1,146	30,769	28,740	2,029
19	N2	Gst-38	27,030		1,146	30,964	28,360	2,604
20	N2	F44G3.2.1	25,700					
21	N2	F44G3.2.1	25,730					
22	N2	F44G3.2.1	25,670	25,700	1,146	29,440	29,890	-0,450
23	N2	AMA-1 A	23,220					
24	N2	AMA-1 C	23,160	23,190	1,146	26,565	26,565	0,000
25	NTK	iLys-3						
26	NTK	Lys-5						
27	NTK	Clec-60						
28	NTK	Clec-60						
29	NTK	Clec-71						
30	NTK	Abf-2						
31	NTK	F44G3.2.1						
32	NTK	AMA-1						

Výpočet faktoru	
AMA-1 LPS	26,565
AMA-1 N2	23,19
Faktor	1,145537

Tabulka č. 57:

Naměřená data 3C. měření									
530					640				
True	1	LPS iLys-3	27,8	0	True	1	LPS iLys-3	27,79	0
True	2	LPS Lys-5	27,68	0	True	2	LPS Lys-5	27,45	0
True	3	LPS Clec-60	27,94	0	True	3	LPS Clec-60	27,95	0
True	4	LPS Clec-60	28,92	0	True	4	LPS Clec-60	28,99	0
True	5	LPS Clec-71	27,65	0	True	5	LPS Clec-71	27,6	0
True	6	LPS Abf-2	26,54	0	True	6	LPS Abf-2	26,55	0
True	7	LPS Gst-38	27,67	0	True	7	LPS Gst-38	27,67	0
True	8	LPS F44G3.2.1	30,51	0	True	8	LPS F44G3.2.1	30,49	0
True	9	LPS F44G3.2.1	30,6	0	True	9	LPS F44G3.2.1	30,59	0
True	10	LPS AMA-1 A		0	True	10	LPS AMA-1 A	24,48	0
True	11	LPS AMA-1 B		0	True	11	LPS AMA-1 B	24,67	0
True	12	LPS AMA-1 C		0	True	12	LPS AMA-1 C	24,77	0
True	13	N2 iLys-1	25,71	0	True	13	N2 iLys-1	25,71	0
True	14	N2 Lys-5	27,48	0	True	14	N2 Lys-5	27,43	0
True	15	N2 Clec-60	28,07	0	True	15	N2 Clec-60	28,07	0
True	16	N2 Clec-60	29,55	0	True	16	N2 Clec-60	29,55	0
True	17	N2 Clec-71	31,84	0	True	17	N2 Clec-71	31,91	0
True	18	N2Abf-2	25,18	0	True	18	N2Abf-2	25,15	0
True	19	N2 Gst-38	25,72	0	True	19	N2 Gst-38	25,71	0
True	20	N2 F44G3.2.1	25,98	0	True	20	N2 F44G3.2.1	25,96	0
True	21	N2 F44G3.2.1	26,01	0	True	21	N2 F44G3.2.1	26,01	0
True	22	N2 AMA-1 A		0	True	22	N2 AMA-1 A	23,48	0
True	23	N2 AMA-1 B		0	True	23	N2 AMA-1 B	23,45	0
True	24	N2AMA-1 C		0	True	24	N2AMA-1 C	23,58	0
True	25	NtK iLys-3		0	True	25	NtK iLys-3		0
True	26	NtK Lys-5		0	True	26	NtK Lys-5		0
True	27	NtK CLEC-60		0	True	27	NtK CLEC-60		0
True	28	NtK CLEC-60		0	True	28	NtK CLEC-60		0
True	29	NtK CLEC-71		0	True	29	NtK CLEC-71		0
True	30	NtK Abf-2		0	True	30	NtK Abf-2		0
True	31	NtK AMA-1		0	True	31	NtK AMA-1		0
True	32	NtK F44G32		0	True	32	NtK F44G32		0

Tabulka č. 58:

Vypočtená data cP 3C. měření								
.	cDNA	Gen	cP	mean	factor	cal. cP	Lps cP	cP(N2)-cP(LPS)
1	LPS	iLys-3	27,800					
2	LPS	Lys-5	27,680					
3	LPS	Clec-60	27,940					
4	LPS	Clec-60	28,920					
5	LPS	Clec-71	27,650					
6	LPS	Abf-2	26,540					
7	LPS	Gst-38	27,670					
8	LPS	F44G3.2.1	30,510					
9	LPS	F44G3.2.1	30,600	30,555				
10	LPS	AMA-1A	24,480	x				
11	LPS	AMA-1 B	24,670					Výsledek
12	LPS	AMA-1 C	24,770	24,640	Faktor	cP(N2)	cP(LPS)	cP(N2)-cP(LPS)
13	N2	iLys-3	25,710	x1,048	1,048	26,953	27,800	-0,847
14	N2	Lys-5	27,480	x1,048	1,048	28,809	27,680	1,129
15	N2	Clec-60	28,070	x1,048	1,048	29,428	27,940	1,488
16	N2	Clec-60	29,550	x1,048	1,048	30,979	28,920	2,059
17	N2	Clec-71	31,840	x1,048	1,048	33,380	27,650	5,730
18	N2	Abf-2	25,180	x1,048	1,048	26,398	26,540	-0,142
19	N2	Gst-38	25,720	x1,048	1,048	26,964	27,670	-0,706
20	N2	F44G3.2.1	25,980					
21	N2	F44G3.2.1	26,010	25,995	1,048	27,252	30,555	-3,303
22	N2	AMA-1	23,480	x				
23	N2	AMA-1 A	23,450					
24	N2	AMA-1 C	23,580	23,503	1,048	24,640	24,640	0,000
25	NTK	iLys-3						
26	NTK	Lys-5						
27	NTK	Clec-60						
28	NTK	Clec-60						
29	NTK	Clec-71						
30	NTK	Abf-2						
31	NTK	F44G3.2.1						
32	NTK	AMA-1						

Výpočet faktoru	
AMA-1 LPS	24,640
AMA-1 N2	23,503
Faktor	1,048

Tabulka č. 59:

Naměřená data 3D. měření									
530					640				
True	1	LPS iLys-3	28,68	0	True	1	LPS iLys-3	28,68	0
True	2	LPS Lys-5	28,61	0	True	2	LPS Lys-5	28,89	0
True	3	LPS Clec-60	28,62	0	True	3	LPS Clec-60	28,65	0
True	4	LPS Clec-60	29,67	0	True	4	LPS Clec-60	29,74	0
True	5	LPS Clec-71	28,29	0	True	5	LPS Clec-71	28,3	0
True	6	LPS Abf-2	27,25	0	True	6	LPS Abf-2	27,21	0
True	7	LPS Gst-38	28,26	0	True	7	LPS Gst-38	28,29	0
True	8	LPS F44G3.2.1	30,74	0	True	8	LPS F44G3.2.1	30,75	0
True	9	LPS F44G3.2.1	31,27	0	True	9	LPS F44G3.2.1	31,28	0
True	10	LPS AMA-1 A		0	True	10	LPS AMA-1 A	25,8	0
True	11	LPS AMA-1 B		0	True	11	LPS AMA-1 B	25,42	0
True	12	LPS AMA-1 C		0	True	12	LPS AMA-1 C	25,65	0
True	13	N2 iLys-1	26,09	0	True	13	N2 iLys-1	26,06	0
True	14	N2 Lys-5	28,84	0	True	14	N2 Lys-5	28,66	0
True	15	N2 Clec-60	28,6	0	True	15	N2 Clec-60	28,61	0
True	16	N2 Clec-60	29,94	0	True	16	N2 Clec-60	29,96	0
True	17	N2 Clec-71	32,38	0	True	17	N2 Clec-71	32,37	0
True	18	N2Abf-2	24,33	0	True	18	N2Abf-2	24,35	0
True	19	N2 Gst-38	26,49	0	True	19	N2 Gst-38	26,48	0
True	20	N2 F44G3.2.1	26,29	0	True	20	N2 F44G3.2.1	26,28	0
True	21	N2 F44G3.2.1	26,47	0	True	21	N2 F44G3.2.1	26,45	0
True	22	N2 AMA-1 A		0	True	22	N2 AMA-1 A	23,21	0
True	23	N2 AMA-1 B		0	True	23	N2 AMA-1 B	23,24	0
True	24	N2AMA-1 C		0	True	24	N2AMA-1 C	23,84	0
True	25	NtK iLys-3		0	True	25	NtK iLys-3		0
True	26	NtK Lys-5		0	True	26	NtK Lys-5		0
True	27	NtK CLEC-60		0	True	27	NtK CLEC-60		0
True	28	NtK CLEC-60		0	True	28	NtK CLEC-60		0
True	29	NtK CLEC-71		0	True	29	NtK CLEC-71		0
True	30	NtK Abf-2		0	True	30	NtK Abf-2		0
True	31	NtK AMA-1		0	True	31	NtK AMA-1		0
True	32	NtK F44G32		0	True	32	NtK F44G32		0

Tabulka č. 60:

Vypočtená data cP 3D. měření								
.	cDNA	Gen	cP	mean	factor	cal. cP	Lps cP	cP(N2)-cP(LPS)
1	LPS	iLys-3	28,680					
2	LPS	Lys-5	28,610					
3	LPS	Clec-60	28,620					
4	LPS	Clec-60	29,670					
5	LPS	Clec-71	28,290					
6	LPS	Abf-2	27,250					
7	LPS	Gst-38	28,260					
8	LPS	F44G3.2.1	30,740					
9	LPS	F44G3.2.1	31,270	31,005				
10	LPS	AMA-1A	25,800					
11	LPS	AMA-1 B	25,420					Výsledek
12	LPS	AMA-1 C	25,650	25,623	Faktor	cP(N2)	cP(LPS)	cP(N2)-cP(LPS)
13	N2	iLys-3	26,090	x1,094	1,094	28,532	28,680	-0,148
14	N2	Lys-5	28,840	x1,094	1,094	31,540	28,610	2,930
15	N2	Clec-60	28,600	x1,094	1,094	31,277	28,620	2,657
16	N2	Clec-60	29,940	x1,094	1,094	32,743	29,670	3,073
17	N2	Clec-71	32,380	x1,094	1,094	35,411	28,290	7,121
18	N2	Abf-2	24,330	x1,094	1,094	26,608	27,250	-0,642
19	N2	Gst-38	26,490	x1,094	1,094	28,970	28,260	0,710
20	N2	F44G3.2.1	26,290					
21	N2	F44G3.2.1	26,470	26,380	1,094	28,849	31,005	-2,156
22	N2	AMA-1	23,210					
23	N2	AMA-1 A	23,240					
24	N2	AMA-1 C	23,840	23,430	1,094	25,623	25,623	0,000
25	NTK	iLys-3						
26	NTK	Lys-5						
27	NTK	Clec-60						
28	NTK	Clec-60						
29	NTK	Clec-71						
30	NTK	Abf-2						
31	NTK	F44G3.2.1						
32	NTK	AMA-1						

Výpočet faktoru	
AMA-1 LPS	25,623
AMA-1 N2	23,430
Faktor	1,094

Tabulka č. 61:

Expresce genů po podání LPS komponent

Naměřená data 1. měření										
530					640					
N2 kontrola					N2					
True	1	Clec-71	32,67	0	True	1	N2 Clec-71	32,65	0	
True	2	Clec-60	27,09	0	True	2	Clec-60	27,05	0	
True	3	Lys-5	29,88	0	True	3	Lys-5	30,5	0	
True	4	F44632	22,11	0	True	4	F44632	22,15	0	
True	5	AMA-1		0	True	5	AMA-1	21,96	0	
True	6	AMA-1		0	True	6	AMA-1	21,97	0	
Glukosa					Glukosa					
True	7	Clec-71	31,74	0	True	7	Glukosa Clec-71	31,85	0	
True	8	Clec-60	26,05	0	True	8	Clec-60	26,09	0	
True	9	Lys-5	28,5	0	True	9	Lys-5	[28,59]	0	
True	10	F44632	22,17	0	True	10	F44632	22,2	0	
True	11	AMA-1		0	True	11	AMA-1	21,12	0	
N-acetylglukosamin					N-acetylglukosamin					
True	12	Clec-71	31,17	0	True	12	N-acetylglukosa Clec-71	31,29	0	
True	13	Clec-60	24,92	0	True	13	Clec-60	24,98	0	
True	14	Lys-5	29,32	0	True	14	Lys-5	[29,06]	0	
True	15	F44632	23,73	0	True	15	F44632	23,71	0	
True	16	AMA-1		0	True	16	AMA-1	21,76	0	
Galaktosa					Galaktosa					
True	17	Clec-71	32,54	0	True	17	Galaktosa Clec-71	32,58	0	
True	18	Clec-60	25,91	0	True	18	Clec-60	25,89	0	
True	19	Lys-5	29,65	0	True	19	Lys-5	30,04	0	
True	20	F44632	23,99	0	True	20	F44632	24,02	0	
True	21	AMA-1		0	True	21	AMA-1	22,05	0	
N-acetylglukosamin					N-acetylglukosamin					
True	22	Clec-71	31,39	0	True	22	N-acetylglaktosa Clec-71	31,32	0	
True	23	Clec-60	25,54	0	True	23	Clec-60	25,6	0	
True	24	Lys-5	30,14	0	True	24	Lys-5	30,32	0	
True	25	F44632	25,89	0	True	25	F44632	25,87	0	
True	26	AMA-1		0	True	26	AMA-1	22,43	0	
Lipid A					Lipid A					
True	27	Clec-71	31,85	0	True	27	Lipid A Clec-71	31,89	0	
True	28	Clec-60	25,29	0	True	28	Clec-60	25,3	0	
True	29	Lys-5	29,88	0	True	29	Lys-5	[29,63]	0	
True	30	F44632	25	0	True	30	F44632	24,99	0	
True	31	AMA-1		0	True	31	AMA-1	22,99	0	
True	32	NTK AMA-1		0	True	32	NTK AMA-1		0	

Tabulka č. 62:

Vypočtená data cP 1.měření								
cap.	cDNA	GEN	cP	AMA-1,N2	faktor	calc. cP	N2 cP	delta cP
1	N2control	Clec-71	32,670					
2		Clec-60	27,090					
3		Lys-5	29,880					
4		F44632	22,110					
5		AMA-1	21,960					Výsledek
6		AMA-1	21,970	21,965	Faktor	cP(gen)	cP(N2)	cP(N2)-cP(gen)
7	Glukosa	Clec-71	31,740		1,040	33,010	32,670	-0,340
8		Clec-60	26,050		1,040	27,092	27,090	-0,002
9		Lys-5	28,500		1,040	29,640	29,880	0,240
10		F44632	22,170		1,040	23,057	22,110	-0,947
11		AMA-1	21,120	21,965	1,040	21,965	21,965	0,000
12	N-acetylglukosamin	Clec-71	31,170		1,009	31,464	32,670	1,206
13		Clec-60	24,920		1,009	25,155	27,090	1,935
14		Lys-5	29,320		1,009	29,596	29,880	0,284
15		F44632	23,730		1,009	23,954	22,110	-1,844
16		AMA-1	21,760	21,965	1,009	21,965	21,965	0,000
17	Galactosa	Clec-71	32,540		0,996	32,415	32,670	0,255
18		Clec-60	25,910		0,996	25,810	27,090	1,280
19		Lys-5	29,650		0,996	29,536	29,880	0,344
20		F44632	23,990		0,996	23,898	22,110	-1,788
21		AMA-1	22,050	21,965	0,996	21,965	21,965	0,000
22	N-acetylgalaktoamin	Clec-71	31,390		0,979	30,739	32,670	1,931
23		Clec-60	25,540		0,979	25,011	27,090	2,079
24		Lys-5	30,140		0,979	29,515	29,880	0,365
25		F44632	25,890		0,979	25,353	22,110	-3,243
26		AMA-1	22,430	21,965	0,979	21,965	21,965	0,000
27	Lipid A	Clec-71	31,850		0,955	30,430	32,670	2,240
28		Clec-60	25,290		0,955	24,162	27,090	2,928
29		Lys-5	29,880		0,955	28,548	29,880	1,332
30		F44632	25,000		0,955	23,885	22,110	-1,775
31		AMA-1	22,990	21,965	0,955	21,965	21,965	0,000
32	NTK	AMA-1						

Tabulka č. 63:

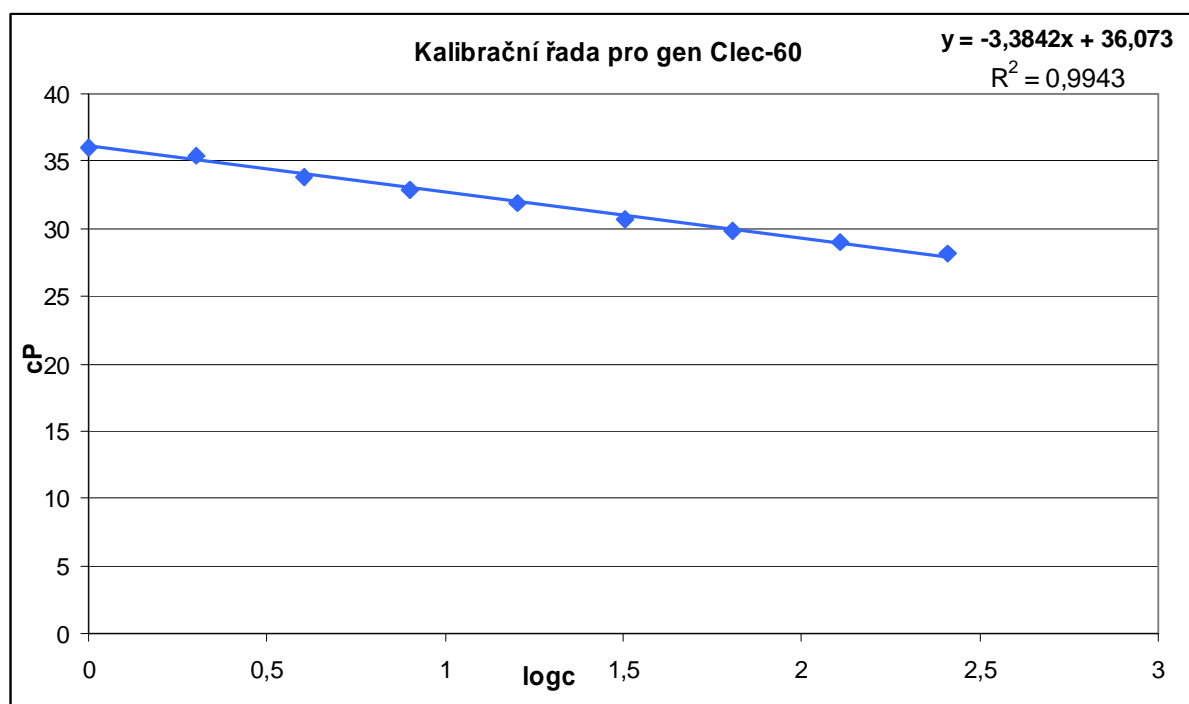
Naměřená data 2. měření									
530					640				
N2 kontrola					N2				
True	1	Clec-71	31,96	0	True	1	N2 Clec-71	31,85	0
True	2	Clec-60	26,61	0	True	2	Clec-60	26,6	0
True	3	Lys-5	29,56	0	True	3	Lys-5	29,44	0
True	4	F44632	20,84	0	True	4	F44632	20,85	0
True	5	AMA-1		0	True	5	AMA-1	21,66	0
True	6	AMA-1		0	True	6	AMA-1	21,63	0
Glukosa					Glukosa				
True	7	Clec-71	31,84	0	True	7	Glukosa	32,31	0
True	8	Clec-60	26,05	0	True	8	Clec-60	26,04	0
True	9	Lys-5	28,49	0	True	9	Lys-5	28,91	0
True	10	F44632	22,58	0	True	10	F44632	22,58	0
True	11	AMA-1		0	True	11	AMA-1	21,26	0
N-acetylglukosamin					N-acetylglukosamin				
True	12	Clec-71	30,93	0	True	12	N-acetylglukosa Clec-71	30,97	0
True	13	Clec-60	24,8	0	True	13	Clec-60	24,83	0
True	14	Lys-5	29,1	0	True	14	Lys-5	29,49	0
True	15	F44632	23,47	0	True	15	F44632	23,51	0
True	16	AMA-1		0	True	16	AMA-1	21,65	0
Galaktosa					Galaktosa				
True	17	Clec-71	31,87	0	True	17	Galaktosa Clec-71	31,84	0
True	18	Clec-60	25,29	0	True	18	Clec-60	25,28	0
True	19	Lys-5	28,93	0	True	19	Lys-5	28,7	0
True	20	F44632	23,27	0	True	20	F44632	23,3	0
True	21	AMA-1		0	True	21	AMA-1	21,65	0
N-acetylglukosamin					N-acetylglukosamin				
True	22	Clec-71	30,75	0	True	22	N-acetylgalaktosa Clec-71	30,72	0
True	23	Clec-60	24,64	0	True	23	Clec-60	24,62	0
True	24	Lys-5	29,1	0	True	24	Lys-5	[29.61]	0
True	25	F44632	24,5	0	True	25	F44632	24,49	0
True	26	AMA-1		0	True	26	AMA-1	21,67	0
Lipid A					Lipid A				
True	27	Clec-71	31,25	0	True	27	Lipid A Clec-71	31,38	0
True	28	Clec-60	24,92	0	True	28	Clec-60	24,9	0
True	29	Lys-5	29,71	0	True	29	Lys-5	29,37	0
True	30	F44632	24,46	0	True	30	F44632	24,45	0
True	31	AMA-1		0	True	31	AMA-1	22,84	0
True	32	NTK AMA-1		0	True	32	NTK AMA-1		0

Tabulka č. 64:

Vypočtená data cP 2.měření								
cap.	cDNA	GEN	cP	AMA-1	faktor	calc. cP	N2 cP	delta cP
1	N2control	Clec-71	31,960					N2-cal.
2		Clec-60	26,610					
3		Lys-5	29,560					
4		F44632	20,840					
5		AMA-1	21,660					Výsledek
6		AMA-1	21,630	21,645	Faktor	cP(gen)	cP(N2)	cP(N2)-cP(gen)
7	Glukosa	Clec-71	31,840		1,018	32,417	31,960	-0,457
8		Clec-60	26,050		1,018	26,522	26,610	0,088
9		Lys-5	28,490		1,018	29,006	29,560	0,554
10		F44632	22,580		1,018	22,989	20,840	-2,149
11		AMA-1	21,260	21,645	1,018	21,645	21,645	0,000
12	N-acetylglukosamin	Clec-71	30,930		1,000	30,923	31,960	1,037
13		Clec-60	24,800		1,000	24,794	26,610	1,816
14		Lys-5	29,100		1,000	29,093	29,560	0,467
15		F44632	23,470		1,000	23,465	20,840	-2,625
16		AMA-1	21,650	21,645	1,000	21,645	21,645	0,000
17	Galactosa	Clec-71	31,870		1,000	31,863	31,960	0,097
18		Clec-60	25,290		1,000	25,284	26,610	1,326
19		Lys-5	28,930		1,000	28,923	29,560	0,637
20		F44632	23,270		1,000	23,265	20,840	-2,425
21		AMA-1	21,650	21,645	1,000	21,645	21,645	0,000
22	N-acetylgalaktosamin	Clec-71	30,750		0,999	30,715	31,960	1,245
23		Clec-60	24,640		0,999	24,612	26,610	1,998
24		Lys-5	29,100		0,999	29,066	29,560	0,494
25		F44632	24,500		0,999	24,472	20,840	-3,632
26		AMA-1	21,670	21,645	0,999	21,645	21,645	0,000
27	Lipid A	Clec-71	31,250		0,948	29,615	31,960	2,345
28		Clec-60	24,920		0,948	23,616	26,610	2,994
29		Lys-5	29,710		0,948	28,156	29,560	1,404
30		F44632	24,460		0,948	23,180	20,840	-2,340
31		AMA-1	22,840	21,645	0,948	21,645	21,645	0,000
32	NTK	AMA-1						

Tabulka č. 65:

Meření efektivity primerů pro vybrané geny při RT-PCR



Graf č. 25:

Měření cP pro kalibrační řadu gen Clec-60			
	teoret. Koncentrace	cP	Průměr cP
True	1	36,61	36,065
True		35,52	
True	2	35,05	35,465
True		35,88	
True	4	34,03	33,895
True		33,76	
True	8	33,04	32,905
True		32,77	
True	16	31,8	31,845
True		31,89	
True	32	30,77	30,735
True		30,7	
True	64	29,84	29,865
True		29,89	
True	128	29	29,06
True		29,12	
True	256	28,09	28,145
True		28,2	

Tabulka č. 66:

cP – počet cyklů

E- efektivita PCR

		osa X	osa Y
μl cDNA ve vzorku	teoretická koncentrace c	log c	cP
0,015625	1	0	36,065
0,03125	2	0,30103	35,465
0,0625	4	0,60206	33,895
0,125	8	0,90309	32,905
0,25	16	1,20412	31,845
0,5	32	1,50515	30,735
1,0	64	1,80618	29,865
2,0	128	2,10721	29,06
4,0	256	2,40824	28,145

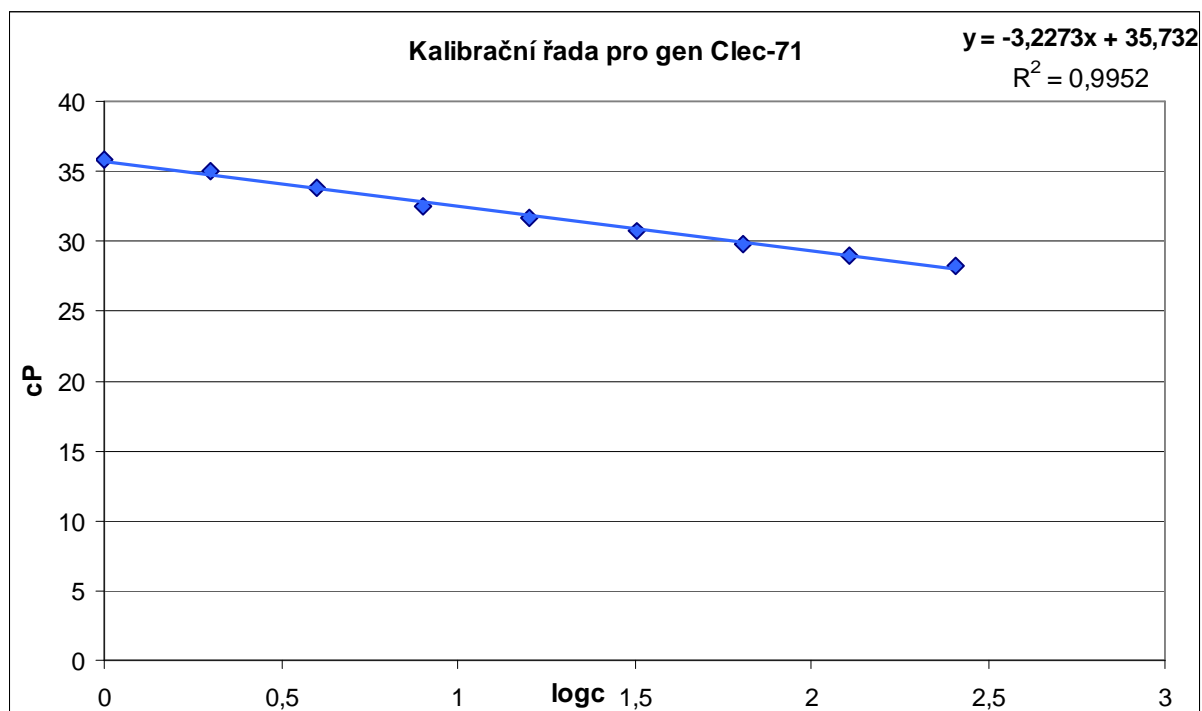
Tabulka č. 67:

$$y = k * x + q \rightarrow k = -3,3842$$

$$E = 10^{(-1/k)}$$

$$E = 10^{(-1/-3,3842)}$$

$$E = 2,0564$$



Graf č. 26:

Měření cP pro kalibrační řadu gen Clec-71			
	teoret. Koncentrace	cP	Průměr cP
True	1	35,58	
True		36,03	35,805
True	2	35,19	
True		34,82	35,005
True	4	34,11	
True		33,59	33,85
True	8	32,77	
True		32,32	32,545
True	16	31,71	
True		31,62	31,665
True	32	30,65	
True		30,78	30,715
True	64	29,83	
True		29,81	29,82
True	148	28,98	
True		29,03	29,005
True	256	28,16	
True		28,25	28,205

Tabulka č. 68:

		osa X	osa Y
μl cDNA ve vzorku	teoretická koncentrace c	log c	cP
0,015625	1	0	35,805
0,03125	2	0,30103	35,005
0,0625	4	0,60206	33,85
0,125	8	0,90309	32,545
0,25	16	1,20412	31,665
0,5	32	1,50515	30,715
1,0	64	1,80618	29,82
2,0	128	2,10721	29,005
4,0	256	2,40824	28,205

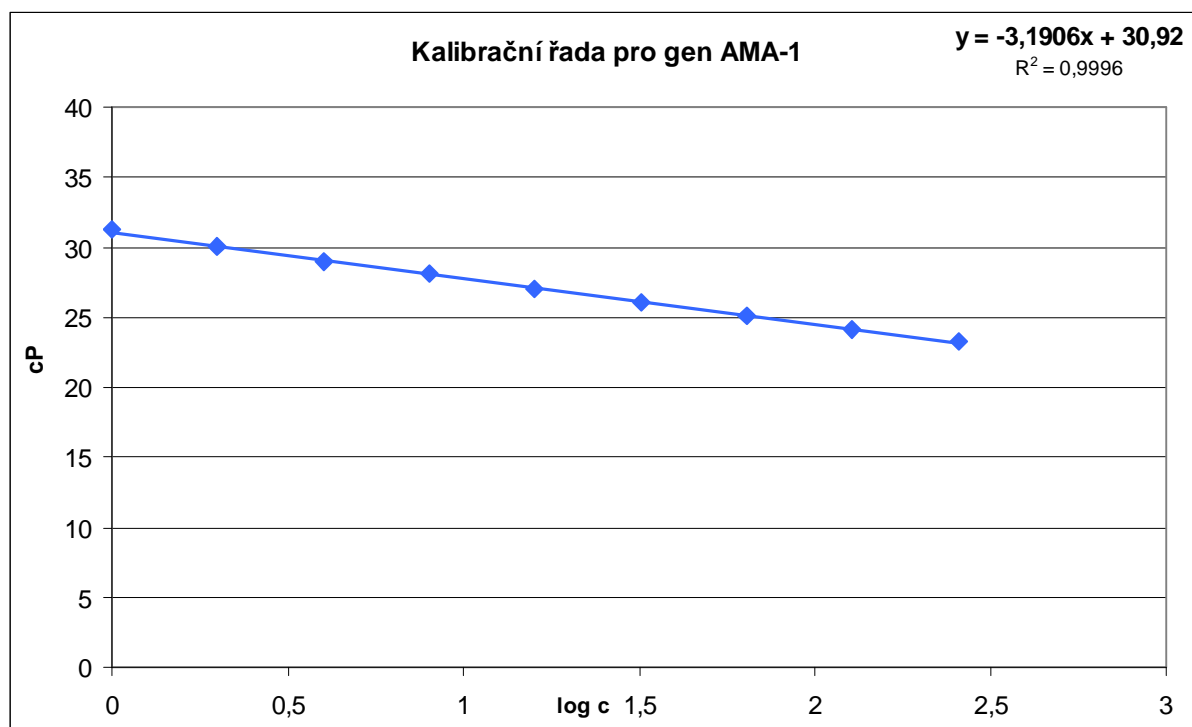
Tabulka č. 69:

$$y = k * x + q \rightarrow k = -3,2273$$

$$E = 10^{(-1/k)}$$

$$E = 10^{(-1/-3,2273)}$$

$$E = 2,041$$



Graf č. 27:

Měření cP pro kalibrační řadu gen AMA-1			
	teoret. Koncentrace	cP	Průměr cP
True	1	31,24	31,25
True		31,26	
True	2	30,01	30,005
True		30	
True	4	28,94	28,94
True		28,94	
True	8	28,02	28,1
True		28,18	
True	16	27,01	27,05
True		27,09	
True	32	26,09	26,09
True		26,09	
True	64	25,1	25,13
True		25,16	
True	148	24,19	24,165
True		24,14	
True	256	23,26	23,3
True		23,34	

Tabulka č. 70:

		osa X	osa Y
μl cDNA ve vzorku	teoretická koncentrace c	log c	cP
0,015625	1	0	31,25
0,03125	2	0,30103	30,005
0,0625	4	0,60206	28,94
0,125	8	0,90309	28,1
0,25	16	1,20412	27,05
0,5	32	1,50515	26,09
1,0	64	1,80618	25,13
2,0	128	2,10721	24,165
4,0	256	2,40824	23,3

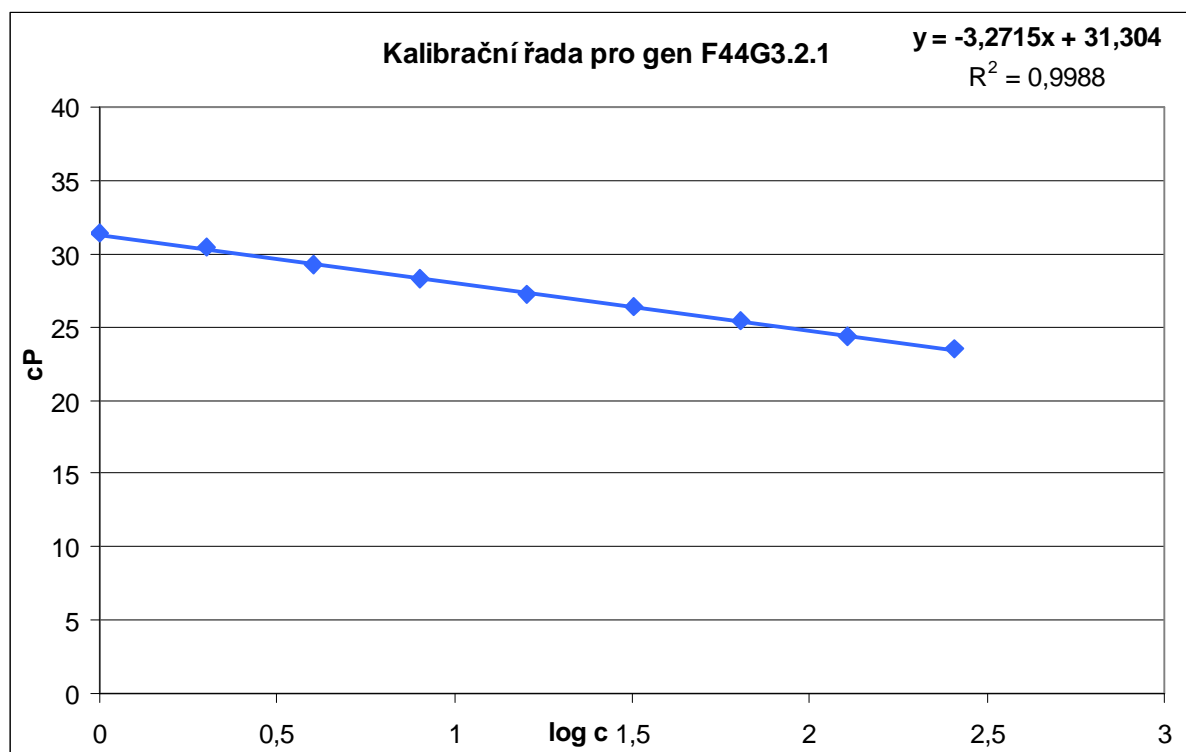
Tabulka č. 71:

$$y = k * x + q \rightarrow k = -3,1906$$

$$E = 10^{(-1/k)}$$

$$E = 10^{(-1/-3,1906)}$$

$$E = 2,0579$$



Graf č. 28:

Měření cP pro kalibrační řadu gen F44G3.2.1			
	teoret. Koncentrace	cP	Průměr cP
True	1	31,09	31,41
True		31,73	
True	2	30,53	30,415
True		30,3	
True	4	29,24	29,24
True		29,24	
True	8	28,28	28,255
True		28,23	
True	16	27,21	27,235
True		27,26	
True	32	26,41	26,375
True		26,34	
True	64	25,43	25,425
True		25,42	
True	148	24,31	24,395
True		24,48	
True	256	23,46	23,53
True		23,6	

Tabulka č. 72:

		osa X	osa Y
μl cDNA ve vzorku	teoretická koncentrace c	log c	cP
0,015625	1	0	31,41
0,03125	2	0,30103	30,415
0,0625	4	0,60206	29,24
0,125	8	0,90309	28,255
0,25	16	1,20412	27,235
0,5	32	1,50515	26,375
1,0	64	1,80618	25,425
2,0	128	2,10721	24,395
4,0	256	2,40824	23,53

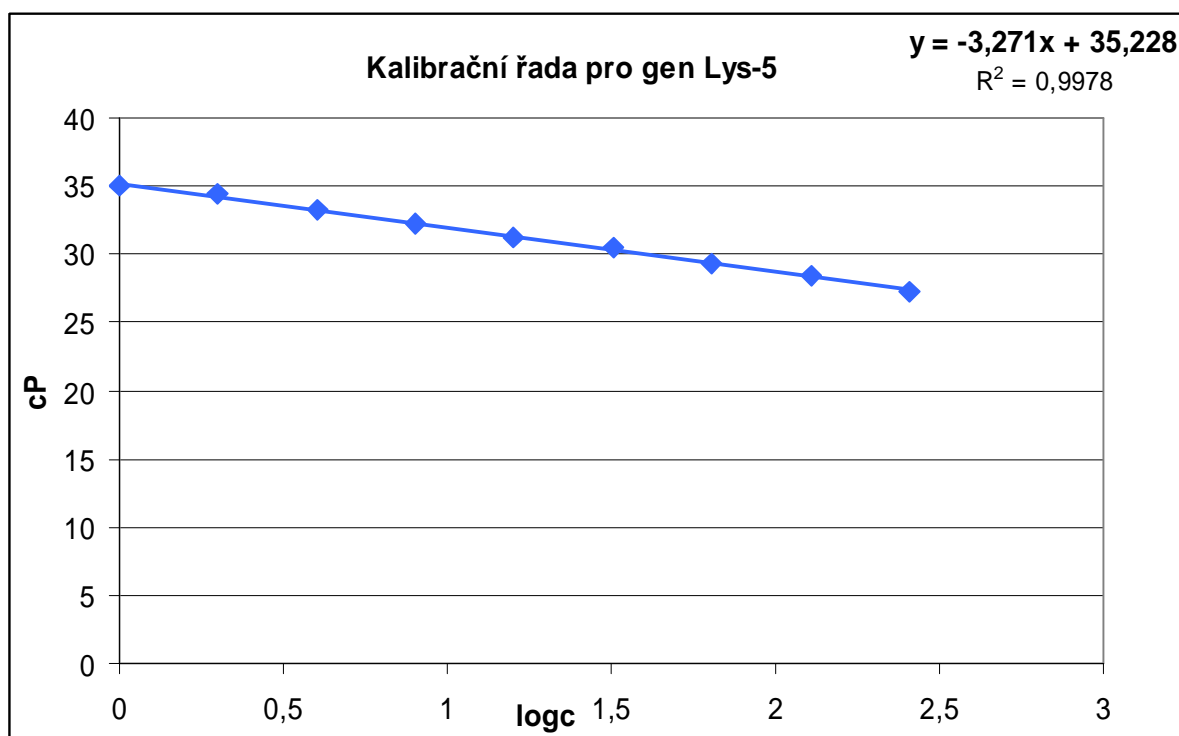
Tabulka č. 73:

$$y = k * x + q \rightarrow k = -3,2715$$

$$E = 10^{(-1/k)}$$

$$E = 10^{(-1/-3,2715)}$$

$$E = 2,0215$$



Graf č. 29:

Měření cP pro kalibrační řadu gen Lys-5			
	teoret. Koncentrace	cP	Průměr cP
True	1	34,97	35,05
True		35,13	
True	2	34,18	34,415
True		34,65	
True	4	33,17	33,275
True		33,38	
True	8	32,17	32,235
True		32,3	
True	16	31,24	31,255
True		31,27	
True	32	30,37	30,445
True		30,52	
True	64	29,19	29,275
True		29,36	
True	128	28,58	28,465
True		28,35	
True	256	27,12	27,19
True		27,26	

Tabulka č. 74:

		osa X	osa Y
µl cDNA ve vzorku	teoretická koncentrace c	log c	cP
0,015625	1	0	35,05
0,03125	2	0,30103	34,415
0,0625	4	0,60206	33,275
0,125	8	0,90309	32,235
0,25	16	1,20412	31,255
0,5	32	1,50515	30,445
1	64	1,80618	29,275
2	128	2,10721	28,465
4	256	2,40824	27,19

Tabulka č. 75:

$$y = k * x + q \rightarrow k = -3,2715$$

$$E = 10^{(-1/k)}$$

$$E = 10^{(-1/-3,271)}$$

$$E = 2,0217$$