



ELSEVIER

Contents lists available at ScienceDirect

## Early Human Development

journal homepage: [www.elsevier.com/locate/earlhumdev](http://www.elsevier.com/locate/earlhumdev)

## Cerebral oxygenation reflects fetal development in preterm monochorionic and dichorionic twins

Peter Korček\*, Jan Širc, Zbyněk Straňák

Institute for the Care of Mother and Child - Neonatology, Podolské nábřeží 157/36, Prague 14700, Czech Republic  
3rd Faculty of Medicine - Charles University, Ruská 2411/87, Prague 10000, Czech Republic

## ARTICLE INFO

## Keywords:

Cerebral oxygenation  
Monochorionic  
Dichorionic  
Preterm  
Twins

## ABSTRACT

**Background:** Cerebral oxygenation (crSO<sub>2</sub>) monitoring is increasingly used in high-risk infants. Monochorionic twins suffer from specific fetal pathologies that can affect cerebral hemodynamics. Limited data are available on crSO<sub>2</sub> and blood flow patterns in this population after birth.

**Objective:** To evaluate crSO<sub>2</sub> changes in preterm monochorionic and dichorionic twins during the first 72 h of life.

**Methods:** Near-infrared spectroscopy was used to measure crSO<sub>2</sub> in 62 infants from 31 twin pregnancies < 32 weeks of gestation. The study group was divided into 4 subgroups: donor (1) and recipient (2) monochorionic twins (with twin-twin transfusion syndrome), fetal growth restriction (FGR) infants (3) and twins without fetal compromise (4).

**Results:** There was significant difference in birth weight ( $p < 0.001$ ) among 4 subgroups. We observed significant variation in crSO<sub>2</sub> among the subgroups using mixed model analysis ( $p < 0.001$ ). The recipient twins exhibited the lowest crSO<sub>2</sub> (mean  $\pm$  SE) throughout the study period ( $76 \pm 0.3\%$ ), whereas the FGR and donor twins presented with the highest values ( $86 \pm 0.3\%$  and  $83 \pm 0.4\%$  respectively). We found no statistically significant differences in neonatal mortality and morbidity among subgroups.

**Conclusion:** Our study revealed significant correlation between crSO<sub>2</sub> values postnatally and underlying fetal pathology in monochorionic and dichorionic preterm twins.

## 1. Introduction

Despite improvements in perinatal outcomes in recent decades, multiple pregnancies are associated with increased risks of complications including preterm birth, fetal growth restriction (FGR), twin-twin transfusion syndrome (TTTS) and congenital abnormalities [1,2]. There are three ways twins can exist in the uterus: dichorionic-diamniotic, monochorionic-diamniotic and rarely monochorionic-monoamniotic twins [1,2].

Monochorionic twin pregnancies can suffer from TTTS, specific complication due to pathological anastomoses in the shared placenta leading to unbalanced blood flow through arterio-venous anastomoses between twins [2,3]. This condition causes hypervolemia, higher afterload through increased vascular resistance, hypertrophic cardiomyopathy and finally cardiac failure in the recipient twin [4,5]. In contrast, the donor twin is hypovolemic, has low cardiac output, tissue hypoperfusion and activated renin-angiotensin-aldosterone axis [4,5].

Alternatively, selective FGR can occur in either monochorionic or

dichorionic twin pregnancies and represents uneven placental distribution between twins [4,5]. Placental insufficiency can lead to “brain-sparing” effect - cardiovascular adaptation of the fetus to maintain adequate cerebral perfusion [6].

Neurodevelopmental outcome remains the most challenging issue in multiple birth. Fetal circulatory disturbances and immature vasculature, specifically in the germinal matrix and periventricular white matter, increase the risk for serious perinatal events and worse neurodevelopmental outcome [7–10]. Multiple risk factors can further aggravate the brain development - low baseline cerebral blood flow, high oxygen extraction, myocardial dysfunction, decreased cardiac output and systemic hypotension [11–13].

Accurate measurement of circulatory dysfunction, including cerebral tissue oxygenation (crSO<sub>2</sub>) is useful in early postnatal period [14,15]. Near-infrared spectroscopy (NIRS) becomes commonly used in critically ill infants and offers non-invasive monitoring of organ perfusion [11,16]. However, limited data are available in twin preterm infants with respect to cerebral tissue perfusion.

\* Corresponding author at: Institute for the Care of Mother and Child - Neonatology, Podolské nábřeží 157, Prague 14700, Czech Republic.

E-mail address: [peterkorcek.upmd@gmail.com](mailto:peterkorcek.upmd@gmail.com) (P. Korček).

The aim of this prospective, observational study was to measure crSO<sub>2</sub> using NIRS in preterm monochorionic and dichorionic twins during the first 72 h of life and find out correlation between underlying fetal conditions and crSO<sub>2</sub> development.

## 2. Materials and methods

### 2.1. Subjects

The institutional Ethical Committee of Institute for the Care of Mother and Child approved the study under the guidelines of the Helsinki Declaration (reference SOP 15/05/2008). Written informed consent was obtained from parents of all infants enrolled in the study. Preterm infants from multiple pregnancies < 32 weeks of gestation were enrolled and followed-up in this prospective, observational study. Patients with serious contributing morbidities were excluded: prenatally diagnosed congenital malformations and chromosomal abnormalities, prenatally acquired brain lesion, birth below limit of viability (gestational age < 24 + 0), need of chest compression at the delivery room and significant skin lesion contraindicating the use of NIRS sensor. The patient enrollment took place between October 2016 and January 2018 at the Institute for the Care of Mother and Child, Prague.

### 2.2. NIRS

Cerebral regional oxygenation was measured with a NIRS monitor (INVOS 5100C, Medtronic, Dublin, Ireland) with sample rate of 1 Hz. Measurements started within 1 h from birth and lasted up to 72 h of age. A transducer (INVOS Cerebral Oximetry Infant-Neonatal sensor, Medtronic, Dublin, Ireland) was placed on the frontoparietal side of infant's head. The method takes advantage of near-infrared spectral absorption by deoxygenated (dHb) and oxygenated (oxyHb) hemoglobin. Using Beer-Lambert law and machine-specific detection algorithms, oxyHb and dHb can be calculated into percentage oxygenation ( $\text{oxyHb} / [\text{oxyHb} + \text{dHb}]$ ) with range 0–100%. NIRS represents mainly venous oxygen saturation as 70–80% of cerebral blood is venous blood [13]. Artifacts in crSO<sub>2</sub> were removed manually before results were analyzed. Artifacts were defined as: changes in crSO<sub>2</sub> that could not be physiologically explained (e.g. a 30% step change between 2 subsequent data points) or changes that were accompanied by severe distortion in the other parameters suggesting infant movement or handling. Thereafter, crSO<sub>2</sub> was averaged for every 1-hour period. No action was taken based on recorded values.

### 2.3. Definition of morbidities

Twin-Twin Transfusion Syndrome was defined using the following criteria: a single placenta, same sex, and significant amniotic fluid volume discordance between the two fetuses - with a deep vertical pocket of  $\geq 8$  cm in the sac of the recipient twin and  $\leq 2$  cm in the sac of the donor twin. Fetal therapy (selective laser coagulation of placental vessels) was performed accordingly [17]. Fetal Growth Restriction was diagnosed prenatally by obstetricians using 2D and Doppler measurement of the fetus (abdominal circumference, estimated fetal weight, end-diastolic flow patterns in the umbilical and uterine artery) [18].

Fetal growth restriction was confirmed postnatally using Fenton growth charts [19]. Other neonatal outcomes (respiratory distress syndrome, patent ductus arteriosus, intraventricular hemorrhage, necrotizing enterocolitis and periventricular leukomalacia) were followed up according to the Vermont Oxford definition [20]. Blood counts were measured with a Coulter Micro Dif II (Coulter Electronics Ltd., Fullerton, US) in all patients up to 2 h after admission. Transfusion was indicated according to hemoglobin (Hb) level (< 120 g/L) and clinical judgment.

### 2.4. Statistical analysis

The study group was divided into 4 subgroups based on major fetal pathology: donor (1) and recipient (2) monochorionic twins, FGR infants (3) and newborns without any known fetal pathology (4). Statistical analysis reflected subjects' specificity (twins) using linear mixed model for scale variables and generalized linear model for categorical variables. Patterns of crSO<sub>2</sub> were evaluated using mixed model analysis with random effect (pair) and repeated measurement based on covariance structure. Cerebral oxygenation graph was modelled using estimated marginal mean and standard error. Clinical variables are reported using descriptive statistical methods. All reported p-values are two-sided and  $p < 0.05$  was considered statistically significant. The analysis was performed with Statistical Package for Social Sciences (SPSS 26.0; SPSS Institute, Chicago, IL, USA).

## 3. Results

### 3.1. Neonatal outcome

Overall, 62 preterm newborns were included. Characteristics of the study group and subgroups are expressed in Table 1. The incidence of severe neonatal morbidities was low among subgroups and did not allow to detect any statistical differences even when we analyzed composite morbidity (hypotension, necrotizing enterocolitis, intraventricular hemorrhage and periventricular leukomalacia;  $p = 0.089$ ). We found significant difference in birth weight ( $p < 0.001$ ) among the 4 subgroups. No statistically significant differences were noticed in neonatal mortality. No significant differences were found in Hb after admission and red blood cell transfusion (RBCT) in the first 72 h among the subgroups ( $p = 0.501$  and  $p = 0.337$ , respectively).

### 3.2. Cerebral oxygenation measurement

A total of 4464 1-hour crSO<sub>2</sub> averages were used for analysis. The recipient twins exhibited the lowest crSO<sub>2</sub> (expressed as mean  $\pm$  SE) throughout the study period ( $76 \pm 0.3\%$ ), whereas the FGR and donor twins presented with the highest values ( $86 \pm 0.3\%$  and  $83 \pm 0.4\%$  respectively). Newborns without any observed fetal complication (TTTS or FGR) presented with crSO<sub>2</sub> of  $81 \pm 0.2\%$ . Graphical overview of crSO<sub>2</sub> development among the subgroups (using estimated marginal mean and standard error) is shown in Fig. 1. We observed significant variances in crSO<sub>2</sub> over time among the subgroups using mixed model analysis with random effect (pair) and repeated measurement based on covariance structure (type III tests of fixed effects:  $p < 0.001$ ). Using estimates of fixed effects, significant differences were found between the subgroup with no fetal compromise (reference subgroup) and FGR and recipient infants ( $p < 0.001$  and  $p = 0.038$ , respectively). When analyzing the reference subgroup and donor twins only, the difference was not significant ( $p = 0.356$ ). Moreover, the crSO<sub>2</sub> values for donor twins were comparable with the reference subgroup after 36 h. When Hb was added to the mixed model, the analysis revealed significant correlation between Hb and crSO<sub>2</sub> (type III tests of fixed effects:  $p < 0.001$ ). Using mixed model test, there was no significant correlation between RBCT and crSO<sub>2</sub> ( $p = 0.284$ ).

## 4. Discussion

TTTS and FGR represent the most common and severe complications in multiple pregnancies [2,4,6]. Involved fetuses suffer from hemodynamic disturbances that may affect cerebral oxygenation and tissue perfusion postnatally [5,6]. Our study demonstrates the important role of fetal underlying conditions on postnatal cerebral tissue perfusion.

We observed the lowest crSO<sub>2</sub> in recipient twins throughout the

**Table 1**  
Study population and subgroups.

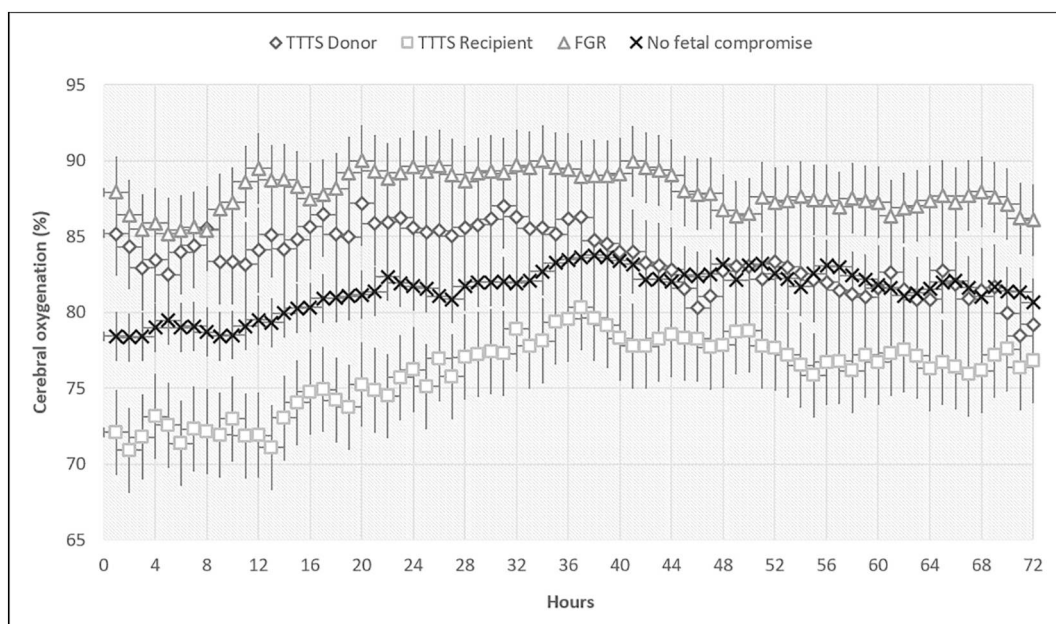
Variable	Study group	Study subgroups			
		TTTS Donor	TTTS Recipient	FGR	No fetal compromise
Number of patients, no. (% of all infants)	62 (100%)	9 (15%)	9 (15%)	11 (18%)	33 (52%)
MCDA twin, no. (%)	38 (61%)	9 (100%)	9 (100%)	7 (64%)	13 (39%)
Fetal therapy – SLCPV, no. (%)	4 (7%)	2 (22%)	2 (22%)	0	0
Gestational age, weeks	29.0 ± 2.1	29.0 ± 1.4	29.0 ± 1.4	30.0 ± 1.9	28.7 ± 2.4
Birth weight, grams	1111 ± 322	856 ± 289	1228 ± 288	960 ± 251	1197 ± 314
Hemoglobin at birth, g/L	171 ± 30	161 ± 48	177 ± 45	163 ± 27	174 ± 19
RBCT in the first 72 h, n (%)	3 (5%)	2 (22%)	0	1 (9%)	0
APGAR, 1 min	6.4 ± 1.6	5.9 ± 2.1	7.1 ± 1.5	6.7 ± 0.9	6.1 ± 1.6
APGAR, 5 min	7.8 ± 1.4	7.0 ± 2.4	8.4 ± 1.1	7.9 ± 0.7	7.7 ± 1.1
C-section delivery, no. (%)	60 (97%)	9 (100%)	9 (100%)	11 (100%)	31 (94%)
Male gender, no. (%)	40 (65%)	6 (67%)	6 (67%)	9 (82%)	19 (58%)
ANS (completed), no. (%)	50 (87%)	8 (89%)	8 (89%)	10 (91%)	24 (73%)
Intubated at delivery suite, no. (%)	5 (8%)	1 (11%)	0	0	4 (12%)
RDS, no. (%)	56 (90%)	7 (78%)	8 (89%)	11 (100%)	30 (91%)
Pulmonary hemorrhage, no. (%)	1 (2%)	1 (11%)	0	0	0
PDA treated, no. (%)	3 (5%)	1 (11%)	0	1 (9%)	1 (3%)
Hypotension treated, no. (%)	11 (18%)	3 (33%)	2 (22%)	2 (18%)	4 (12%)
Respiratory support at 36 weeks, no. (%)	13 (2%)	4 (44%)	2 (22%)	1 (9%)	6 (18%)
NEC, no. (%)	4 (7%)	1 (11%)	2 (22%)	0	1 (3%)
EOS, no. (%)	6 (10%)	1 (11%)	2 (22%)	0	3 (9%)
PIVH grade I-II, no. (%)	3 (5%)	0	0	1 (9%)	2 (6%)
PIVH grade III-IV, no. (%)	2 (3%)	1 (11%)	0	0	1 (3%)
PVL, no. (%)	1 (2%)	1 (11%)	0	0	0

Continuous data are presented as mean ± SD. TTTS = twin-twin transfusion syndrome, FGR = fetal growth restriction, MCDA = monochorionic diamniotic, SLCPV = selective laser coagulation of placental vessels, RBCT = red blood cell transfusion, ANS = antenatal corticosteroids, RDS = respiratory distress syndrome, PDA = persistent ductus arteriosus, NEC = necrotizing enterocolitis, EOS = early-onset sepsis, PIVH = peri/intraventricular hemorrhage, PVL = periventricular leukomalacia.

study period. The main contributing factor might be substantial hypertrophic cardiomyopathy causing reduction in myocardial compliance and leading to outflow obstruction and poorer cardiac output [21–23]. These changes can decrease cerebral blood flow and oxygenation. Cerebral vasoconstriction and ischemia mediated through endothelin ET<sub>A</sub> receptors are also involved [24]. Targeted neonatal echocardiography (TNE) confirmed hypertrophic cardiomyopathy in all our enrolled recipients (TNE was not part of the analysis). Furthermore, polycythemia (leading to higher blood viscosity) can reduce cerebral blood flow and crSO<sub>2</sub> [15]. Recipient twins displayed the highest Hb

values at birth among the subgroups and this relative polycythemia-hyperviscosity significantly correlated with lower crSO<sub>2</sub> within the subgroup.

In contrast, the mean crSO<sub>2</sub> in donor twins was significantly higher. Donor twins suffer from absolute hypovolemia which results in the redistribution of blood flow [5,22]. Renal hypoperfusion activates the renin-angiotensin system that causes increased vascular resistance with smooth muscle hypertrophy [5,21]. These changes can lead to secondary placental dysfunction and fetal growth restriction [25]. Due to pathological anastomoses, donor twins commonly develop anemia that



**Fig. 1.** Postnatal cerebral oxygenation patterns based on underlying fetal pathology. TTTS = twin-twin transfusion syndrome; FGR = fetal growth restriction.

can augment the established hyperdynamic circulation [26]. As a consequence, cerebral blood flow increases to maintain adequate tissue oxygenation.

Although FGR infants exhibited high  $crSO_2$  values similar to donor twins, we hypothesize different pathophysiological mechanisms in this subgroup. Primary placental insufficiency and subsequent chronic fetal hypoxia induce adaptive cardiac output redistribution to favour essential organs, including the brain - the “brain sparing” effect [27]. Furthermore, animal models showed an increase in cerebral capillaries size as a reaction to hypoxic environment [28,29]. Cohen et al. demonstrated the effect persistence during postnatal adaptation which could explain higher cerebral blood flow and  $crSO_2$  [30]. Furthermore, severe hypoglycemia is commonly observed in these infants, and this can also cause a significant increase in the cerebral blood flow [11,14]. There was no specific monitoring of the glucose levels as part of this study.

In the subgroup of newborns without fetal compromise,  $crSO_2$  gradually improved over the first 36 h and then stabilized thereafter. This is in accordance with available literature as relatively large study on preterm infants < 32 weeks showed that average  $crSO_2$  at admission was 65%, peaked at around 36 h of age and then slowly declined in the first 72 h [31]. Furthermore, other authors obtained  $crSO_2$  values from 439 infants < 32 weeks gestation in the first three days of life and the resulting  $crSO_2$  range was 55–85% [32,33]. There are a number of reasons for this pattern. During the first days of life, preterm infants demonstrate generally low baseline cerebral blood flow and higher oxygen consumption with increased oxygen extraction in preterm infants [12,34]. In addition, myocardial dysfunction with decreased cardiac output and systemic hypoperfusion can contribute to lower  $crSO_2$  during this period [12]. As myocardial performance improves (ventricular stroke volume and cardiac output increase),  $crSO_2$  gradually increases and stabilizes [12].

Despite varied  $crSO_2$  patterns, we did not find significant difference in morbidity or mortality among the subgroups. This could be explained by a small overall number of patients, as well as relatively low number of infants within the subgroups. Furthermore,  $crSO_2$  did not reach critical levels even in the recipient twins who presented with the lowest values. In one study of preterm infants < 30 weeks gestation, increased mortality was observed if  $crSO_2$  dropped below 40% [35]. Animal studies revealed that  $crSO_2$  of 55% represents a safety level or cerebral oxygenation, in which brain maintains physiologic metabolism and only it took 30 min of  $crSO_2$  < 35% to initiate subcellular damage and several hours to cause neuronal apoptosis [32,36]. Nevertheless, TTTS or FGR infants do suffer from increased morbidity and mortality and there exists a correlation between  $crSO_2$  and later neurodevelopment [7,37,38].

The presented  $crSO_2$  patterns in these infants could provide some insight into altered cerebral hemodynamics that stems from the underlying fetal pathology.

#### 4.1. Limitations

We did not analyze correlation between  $crSO_2$  and other variables (i.e.  $SpO_2$ , blood pressure, acid base parameters, ventilatory setting and TNE) that would provide a more complete picture of cerebral and systemic hemodynamics.

#### 4.2. Conclusions

Postnatal cerebral oxygenation among monochorionic and dichorionic preterm twins correlates significantly with the underlying fetal pathology. Early detection of altered cerebral tissue oxygenation may decrease the risk of cerebral impairment and worsened neurodevelopmental outcome.

## Funding

This work was supported by the Research Project of the Czech Health Research Council NV17-31403A.

## CRedit authorship contribution statement

**Peter Korček:** Conceptualization, Methodology, Funding acquisition, Formal analysis, Writing - original draft, Writing - review & editing. **Jan Širc:** Funding acquisition, Writing - original draft, Writing - review & editing. **Zbyněk Straňák:** Formal analysis, Writing - original draft, Supervision, Writing - review & editing.

## Declaration of competing interest

The authors declare that they have no known competing financial interests or personal relationships that could have appeared to influence the work reported in this paper.

## References

- [1] A. Khalil, M. Rodgers, A. Baschat, A. Bhide, E. Gratacos, K. Hecher, et al., ISUOG Practice Guidelines: role of ultrasound in twin pregnancy, *Ultrasound Obstet. Gynecol.* 47 (2016) 247–263.
- [2] L. Lewi, P. Lewi, A. Diemert, J. Jani, L. Gucciardo, T. van Mieghem, et al., The role of ultrasound examination in the first trimester and at 16 weeks' gestation to predict fetal complications in monochorionic diamniotic twin pregnancies, *Am. J. Obstet. Gynecol.* 199 (2008) 493.e1–493.e7.
- [3] R.A. Quintero, W.J. Morales, M.H. Allen, P.W. Bornick, P.K. Johnson, M. Kruger, Staging of twin-twin transfusion syndrome, *J. Perinatol.* 19 (1999) 550–555.
- [4] J.S. Moldenhauer, M.P. Johnson, Diagnosis and management of complicated monochorionic twins, *Clin. Obstet. Gynecol.* 88 (2015) 632–642.
- [5] N. Manning, N. Archer, Cardiac manifestations of twin-to-twin transfusion syndrome, *Twin Res. Hum. Genet.* 19 (2016) 246–254.
- [6] T. Stampalija, D. Casati, L. Monasta, R. Sassi, M.W. Rivolta, M.L. Muggiasca, et al., Brain sparing effect in growth-restricted fetuses is associated with decreased cardiac acceleration and deceleration capacities: a case-control study, *BJOG* 123 (2016) 1947–1954.
- [7] K.E.A. Hack, J.B. Derks, S.G. Elias, A. Franx, E.J. Roos, S.K. Voerman, et al., Increased perinatal mortality and morbidity in monochorionic versus dichorionic twin pregnancies: clinical implications of a large Dutch cohort study, *BJOG* 115 (2008) 58–67.
- [8] E. Lopriore, G. van Wezel-Meijler, J.M. Middeldorp, M. Sueters, F.P. Vandenbussche, F.J. Walther, Incidence, origin, and character of cerebral injury in twin-to-twin transfusion syndrome treated with fetoscopic laser surgery, *Am. J. Obstet. Gynecol.* 194 (2006) 1215–1220.
- [9] Z. Straňák, P. Korček, L. Hympanová, M. Kynčl, L. Krofta, Prenatally acquired multiple limb ischemia in a very low birth weight monochorionic twin, *Fetal Diagn. Ther.* 41 (2017) 237–238.
- [10] P. Korček, Z. Straňák, Fetal distress and circulatory disturbance in monochorionic twins: possible risk factors for sialadenitis? *Int. J. Pediatr. Otorhinolaryngol.* 79 (2015) 2476–2478.
- [11] N. Baik, B. Urlesberger, B. Schwabegger, G.M. Schmölzer, A. Avian, G. Pichler, Cerebral haemorrhage in preterm neonates: does cerebral regional oxygen saturation during the immediate transition matter? *Arch. Dis. Child. Fetal Neonatal Ed.* 100 (2015) 422–427.
- [12] S. Noori, M. McCoy, M.P. Anderson, F. Ramji, I. Seri, Changes in cardiac function and cerebral blood flow in relation to peri/intraventricular hemorrhage in extremely preterm infants, *J. Pediatr.* 164 (2014) 264–270.
- [13] T. Alderliesten, P.M.A. Lemmers, J.J.M. Smarius, R.E. van de Vosse, W. Baerts, F. van Bel, Cerebral oxygenation, extraction, and autoregulation in very preterm infants who develop peri-intraventricular hemorrhage, *J. Pediatr.* 162 (2013) 698–704.
- [14] K.D. Liem, G. Greisen, Monitoring of cerebral haemodynamics in newborn infants, *Early Hum. Dev.* 86 (2010) 155–158.
- [15] P. Korček, Z. Straňák, J. Širc, G. Naulaers, The role of near-infrared spectroscopy monitoring in preterm infants, *J. Perinatol.* 37 (2017) 1070–1077.
- [16] S. Noori, I. Seri, Hemodynamic antecedents of peri/intraventricular hemorrhage in very preterm neonates, *Semin. Fetal Neonatal Med.* 20 (2015) 232–237.
- [17] E. Kontopoulos, R.H. Chmait, R.A. Quintero, Twin-to-twin transfusion syndrome: definition, staging, and ultrasound assessment, *Twin Res. Hum. Genet.* 19 (2016) 175–183.
- [18] S.J. Gordijn, I.M. Beune, B. Thilaganathan, A. Papageorgiou, A.A. Baschat, P.N. Baker, et al., Consensus definition of fetal growth restriction: a Delphi procedure, *Ultrasound Obstet. Gynecol.* 48 (2016) 333–339.
- [19] T.R. Fenton, J.H. Kim, A systematic review and meta-analysis to revise the Fenton growth chart for preterm infants, *BMC Pediatr.* 13 (2013) 59.
- [20] J.D. Horbar, The Vermont Oxford Network: evidence-based quality improvement for neonatology, *Pediatrics* 103 (1999) 350–359.



- [21] I. Mercanti, A. Boivin, B. Wo, V. Vlieghe, C. Le Ray, F. Audibert, et al., Blood pressures in newborns with twin-twin transfusion syndrome, *J. Perinatol.* 31 (2011) 417–424.
- [22] J.J. Stirnemann, M. Mougeot, F. Proulx, B. Nasr, M. Essaoui, J.C. Fouron, et al., Profiling fetal cardiac function in twin to twin transfusion syndrome, *Ultrasound Obstet. Gynecol.* 35 (2010) 19–27.
- [23] D. Mahieu-Caputo, A. Meulemans, J. Martinovic, M.C. Gubler, A.L. Delezoide, F. Muller, et al., Paradoxical activation of the renin-angiotensin system in twin-twin transfusion syndrome: an explanation for cardiovascular disturbances in the recipient, *Pediatr. Res.* 58 (2005) 685–688.
- [24] A. Gulati, Endothelin receptors, mitochondria and neurogenesis in cerebral ischemia, *Curr. Neuropharmacol.* 14 (2016) 619–626.
- [25] D. Mahieu-Caputo, F. Muller, D. Joly, M.C. Gubler, J. Lebidois, L. Fermont, et al., Pathogenesis of twin-twin transfusion syndrome: the renin-angiotensin system hypothesis, *Fetal Diagn. Ther.* 16 (2001) 241–244.
- [26] C. Bolch, M. Fahey, D. Reddihough, K. Williams, S. Reid, A. Guzy, et al., Twin-to-twin transfusion syndrome neurodevelopmental follow-up study (neurodevelopmental outcomes for children whose twin-to-twin transfusion syndrome was treated with placental laser photocoagulation), *BMC Pediatr.* 18 (2018) 256.
- [27] S.L. Miller, P.S. Huppi, C. Mallard, The consequences of fetal growth restriction on brain structure and neurodevelopmental outcome, *J. Physiol.* 594 (2016) 807–823.
- [28] E. Hernandez-Andrade, J.A. Serralde, R. Cruz-Martinez, Can anomalies of fetal brain circulation be useful in the management of growth restricted fetuses? *Prenat. Diagn.* 32 (2012) 103–112.
- [29] S. Rees, C. Mallard, S. Breen, M. Stringer, M. Cock, R. Harding, Fetal brain injury following prolonged hypoxemia and placental insufficiency: a review, *Comp. Biochem. Physiol. A Mol. Integr. Physiol.* 119 (1998) 653–660.
- [30] E. Cohen, W. Baerts, T. Alderliesten, J. Derks, P. Lemmers, F. van Bel, Growth restriction and gender influence cerebral oxygenation in preterm neonates, *Arch. Dis. Child. Fetal Neonatal Ed.* 101 (2016) 156–161.
- [31] T. Alderliesten, L. Dix, W. Baerts, A. Caicedo, S. van Huffel, G. Naulaers, et al., Reference values of regional cerebral oxygen saturation during the first 3 days of life in preterm neonates, *Pediatr. Res.* 79 (2016) 55–64.
- [32] G. Greisen, B. Andresen, A.M. Plomgaard, S. Hyttel-Sørensen, Cerebral oximetry in preterm infants: an agenda for research with a clear clinical goal, *Neurophotonics* 3 (2016) 031407.
- [33] M. Kenosi, G. Naulaers, C.A. Ryan, E.M. Dempsey, Current research suggests that the future looks brighter for cerebral oxygenation monitoring in preterm infants, *Acta Paediatr.* 104 (2015) 225–231.
- [34] K.K. Balegar, M.J. Stark, N. Briggs, C.C. Andersen, Early cerebral oxygen extraction and the risk of death or sonographic brain injury in very preterm infants, *J. Pediatr.* 164 (2014) 475–480.
- [35] R.M. Cerbo, L. Scudeller, R. Maragliano, R. Cabano, M. Pozzi, C. Tinelli, et al., Cerebral oxygenation, superior vena cava flow, severe intraventricular hemorrhage and mortality in 60 very low birth weight infants, *Neonatology* 108 (2015) 246–252.
- [36] C.S. da Costa, M. Czosnyka, P. Smielewski, S. Mitra, G.N. Stevenson, T. Austin, Monitoring of cerebrovascular reactivity for determination of optimal blood pressure in preterm infants, *J. Pediatr.* 167 (2015) 86–91.
- [37] S.J. Korzeniewski, E.N. Allred, R.M. Joseph, T. Heeren, K.C.K. Kuban, T.M. O’Shea, et al., Neurodevelopment at age 10 years of children born < 28 weeks with fetal growth restriction, *Pediatrics* 140 (2017) e20170697.
- [38] E.A. Verhagen, K.N. van Braeckel, C.N. van der Veere, H. Groen, P.H. Dijk, C.V. Hulzebos, et al., Cerebral oxygenation is associated with neurodevelopmental outcome of preterm children at age 2 to 3 years, *Dev. Med. Child Neurol.* 57 (2015) 449–455.

## STATE-OF-THE-ART

# The role of near-infrared spectroscopy monitoring in preterm infants

P Korček<sup>1,2</sup>, Z Straňák<sup>1,2</sup>, J Širc<sup>1,2</sup> and G Naulaers<sup>3</sup>

Neurological morbidities such as peri/intraventricular hemorrhage and periventricular leukomalacia largely determine the neurodevelopmental outcome of vulnerable preterm infants and our aim should be to minimize their occurrence or severity. Bed-side neuromonitoring could provide valuable pieces of information about possible hemodynamic disturbances that are significantly associated with neurological morbidities and increased mortality. Near-infrared spectroscopy offers evaluation of regional cerebral oxygenation, which in conjunction with other non-invasive methods may give us a more complete picture about end-organ perfusion. This monitoring tool could help us fully understand the pathophysiology of severe neurological morbidities and guide our management in order to reduce their incidence.

*Journal of Perinatology* advance online publication, 4 May 2017; doi:10.1038/jp.2017.60

## INTRODUCTION

The central nervous system of extremely preterm infants is highly susceptible to perinatal injuries due to the presence of immature vasculature in the germinal matrix and periventricular white matter.<sup>1</sup> Furthermore, the sensitivity of cerebral tissue to hypoxia-ischemia<sup>2</sup> stems from already low baseline cerebral blood flow (CBF) and high oxygen consumption with increased oxygen extraction.<sup>3,4</sup> In addition, myocardial dysfunction, decreased cardiac output and systemic hypoperfusion, commonly observed in the first postnatal days, can aggravate the situation even further.<sup>4</sup> Owing to these vulnerabilities, it is perhaps not surprising that the events occurring during the perinatal transition and postnatal adaptation (intrapartum complications, impaired hemodynamic and respiratory adaptation, medical interventions) may have significant short- and long-term impact on the maturing nervous system.<sup>3,5,6</sup>

Specifically, the incidence of severe peri-intraventricular hemorrhage (PIVH) and periventricular leukomalacia (PVL) is an inverse function of gestational age with extremely preterm infants being affected the most.<sup>5,7</sup> These morbidities significantly correlate with neurodevelopmental impairment and majority of PIVH events occur during the first postnatal days.<sup>4,5,7</sup> As already mentioned, the multifactorial development of PIVH/PVL can be associated with impaired regional as well as systemic hemodynamic status.<sup>2–6</sup> A typical example can be seen in reperfusion injury that may precede PIVH/PVL. With myocardial function improving over the course of the first postnatal days, the initially low CBF can turn to relative cerebral hyperperfusion.<sup>3,4,6,8,9</sup>

Understanding end-organ perfusion can be important in relation to the development of PIVH and PVL.<sup>1,2,8,10</sup> Nevertheless, the commonly used variables (like peripheral oxygen saturation (SpO<sub>2</sub>), mean arterial blood pressure (MABP), heart rate) do not provide us with the whole hemodynamic picture and certain parameters such as cardiac output or superior vena cava (SVC)

flow can be difficult to obtain.<sup>1,2,8,10,11</sup> Non-invasive measurements such as targeted neonatal echocardiography and near-infrared spectroscopy (NIRS) could help us identify and monitor high-risk infants.<sup>5,12,13</sup> Although targeted neonatal echocardiography is frequently used by clinicians to guide their hemodynamic interventions in preterm infants, there is little evidence on improving their outcome.<sup>13</sup> NIRS could give us valuable clues about regional oxygen saturation that adds extra piece of information about the cerebral tissue perfusion.<sup>10–12</sup>

## THEORETICAL AND PRACTICAL BACKGROUND

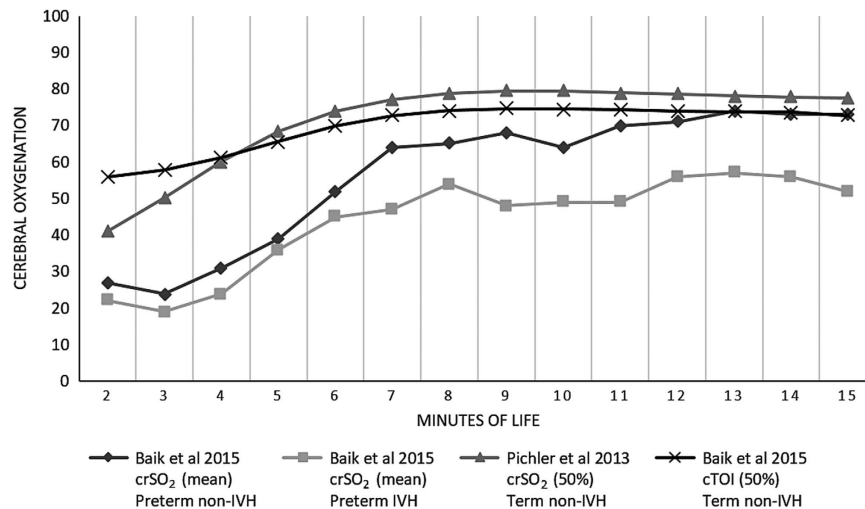
### NIRS technology

The concept of NIRS was first published in 1977<sup>14</sup> and used in neonates in 1985;<sup>15</sup> however, after almost 40 years of existence, its day-to-day clinical usage in preterm neonates remains controversial and not entirely supported.<sup>10</sup> The situation is even more puzzling given the tremendous advantages of the method in nowadays neonatal units—non-invasive, painless, bed-side, non-ionizing, continuous and portable monitoring of a patient.<sup>10–12</sup> From the technological point of view, the actual near-infrared light spectrum goes through most biological tissues. When we assume that all the other tissues remain stable (bone, muscle, skin), then the only changing parameter is the brain blood flow and oxygenation. In blood, there are two chromophores, deoxygenated and oxygenated hemoglobin (dHb and oxyHb, respectively), which absorb near-infrared light. Both dHb and oxyHb have their peak wavelength-dependent near-infrared spectral absorption. Depending on the NIRS devices two to four wavelengths are emitted between 700 and 850 nm in order to maximize the absorption separation between dHb and oxyHb and to eliminate the wavelength absorption by other molecules.<sup>10–12</sup> Using the Beer–Lambert law, values of oxyHb and dHb can be calculated. However, the difference between the light emitted and the light

<sup>1</sup>Institute for the Care of Mother and Child, Fetal Medicine Center, Prague, Czech Republic; <sup>2</sup>Third Faculty of Medicine, Prague, Czech Republic and <sup>3</sup>Department of Development and Regeneration, Katholieke Universiteit Leuven, Leuven, Belgium. Correspondence: Professor Z Straňák, Institute for the Care of Mother and Child, Fetal Medicine Center, Podolské nábřeží 157, Prague, 14700, Czech Republic.

E-mail: z.stranak@seznam.cz

Received 27 November 2016; revised 23 February 2017; accepted 3 April 2017



**Figure 1.** Cerebral oxygenation dynamics in the first 15 min of life in term and preterm infants, with and without intraventricular hemorrhage (IVH). Oxygenation was measured either by INVOS 5100 (cerebral hemoglobin oxygen saturation (crSO<sub>2</sub>)) or NIRO 200NX (cerebral tissue oxygenation index (cTOI)).

measured is not only caused by absorption but also by scattering. As we do not know the amount of scattering, absolute values cannot be calculated and therefore multiple detectors are used. If scattering is assumed to be equal for the different detectors, absolute values can be measured and oxyHb and dHb can be calculated into ratio-based percentage oxygen saturation (oxyHb/(oxyHb+dHb); range 0 to 100%) using different algorithms and methods.<sup>1,12</sup> Because of this, the displayed values are relative rather than absolute and are labeled regional/tissue oxygenation, regional/oxygen saturation or rSO<sub>2</sub> (analogous to SpO<sub>2</sub>).<sup>12</sup> As NIRS measures all blood in the brain, it is a mixed saturation value. Nonetheless, because 70% to 80% of the blood is venous blood it mainly reflects the venous oxygen saturation.<sup>10–12</sup> NIRS can be used on many somatic sites (renal, splanchnic tissue perfusion); however, the primary area of interest in neonates remains to be central nervous system.

#### Neonatal application and pathophysiology

Concerning neonatal application, soft and thin tissues on relatively large (and often hair-scarce) newborn head serve as relatively penetrable ‘window’ through which the brain can be monitored. Accordingly, the cerebral Hb oxygen saturation (crSO<sub>2</sub>) then reflects the regional balance between the oxygen supply and demand for the underlying tissue.<sup>10–12</sup> Cerebral blood volume, dHb, oxyHb and total Hb changes can also give extra information regarding changes in the blood flow; however, we will not discuss them in this article mainly because they can only be measured by specific NIRS instruments and are very prone to movement.<sup>4,9</sup> Cerebral oxygen supply depends on SpO<sub>2</sub>, Hb concentration and CBF.<sup>2</sup> Supposing there are no significant changes in the metabolic rate (hypoglycemia induces CBF increase), SpO<sub>2</sub> and Hb concentration, crSO<sub>2</sub> deviations suggest deviations in CBF (function of peripheral vascular resistance and cardiac output).<sup>1,2,4,9,16,17</sup> Finally, cerebral fractional tissue oxygen extraction (cFTOE) can be calculated if SaO<sub>2</sub> is known ((SaO<sub>2</sub> – crSO<sub>2</sub>)/SaO<sub>2</sub>). This variable is inversely related to CBF (decrease in CBF causes increase in cFTOE) and reflects the balance between cerebral oxygen supply and oxygen consumption.<sup>18,19</sup> Therefore, cFTOE can prove useful to separate cerebral hypoxic hypoxia (lack of oxygen with normal perfusion)<sup>3</sup> and high cFTOE can be associated with significant neurological injury in preterm infants in first postnatal days.<sup>4,6</sup> As

an indirect measurement of cerebral perfusion, NIRS has always excited neonatologists and researchers, who conducted a large number of studies in both term and preterm infants.<sup>10,11</sup>

#### Normative values

Many observational studies attempted to establish percentile charts for crSO<sub>2</sub> in the first postnatal days. Baik *et al.*<sup>20</sup> established centiles for tissue oxygenation index and cFTOE in term newborns without a need for medical support during the first 15 min of life (using NIRO 200NX). Similar findings in term infants were observed by Pichler *et al.*,<sup>21</sup> who used INVOS 5100 NIRS device to measure crSO<sub>2</sub>. Comparably, preterm infants without PIVH showed lower crSO<sub>2</sub> values initially; however, by the fifteenth minute of life the values reached values of term counterparts.<sup>2</sup> Interestingly, preterm infants who developed PIVH later had significantly lower crSO<sub>2</sub> throughout the first 15 min of life (Figure 1).<sup>2,20,21</sup> Fuchs *et al.*<sup>22</sup> showed that crSO<sub>2</sub> had risen after birth continuously from 37% (mean) at 1 min of age and had reached a steady state in the range of 61% to 84% roughly 7 min after birth. Similar findings were observed by Noori *et al.*<sup>9</sup> in term infants. However, in this study, after the plateau phase of crSO<sub>2</sub> they documented a decrease in cerebral oxygen saturation (increased cFTOE caused by reduced CBF) that could be caused by relatively significant left-to-right duct shunting. This CBF decrease was then followed by a gradual rise over the course of the first postnatal days. A relatively large study on preterm infants < 32 weeks showed that average crSO<sub>2</sub> at admission was 65% and rose with higher gestational age (1% per week). crSO<sub>2</sub> also peaked at around 36 h of age and then slowly declined in the first 72 h.<sup>23</sup> Furthermore, other authors obtained crSO<sub>2</sub> values from 439 preterm infants < 32 weeks gestation in the first 3 postnatal days and here crSO<sub>2</sub> range was 55% to 85%. For gestational age of 24 to 27 weeks, the 10th centile was around 55% using the INVOS device with the adult sensor.<sup>8,10</sup> Perhaps not surprisingly, in the newborn pigs, crSO<sub>2</sub> of 55% represents a safety level of cerebral oxygenation, in which the brain maintains physiological metabolism, including normal concentrations of lactate. However, it takes only 30 min of crSO<sub>2</sub> < 35% to trigger subcellular damage and several hours to cause neuronal apoptosis.<sup>8,12</sup> Finally, differences in crSO<sub>2</sub> and both gender and trophic status of preterm infants have also been studied. Cohen *et al.*<sup>17</sup> demonstrated that, in the first postnatal days, small-for-gestational age (SGA) infants exhibited slightly

increased cerebral oxygenation when compared with non-small-for-gestational age infants that might be explained by an increased CBF due to intrauterine 'brain-sparing' effect.

#### Medications and interventions

Impact of various interventions (including medication administration) on cerebral oxygen saturation was also investigated. For example, endotracheal suctioning seems to negatively affect cerebral hemodynamic status<sup>24</sup> and the magnitude of alteration depends on the mode of suctioning.<sup>25</sup> Caffeine administration in premature infants showed no significant effect on cerebral oxygenation,<sup>26</sup> although others observed transient decrease in this regard.<sup>27</sup> Also, the automated adjustment of inspired oxygen has no significant effect on  $crSO_2$  despite minimizing the frequency of hypoxic episodes.<sup>28</sup> Isolated bradycardia has the lowest impact on  $crSO_2$  while a combination of initial desaturation followed by bradycardia has the highest.<sup>29</sup> Ibuprofen did not significantly reduce CBF and cerebral oxygenation.<sup>30</sup> Inappropriate and aggressive ventilation with high mean airway pressures increases pulmonary vascular resistance, reduces pulmonary blood flow and left ventricular output and decreases SVC flow, which correlates with decreased  $crSO_2$ .<sup>9,31</sup> Interestingly, red blood cell transfusion can potentially decrease the frequency of  $crSO_2$  depressions in infants who had low initial NIRS values before transfusion was given, otherwise relative polycythemia (high hematocrit leading to higher blood viscosity) can reduce CBF and thus be potentially harmful.<sup>10,17</sup> On the contrary, blood sampling from an umbilical arterial catheter was shown to reduce cerebral blood volume and  $crSO_2$  in very low birth weight infants (the greater the amount of withdrawn blood, the more significant reduction).<sup>32</sup>

#### Intervention trials

Although the number of experimental and observational NIRS studies prevails, several interventional studies have been conducted or are underway. The COSGOD (cerebral oxygenation to guide supplemental oxygen) trial showed that the burden of cerebral hypoxia during the first 15 min of life can be reduced if NIRS-monitored  $crSO_2$  is added to the 'standard'  $SpO_2$  to guide respiratory and supplemental oxygen support.<sup>33</sup> Similarly, SafeBoosC-II trial reported reduced burden of cerebral hypoxia in extremely preterm infants during the first 3 postnatal days if cerebral oxygenation monitoring was implemented and guidelines for interventions based on  $crSO_2$  were provided.<sup>34</sup> Other trials (TOHOP (treatment of hypotension of prematurity), AHIP (avoiding hypotension in preterm neonates)) are still ongoing and they will try to investigate the MABP- $crSO_2$  association and the ability of preterm neonates to maintain cerebral autoregulation during hypotension or to find out the importance of  $crSO_2$  monitoring in relation to minimizing the frequency of hypotensive events and the usage of inotropes. The HIP (management of hypotension in preterm infants) trial investigates coherence between  $crSO_2$  (INVOS 5100 NIRS device) and MABP in hypotensive infants < 28 weeks gestation treated with either placebo or dopamine.<sup>35</sup>

#### Routine NIRS monitoring

Despite numerous neonatal studies, NIRS has not been implemented into the standard postnatal monitoring.  $SpO_2$ , MABP, heart rate and Hb are preferred variables, although they do not provide detailed picture of adequate end-organ/tissue perfusion and alert us only indirectly to discrepancy in the oxygen supply (regional blood flow and volume) and oxygen consumption (metabolic rate).<sup>2,8,10</sup> These variables (particularly  $SpO_2$  and heart rate measured by pulse oximetry) are used during neonatal resuscitation and often we depend on them to avoid hypoxia or

hyperoxia, although they are less than ideal under certain circumstances. On the contrary, NIRS-measured  $crSO_2$  does not have some restrictions pulse oximetry possesses (for example, dependency on blood flow pulsations).<sup>22</sup> Therefore, NIRS monitoring during neonatal transition for adjusting therapy in well-indicated intensive care patients could prevent later development of cerebral complications.<sup>2</sup>

### DETECTION OF BRAIN INJURY USING NIRS

#### Cerebral autoregulation

As mentioned above, significant neurological morbidities (PIVH/PVL) in preterm infants can strongly correlate with their later neurodevelopmental outcome and monitoring cerebral oxygen saturation can help us identify infants most vulnerable to severe brain injury.<sup>3,5,11,21,36</sup> Cerebral autoregulation (CAR) concept (CBF-MABP relationship with constant CBF for blood pressure changes within a certain range) represents one of the key aspects of cerebral hemodynamics in a preterm newborn.<sup>1,5,18,37</sup> CAR can be dysfunctional or completely absent (a decrease in MABP causes a decrease in CBF) in critically ill preterm infants and may be associated with increased mortality and brain injury through various pathophysiological mechanisms—hypoperfusion with hypoxic-ischemic injury,<sup>3,6,8–10,37</sup> cerebral perfusion fluctuation,<sup>5,6,8,12,37</sup> hyperperfusion<sup>1,5,36,37</sup> (causing hyperoxia<sup>8</sup> and peroxidation<sup>8,10</sup>) or reperfusion injury.<sup>4,9</sup> Particularly oxidative stress is strongly associated with white matter injury as oligodendrocytes (axon myelination) exhibit unique vulnerability to oxygen reactive species.<sup>31</sup> On the contrary, many preterm infants on intensive care units are able to maintain adequate cerebral perfusion at MABP in the range 23 to 40 mm Hg<sup>38</sup> or borderline MABP.<sup>19</sup> Analogously, borderline MABP does not correlate with lower  $crSO_2$  or with worse neurodevelopmental outcome.<sup>39</sup> Furthermore, the association between hypocapnia (that can negatively alter the CBF) and PVL developed later on is well recognized.<sup>40</sup> Being an indicator of cerebral perfusion, NIRS-measured  $crSO_2$  changes (and cFTOE or tissue oxygenation index) have been repeatedly studied in relation to the development of severe forms of PIVH/PVL.

#### NIRS and PIVH

Alderliesten *et al.*<sup>5</sup> observed higher  $crSO_2$  (and lower cFTOE) values prior to the development of severe PIVH, suggesting cerebral hyperperfusion. Others found similar findings and elevated CBF (higher  $crSO_2$ ) was observed also during and after the injury process, indicating prolonged hyperoxygenation status in infants with PIVH.<sup>3</sup> Hypercapnia (present especially during reperfusion phase) was also detected more often in the affected newborns, a finding known to be associated with an increased risk of PIVH.<sup>4,9</sup> Because  $PCO_2$  is a potent CBF regulator, increasing severity of hypercapnia is associated with progressive CBF increase and ultimately attenuation of CBF autoregulation.<sup>2,4,9</sup>

However, many studies observed decreased  $crSO_2$  during transition period<sup>2,5</sup> in newborns who later developed PIVH. Correspondingly, increased cFTOE in VLBW newborns can identify those at increased risk for significant sonographic brain injury (PIVH II–III and/or intraparenchymal lesions) or death.<sup>3,41</sup> Intriguingly, lower  $crSO_2$  values occurred irrespective of the grade of PIVH.<sup>42</sup> Additionally, Cerbo *et al.*<sup>6</sup> found correlation between time spent with  $crSO_2 \leq 40\%$  and brain injury or early mortality.

Intrauterine inflammation is often associated with increased risk of PIVH in preterm infants and increased cerebral metabolic load (increased cFTOE) imposed by chorioamnionitis could explain the subsequent hypoxic-ischemic brain injury.<sup>42</sup> Low CBF in the first postnatal day was found to be associated with PIVH even after gradual increase in CBF during the second or third postnatal days.<sup>3,4</sup> The reason could be that PIVH patients have lower stroke



**Table 1.** Overview of the recent studies concerning NIRS application in neonatal population

Leading author	Journal	NIRS device	Number of patients	GA/BW	Measured parameters	Duration of NIRS measurement	Conclusions
Alderliesten	Journal of Pediatrics 2013	INVOS 5100	30	≤ 32	crSO <sub>2</sub> , cFTOE, MABP, MABP-rSO <sub>2</sub> correlation	First 72 h	crSO <sub>2</sub> and cFTOE suggest cerebral hyperperfusion in infants with severe PIVH MABP-rSO <sub>2</sub> correlation indicates more blood pressure-passive brain perfusion in infants with PIVH MABP less than GA (in weeks) was not associated with lower crSO <sub>2</sub> or with lower neurodevelopmental outcome scores Regardless of MABP, low crSO <sub>2</sub> was associated with worse neurodevelopmental outcome. IVH group showed significantly lower crSO <sub>2</sub> values during the immediate transition. There was no difference concerning SpO <sub>2</sub> and HR between IVH and non-IVH group of infants. The reference ranges and centile charts of cTOI measured with the NIRO 200NX and cFTOE calculated out of cTOI and SpO <sub>2</sub> in neonates during the immediate neonatal transition (uncomplicated term infants). Elevated cFTOE values are associated with increased risk of early poor outcome in very preterm infants (PIVH II-IV, death). Mild short-term hypotensive episodes in preterm infants did not affect crSO <sub>2</sub> Cerebral autoregulation is maintained in case of borderline hypotension and may protect infants from cerebral injury (mostly non-invasive MABP measurements in the study). crSO <sub>2</sub> is influenced by cardiac function, in addition to oxygen consumption, arterial oxygen saturation and vascular resistance, and this can be measured by NT-proBNP. crSO <sub>2</sub> ≤ 40% and SVC flow < 40 ml kg <sup>-1</sup> min <sup>-1</sup> independently increase the risk of death. The trend in cFTOE supports the ischemic-hypoperfusion hypothesis as a mechanism for cerebral damage. Growth restriction and gender influence cerebral oxygenation and oxygen extraction in preterm neonates throughout the first 3 days of life. Significant deviation below optimal MABP was observed in infants who died Deviation of MABP above optimal level was observed in infants who developed more severe IVH. Ductal diameter is the only echocardiographic parameter significantly related to cerebral oxygenation over time. Low cerebral oxygenation may be suggestive of a hspDA. Dopamine therapy was associated with decreased cerebral autoregulation in preterm infants. We were unable to determine whether dopamine directly impaired cerebral autoregulation or was merely an indicator of illness. Cerebral tissue oxygen saturation monitoring is feasible during neonatal resuscitation of VLBW infants within the first minutes of life. Increasing crSO <sub>2</sub> in resuscitated infants in the first 10 min of life.
Alderliesten	Journal of Pediatrics 2014	INVOS 5100	66	≤ 32	crSO <sub>2</sub> , SpO <sub>2</sub> , cFTOE, MABP, BSID III	First 72 h	
Baik	ADC-FNE 2015	INVOS 5100	24	< 32	crSO <sub>2</sub> , HR, SpO <sub>2</sub>	First 15 min	
Baik	Neonatology 2015	NIRO 200NX	140	Term (mean 39)	TOI, cFTOE, SpO <sub>2</sub> , HR	First 15 min	
Balegar	Journal of Pediatrics 2014	NIRO 200	71	≤ 30	TOI, SpO <sub>2</sub>	First 72 h	
Binder-Heschl	JMFNM 2016	INVOS 5100	46	< 37 (mean 33)	crSO <sub>2</sub> , SpO <sub>2</sub> , cFTOE, MABP	24 h (started within 6 h after birth)	
Binder-Heschl	Acta Paediatrica 2015	INVOS 5100	35	< 37 (mean 33)	crSO <sub>2</sub> , SpO <sub>2</sub> , cFTOE, pro-BNP	24 h (started within 6 h after birth)	
Cerbo	Neonatology 2015	INVOS 5100	60	< 30	crSO <sub>2</sub> , cFTOE, SVC flow	First 48 h	
Cohen	ADC-FNE 2016	INVOS 5100	204	Median 30	crSO <sub>2</sub> , SpO <sub>2</sub> , cFTOE	First 72 h	
Costa	Journal of Pediatrics 2015	NIRO 200NX	60	≤ 32 (median 26)	TOI, SpO <sub>2</sub> , HR, MABP	Measured in range of 5–228 h	
Dix	ADC-FNE 2016	INVOS 5100	380	< 32	crSO <sub>2</sub> , PDA	First 72 h+1 h before ECHO (days 2, 4, 6)	
Erikssen	Acta Paediatrica 2014	NIRO 300	60	≤ 32	crSO <sub>2</sub> , MABP	2–3 h crSO <sub>2</sub> measurement in the first 24 h	
Fuchs	Journal of Perinatology 2012	Foresight	51	< 1500 g	crSO <sub>2</sub> , SpO <sub>2</sub> , cFTOE, HR	First 10 min	
Kooi	Neonatology 2013	INVOS 5100	14	< 30	crSO <sub>2</sub> , SpO <sub>2</sub> , cFTOE, MABP	crSO <sub>2</sub> before and after volume administration	
Laan	Neonatology 2016	INVOS 5100	49	< 32	crSO <sub>2</sub> , SpO <sub>2</sub> , cFTOE, PDA parameters	1 h crSO <sub>2</sub> before/after ECHO	

**Table 1.** (Continued)

Leading author	Journal	NIRS device	Number of patients	GA/BW	Measured parameters	Duration of NIRS measurement	Conclusions
Mintzer	Journal of Pediatrics 2015	INVOS 5100	15	< 1250 g	crSO <sub>2</sub>	First 10 days	UA blood sampling is associated with significant crSO <sub>2</sub> decrements with increased variability over clinically significant intervals.
Noori	Journal of Pediatrics 2014	INVOS 5100	22	< 28	crSO <sub>2</sub> , cFTOE, cardiac function	4–76 h	Cardiac function and CBF remain stable in very preterm neonates who do not develop PIVH during the first 3 postnatal days—infants who develop PIVH have lower systemic perfusion and CBF followed by an increase in these variables preceding the development of PIVH.
Pichler	Journal of Pediatrics 2016	INVOS 5100	60	< 34	crSO <sub>2</sub> , SpO <sub>2</sub> , HR	First 15 min	Reduction of burden of cerebral hypoxia during immediate transition and resuscitation after birth is feasible by crSO <sub>2</sub> monitoring to guide respiratory and supplemental oxygen support (COSGOD trial).
Pichler	Journal of Pediatrics 2013	INVOS 5100	381	35–39	crSO <sub>2</sub> , SpO <sub>2</sub> , cFTOE, HR	First 15 min	The reference ranges of crSO <sub>2</sub> and cFTOE in neonates requiring no medical support during transition immediately after birth (only 27 preterm infants included).
Pichler	JMFNM 2016	INVOS 5100	76	Mean 32	crSO <sub>2</sub> , SpO <sub>2</sub> , cFTOE	First 15 min	Delayed cord clamping (60 s) was associated with lower initial crSO <sub>2</sub> and higher cFTOE and lower initial Apgar-score and heart rate compared with early cord clamping (< 30 s).
Schmid	Neonatology 2015	Foresight	16	≤ 30 (mean 26)	crSO <sub>2</sub> , SpO <sub>2</sub> , HR	16 h (measured in range of 7–58 days)	Isolated bradycardia had the lowest impact on cerebral desaturation and combined events had the highest. Most infants preserved cerebral oxygenation > 60% during events.
Stark	ADC-FNE 2016	NIRO 200	83	≤ 30	crSO <sub>2</sub> , total internal carotid blood flow	30 min crSO <sub>2</sub> measurement (days 1 and 3)	The increased cerebral metabolic load imposed by the presence of inflammation results in a higher risk of critical hypoxic ischemia in the preterm with increased susceptibility to significant PIVH.
Verhagen	Clinical Neurophysiology 2014	INVOS 5100	25	< 32	crSO <sub>2</sub> , SpO <sub>2</sub> , cFTOE, MABP	24 h (in the first 72 h of life)	A statistically significant negative correlation between MABP and FTOE using NIRS, suggesting the absence of cerebral autoregulation in almost half of the preterm infants studied.
Verhagen	DMCN 2015	INVOS 5100	67	< 32	crSO <sub>2</sub> , SpO <sub>2</sub> , cFTOE, BSID III	2 h on days 1–5, 8 and 15	Cerebral oxygen saturation during the first 2 weeks after birth is associated with neurodevelopmental outcome of preterm infants at 2–3 years.
Waitz	Journal of Pediatrics 2015	Foresight	15	≤ 28 (mean 25)	crSO <sub>2</sub> , SpO <sub>2</sub>	24 h (measured in range of 19–74 days)	High and low crSO <sub>2</sub> on day 1 were associated with poorer neurodevelopmental outcome. Automated FIO <sub>2</sub> control in preterm infants with frequent SpO <sub>2</sub> fluctuations significantly increased the time within the SpO <sub>2</sub> target range and reduced the incidence of prolonged hypoxemic events compared with manual FIO <sub>2</sub> adjustment but did not significantly affect cerebral tissue oxygenation.

Abbreviations: ADC-FNE, Archives of Disease in Childhood – Fetal and Neonatal Edition; BSID III, Bayley Scales of Infant Development, Third edition; BW, birth weight; CAR, cerebrovascular autoregulation; CBF, cerebral blood flow; cFTOE, cerebral fractional tissue oxygen extraction; COSGOD, cerebral oxygenation to guide supplemental oxygen; crSO<sub>2</sub>, cerebral hemoglobin oxygen saturation; cTOI, cerebral tissue oxygenation index; DMCN, Developmental Medicine and Child Neurology; ECHO, echocardiographic evaluation; GA, gestational age; HR, heart rate; hsPDA, hemodynamically significant patent ductus arteriosus; IVH, intraventricular hemorrhage; JMFNM, Journal of Maternal-Fetal and Neonatal Medicine; MABP, mean arterial blood pressure; NIRS, near-infrared spectroscopy; NT-proBNP, N-terminal pro-brain natriuretic peptide; PIVH, peri-intraventricular hemorrhage; SpO<sub>2</sub>, arterial oxygenation; SVC, superior vena cava; TOI, tissue oxygenation index; UA, umbilical arterial; VLBW, very low birth weight.

volume and left ventricular output initially. These parameters gradually normalize (improving myocardial performance) just before the PIVH occurs, suggesting hypoperfusion–reperfusion brain injury.<sup>4,9</sup> These observations support the finding that both high and low  $crSO_2$  (during the first postnatal day) can be associated with adverse neurodevelopmental outcome of preterm infants at 2–3 years of age. The researchers also concluded that over the first 2 weeks of life, low  $crSO_2$  for prolonged periods of time was associated with poorer cognitive outcomes.<sup>36</sup>

It is noteworthy that PIVH infants in many aforementioned studies experienced more intensive treatment (inotropes, pharmacological duct closure, mechanical ventilation), which in combination with observed blood pressure-passive cerebral perfusion can cause fluctuations in CBF and we have to factor in also the direct effect of treatment modalities on cerebral perfusion.<sup>3,5,9,42</sup>

#### NIRS and systemic circulation

Despite obvious interlink between dysfunctional cerebral hemodynamics and adverse neurological outcome in preterm infants, certain studies imply circulatory disturbances to be at the beginning of the whole process.<sup>4,9,16</sup> It seems that rather both systems are involved in determining the adverse outcome of patients (brain injury/death). For example, Cerbo *et al.*<sup>6</sup> reported that  $crSO_2 \leq 40\%$  (representing CBF) and SVC flow  $< 40 \text{ ml kg}^{-1} \text{ min}^{-1}$  (representing systemic blood flow) independently increase mortality in preterm infants  $< 30$  weeks gestation. Equally,  $crSO_2$  correlated well with SVC flow and left ventricular cardiac output in preterm infants in the first days of life.<sup>22</sup> These findings can be explained by initial myocardial dysfunction that can contribute to decreased cardiac output and this is then translated into relatively low cerebral perfusion (particularly if CAR is impaired). Over time, myocardium recovers (several hours to days), and as the left ventricular stroke volume and cardiac output improve, cerebral hypoperfusion–reperfusion injury can occur.<sup>4,16,17</sup> A contributing factor is the relative sensitivity of certain newborns to a sudden increase in afterload after delivery (removal of low-pressure placental circulation).<sup>9,16</sup> To alleviate the negative impact of these transitions, preterm newborns may benefit from interventions that increase preload, thus stabilizing cardiac function.<sup>9,43</sup> This can be one of the reasons passive or active placental transfusion are associated with a lower incidence of PIVH/PVL.<sup>43,44</sup> However, a recent study found that delayed cord clamping was linked to lower  $crSO_2$  values during the immediate postnatal transition.<sup>45</sup> Also, diastolic dysfunction (although gradually improving in VLBW infants in the first postnatal days) can reduce initial cardiac preload.<sup>9,46</sup> Unfortunately, active interventions to improve low systemic blood flow or diastolic function in the early postnatal period did not bring the desired outcomes.<sup>47</sup>

Expectedly, myocardial dysfunction probably cannot account for all aspects of hemodynamic disturbance and subsequent brain injury. Patent ductus arteriosus (PDA) has been frequently associated with most neonatal morbidities, including PIVH/PVL.<sup>48</sup> One of the possible explanations is that the gradual increase in left ventricular output could be downregulated by significant left-to-right shunting, thus reducing CBF (preterm infants with low SVC flow have a larger PDA than those with normal SVC flow during the first 12 h after birth but not afterward).<sup>9,17</sup> The presence of PIVH itself can theoretically induce an inflammatory response that keeps the duct open (sepsis-like event).<sup>5</sup> Although hemodynamic status of PDA depends mostly on definition and clinical picture, ductal diameter has been shown to possess the strongest association with cerebral oxygenation (low  $crSO_2$  can indicate significant PDA).<sup>49</sup> Indeed, the cardiac marker N-terminal pro-brain natriuretic peptide (NT-proBNP) was observed to increase as the diameter of the ductus arteriosus increases and some authors demonstrated an inverse relationship between NT-proBNP and

$crSO_2$ .<sup>16</sup> Other authors demonstrated that even a clinically significant PDA does not affect  $crSO_2$  (and cFTOE)<sup>50</sup> while Lemmers *et al.*<sup>51</sup> observed decreased  $crSO_2$  in infants with hemodynamically significant PDA. These controversial conclusions probably result from varied methodology of presented studies (including heterogeneous group of infants) and possible influence of concomitant pharmacological interventions ('sick' infants tend to be more hypotensive and are treated more aggressively for PDA).<sup>50–52</sup> Regarding interventions, dopamine was suggested to cause direct cerebral vasoconstriction (alpha receptors) in some preterm infants, which can thwart CAR even further on the background of systemic hypotension that initiated inotrope administration.<sup>52</sup> Furthermore, volume therapy led to a statistically significant, but clinically irrelevant, rise in MABP without a concomitant change in cFTOE.<sup>53</sup> Table 1 summarizes the aforementioned NIRS studies conducted in the recent years (Table 1).

#### POTENTIAL SIDE EFFECTS OF NIRS

Unfortunately, cerebral oximetry has potential disadvantages that may be responsible for reduced use in routine clinical settings. From the point of view of patients' safety, sensors emanating near-infrared spectrum may cause thermic or pressure injury.<sup>8,10</sup> However, others observed that NIRS did not cause skin burns even if applied for a longer time periods.<sup>11</sup> Certain protective measures (gauze strips) can reduce occurrence of such injuries and this technique was confirmed by NIRS device producers as having no negative impact on NIRS signal.<sup>32</sup> Perhaps most importantly, cerebral oxygenation value can be difficult to grasp and manipulate in terms of routine bed-side clinical usage.<sup>1,8,10,12</sup> Coupled with wide-ranging 'normal'  $crSO_2$  values (when compared with  $SpO_2$ , for example), NIRS makes decisions based on single values rather difficult.<sup>8–12,20,22</sup> The observed variability stems from different NIRS machines using different algorithms and probes, which were used in the studies with various methodologies and diverse neonatal populations. However, even  $crSO_2$  variability using the same probe with the same machine (suboptimal reproducibility) appears to be significant.<sup>1,8,12</sup> Besides the technical issues, it is well known that the venous saturation varies between patients as shown in measurements of the jugular venous saturation. We are used to interpret arterial saturations, which represent rather small interindividual changes, but venous saturation changes are much wider. One would need to tackle not only interpatient but also intrapatient variability, when a slight shift in sensor placement can give different readings on the same patient.<sup>11,12</sup> Last but not least, the cost of NIRS machines is significant and one has to bear in mind the cost of the single-use probes as well.<sup>10</sup>

#### CONCLUSION

Neurological morbidities determining the neurodevelopmental outcome are significantly associated with systemic and regional hemodynamic disturbances in preterm infants. NIRS evaluates cerebral oxygenation offering a more complete picture of end-organ perfusion. Furthermore, it could help us fully understand the pathophysiology of severe neurological morbidities and possibly guide our management in order to reduce their incidence and/or severity. In this regard, NIRS seems to be reasonable in newborns with significant risks for neurological injury—extreme prematurity, chorioamnionitis, severe respiratory distress syndrome or circulatory disturbances. Owing to past research and intervention trials, NIRS application in high-risk preterm infants seems to have better utility than ever before. Unfortunately, these infants also display the greatest vulnerability to potentially harmful side effects. Therefore, we should try to increase measurement precision (newer algorithms, sensor placement), reduce harmfulness (selective patient measurement) and establish

reference values in the most preterm infants to fully implement routine NIRS monitoring.

## CONFLICT OF INTEREST

The authors declare no conflict of interest.

## ACKNOWLEDGEMENTS

The work was supported by EU FP7/2007–2013 under grant agreement no. 260777 (The HIP Trial).

## AUTHOR CONTRIBUTIONS

PK, ZS and JS: substantial contributions to design, acquisition, analysis, and interpretation of the data. GN: drafted and reviewed the article for important intellectual content.

## REFERENCES

- Liem KD, Greisen G. Monitoring of cerebral haemodynamics in newborn infants. *Early Hum Dev* 2010; **86**: 155–158.
- Baik N, Urlesberger B, Schwaberg B, Schmölzer GM, Avian A, Pichler G. Cerebral haemorrhage in preterm neonates: does cerebral regional oxygen saturation during the immediate transition matter? *Arch Dis Child Fetal Neonatal Ed* 2015; **100**: 422–427.
- Balegar KK, Stark MJ, Briggs N, Andersen CC. Early cerebral oxygen extraction and the risk of death or sonographic brain injury in very preterm infants. *J Pediatr* 2014; **164**: 475–480.
- Noori S, McCoy M, Anderson MP, Ramji F, Seri I. Changes in cardiac function and cerebral blood flow in relation to peri/intraventricular hemorrhage in extremely preterm infants. *J Pediatr* 2014; **164**: 264–270.
- Alderliesten T, Lemmers PM, Smarius JJ, van de Vosse RE, Baerts W, van Bel F. Cerebral oxygenation, extraction, and autoregulation in very preterm infants who develop peri-intraventricular hemorrhage. *J Pediatr* 2013; **162**: 698–704.
- Cerbo RM, Scudeller L, Maragliano R, Cabano R, Pozzi M, Tinelli C *et al*. Cerebral oxygenation, superior vena cava flow, severe intraventricular hemorrhage and mortality in 60 very low birth weight infants. *Neonatology* 2015; **108**: 246–252.
- Mukerji A, Shah V, Shah PS. Periventricular/intraventricular hemorrhage and neurodevelopmental outcomes: a meta-analysis. *Pediatrics* 2015; **136**: 1132–1143.
- Greisen G, Andresen B, Plomgaard AM, Hyttel-Sørensen S. Cerebral oximetry in preterm infants: an agenda for research with a clear clinical goal. *Neurophotonics* 2016; **3**: 031407.
- Noori S, Seri I. Hemodynamic antecedents of peri/intraventricular hemorrhage in very preterm neonates. *Semin Fetal Neonatal Med* 2015; **20**: 232–237.
- Kenosi M, Naulaers G, Ryan CA, Dempsey EM. Current research suggests that the future looks brighter for cerebral oxygenation monitoring in preterm infants. *Acta Paediatr* 2015; **104**: 225–231.
- Sood BG, McLaughlin K, Cortez J. Near-infrared spectroscopy: applications in neonates. *Semin Fetal Neonatal Med* 2015; **20**: 164–172.
- da Costa CS, Greisen G, Austin T. Is near-infrared spectroscopy clinically useful in the preterm infant? *Arch Dis Child Fetal Neonatal Ed* 2015; **100**: 558–561.
- El-Khuffash A, Herbozo C, Jain A, Lapointe A, McNamara PJ. Targeted neonatal echocardiography (TnECHO) service in a Canadian neonatal intensive care unit: a 4-year experience. *J Perinatol* 2013; **33**: 687–690.
- Jöbsis FF. Noninvasive, infrared monitoring of cerebral and myocardial oxygen sufficiency and circulatory parameters. *Science* 1977; **198**: 1264–1267.
- Brazy JE, Lewis DV. Changes in cerebral blood volume and cytochrome aa3 during hypertensive peaks in preterm infants. *J Pediatr* 1986; **108**: 983–987.
- Binder-Heschl C, Urlesberger B, Koestenberger M, Schwaberg B, Schmölzer GM, Pichler G. Cerebral tissue oxygen saturation is associated with N-terminal probrain natriuretic peptide in preterm infants on their first day of life. *Acta Paediatr* 2015; **104**: 32–37.
- Cohen E, Baerts W, Alderliesten T, Derks J, Lemmers P, van Bel F. Growth restriction and gender influence cerebral oxygenation in preterm neonates. *Arch Dis Child Fetal Neonatal Ed* 2016; **101**: 156–161.
- Verhagen EA, Hummel LA, Bos AF, Kooi EM. Near-infrared spectroscopy to detect absence of cerebrovascular autoregulation in preterm infants. *Clin Neurophysiol* 2014; **125**: 147–152.
- Binder-Heschl C, Urlesberger B, Schwaberg B, Koestenberger M, Pichler G. Borderline hypotension: how does it influence cerebral regional tissue oxygenation in preterm infants? *J Matern Fetal Neonatal Med* 2016; **29**: 2341–2346.
- Baik N, Urlesberger B, Schwaberg B, Schmölzer GM, Mileder L, Avian A *et al*. Reference ranges for cerebral tissue oxygen saturation index in term neonates during immediate neonatal transition after birth. *Neonatology* 2015; **108**: 283–286.
- Pichler G, Binder C, Avian A, Beckenbach E, Schmölzer GM, Urlesberger B. Reference ranges for regional cerebral tissue oxygen saturation and fractional oxygen extraction in neonates during immediate transition after birth. *J Pediatr* 2013; **163**: 1558–1563.
- Fuchs H, Lindner W, Buschko A, Almazam M, Hummler HD, Schmid MB. Brain oxygenation monitoring during neonatal resuscitation of very low birth weight infants. *J Perinatol* 2012; **32**: 356–362.
- Alderliesten T, Dix L, Baerts W, Caicedo A, van Huffel S, Naulaers G *et al*. Reference values of regional cerebral oxygen saturation during the first 3 days of life in preterm neonates. *Pediatr Res* 2016; **79**: 55–64.
- Shah AR, Kurth CD, Gwiazdowski SG, Chance B, Delivoria-Papadopoulos M. Fluctuations in cerebral oxygenation and blood volume during endotracheal suctioning in premature infants. *J Pediatr* 1992; **120**: 769–774.
- Mosca FA, Colnaghi M, Lattanzio M, Bray M, Pugliese S, Fumagalli M. Closed versus open endotracheal suctioning in preterm infants: effects on cerebral oxygenation and blood volume. *Biol Neonate* 1997; **72**: 9–14.
- Dani C, Bertini G, Reali MF, Tronchin M, Wiechmann L, Martelli E *et al*. Brain hemodynamic changes in preterm infants after maintenance dose caffeine and aminophylline treatment. *Biol Neonate* 2000; **78**: 27–32.
- Tracy MB, Klimek J, Hinder M, Ponnampalam G, Tracy SK. Does caffeine impair cerebral oxygenation and blood flow velocity in preterm infants? *Acta Paediatr* 2010; **99**: 1319–1323.
- Waitz M, Schmid MB, Fuchs H, Mandler MR, Dreyhaupt J, Hummler HD. Effects of automated adjustment of the inspired oxygen on fluctuations of arterial and regional cerebral tissue oxygenation in preterm infants with frequent desaturations. *J Pediatr* 2015; **166**: 240–244.
- Schmid MB, Hopfner RJ, Lenhof S, Hummler HD, Fuchs H. Cerebral oxygenation during intermittent hypoxemia and bradycardia in preterm infants. *Neonatology* 2015; **107**: 137–146.
- Naulaers G, Delanghe G, Allegaert K, Debeer A, Cossey V, Vanhole C *et al*. Ibuprofen and cerebral oxygenation and circulation. *Arch Dis Child Fetal Neonatal Ed* 2005; **90**: 75–76.
- Polglase GR, Miller SL, Barton SK, Baburamani AA, Wong FY, Aridas JD *et al*. Initiation of resuscitation with high tidal volumes causes cerebral hemodynamic disturbance, brain inflammation and injury in preterm lambs. *PLoS ONE* 2012; **7**: e39535.
- Mintzer JP, Parvez B, La Gamma EF. Umbilical arterial blood sampling alters cerebral tissue oxygenation in very low birth weight neonates. *J Pediatr* 2015; **167**: 1013–1017.
- Pichler G, Urlesberger B, Baik N, Schwaberg B, Binder-Heschl C, Avian A *et al*. Cerebral oxygen saturation to guide oxygen delivery in preterm neonates for the immediate transition after birth: a 2-center randomized controlled pilot feasibility trial. *J Pediatr* 2016; **170**: 73–78.
- Plomgaard AM, van Oeveren W, Petersen TH, Alderliesten T, Austin T, van Bel F *et al*. The SafeBoosC II randomized trial: treatment guided by near-infrared spectroscopy reduces cerebral hypoxia without changing early biomarkers of brain injury. *Pediatr Res* 2016; **79**: 528–535.
- Dempsey EM, Barrington KJ, Marlow N, O'Donnell CP, Miletin J, Naulaers G *et al*. Management of hypotension in preterm infants (The HIP Trial): a randomised controlled trial of hypotension management in extremely low gestational age newborns. *Neonatology* 2014; **105**: 275–281.
- Verhagen EA, Van Braeckel KN, van der Veere CN, Groen H, Dijk PH, Hulzebos CV *et al*. Cerebral oxygenation is associated with neurodevelopmental outcome of preterm children at age 2 to 3 years. *Dev Med Child Neurol* 2015; **57**: 449–455.
- da Costa CS, Czosnyka M, Smielewski P, Mitra S, Stevenson GN, Austin T. Monitoring of cerebrovascular reactivity for determination of optimal blood pressure in preterm infants. *J Pediatr* 2015; **167**: 86–91.
- Tyszczyk L, Meek J, Elwell C, Wyatt JS. Cerebral blood flow is independent of mean arterial blood pressure in preterm infants undergoing intensive care. *Pediatrics* 1998; **102**: 337–341.
- Alderliesten T, Lemmers PM, van Haastert IC, de Vries LS, Bonestroo HJ, Baerts W *et al*. Hypotension in preterm neonates: low blood pressure alone does not affect neurodevelopmental outcome. *J Pediatr* 2014; **164**: 986–991.
- Okumura A, Hayakawa F, Kato T, Itomi K, Maruyama K, Ishihara N *et al*. Hypocarbica in preterm infants with periventricular leukomalacia: the relation between hypocarbica and mechanical ventilation. *Pediatrics* 2001; **107**: 469–475.
- Verhagen EA, Ter Horst HJ, Keating P, Martijn A, Van Braeckel KN, Bos AF. Cerebral oxygenation in preterm infants with germinal matrix-intraventricular hemorrhages. *Stroke* 2010; **41**: 2901–2907.



- 42 Stark MJ, Hodyl NA, Belegar VKK, Andersen CC. Intrauterine inflammation, cerebral oxygen consumption and susceptibility to early brain injury in very preterm newborns. *Arch Dis Child Fetal Neonatal Ed* 2016; **101**: 137–142.
- 43 Katheria A, Rich W, Finer N. Optimizing care of the preterm infant starting in the delivery room. *Am J Perinatol* 2016; **33**: 297–304.
- 44 Backes CH, Rivera BK, Haque U, Bridge JA, Smith CV, Hutcheon DJ *et al*. Placental transfusion strategies in very preterm neonates: a systematic review and meta-analysis. *Obstet Gynecol* 2014; **124**: 47–56.
- 45 Pichler G, Baik N, Urlesberger B, Cheung PY, Aziz K, Avian A *et al*. Cord clamping time in spontaneously breathing preterm neonates in the first minutes after birth: impact on cerebral oxygenation - a prospective observational study. *J Matern Fetal Neonatal Med* 2016; **29**: 1570–1572.
- 46 Sirc J, Dempsey EM, Miletin J. Diastolic ventricular function improves during the first 48-hours-of-life in infants weighting < 1250g. *Acta Paediatr* 2015; **104**: 1–6.
- 47 Paradisis M, Evans N, Kluckow M, Osborn D. Randomized trial of milrinone versus placebo for prevention of low systemic blood flow in very preterm infants. *J Pediatr* 2009; **154**: 189–195.
- 48 El-Khuffash A, Weisz DE, McNamara PJ. Reflections of the changes in patent ductus arteriosus management during the last 10 years. *Arch Dis Child Fetal Neonatal Ed* 2016; **101**: 474–478.
- 49 Dix L, Molenschot M, Breur J, de Vries W, Vijlbrief D, Groenendaal F *et al*. Cerebral oxygenation and echocardiographic parameters in preterm neonates with a patent ductus arteriosus: an observational study. *Arch Dis Child Fetal Neonatal Ed* 2016 (e-pub ahead of print; doi:10.1136/archdischild-2015-309192).
- 50 van der Laan ME, Roofthoof MT, Fries MW, Berger RM, Schat TE, van Zoonen AG *et al*. A hemodynamically significant patent ductus arteriosus does not affect cerebral or renal tissue oxygenation in preterm infants. *Neonatology* 2016; **110**: 141–147.
- 51 Lemmers PM, Toet MC, van Bel F. Impact of patent ductus arteriosus and subsequent therapy with indomethacin on cerebral oxygenation in preterm infants. *Pediatrics* 2008; **121**: 142–147.
- 52 Eriksen VR, Hahn GH, Greisen G. Dopamine therapy is associated with impaired cerebral autoregulation in preterm infants. *Acta Paediatr* 2014; **103**: 1221–1226.
- 53 Kooi EM, van der Laan ME, Verhagen EA, Van Braeckel KN, Bos AF. Volume expansion does not alter cerebral tissue oxygen extraction in preterm infants with clinical signs of poor perfusion. *Neonatology* 2013; **103**: 308–314.



# Placental Transfusion and Cardiovascular Instability in the Preterm Infant

Zbyněk Straňák<sup>1,2</sup>, Simona Feyereislová<sup>1,2</sup>, Peter Korček<sup>1,2\*</sup> and Eugene Dempsey<sup>3,4</sup>

<sup>1</sup>Third Faculty of Medicine, Charles University, Prague, Czechia, <sup>2</sup>Institute for the Care of Mother and Child, Prague, Czechia, <sup>3</sup>Department of Paediatrics and Child Health, Neonatal Intensive Care Unit, University College Cork, Cork, Ireland, <sup>4</sup>INFANT Centre, University College Cork, Cork, Ireland

## OPEN ACCESS

### Edited by:

Po-Yin Cheung,  
University of Alberta, Canada

### Reviewed by:

Anup C. Katheria,  
Sharp Mary Birch Hospital for  
Women & Newborns, United States  
Pascal M. Lavoie,  
BC Children's Hospital Research  
Institute, Canada  
Karel Allegaert,  
University Hospitals Leuven, Belgium

### \*Correspondence:

Peter Korček  
peterkorcek.upmd@gmail.com

### Specialty section:

This article was submitted to  
Neonatology,  
a section of the journal  
Frontiers in Pediatrics

**Received:** 28 November 2017

**Accepted:** 09 February 2018

**Published:** 27 February 2018

### Citation:

Straňák Z, Feyereislová S, Korček P  
and Dempsey E (2018) Placental  
Transfusion and Cardiovascular  
Instability in the Preterm Infant.  
*Front. Pediatr.* 6:39.  
doi: 10.3389/fped.2018.00039

Postnatal adaptation in preterm newborn comprises complex physiological processes that involve significant changes in the circulatory and respiratory system. Increasing hemoglobin level and blood volume following placental transfusion may be of importance in enhancing arterial oxygen content, increasing cardiac output, and improving oxygen delivery. The European consensus on resuscitation of preterm infants recommends delayed cord clamping (DCC) for at least 60 s to promote placenta–fetal transfusion in uncompromised neonates. Recently, published meta-analyses suggest that DCC is associated with fewer infants requiring transfusions for anemia, a lower incidence of intraventricular hemorrhage, and lower risk for necrotizing enterocolitis. Umbilical cord milking (UCM) has the potential to avoid some disadvantages associated with DCC including the increased risk of hypothermia or delay in commencing manual ventilation. UCM represents an active form of blood transfer from placenta to neonate and may have some advantages over DCC. Moreover, both methods are associated with improvement in hemodynamic parameters and blood pressure within first hours after delivery compared to immediate cord clamping. Placental transfusion appears to be beneficial for the preterm uncompromised infant. Further studies are needed to evaluate simultaneous placental transfusion with resuscitation of deteriorating neonates. It would be of great interest for future research to investigate advantages of this approach further and to assess its impact on neonatal outcomes, particularly in extremely preterm infants.

**Keywords:** birth transition, placental transfusion, hypotension, neonatal outcome, very low birth weight

## INTRODUCTION

Neonatal adaptation is a complex physiological process that involves numerous adaptive changes within several organ systems. In order to achieve this, an almost immediate transition to air breathing with intricate pressure changes as well as changes of blood flow in circulatory system must occur simultaneously, especially enhanced pulmonary blood flow. Adequate blood volume is necessary to facilitate these adaptive processes and ensure sufficient oxygen transport and organ/tissue perfusion.

**Abbreviations:** BP, blood pressure; CI, confidence interval; DCC, delayed cord clamping; ELBW, extremely low birth weight; GA, gestational age; ICC, immediate cord clamping; IVH, intraventricular hemorrhage; LV, left ventricle; MABP, mean arterial blood pressure; MCA, middle cerebral artery; PDA, patent ductus arteriosus; SVC, superior vena cava; SVCF, superior vena cava flow; RR, risk ratio; RVO, right ventricular output; UCM, umbilical cord milking; VLBW, very low birth weight.

Increasing fetal hemoglobin (Hb) by placental transfusion may be considered a method in enhancing arterial oxygen content, increasing cardiac output, and improving oxygen delivery. It involves a shift of placental blood to the neonate within a limited amount of time immediately after delivery and may be achieved in two different ways: delayed cord clamping (DCC) and umbilical cord milking (UCM) (1–3).

These enhanced placental transfusion techniques can help to achieve a greater blood volume at birth (increase of up to 10–15 mL/kg), which may be significant especially in very low birth weight infants. Most of the blood volume (50–70%) is transferred within the first minute of life and can form up to 15% of overall blood volume of the neonate. Milking the cord four times provides a comparable amount of placental–fetal blood being transferred as performing DCC for at least 30 s (3, 4).

Recommendations with regards to the handling of umbilical cord have changed significantly over the last decades. The 2015 ILCOR and ERC guidelines advocate DCC (for at least 1 min) in uncompromised term and preterm infants. However, the authors advise that placental transfusion should be discontinued in infants who are not breathing, so that resuscitation measures are not delayed. The European consensus on resuscitation of the preterm infant recommends DCC (if possible) for at least 60 s to promote placental–fetal transfusion. Cord milking is considered a reasonable alternative if DCC is not possible (5–7).

The aim of this review is to present the recently published data with regards to different methods of placental transfusion, to compare and emphasize their impact in postnatal adaptation with particular emphasis on measures of cardiovascular stability in the first days of life in preterm infants.

## RATIONALE FOR PLACENTAL TRANSFUSION

In optimal circumstances, appropriate aeration of the lungs, as achieved by spontaneous breathing, leads to increased pulmonary blood flow with a consequent increase in preload of the left ventricle (LV) and hence increased cerebral blood flow (8–10). However, after removing low resistance placental circulation by immediate cord clamping (ICC), there is a sudden increase in systemic arterial resistance of the neonate, which leads to increased afterload of the LV, as well as decreased preload of the right side of the heart (8–10). Furthermore, immaturity of myocardium in preterm infants means that they are vulnerable to rapid hemodynamic changes that can cause fluctuations in organ/tissue perfusion (3). In particular, the central nervous system appears to be most vulnerable to such changes, as cerebral autoregulation in preterm infants can be often impaired or absent in the immediate transitional period (11, 12).

In cases where cord clamping precedes onset of spontaneous ventilation, decreasing ventricular preload and ventricular output could potentially result in a decrease in cerebral blood flow. Low and altered cerebral blood flow has been associated with intraventricular hemorrhage (IVH). Thus, maintaining cerebral blood flow is an important component in reducing the incidence of severe IVH (8–10). In this respect, a published study using

Near InfraRed Spectroscopy as well as several meta-analyses on this topic have shown that an adequate placental transfusion by DCC or UCM may increase cerebral blood flow during postnatal adaptation of the newborn and may help reduce IVH occurrence (10).

In addition, apart from lower rates of IVH, other benefits of enhanced placental transfusion in preterm neonates and newborns with extremely low birth weight have already been reported: higher Hb levels, reduced number of needed blood transfusions, lower risk for necrotizing enterocolitis, and higher mean blood pressure (BP) after birth (13, 14). Data relating to short-term hemodynamic variables are discussed in greater detail below.

## PLACENTAL TRANSFUSION: HEMODYNAMIC EFFECTS

A number of studies highlight the potential cardiovascular benefits of placental transfusion in preterm infants. These include effects on mean BP, administration of volume and inotropes and other objective hemodynamic assessment methods [e.g., superior vena cava (SVC) blood flow, right ventricle output]. The studies are outlined in **Table 1** and discussed in greater detail below (10, 12–21). We have grouped the studies as placental transfusion (either DCC or UCM) compared to ICC and then a comparison of alternative placental transfusion strategies, focusing primarily on markers of cardiovascular stability.

## COMPARISON 1: DCC COMPARED TO ICC

A previous meta-analysis of 15 studies examined 738 infants born before 37 weeks of gestation, having either DCC or UCM compared to ICC and found no significant differences in a number of outcome variables including Apgar scores, extent of resuscitation, incidence of hypothermia, polycythemia, and various pulmonary outcomes (ventilatory support, oxygen dependence). However, the following benefits were noted: DCC was associated with fewer infants requiring blood transfusions [risk ratio (RR) 0.61, 95% confidence interval (CI) 0.46–0.81], less IVH (ultrasound diagnosis of all grades: RR 0.59, 95% CI = 0.41–0.85), lower risk for necrotizing enterocolitis (RR 0.62, 95% CI = 0.43–0.90), and a lesser need for inotropic support (RR 0.42, 95% CI = 0.23–0.77) (22). However, there were only four studies reporting incidence and treatment of hypotension. The mean arterial blood pressure (MABP) was significantly higher in those allocated to DCC. Two studies (13, 23) present data at birth (97 infants, MD 3.52, 95% CI 0.60–6.45) and two other studies (10, 24) at age 4 h (111 infants, MD 2.49, 95% CI 0.26–4.72).

A number of more recent studies comparing DCC with ICC have reported BP data. Backes et al. found that infants who received DCC, as compared to those with ICC, had a higher BP within the first 24 h of life (mean difference of 4.13 mmHg, 95% CI 2.0 to 6.2,  $P < 0.01$ ) and infants in the ICC group received significantly more treatment for hypotension (ICC 45% vs DCC 12%,  $P < 0.01$ ). Interestingly, there was a trend toward lower rates of severe IVH, particularly for the most preterm infants (22–24 weeks of gestation) (12).

**TABLE 1** | Overview of randomized controlled trials regarding the methods of placental transfusion and their impact on hemodynamics in preterm infants.

Leading author (journal and year)	Reference	Placental transfusion	Number of patients	Gestational age	Hemodynamic background	Conclusions
Baenziger (Pediatrics 2007)	(10)	Delayed cord clamping (DCC) (60–90 s) vs immediate cord clamping (ICC)	39	30 (mean)	Cerebral blood volume was not different between two groups at the age of 4 and 24 h, and mean cerebral tissue oxygenation was higher in the DCC group at the age of 4 (4.4%) and 24 h (3.2%)	Delayed cord clamping improves cerebral oxygenation in preterm infants in the first 24 h. Mean arterial blood pressure (MABP) was higher in the DCC group at 4 h of age, but not at 24 h
Backes (Journal of Perinatology 2016)	(12)	DCC (30–45 s) vs ICC (<10 s)	40	22–27	Higher MABP in the first 24 h (4.13 mmHg difference) and significantly lower frequency of hypotension treatment were observed in the DCC group	DCC appears safe, feasible, and offers hematological and circulatory advantages No statistically significant differences were found in severe neonatal morbidities except for lower incidence of severe intraventricular hemorrhage (IVH) in the DCC group
Kugelman (American Journal of Perinatology 2007)	(13)	DCC (30–45 s) vs ICC (5–10 s)	65	<35	The DCC group tended to have higher initial diastolic blood pressure (BP) and higher hematocrit. Very low birth weight (VLBW) infants with DCC tended to have higher MABP and needed less mechanical ventilation and surfactant administration	DCC seems to be safe and may be beneficial (from ventilation and circulation point of view) when compared with ICC in premature infants
Sommers (Pediatrics 2012)	(14)	DCC vs ICC	51	<32 (24–31)	Higher superior vena cava flow (SVCF) over the study period and greater right ventricular output (RVO) at 48 h of life in the DCC group were observed. No difference in other parameters (middle cerebral artery velocity, left ventricle shortening fraction, patent ductus arteriosus (PDA), MABP) were described	DCC in preterm infants is associated with potentially beneficial hemodynamic changes over the first days of life
Katheria (Journal of Pediatrics 2014)	(15)	Umbilical cord milking (UCM) vs ICC	60	<32	Systemic blood flow (SVCF, RVO) in the first 6 and 30 h of life was higher in the UCM group	Greater systemic blood flow was demonstrated with UCM in preterm neonates The UCM group also had fewer days on oxygen therapy and less frequent use of oxygen at 36 weeks of corrected postmenstrual age
Ibrahim (Journal of Perinatology 2000)	(16)	DCC (20 s) vs ICC	32	24–28	Higher MABP at 4 h of life and lower need of albumin transfusion to stabilize blood pressure and increase tissue perfusion in the first 24 h were recorded in the DCC group	DCC significantly reduced the requirement for albumin transfusion. DCC also increased the initial hematocrit, hemoglobin levels, and MABP. The risks for PDA/IVH were similar in both groups
Katheria (Pediatrics 2015)	(17)	DCC (45–60 s) vs UCM	197	<32 (23–31)	Systemic blood flow (SVCF, RVO) in the first 12 h was higher in the UCM group. MABP over the first 15 h and urine output in the first 24 h were higher in the UCM group	UCM provides greater placental transfusion when compared to DCC, especially in preterm infants born by cesarean delivery. Risk for any IVH was lower in the UCM group. Other neonatal morbidities were similar
March (Journal of Perinatology 2013)	(18)	UCM vs ICC	75	24–28	Initial systolic and diastolic BPs were higher in the UCM group (difference of 2.5 mmHg for systolic and 1 mmHg for diastolic pressure). Differences were not statistically significant	Infants in the UCM group were significantly less likely to develop any IVH (incidence of 25% in the UCM group vs 51% in the ICC group). However, the incidence of severe IVH was similar in both groups

(Continued)



TABLE 1 | Continued

Leading author (journal and year)	Reference	Placental transfusion	Number of patients	Gestational age	Hemodynamic background	Conclusions
Oh (Journal of Perinatology 2011)	(19)	DCC (30–45 s) vs ICC (<10 s)	33	24–28	No difference observed between groups in hourly MABP in the first 12 h of life	DCC offers effective placento–fetal transfusion in VLBW infants—trend toward higher hematocrit in the first 6 weeks of life. However, no statistically significant differences in neonatal morbidities between groups were demonstrated
Mercer (Journal of Pediatrics 2016)	(20)	DCC (30–45 s) vs ICC (<10 s)	202	<32	No difference in the admission MABP between groups	There were no differences in rates of IVH; however, the DCC group had better motor performance at 18–22 months of corrected age (Bayley Scales of Infant Development third Edition)
Popat (Journal of Pediatrics 2016)	(21)	DCC (≥60 s) vs ICC (<10 s)	266	<30	No difference between groups in SVCF measurement; however, the DCC group had lower RVO. Rates of treated hypotension, PDA size, and its treatment were similar	DCC had no effect on systemic blood flow in preterm infants measured as SVCF in the first 24 h

Another study addressing various hemodynamic outcomes included over 200 patients. There was no significant difference between groups in the mean BP values and the lowest SVC flow [ICC 71.4 mL/kg/min (SD 28.1) vs DCC 70.2 mL/kg/min (SD 26.9);  $P = 0.7$ ]. The group with DCC also had lower right ventricular output (RVO) (–21.9 mL/kg/min, 95% CI –39.0, –4.7;  $P = 0.01$ ). Rates of interventions for hypotension did not differ between the groups (21).

Since the abovementioned reviews, the largest randomized trial of DCC compared to ICC has been reported by Australian Placental Transfusion Study Collaborative group (25). The study revealed no significant difference in the primary outcome (death or major morbidity at 36 weeks of gestation) between infants assigned to DCC (37.0%) and those assigned to ICC (37.2%) group (RR 1.00; 95% CI, 0.88–1.13;  $P = 0.96$ ). The mortality was 6.4% in the DCC group, and 9.0% in the ICC group ( $P = 0.03$  in unadjusted analyses;  $P = 0.39$  after *post hoc* adjustment for multiple secondary outcomes). Limitation of this study was that a considerable percentage (27%) of infants who were randomized to DCC group received ICC instead. The major reason for this was concerns about the infants well being (25). Moreover, similar limitations have been found in another large study, where the reasons included, in addition, implementation issues including miscommunication, concern about the mother, and fetal concern (21).

## COMPARISON 2: UCM COMPARED TO ICC

Umbilical cord milking has the potential to avoid some perceived disadvantages of DCC such as potential delay in life saving therapy of the sick neonate and the risk of hypothermia (2). However, the exact description of UCM technique varies between published studies, in particular, in terms of the number of times the stripping of umbilical cord is performed, the definition of the milking speed, and in whether the umbilical cord is cut before or

after the cord milking has been performed. The milking speed of 20 cm/2s and the frequency of cord stripping of 3–5 times are most commonly used in published cases.

A recent meta-analysis of 7 clinical trials involving 501 neonates compared UCM to ICC. Five studies included 277 infants born before <33 weeks. This review found that milking the cord was associated with higher Hb levels (mean difference, 20 g/L, 95% CI = 13–27), lower risk of IVH of all grades (RR 0.62, 95% CI = 0.41–0.93), and lower oxygen requirement at 36 weeks postmenstrual age (RR 0.42, 95% CI = 0.21–0.83). There was no statistically significant difference in mortality. When specifically addressing hypotension and its treatment, the authors found no difference in the incidence of hypotension in the first 24 h requiring treatment with volume expanders or support with inotropes between the two groups (11).

Katheria and colleagues randomized 60 neonates to UCM or ICC. They showed improved immediate transition in the delivery room. Neonates randomized to cord milking had a significantly higher mean and diastolic BP at 6 h. Infants in the milking arm had higher SVC flow in the first 6 h ( $98 \pm 27$  vs  $66 \pm 18$  mL/kg/min,  $P < 0.001$ ), greater hematocrite at 12 h ( $46 \pm 10$  vs  $38 \pm 7$  mg/dL,  $P = 0.02$ ), and were less likely to receive a blood transfusion (9/14 vs 14/14 infants,  $P = 0.04$ ) compared with infants with ICC (15).

Hosono et al. present data on 40 preterm infants who were randomized to UCM or ICC. UCM was associated with higher initial BP values. The initial systolic, diastolic, and mean BPs in the milked group were significantly higher than in the control group ( $P < 0.05$ ). This translated into a greater proportion of infants receiving inotropes in the control arm (26).

Conversely, March et al. found no difference between early systolic pressure values [3.0 (37.0–51.0) vs 40.5 (36.0–46.5),  $P$ -value 0.32] and diastolic BP values [22.0 (18.0–29.0) vs 21.0 (15.0–28.5)  $P$ -value 0.68] (18). In what appears to be a pre/post type study, Takami et al. report improved MABP on admission (mmHg) 28 (3.2) vs 35 (4.3)  $P$ -value <0.05, an improved urine output within 24 h (mL/kg) 1.1 (1.1) vs 1.9 (1.3)  $P$ -value

<0.05, and less need for volume expansion 58 vs 19% *P*-value <0.05 (27). They also recorded measures of cardiac output and cerebral oxygenation. Both LVCO and SVC flow in the milked group were significantly higher than those in the control group. The TOI in the milked group was significantly higher than in the control group over the first 36 h after birth. However, these findings need to be interpreted in light of potential biases in trial design.

### COMPARISON 3: DCC AND UCM

The key methodological differences between DCC and UCM have been highlighted previously. DCC or UCM may not be of equal benefit for all preterm newborns. In neonates born by cesarean delivery, more blood can potentially remain in the placenta at birth due to anesthetic and surgical interventions that interfere with active uterine contractions.

In a two-center trial involving 197 neonates born at less than 32 weeks of gestation, Katheria et al. demonstrated that UCM seems to be a preferential method of placental transfusion in neonates born by cesarean delivery (17). The UCM (4 strippings) group had higher SVC blood flow and RVO measures in the first 12 h of life, a higher Hb level, better body temperature in delivery room, higher BP in the first 15 h, and higher urine output in the first 24 h of life, as compared to the DCC (45–60 s) group. There were no differences between the DCC and UCM groups for neonates born vaginally. There were no differences in cerebral oxygen saturation or cardiac output as measured by impedance (17).

Rabe et al. also compared UCM (4 strippings) and DCC (30 s) in a similar population group (neonates of less than 33 weeks of gestation at birth), but found no difference between the groups in both the admission Hb levels or the number of blood transfusions required in the first 6 weeks of life. This trial, however, comprised of only 58 randomized neonates (31 in DCC and 27 in UCM group), and the mode of delivery was not accounted for (28).

### COMPARISON 4: VENTILATION WITH DCC COMPARED TO DCC ALONE

One trial has compared DCC alone to ventilation with DCC. In this trial, Katheria et al. compared 62 infants with DCC alone to 63 infants with ventilation with DCC and found no differences between a large number of early hemodynamic changes (cerebral oxygenation by near-infrared spectroscopy, cardiac output and stroke volume by electrical cardiometry, or SVC flow by functional echocardiography) (29).

### SUMMARY OF HAEMODYNAMIC EFFECTS

Recent data demonstrate that DCC or UCM is advantageous over ICC. Despite a number of trials performed to date, the evidence for improved cardiovascular adaptation is somewhat inconsistent. What is clear is that placental transfusion, either as DCC or UCM, compared to ICC is not associated with an adverse effect on BP, the need for volume administration or

inotrope use. The majority of studies that report on these outcomes either show no difference or else an improvement in the placental transfusion arm.

Very few trials report on measures of cardiac output and the largest study that presented data on SVC flow and RVO had a high crossover rate from DCC to ICC. This trial found no difference in SVC flow and a reduction in RVO in the ICC group (21). Conversely, milking was associated with an improvement in both SVC flow and RVO, suggesting that UCM may be a better alternative to DCC in cardiovascular adaptation. These questions remain to be answered by future studies.

### CARDIOVASCULAR ADAPTATION AND LONG-TERM OUTCOMES

The potential benefit of placental transfusion with regards to neurodevelopmental outcome may be multifactorial. Enhanced cardiovascular adaptation resulting in improved cardiac output and improved cerebral blood flow may play an important role. The potential benefits may result in a reduction in brain injury as evidenced by reduced rates of IVH. In addition to these potential changes, improved blood volume resulting in increased iron content may also be neuroprotective. Furthermore, as cord blood is known to contain hematopoietic stem cells at birth, neonates may possibly benefit from their neuroprotective or even neurorestorative effect (20). Mercer et al. reported on preterm infants of less than 32 weeks of gestation, who received either ICC (in less than 10 s) or DCC (after 30–45 s). While there was no difference in the first recorded mean BP, rates of IVH or late onset sepsis between the groups, the DCC group showed better motor performance at 18–22 months corrected age (Bayley Scales of Infant Development, Third Edition) suggesting other potential mechanisms (20). Long-term follow-up of completed trials and future studies will help to clarify such potential benefits.

A recently published study of 197 infants showed those randomized to UCM had higher language and cognitive scores compared with those randomized to DCC. There was no difference in rates of mild or moderate to severe neurodevelopmental impairment (17).

### CONCLUSION

Many questions remain unanswered in relation to placental transfusion and its potential hemodynamic effects. UCM may have advantages over DCC by reducing the incidence of morbidities, the number of needed blood transfusions, and the requirement for supplemental oxygen at 36 weeks postmenstrual age. UCM may be of greater benefit than DCC to neonates born by cesarean section and a significant proportion of preterm neonates tend to be delivered by this method. UCM is more likely to be readily complied with than DCC due to fewer concerns of delaying commencement of care for the preterm neonate, as was evidenced in the recent RCT where 27% of patients assigned to DCC had ICC performed instead for this reason (25).

Reassuringly a recent meta-analysis by Backes et al. show that there seem to be no differences regarding safety measures

observed (5-min Apgar scores, admission temperatures of neonates, incidence of delivery room intubation, peak serum bilirubin levels) when using DCC or UCM (30).

Many of the published clinical studies regarding placental transfusion have excluded neonates with the need for resuscitation at delivery, limiting the generalizability of the findings. Studies that include these patients are hence needed. There are, however, a number of planned and ongoing studies in this area. Some of these studies include short term markers of cardiocerebral adaptation incorporating echocardiography measures and near infrared spectroscopy. One such trial is the PREMOD 2 study (NCT 01866982), which includes detailed assessment of preterm infants of less than 28 weeks gestation in the delivery room and during the first 24 h of life. Infants will receive DCC or UCM and will have measures of cerebral oxygenation and echocardiography performed, which will hopefully provide further insight into the (patho-)physiological changes that are occurring over this time. Additional studies regarding neurodevelopmental outcomes, specifically in preterm neonates having

had DCC in comparison to UCM performed would also be of great importance.

## AUTHOR CONTRIBUTIONS

ZS, SF, and PK: these authors contributed equally to this work—substantially contributed to the conception of the work, drafted and reviewed the article. SF and PK: analysis and interpretation of presented data. ED: reviewed the article for important intellectual content. All authors gave final approval of the version to be published and agreed to be accountable for all aspects of the work.

## FUNDING

The work leading to the article to be published has received funding as part of the HIP Trial from the European Union Seventh Framework Programme (FP7/2007–2013) under grant agreement no. 260777. This work was supported by a Science Foundation Ireland Research Centre Award (INFANT-12/RC/2272).

## REFERENCES

- Hillman NH, Kallapur SG, Jobe AH. Physiology of transition from intrauterine to extrauterine life. *Clin Perinatol* (2012) 39:769–83. doi:10.1016/j.clp.2012.09.009
- Katheria AC, Lakshminrusimha S, Rabe H, McAdams R, Mercer JS. Placental transfusion: a review. *J Perinatol* (2017) 37:105–11. doi:10.1038/jp.2016.151
- Wyllie J, Perlman JM, Kattwinkel J, Wyckoff MH, Aziz K, Guinsburg R, et al. Part 7: neonatal resuscitation: 2015 international consensus on cardiopulmonary resuscitation and emergency cardiovascular care science with treatment recommendations. *Resuscitation* (2015) 95:e169–201. doi:10.1016/j.resuscitation.2015.07.045
- Wyllie J, Bruinenberg J, Roehr CC, Rüdiger M, Trevisanuto D, Urlesberger B. European Resuscitation Council guidelines for resuscitation 2015: section 7. Resuscitation and support of transition of babies at birth. *Resuscitation* (2015) 95:249–63. doi:10.1016/j.resuscitation.2015.07.029
- Sweet DG, Carnielli V, Greisen G, Hallman M, Ozek E, Plavka R, et al. European consensus guidelines on the management of respiratory distress syndrome – 2016 update. *Neonatology* (2017) 111:107–25. doi:10.1159/000448985
- Safarulla A. A review of benefits of cord milking over delayed cord clamping in the preterm infant and future directions of research. *J Matern Fetal Neonatal Med* (2017) 30:2966–73. doi:10.1080/14767058.2016.1269319
- Bhatt S, Alison BJ, Wallace EM, Crossley KJ, Gill AW, Kluckow M, et al. Delaying cord clamping until ventilation onset improves cardiovascular function at birth in preterm lambs. *J Physiol* (2013) 591:2113–26. doi:10.1113/jphysiol.2012.250084
- Nevill E, Meyer MP. Effect of delayed cord clamping (DCC) on breathing and transition at birth in very preterm infants. *Early Hum Dev* (2015) 91:407–11. doi:10.1016/j.earlhumdev.2015.04.013
- Ersdal HL, Linde J, Mduma E, Auestad B, Perlman J. Neonatal outcome following cord clamping after onset of spontaneous respiration. *Pediatrics* (2014) 134:265–72. doi:10.1542/peds.2014-0467
- Baenziger O, Stolkin F, Keel M, von Siebenthal K, Fauchere J-C, Das Kundu S, et al. The influence of the timing of cord clamping on postnatal cerebral oxygenation in preterm neonates: a randomized, controlled trial. *Pediatrics* (2007) 119:455–9. doi:10.1542/peds.2006-2725
- Al-Wassia H, Shah PS. Efficacy and safety of umbilical cord milking at birth: a systematic review and meta-analysis. *JAMA Pediatr* (2015) 169:18–25. doi:10.1001/jamapediatrics.2014.1906
- Backes CH, Huang H, Jams JD, Bauer JA, Giannone PJ. Timing of umbilical cord clamping among infants born at 22 through 27 weeks' gestation. *J Perinatol* (2016) 36:35–40. doi:10.1038/jp.2015.117
- Kugelman A, Borenstein-Levin L, Riskin A, Chistyakov I, Ohel G, Gonen R, et al. Immediate versus delayed umbilical cord clamping in premature neonates born < 35 weeks: a prospective, randomized, controlled study. *Am J Perinatol* (2007) 24:307–15. doi:10.1055/s-2007-981434
- Sommers R, Stonestreet BS, Oh W, Laptook A, Yanowitz TD, Raker C, et al. Hemodynamic effects of delayed cord clamping in premature infants. *Pediatrics* (2012) 129:e667–72. doi:10.1542/peds.2011-2550
- Katheria AC, Leone TA, Woelkers D, Garey DM, Rich W, Finer NN. The effects of umbilical cord milking on hemodynamics and neonatal outcomes in premature neonates. *J Pediatr* (2014) 164:1045–50.e1. doi:10.1016/j.jpeds.2014.01.024
- Ibrahim HM, Krouskop RW, Lewis DE, Dhanireddy R. Placental transfusion: umbilical cord clamping and preterm infants. *J Perinatol* (2000) 20:351–4. doi:10.1038/sj.jp.7200408
- Katheria AC, Truong G, Cousins L, Oshiro B, Finer NN. Umbilical cord milking versus delayed cord clamping in preterm infants. *Pediatrics* (2015) 136:61–9. doi:10.1542/peds.2015-0368
- March MI, Hacker MR, Parson AW, Modest AM, de Veciana M. The effects of umbilical cord milking in extremely preterm infants: a randomized controlled trial. *J Perinatol* (2013) 33:763–7. doi:10.1038/jp.2013.70
- Oh W, Fanaroff AA, Carlo WA, Donovan EF, McDonald SA, Poole WK, et al. Effects of delayed cord clamping in very-low-birth-weight infants. *J Perinatol* (2011) 31(Suppl 1):S68–71. doi:10.1038/jp.2010.186
- Mercer JS, Erickson-Owens DA, Vohr BR, Tucker RJ, Parker AB, Oh W, et al. Effects of placental transfusion on neonatal and 18 month outcomes in preterm infants: a randomized controlled trial. *J Pediatr* (2016) 168:50–5.e1. doi:10.1016/j.jpeds.2015.09.068
- Popat H, Robledo KP, Sebastian L, Evans N, Gill A, Kluckow M, et al. Effect of delayed cord clamping on systemic blood flow: a randomized controlled trial. *J Pediatr* (2016) 178:81–6.e2. doi:10.1016/j.jpeds.2016.08.004
- Rabe H, Diaz-Rossello JL, Duley L, Dowswell T. Effect of timing of umbilical cord clamping and other strategies to influence placental transfusion at preterm birth on maternal and infant outcomes. *Cochrane Database Syst Rev* (2012) 8:CD003248. doi:10.1002/14651858.CD003248.pub3
- Mercer JS, McGrath MM, Hensman A, Silver H, Oh W. Immediate and delayed cord clamping in infants born between 24 and 32 weeks: a pilot randomized controlled trial. *J Perinatol* (2003) 23:466–72. doi:10.1038/sj.jp.7210970
- Mercer JS, Vohr BR, McGrath MM, Padbury JF, Wallach M, Oh W. Delayed cord clamping in very preterm infants reduces the incidence of intraventricular hemorrhage and late-onset sepsis: a randomized, controlled trial. *Pediatrics* (2006) 117:1235–42. doi:10.1542/peds.2005-1706
- Tarnow-Mordi W, Morris J, Kirby A, Robledo K, Askie L, Brown R, et al. Delayed versus immediate cord clamping in preterm infants. *N Engl J Med* (2017) 377:2445–55. doi:10.1056/NEJMoa1711281
- Hosono S, Mugishima H, Fujita H, Hosono A, Okada T, Takahashi S, et al. Blood pressure and urine output during the first 120 h of life in infants born at

- less than 29 weeks' gestation related to umbilical cord milking. *Arch Dis Child Fetal Neonatal Ed* (2009) 94:F328–31. doi:10.1136/adc.2008.142935
27. Takami T, Suganami Y, Sunohara D, Kondo A, Mizukaki N, Fujioka T, et al. Umbilical cord milking stabilizes cerebral oxygenation and perfusion in infants born before 29 weeks of gestation. *J Pediatr* (2012) 161:742–7. doi:10.1016/j.jpeds.2012.03.053
28. Rabe H, Jewison A, Alvarez RF, Crook D, Stilton D, Bradley R, et al. Milking compared with delayed cord clamping to increase placental transfusion in preterm neonates: a randomized controlled trial. *Obstet Gynecol* (2011) 117:205–11. doi:10.1097/AOG.0b013e3181fe46ff
29. Katheria A, Poeltler D, Durham J, Steen J, Rich W, Arnell K, et al. Neonatal resuscitation with an intact cord: a randomized clinical trial. *J Pediatr* (2016) 178:75–80.e3. doi:10.1016/j.jpeds.2016.07.053
30. Backes CH, Rivera BK, Haque U, Bridge JA, Smith CV, Hutchon DJR, et al. Placental transfusion strategies in very preterm neonates: a systematic review and meta-analysis. *Obstet Gynecol* (2014) 124:47–56. doi:10.1097/AOG.0000000000000324

**Conflict of Interest Statement:** The authors state that there are no conflicts of interest regarding the publication of the article.

Copyright © 2018 Straňák, Feyereislová, Korček and Dempsey. This is an open-access article distributed under the terms of the Creative Commons Attribution License (CC BY). The use, distribution or reproduction in other forums is permitted, provided the original author(s) and the copyright owner are credited and that the original publication in this journal is cited, in accordance with accepted academic practice. No use, distribution or reproduction is permitted which does not comply with these terms.





## Case report

# Fetal distress and circulatory disturbance in monozygotic twins: Possible risk factors for sialadenitis?



Peter Korčák<sup>a,b</sup>, Zbyněk Straňák<sup>a,b,\*</sup>

<sup>a</sup> Institute for the Care of Mother and Child, Fetal Medicine Center, Podolské nábřeží 157, 14700 Prague, Czech Republic

<sup>b</sup> Third Faculty of Medicine, Charles University, Ruská 87, 10000 Prague, Czech Republic

## ARTICLE INFO

## Article history:

Received 20 August 2015

Received in revised form 25 October 2015

Accepted 29 October 2015

Available online 9 November 2015

## Keywords:

Submandibular sialadenitis

Preterm newborn

Monozygotic pregnancy

## ABSTRACT

Neonatal sialadenitis is a rare condition. The vast majority of cases are caused by *Staphylococcus aureus* with predominant involvement of the parotid gland and need for long-term antimicrobial therapy. We reviewed three distinct cases of submandibular sialadenitis in preterm infants from monozygotic pregnancies. The association with neonatal sialadenitis is unproven. We speculate about the role of fetal distress and circulatory compromise in monozygotic twins as a risk factor in the development of this serious condition.

© 2015 Elsevier Ireland Ltd. All rights reserved.

## 1. Introduction

Neonatal sialadenitis is an uncommon disease. Most of the reports demonstrate suppurative parotitis caused by *Staphylococcus aureus* with prematurity, dehydration, male gender and oral trauma being the main risk factors [1]. The primary or solitary involvement of the submandibular gland is extremely rare [2]. The authors describe three preterm infants from monozygotic diamniotic pregnancies who developed unilateral submandibular sialadenitis. The possible association between monozygosity and sialadenitis is discussed.

## 2. Case reports

### 2.1. Patient 1

A preterm infant was born at 30 weeks gestation due to selective intrauterine growth restriction. The pregnancy was complicated by twin-to-twin transfusion syndrome (TTTS) and the prenatal ultrasound revealed decreased cerebroplacental ratio multiples of median (CPR MoM-multiples of median show how far the test result deviates from the median) in the small for

gestational age twin (Table 1). The TTTS (Quintero Stage 1) did not require intervention. The immediate postnatal period was uneventful. A swollen erythematous mass (2.5 × 2.0 cm) was found in the left submandibular region with clinical signs of infection on the 10th day of life. The laboratory markers for infection were positive except for blood culture. The patient was treated with Oxacillin and Gentamicin for suspected submandibular sialadenitis. There was no purulent discharge in the mouth and the swelling regressed within 1 week. The infant experienced no further complications.

### 2.2. Patient 2

A preterm infant from monozygotic pregnancy was born at 30 weeks gestation due to the abnormal prenatal ultrasound, which showed decreased CPR MoM. The infant was intubated, received surfactant and remained on ventilatory support for 1 week. On the 7th day of life the newborn developed a swelling in the left submandibular region. The mass was tender on palpation; the infant stopped tolerating the feeds and was crying irritably. The laboratory work-up was positive for infection, the blood culture remained negative and the baby was started on intravenous Oxacillin. Despite the therapy, the mass was enlarging and the ultrasound disclosed abscess formation in the gland (Fig. 1). Because of the complication the infant underwent surgery where incision was made and the suppurative contents drained. A culture obtained during operation was positive for *S. aureus*. Following

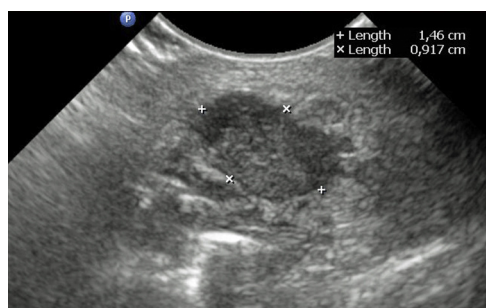
\* Corresponding author at: Institute for the Care of Mother and Child, Fetal medicine center, Podolské nábřeží 157, 14700 Prague 4, Czech Republic. Tel.: +420 296 511 806; fax: +420 241 432 572.

E-mail address: [z.stranak@seznam.cz](mailto:z.stranak@seznam.cz) (Z. Straňák).

**Table 1**  
Patients' overview. Prenatal and postnatal parameters.

	Patient 1	Patient 2	Patient 3
Gestational age (weeks)	30+1	30+2	33+4
Birth weight (grams)	960	1360	1940
Arteria cerebri media–pulsatility index <sup>1</sup>	1.10	1.25	1.10
Cerebroplacental ratio <sup>2</sup>	0.60	1.29	1.22
Twin-to-twin transfusion syndrome	Yes	No	No
Sex	Male	Male	Male
Mode of delivery	Cesarean section	Cesarean section	Cesarean section
Congenital anomalies	None	None	Left-sided pes equinus
C-reactive protein (mg/l)	24.50	76.60	7.50
Duration of antibiotic treatment (days)	5	15	5
Surgery	No	Yes	No
Blood culture	Negative	Negative	Positive

<sup>1,2</sup> Fetal ultrasound parameters measured on the day of delivery. For normal ranges see the article by Ebbing et al. [7].

**Fig. 1.** Multilocular abscess cavity in the submandibular gland on ultrasound scan.

treatment, the neonate recovered without any further complications.

### 2.3. Patient 3

A preterm infant from monochorionic pregnancy was born at 33 weeks gestation due to preeclampsia and abnormal prenatal ultrasound (decreased CPR MoM). On the 3rd day of life the newborn presented with transient papulopustular rash in the right inguinal and cubital region and *S. aureus* and *hominis* were cultured from the swab. On the 5th day of life, an erythematous swelling developed in the right submandibular area. Clinical and laboratory signs of sepsis were positive. The antibiotic therapy (Ampicillin, Sulbactam) was initiated, followed by Vankomycin due to *S. aureus* in the blood culture. The infant recovered rapidly without any further complications and post-treatment blood culture was negative.

## 3. Discussion

Unilateral submandibular sialadenitis is a rare finding in newborns. Suggested risk factors include hypostimulation of the salivary glands during prolonged orogastric or nasogastric feeding, bacterial colonization of the oral cavity, prematurity, dehydration and duration of hospitalization in the intensive care unit [2]. Our patients exhibited many features of previously described cases of submandibular sialadenitis. No congenital anomalies were found in the oral cavity and other pathologies in

the submandibular region were ruled out. Even though all patients were preterm, none of them suffered from dehydration. One preterm (Patient 3) did not require gastric tube feeding due to his gestational age and birth weight and for the same reasons was not admitted to the intensive care unit. The blood culture was positive for *S. aureus* in one of the patients, while in another one the bacteria were cultured from the purulent material obtained during surgery. However, one patient had negative blood culture and there was no purulent material present for culture. These observations emphasize the multifactorial etiology of the disease [1,2].

Interestingly, all patients were monochorionic twins and this factor has not yet been associated with neonatal sialadenitis. The monochorionicity increases the risk for hemodynamic compromise in the fetuses, which can lead to prenatal and postnatal complications (reversed a-wave ductus venosus, fusion of right and left ventricular inflow, tricuspid and mitral valve regurgitation, increased myocardial performance index, organ complications) [3–5]. Importantly, the adverse hemodynamic findings exist even in the absence of the TTTS [5,6]. In our series, both scenarios occurred (TTTS and non-TTTS pregnancies). Furthermore, all our patients presented with abnormal fetal ultrasound parameters—decreased middle cerebral artery pulsatility index and thus decreased cerebroplacental ratio [7]. These findings associated with the fetal distress and circulatory compromise could increase the susceptibility to infection [8,9]. In contrast, as monochorionic pregnancy suffers from an increased risk of preterm birth with significant morbidity, this fact alone can increase the likelihood of neonatal infection, including sialadenitis [10]. However, we did not experience neonatal sialadenitis prior to the establishment of the fetal medicine center, which started concentrating monochorionic pregnancies.

## 4. Conclusion

Neonatal sialadenitis is a rare disease with varied clinical course and ongoing infection surveillance is strongly recommended in order to prevent or treat the condition. Furthermore, monochorionic pregnancy with fetal hemodynamic dysregulation could be an additive risk factor in the complex pathophysiology of sialadenitis.

## Conflict of interest statement

None.

## Acknowledgments

Supported by Research Project PRVOUK 32. Written consents were obtained from the parents of all reviewed patients.

## References

- [1] L. Decembrino, G. Ruffinazzi, F. Russo, P. Manzoni, M. Stronati, Monolateral suppurative parotitis in a neonate and review of literature, *Int. J. Pediatr. Otorhinolaryngol.* 76 (2012) 930–933, <http://dx.doi.org/10.1016/j.ijporl.2012.04.003>.
- [2] R.M. McAdams, E.A. Mair, M. Rajnik, Neonatal suppurative submandibular sialadenitis: case report and literature review, *Int. J. Pediatr. Otorhinolaryngol.* 69 (2005) 993–997, <http://dx.doi.org/10.1016/j.ijporl.2005.01.027>.
- [3] Z. Stranak, P. Korcek, L. Hympanova, M. Kyncl, L. Krofta, Prenatally acquired multiple limb ischemia in a very low birth weight monochorionic twin, *Fetal Diagn. Ther.* 2015 (2015), <http://dx.doi.org/10.1159/000434644>.
- [4] B. Detlefsen, T.M. Boemers, C. Schimke, Necrotizing enterocolitis in premature twins with twin-to-twin transfusion syndrome, *Eur. J. Pediatr. Surg.* 18 (2008) 50–52, <http://dx.doi.org/10.1055/s-2007-965788>.
- [5] T. Van Mieghem, L. Lewi, L. Gucciardo, P. Dekoninck, D. Van Schoubroeck, R. Devlieger, et al., The fetal heart in twin-to-twin transfusion syndrome, *Int. J. Pediatr.* 2010 (2010), <http://dx.doi.org/10.1155/2010/379792>.

- [6] E. Lopriore, L. Lewi, D. Oepkes, A. Debeer, F.P. Vandenbussche, J. Deprest, et al., In utero acquired limb ischemia in monochorionic twins with and without twin-to-twin transfusion syndrome, *Prenat. Diagn.* 28 (2008) 800–804, <http://dx.doi.org/10.1002/pd.2000>.
- [7] C. Ebbing, S. Rasmussen, T. Kiserud, Middle cerebral artery blood flow velocities and pulsatility index and the cerebroplacental pulsatility ratio: longitudinal reference ranges and terms for serial measurements, *Ultrasound Obstet. Gynecol.* 30 (2007) 287–296, <http://dx.doi.org/10.1002/uog.4088>.
- [8] A.A. Khalil, J. Morales-Rosello, M. Morlando, H. Hannan, A. Bhide, A. Papageorghiou, et al., Is fetal cerebroplacental ratio an independent predictor of intrapartum fetal compromise and neonatal unit admission? *Am. J. Obstet. Gynecol.* 213 (2015) 54e1–610e, <http://dx.doi.org/10.1016/j.ajog.2014.10.024>.
- [9] P.D. Wadhwa, J.F. Culhane, V. Rauh, S.S. Barve, V. Hogan, C.A. Sandman, et al., Stress, infection and preterm birth: a biobehavioural perspective, *Paediatr. Perinat. Epidemiol.* 15 (2001) 17–29, <http://dx.doi.org/10.1046/j.1365-3016.2001.00005.x>.
- [10] S. Masheer, H. Maheen, S. Munim, Perinatal outcome of twin pregnancies according to chorionicity: an observational study from tertiary care hospital, *J. Matern. Fetal Neonatal Med.* 28 (2015) 23–25, <http://dx.doi.org/10.3109/14767058.2014.899576>.

# Prenatally Acquired Multiple Limb Ischemia in a Very Low Birth Weight Monochorionic Twin

Zbyněk Straňák<sup>a, b</sup> Peter Korček<sup>a, b</sup> Lucie Hympánová<sup>a, b</sup> Martin Kynčl<sup>c</sup>  
Ladislav Krofta<sup>a, b</sup>

<sup>a</sup>Fetal Medicine Centre, Institute for the Care of Mother and Child, <sup>b</sup>Third Faculty of Medicine, Charles University, and <sup>c</sup>Department of Radiology, University Hospital of Motol, Prague, Czech Republic

## Key Words

Monochorionic pregnancy · Twin-to-twin transfusion syndrome · Multiple limb ischemia

## Abstract

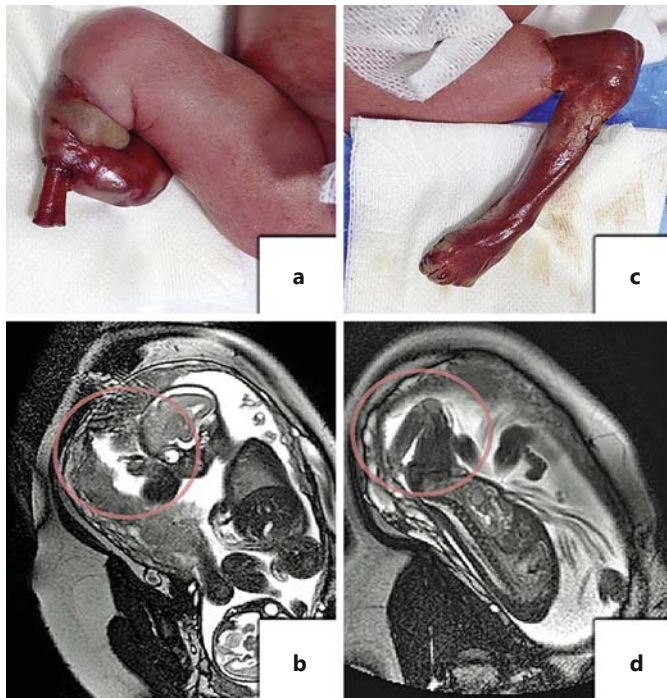
Limb ischemia is an extremely rare event occurring in mono-chorionic twin pregnancy complicated by twin-to-twin transfusion syndrome (TTTS) and twin anemia polycythemia sequence (TAPS). The authors describe a case of TTTS and TAPS treated successfully using amnioreduction and laser ablation. However, severe ischemia of both lower extremities in the recipient twin developed after the fetal treatment. This serious complication was diagnosed on MRI in utero and confirmed postnatally. Elective amputation of the affected limbs was performed. The etiology of the disease remains unclear despite profound clinical and histopathological examinations; although the role of thromboembolism in mono-chorionic pregnancy seems to be most likely, this unique case of multiple limb ischemia with distinct macroscopic findings has not yet been described.

© 2015 S. Karger AG, Basel

## Case Report

This is the first report of multiple limb ischemia in mono-chorionic twins. A fetal MRI revealed multiple limb ischemia. The mono-chorionic diamniotic twins were referred for twin-to-twin transfusion syndrome (TTTS) at 21 weeks of gestation (grade I according to Quintero). The symptoms of twin anemia polycythemia syndrome (TAPS) developed at 24 weeks of gestation, and fetal therapy was indicated. A fetoscopic guided laser occlusion, using the Solomon technique, was performed, followed by amniodrainage. There was a significant improvement of TAPS and TTTS ultrasound parameters in both twins after the intervention. A targeted MRI revealed no lesion in the twins' fetal nervous system. The pregnancy had to be terminated for preterm uterine contractions at 29 5/7 weeks of gestation by cesarean section. The birth weight for twin A (former recipient) was 1,202 g (hemoglobin 202 g/l, hematocrit 0,599) and 1,250 g (hemoglobin 172 g/l, hematocrit 0,494) for twin B (former donor). The affected twin A exhibited bilateral lower limb deformities where the right lower limb was edematous and cyanotic with a protruding tibia and fibula, whereas the left one was hypoplastic, macerated and necrotic with sharp demarcation of the defect from the rest of the leg (fig. 1). No signs of amniotic bands were seen after the delivery, and the ultrasound scan revealed no thromboembolic complications. Both legs were amputated at the demarcation line and the infant was discharged after 50 days with satisfactorily healed wounds.





**Fig. 1.** Multiple limb ischemia with different macroscopic findings between the right (**a, b**) and left (**c, d**) lower extremity, documented by fetal MRI (circles) and immediately after birth.

The predominant therapeutic intervention is selective laser ablation of the anastomoses, which can improve the survival and the outcome of the surviving twins [2]. There is also an increased risk for vascular limb ischemia which might be independent of the TTTS and fetal therapy [3]. In the cases reviewed, only 1 extremity was affected, and they shared a very similar macroscopic pathology [4].

Our case is unique in that multiple extremities were affected and that the macroscopic findings were different, although previously described. We suggest that the bilateral limb ischemia was caused by the monochorionic pregnancy pathophysiology rather than other complications [5]. The role of laser treatment might be discussed, although given the fact that the procedure was ultrasound guided and performed at an experienced fetal institution, the causation is unlikely. The case makes a point of the importance of thorough ultrasound examination of all organ systems including the extremities (because our antenatal ultrasound scans revealed no abnormality). Furthermore, the MRI was targeted on the presence and degree of white matter injury, which was not diagnosed. Nevertheless, the retrospective analysis of the scan revealed pathologic changes in both lower limbs. A thorough full-scan MRI evaluation can disclose other than CNS abnormalities, including thromboembolic complications.

## Discussion

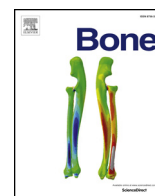
Monochorionic twin pregnancy suffers from an increased risk of serious complications for the fetuses and for the mother, especially if TTTS or TAPS is present [1].

## Acknowledgment

The study was supported by a research project (registration ID: CZ.2.16/3.1.00/24015).

## References

- 1 Abdel-Sattar M, Platt LD, DeVore G, Porto M, Benirschke K, Chmait RH: Treatment of complicated spontaneous twin anemia-polythemia sequence via fetoscopic laser ablation of the vascular communications. *Fetal Diagn Ther*, Epub ahead of print.
- 2 Ahmed S, Luks Fi, O'Brien BM, Muratore CS, Carr SR: Influence of experience, case load, and stage distribution on outcome of endoscopic laser surgery for TTS: a review. *Prenat Diagn* 2010;30:314–319.
- 3 Lopriore E, Lewi L, Oepkes D, Debeer A, Vandenbussche FP, Deprest J, Walther FJ: In utero acquired limb ischemia in monochorionic twins with and without twin-to-twin transfusion syndrome. *Prenat Diagn* 2008;28:800–804.
- 4 Schrey S, Huber A, Hecher K, Quintero R, Alkazaleh F, Moise KJ Jr, Allbert JR, Schneider C, Palermo M, Yinon Y, Chmait RH, Windrim R, Ryan G: Vascular limb occlusion in twin-twin transfusion syndrome (TTTS): case series and literature review. *Am J Obstet Gynecol* 2012;207:131.
- 5 Rodrigues A, Araújo C, Carvalho R, Melo MA, Pinto L, da Graça LM: Limb constriction secondary to pseudoamniotic band syndrome after selective fetoscopic laser surgery: report of a case with a favorable outcome. *Fetal Diagn Ther* 2012;32:288–291.



## Full Length Article

## Tibial speed of sound changes in preterm infants during the first year of life

Zuzana Korčecová<sup>a</sup>, Peter Korček<sup>a,b,\*</sup>, Václav Čunát<sup>a</sup>, Zuzana Staníčková<sup>a</sup>, Patrícia Zemanová<sup>a</sup>, Zbyněk Straňák<sup>a,b</sup><sup>a</sup> Institute for the care of mother and child - Neonatology, Podolské nábřeží 157/36, Prague 14700, Czech Republic<sup>b</sup> 3rd Faculty of Medicine, Charles University, Ruská 2411/87, Prague 10000, Czech Republic

## ARTICLE INFO

## Keywords:

Bone  
Speed of sound  
Preterm infants

## ABSTRACT

**Introduction:** Metabolic bone disease of prematurity (MBD) frequently affects preterm infants. The accurate diagnosis of the MBD remains a challenging issue despite characteristic clinical, laboratory and imaging features. Recently, non-invasive quantitative ultrasound (QUS) measuring speed of sound (SOS) has been applied to assess bone status. Limited data are available on comparison of QUS among preterm infants.

**Objective:** To evaluate development of tibial bone SOS values in preterm infants during the first year of life and compare the SOS values among different birth weight categories.

**Methods:** QUS was used in 153 infants below 34 weeks of gestation. The study group was divided into 3 subgroups based on birth weight (BW):  $\leq 1000$  g, 1001–1500 g and  $> 1500$  g. SOS measurement was performed at 6 and 12 months of corrected age (CA).

**Results:** Overall, we found significant increase in mean tibial SOS between 6 and 12 months of CA ( $3004 \pm 123$  vs  $3253 \pm 109$  m/s,  $p = 0.001$ ). There were significant differences in SOS among birth weight categories at 6 months of CA ( $p = 0.045$ ). However, these differences were not statistically significant at 12 months of CA ( $p = 0.289$ ). The infants  $\leq 1000$  g scored the highest SOS values at both time points.

**Conclusions:** Tibial SOS significantly increases during infancy in preterm newborns. Significant variation exists in SOS at 6 months, but not at 12 months of corrected age according to BW. Moreover, inverse correlation between BW and SOS indicating better bone status was revealed in extremely low birth weight infants at both 6 or at 12 months of CA.

## 1. Introduction

Intrauterine bone development occurs mainly during the third trimester through significant (approximately 80%) calcium and phosphate accretion [1,2]. In addition, calcium accretion is exponentially related to gestational age and linearly related to birth weight (BW) [3]. These processes are seriously influenced by preterm delivery and lead to metabolic bone disease (MBD) that can be aggravated by other neonatal morbidities, medication (corticosteroids, diuretics) and nutritional management [4–8]. The incidence of MBD in very low birth weight infants (BW  $< 1500$  g) and extremely low birth weight infants (BW  $< 1000$  g) varies between 16 and 40% [9]. MBD can be diagnosed based on characteristic clinical, laboratory and imaging features [10–12]. Unfortunately, these methods are invasive and inaccurate in some cases [12–15].

Recently, quantitative ultrasound (QUS) has been applied to analyze bone status owing to its numerous advantages for preterm newborns – non-invasive, radiation-free, portable and relatively inexpensive

method [2,15,16]. QUS gives information about both quantitative and qualitative aspects - bone density, cortical thickness, elasticity and bone microarchitecture [16]. Commonly used parameter of QUS is speed of sound (SOS).

Previous studies showed that SOS values exhibit certain pattern within the first year of life [2,4]. After birth, there is an initial decrease with nadir around 2–4 months of age, after which catch-up growth occurs with increasing SOS [15,17]. In preterm newborns, the decrease and subsequent catch-up are more significant, however, at 12 months of age, SOS values do not differ significantly between term and preterm infants [2,4]. The pattern can be attributed to changes in cortical bone (92% of bone mass after birth) and postnatal growth of medullar bone (especially in long bones), resulting in physiological decrease in cortical bone thickness [18,19].

As many studies focused on comparing term and preterm population, the aim of this study was to evaluate postnatal changes of tibial SOS in preterm infants only and shed light on postnatal SOS development in different birth weight categories.

\* Corresponding author at: Institute for the care of mother and child, Neonatology, Podolské nábřeží 157, Prague 14700, Czech Republic.

E-mail address: [peterkorcek.upmd@gmail.com](mailto:peterkorcek.upmd@gmail.com) (P. Korček).<https://doi.org/10.1016/j.bone.2019.115191>

Received 21 October 2019; Received in revised form 26 November 2019; Accepted 13 December 2019

Available online 14 December 2019

8756-3282/ © 2019 Elsevier Inc. All rights reserved.

## 2. Materials and methods

### 2.1. Subjects

The study was approved by the Review Board and Ethics Committee of Institute for the care of mother and child. Informed consent was documented by the use of a written consent form and signed by the parents of all infants enrolled in the study. Preterm infants < 34 weeks of gestation were enrolled and followed-up in prospective, observational study. The data were collected from October 2016 to August 2018. Patients with serious contributing morbidities were excluded (congenital malformations, chromosomal abnormalities, renal and metabolic disorders).

### 2.2. QUS measurements of the tibial SOS

The measurement was performed using an appropriate sized probe (CS cortex small probe) with the Sunlight Omnisense 7000S Quantitative Ultrasound scanner (Sunlight Medical Ltd., Israel). This technique allows the measurement of the time taken by the ultrasound signal to travel between transmitters and receivers contained within the probe. These propagation times determine the bone SOS (measured in m/s). SOS increases with an increase in bone density and strength. System quality verification of the Sunlight Omnisense 7000S Quantitative Ultrasound scanner was performed using a phantom before each measurement, provided by the manufacturer.

SOS was measured on tibial bone for all enrolled infants. During measurements, the mid-tibia shaft length was determined by measuring the distance from the knee to the heel – one half of the distance was noted and marked at that point using a medical grade marker. The probe was then aligned along and parallel to the bone and moved around in an arc over the tibia until a reliable estimate of the SOS was obtained. The machine indicated when it had obtained adequate data for each cycle, and a minimum of three cycles were required to generate a measurement. In some infants, it was only possible to obtain an adequate signal when the probe was held stationary at one point on the tibia. The signal was sometimes only obtained after the probe was moved slightly from the measured site. The same probe was used for all measurements. The examination was tolerated well by all the infants.

The measurements were performed at 6 and 12 months of corrected age (range  $0 \pm 14$  days). Small for gestational age infants were defined as having birth weight of < 10th percentile according to Fenton growth charts [20]. Other neonatal outcomes (respiratory distress syndrome, patent ductus arteriosus, intraventricular hemorrhage, necrotizing enterocolitis, periventricular leukomalacia and bronchopulmonary dysplasia) were followed up according to the Vermont Oxford definition [21].

### 2.3. Statistical analysis

The study group was analyzed based on birth weight in 3 subgroups ( $\leq 1000$  g, 1001–1500 g and  $> 1500$  g). Data were expressed as the mean  $\pm$  standard deviation (SD). Student's *t*-test and paired samples *t*-test were used to compare independent variables as indicated. ANOVA test was used to compare SOS among subgroups at 6 and 12 months of corrected age (CA).  $P < 0.05$  was expressed as statistically significant. The analysis was performed with Statistical Package for Social Sciences (SPSS 26.0; SPSS Institute, Chicago, IL, USA).

## 3. Results

Overall, 153 preterm newborns were included. Characteristic of the study group is shown in Table 1. Mean tibial SOS at 6 months CA (SOS1) and 12 months CA (SOS2) was  $3004 \pm 123$  m/s and  $3253 \pm 109$  m/s, respectively (Fig. 1). Using paired samples test, there was a significant increase in tibial bone SOS between 2 time points

**Table 1**

Demographic data. Continuous data are presented as mean  $\pm$  SD. ANS = antenatal corticosteroids, RDS = respiratory distress syndrome, CPAP = continuous positive airway pressure, DOL = day of life, BPD = bronchopulmonary dysplasia, RAI = relative adrenal insufficiency, NEC = necrotizing enterocolitis, PDA = persistent ductus arteriosus, PIVH = peri/intraventricular hemorrhage, PVL = periventricular leukomalacia, LOS = late-onset sepsis.

Variable	N = 153
Gestational age, weeks	29.6 $\pm$ 2.5
Birth weight, grams	1309 $\pm$ 440
C-section delivery, no. (%)	123 (80.4%)
Male gender, no. (%)	85 (55.6%)
Small for gestational age, no. (%)	17 (11.1%)
Twin pregnancy, no. (%)	68 (44.4%)
ANS (completed), no. (%)	102 (66.7%)
RDS, no. (%)	128 (83.7%)
CPAP, no. (%)	126 (82.4%)
Invasive ventilation, no. (%)	53 (34.6%)
Oxygen at DOL 28, no. (%)	38 (24.8%)
Respiratory support at 36 weeks, no. (%)	13 (8.5%)
Corticosteroids for BPD, no. (%)	25 (16.3%)
Hydrocortisone for RAI, no. (%)	19 (12.4%)
NEC, no. (%)	2 (1.3%)
PDA > 2 mm (over 72 h), no. (%)	32 (20.9%)
PDA treatment, no. (%)	7 (4.6%)
Hypotension (first 72 h), no. (%)	18 (11.8%)
PIVH grade III-IV, no. (%)	5 (3.3%)
PVL, no. (%)	2 (1.3%)
LOS, no. (%)	16 (10.5%)
Parenteral nutrition, days	8 $\pm$ 6.7
Weight at discharge, grams	2224 $\pm$ 486
Enteral feeding at discharge – human milk, no. (%)	96 (62.7%)
Oxygen at discharge, no. (%)	9 (5.9%)

( $249 \pm 136$  m/s), with  $p = 0.001$ . Moreover, when comparing SOS and three BW categories, there was a significant difference ( $p = 0.045$ ) in SOS1 measurements among groups, whereas SOS2 results were not significant ( $p = 0.289$ ) (Table 2). Remarkably, preterm newborns with the lowest birth weight ( $\leq 1000$  g category) scored the highest SOS at both 6 and 12 months CA. On the contrary, infants with BW  $> 1500$  g had the lowest SOS at both time points (Fig. 2).

## 4. Discussion

Our results showcase a significant rise in tibial bone SOS in preterm infants between 6 and 12 months CA. This finding is in accordance with other researchers who documented steady increase in SOS after initial decline in both term and preterm infants [2,4,13,15,16].

We found significant differences in SOS values among preterm infants of different birth weight categories ( $\leq 1000$  g, 1001–1500 g and  $> 1500$  g subgroups) at 6 months CA. Similarly, substantial difference was already perceived between term (higher birth weight) and preterm (lower birth weight) infants [2,16]. These studies also supported our SOS results at 12 months CA when no significant difference among BW subgroups was found [2,16]. This phenomenon is probably influenced by rapid catch-up in SOS in preterm infants following the nadir at approximately 2–4 months of age [3,4,12,14,15].

However, our study shows the highest SOS values at both time points in the “smallest” infants (BW  $\leq 1000$  g). We revealed the inverse correlation between birth weight and SOS at both 6 and 12 months CA.

There could be a number of reasons for such findings. As the MBD of prematurity develops around 6–16 weeks postnatally, the “smallest” newborns (BW  $\leq 1000$  g) show signs of the disease already during the hospitalization [9]. Consequently, treatment can be commenced in time [4]. Furthermore, complex physiotherapy (during hospitalization and continuing post-discharge) can reduce the burden of MBD [22]. Finally, these infants have more follow-up visits and specific planned interventions.

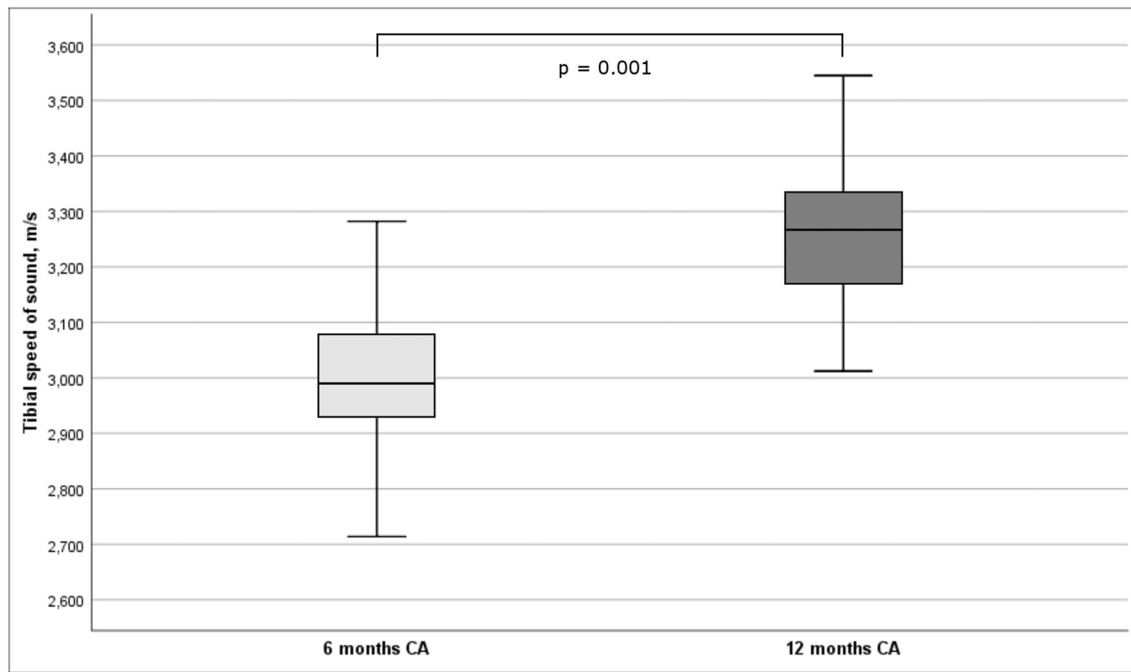


Fig. 1. Tibial speed of sound distribution within the study period. Significant difference between speed of sound at 6 and 12 months of corrected age (CA).

Table 2

Tibial speed of sound among birth weight categories during the first year of life. Continuous data are presented as mean ± SD. CA = corrected age.

Parameter	BW ≤ 1000 g (n = 41)	BW 1001 - 1500 g (n = 72)	BW > 1500 g (n = 40)	ANOVA test
SOS 1, m/s (6 months CA)	3033 ± 105	3009 ± 121	2966 ± 138	p = 0.045
SOS 2, m/s (12 months CA)	3274 ± 110	3251 ± 104	3236 ± 115	p = 0.289

In contrast, preterm infants with higher GA and BW (especially > 1500 g) are usually deemed as a “low-risk” group with shorter duration of hospitalization and less preventive measures [23]. Thus, MBD can

develop post-discharge and can be missed due to less complex follow-up of these patients. As a result, the initiation of treatment can be delayed leading to worse bone health status in infants with BW > 1500 g,

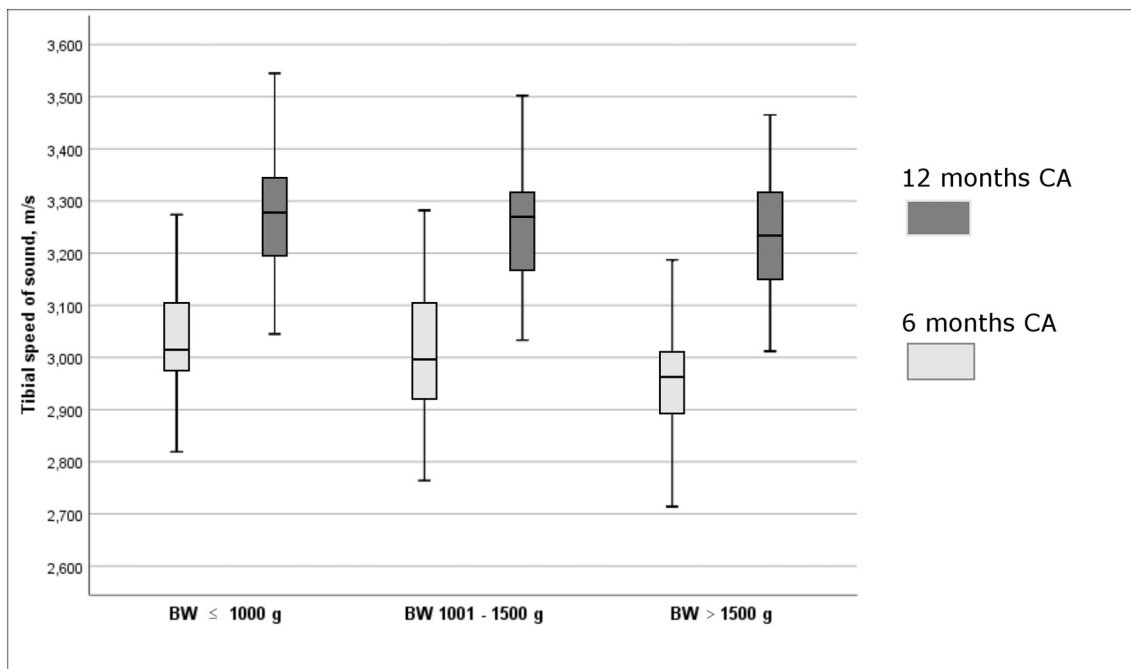


Fig. 2. Relation of tibial speed of sound to birth weight during the first year of life. BW = birth weight; SOS = speed of sound; CA = corrected age.



reflected by SOS values [4,24].

#### 4.1. Limitations

We performed only 2 SOS measurements and the SOS difference between BW groups at 6 months CA was borderline significant ( $p = 0.045$ ). Furthermore, we did not account for other variables, such as enteral supplements affecting bone status, chronic medication and type of enteral feeding.

#### 4.2. Conclusions

Tibial SOS measurement seems to be reliable non-invasive method in the assessment of bone status. The value of SOS correlates with birth weight and varies until 12 months of CA. We suggest the SOS measurement should be performed in all preterm infants with special consideration in infants with BW > 1500 g. Monitoring and accurate diagnosis of MBD are essential throughout follow-up.

#### Author contributions

*Zuzana Korčeková*: Conceptualization, Methodology, Data curation, Writing – Original draft preparation, Investigation. *Peter Korček*: Conceptualization, Methodology, Data curation, Writing – Original draft preparation, Formal Analysis. *Václav Čunát*: Data curation. *Zuzana Staníčková*: Investigation. *Patricia Zemanová*: Investigation. *Zbyněk Straňák*: Writing – Reviewing and Editing, Supervision.

#### Declaration of competing interest

None.

#### References

- [1] H.S. Lam, K.W. So, P.C. Ng, Osteopenia in neonates: a review, *HK J Paediatr* 12 (2) (2007) 118–124.
- [2] H.L. Chen, W.T. Lee, P.L. Lee, P.L. Liu, R.C. Yang, Postnatal changes in Tibial bone speed of sound of preterm and term infants during infancy, *PLoS One* 11 (11) (2016) e0166434.
- [3] H.L. Chen, H.I. Tseng, S.N. Yang, R.C. Yang, Bone status and associated factors measured by quantitative ultrasound in preterm and full-term newborn infants, *Early Hum. Dev.* 88 (8) (2012) 617–622.
- [4] H. McDevitt, C. Tomlinson, M.P. White, S.F. Ahmed, Changes in quantitative ultrasound in infants born at less than 32 weeks' gestation over the first 2 years of life: influence of clinical and biochemical changes, *Calcif. Tissue Int.* 81 (4) (2007) 263–269.
- [5] F. Rauch, E. Schoenau, The developing bone: slave or master of its cells and molecules? *Pediatr. Res.* 50 (3) (2001) 309–314.
- [6] D. Nemet, T. Dolfin, B. Wolach, A. Eliakim, Quantitative ultrasound measurements of bone speed of sound in premature infants, *Eur. J. Pediatr.* 160 (12) (2001) 736–740.
- [7] S. Viswanathan, W. Khasawneh, K. McNelis, C. Dykstra, R. Amstadt, D.M. Super, et al., Metabolic bone disease: a continued challenge in extremely low birth weight infants, *J. Parenter. Enter. Nutr.* 38 (8) (2014) 982–990.
- [8] S.L. Dahlenburg, N.J. Bishop, A. Lucas, Are preterm infants at risk for subsequent fractures? *Arch. Dis. Child.* 64 (10) (1989) 1384–1393.
- [9] S.E. Rustico, A.C. Calabria, S.J. Garber, Metabolic bone disease of prematurity, *J Clin Transl Endocrinol* 1 (3) (2015) 85–91.
- [10] H. McDevitt, S.F. Ahmed, Quantitative ultrasound assessment of bone health in the neonate, *Neonatology* 91 (1) (2007) 2–11.
- [11] J. Mercy, B. Dillon, J. Morris, A.J. Emmerson, M.Z. Mughal, Relationship of tibial speed of sound and lower limb length to nutrient intake in preterm infants, *Arch. Dis. Child. Fetal Neonatal Ed.* 92 (5) (2007) 381–385.
- [12] M.S. Fewtrell, K.L. Loh, S. Chomtho, K. Kennedy, J. Hawdon, A. Khakoo, Quantitative ultrasound (QUS): a useful tool for monitoring bone health in preterm infants? *Acta Paediatr.* 97 (12) (2008) 1625–1630.
- [13] L. Tong, J.S. Gopal-Kothandapani, A.C. Offiah, Feasibility of quantitative ultrasonography for the detection of metabolic bone disease in preterm infants - systematic review, *Pediatr. Radiol.* 48 (11) (2018) 1537–1549.
- [14] P. Roggero, M.L. Gianni, A. Orsi, P. Piemontese, O. Amato, S. Mora, et al., Postnatal "speed of sound" decline in preterm infants: an exploratory study, *J. Pediatr. Gastroenterol. Nutr.* 45 (5) (2007) 615–617.
- [15] X.P. Liao, W.L. Zhang, J. He, J.H. Sun, P. Huang, Bone measurements of infants in the first 3 months of life by quantitative ultrasound: the influence of gestational age, season, and postnatal age, *Pediatr. Radiol.* 35 (9) (2005) 847–853.
- [16] N. Tansug, S.A. Yildirim, E. Canda, D. Ozalp, O. Yilmaz, F. Taneli, B. Ersoy, Changes in quantitative ultrasound in preterm and term infants during the first year of life, *Eur. J. Radiol.* 79 (3) (2011) 428–431.
- [17] E. Ritschl, K. Wehmeijer, F. DE Terlizzi, E. Wipfler, R. Cadossi, D. Douma, et al., Assessment of skeletal development in preterm and term infants by quantitative ultrasound, *Pediatr. Res.* 58 (2) (2005) 341–346.
- [18] C. Land, E. Schoenau, Fetal and postnatal bone development: reviewing the role of mechanical stimuli and nutrition, *Best Pract Res Clin Endocrinol Metab* 22 (1) (2008) 107–118.
- [19] F. Rauch, E. Schoenau, Changes in bone density during childhood and adolescence: an approach based on bone's biological organization, *J. Bone Miner. Res.* 16 (4) (2001) 597–604.
- [20] T.R. Fenton, J.H. Kim, A systematic review and meta-analysis to revise the Fenton growth chart for preterm infants, *BMC Pediatr.* 13 (1) (2013) 59.
- [21] J.D. Horbar, The Vermont Oxford network: evidence-based quality improvement for neonatology, *Pediatrics* 103 (1) (1999) 350–359.
- [22] A. Eliakim, I. Litmanovitz, D. Nemet, The role of exercise in prevention and treatment of osteopenia of prematurity: an update, *Pediatr. Exerc. Sci.* 29 (4) (2017) 450–455.
- [23] Manuck TA, Rice MM, Bailit JL, Grobman WA, Reddy UM, Wapner RJ, et al. Preterm neonatal morbidity and mortality by gestational age: a contemporary cohort. *Am. J. Obstet. Gynecol.* 2016;215(1):103.e1–103.e14.
- [24] L.K. Chin, J. Doan, Y.S. Teoh, A. Stewart, P. Forrest, P.J. Simm, Outcomes of standardized approach to metabolic bone disease of prematurity, *J. Paediatr. Child Health* 54 (6) (2018) 665–670.

# Procalcitonin is more likely to be released by the fetus rather than placental tissue during chorioamnionitis

Zbynek Stranak<sup>a,b</sup>, Jaroslav Feyereisl<sup>a,b</sup>, Peter Korcek<sup>a,b</sup>, Simona Feyereislova<sup>a,b</sup>, Ladislav Krofta<sup>a,b</sup>

**Aims.** To analyze the relationship between maternal, cord blood and neonatal procalcitonin (PCT) levels in preterm deliveries with and without histologically proven chorioamnionitis (HCA).

**Methods.** 91 mother-infant pairs from 24+0 to 33+0 gestational weeks were analyzed. Procalcitonin was measured in all mothers within 24 hours before and subsequently in cord blood and in neonates within the first two hours after delivery. PCT levels were analysed in relationship to HCA and clinical outcome.

**Results.** HCA was confirmed in 28 cases (31%). We found no differences in PCT values between HCA positive and negative groups in maternal blood ( $0.1 \pm 0.1$  vs  $0.09 \pm 0.09$  ng/L,  $P = 0.76$ ). PCT values in cord blood and neonates were significantly higher in the HCA positive compared to HCA negative group ( $0.23 \pm 0.1$  vs  $1.2 \pm 2.7$  ng/L,  $P < 0.001$  and  $0.89 \pm 3.4$  vs  $4.2 \pm 9.3$  ng/L,  $P < 0.0001$  respectively). PCT values in neonates were significantly higher than those of cord blood. Levels were not influenced by the mode of delivery, gestational age or premature rupture of membranes. Chorioamnionitis was more frequently associated with early onset neonatal sepsis (36% in HCA group vs 5% in non HCA group,  $P < 0.0001$ ). Comparison of other clinical data revealed no differences between HCA positive and negative groups.

**Conclusion.** This study showed higher PCT in cord and neonatal blood in the presence of proven histological chorioamnionitis. The measurement of PCT in mothers' blood is not helpful for diagnosis of HCA. The changes in PCT values shown suggest its production and release by fetal tissue.

**Key words:** procalcitonin, preterm labor, intra-amniotic infection, early onset sepsis

Received: May 24, 2016; Accepted: July 29, 2016  
<http://dx.doi.org/10.5507/bp.2016.041>

<sup>a</sup>3<sup>rd</sup> Faculty of Medicine, Charles University in Prague, Czech Republic

<sup>b</sup>Institute for the Care of Mother and Child, Prague, Czech Republic

Corresponding author: Peter Korcek, e-mail: [peterkorcek.upmd@gmail.com](mailto:peterkorcek.upmd@gmail.com)

## INTRODUCTION

Preterm birth represents a serious challenge for perinatal medicine which is reflected in its contribution to over 70% of perinatal mortality in developed countries. In addition, surviving infants frequently suffer from cardio-respiratory problems, mental retardation, cerebral palsy, and vision and hearing impairment<sup>1</sup>.

The most common cause of preterm birth is chorioamnionitis which is implicated in the majority of extremely preterm births. Chorioamnionitis is often asymptomatic and clinical signs lack both sensitivity and specificity – over one third of women with these signs do not have histological evidence of placental inflammation as other causes may produce similar clinical features to chorioamnionitis<sup>2,3</sup>.

Chorioamnionitis can occur without microbiologically-proven amniotic fluid infection in over half of the cases. However, released endotoxins and exotoxins possibly by bacteria colonizing the choriodecidual space initiate production of inflammatory cytokines provoking the maternal and fetal inflammatory response syndrome<sup>4</sup>.

Procalcitonin (PCT) is a peptide pro-hormone of calcitonin, physiologically produced by the thyroid gland. In response to endotoxin and inflammatory cytokines, PCT can be produced by monocytes and other organs<sup>2,5</sup>.

In contrast to C-reactive protein (CRP), PCT reflects the onset and resolution of the inflammatory process more accurately. Thus, PCT may be more useful than CRP in the early diagnosis of infection and monitoring of the disease<sup>2,3</sup>.

For this reason, PCT plays an important role in the diagnosis of neonatal sepsis despite the fact that it may be elevated in non-infected infants with other complications<sup>2</sup>. PCT is also increased in cord blood of chorioamnionitis-affected newborns. Furthermore, the measurement of PCT in the maternal blood remains controversial in the diagnosis of intra-amniotic infection and chorioamnionitis<sup>5,6</sup>.

The aim of our study was to investigate the relationship between histologically proven chorioamnionitis and maternal, umbilical and neonatal PCT levels.

## MATERIALS AND METHODS

This retrospective study was approved by the Local Ethics Committee and the Local Committee on Human Research. Inclusion criteria were: preterm delivery at 24+0 to 33+0 weeks of gestation, patients born in our perinatal centre, completed measurements of the inflammatory parameters in the mother within 24 h before de-

livery, completed measurement of procalcitonin (PCT) in the newborn within 2 h after delivery, completed measurement of procalcitonin in the cord blood and completed histological examination of the placenta. Excluded were all patients with incomplete biochemical, haematological and histological investigations, patients with severe congenital anomalies, patients who required resuscitation at the delivery room and patients with unknown outcome. Between January 2005 and December 2014, 91 mother-infant pairs were eligible for the study.

### Blood sampling and tests

Blood samples for the assessment of PCT, C-reactive protein (CRP) and white blood count (WBC) were taken from the mother within 24 hours before preterm delivery (venous blood) and subsequently from the newborn within the first two hours after delivery (venous or arterial blood). Cord blood was obtained immediately after delivery from the umbilical vein. Blood counts were measured with a Coulter Micro Dif II (Coulter Electronics Ltd., Fullerton, US) and CRP was measured by turbidimetry (SLT Spectra, Austria). Immunoluminometric assay (Lumitest PCT, Brahms, Germany) was used for PCT analysis. Luminescence was measured automatically in a Berilux Analyser (Behring Diagnostics, Germany).

### Clinical and histological chorioamnionitis

Clinical chorioamnionitis was defined using criteria proposed by Gibbs<sup>7</sup>: body temperature  $\geq 37.8$  °C and a minimum of two other criteria: maternal or fetal tachycardia, uterine tenderness, malodorous vaginal discharge and leucocytosis  $\geq 15\ 000\ \text{mm}^{-3}$ . Histologically proven chorioamnionitis was defined by the presence of at least one inflammatory change in the placenta (intervillositis, deciduitis, or villositis), in membranes (amnionitis, deciduitis, or chorioamnionitis), or in the umbilical cord (funiculitis).

### Postnatal data

Data were collected from the patient medical records. The definition of early-onset sepsis was based on the criteria proposed by Chiesa<sup>6</sup> (neonates with a positive blood culture and clinical signs of infection and/or neonates with negative blood culture, clinical signs of infection and positive sepsis screen). Other neonatal outcomes (respiratory distress syndrome, patent ductus arteriosus,

intraventricular hemorrhage, necrotizing enterocolitis, periventricular leukomalacia and bronchopulmonary dysplasia) were followed up according to the Vermont-Oxford definition<sup>8</sup>.

### Statistical analysis

Data are reported using descriptive statistical methods. Univariate analyses were performed using Chi-square, Fisher's exact and Mann-Whitney U tests. All reported *P*-values are two-sided and not adjusted for multiplicity. *P* < 0.05 was considered statistically significant. Data analysis was performed using the IBM SPSS Statistics 23.0.0.0 software (IBM Corp., Armonk, NY).

## RESULTS

The study population consisted of 91 mother-infant pairs. The mean gestational age of the study group was 28.9 weeks (range 24 – 33 weeks). Premature preterm rupture of membranes (PPROM) was recorded in 50 cases (55%) with average duration 24 h (range 2 – 136 hrs). No case of clinical chorioamnionitis was found. In contrast, histological chorioamnionitis was confirmed in 28 cases (31%).

### Diagnosis of chorioamnionitis from maternal blood

We found no significant differences in procalcitonin values between histologically chorioamnionitis positive and negative groups in maternal blood. The measurement of WBC and CRP was more accurate in detection of sub-clinical chorioamnionitis. The incidence of chorioamnionitis was not influenced by the PPRM. The results are shown in Table 1.

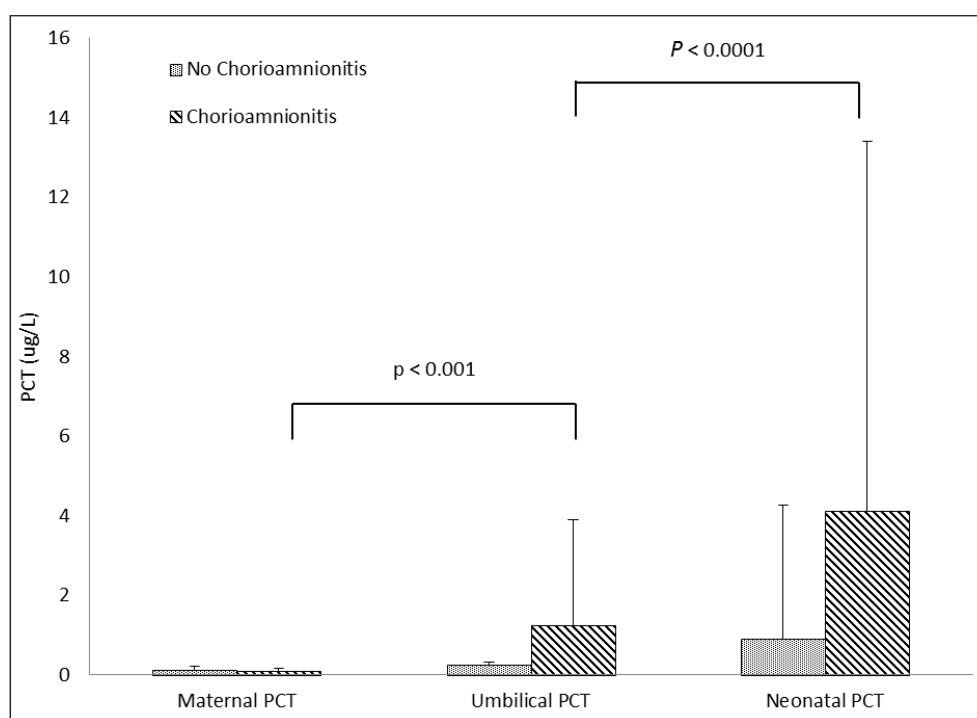
### PCT value in the diagnosis of chorioamnionitis

The measurement of PCT in maternal blood disclosed very low PCT values and there was no difference between “chorioamnionitis“ and “no chorioamnionitis“ groups. The comparison of PCT level in cord blood revealed the association with chorioamnionitis (no chorioamnionitis:  $0.23 \pm 0.1\ \text{ug/L}$  vs.  $1.2 \pm 2.7\ \text{ug/L}$  in chorioamnionitis group, *P* < 0.0001). PCT values were significantly raised and higher in preterm neonates following pregnancies complicated by chorioamnionitis. The changes of PCT values in maternal, cord and neonatal blood are demonstrated in Fig. 1.

**Table 1.** Maternal inflammatory parameters in study population and as per study group (no chorioamnionitis versus histologically proven chorioamnionitis).

	Study group (n=91)	No chorioamnionitis group (n=63)	Chorioamnionitis group (n=28)	<i>P</i>
WBC count (x1000/uL) mean + (95%CI)	13.8 (13.0-14.6)	13.1 (12.2-14.0)	16.0 (14.6-17.5)	0.001
C-reactive protein (mg/L) mean + (95%CI)	17.5 (11.8-23.2)	8.4 (4.9-11.9)	38.8 (24.0-53.6)	0.0001
Procalcitonin (ug/L) mean + (95%CI)	0.10 (0.07-0.12)	0.1 (0.07-0.13)	0.09 (0.05-0.11)	0.76

Data are presented as means (lower and upper bound 95% Confidence Interval). Statistically significant difference *P*<0.05



**Fig. 1.** The changes of PCT values in maternal, cord and neonatal blood. Mean values and positive standard deviations are shown by study group (“no chorioamnionitis” versus “chorioamnionitis”). Statistically significant difference  $P < 0.05$ .

### Chorioamnionitis and neonatal outcome

We found a strong association between chorioamnionitis and the occurrence of early onset sepsis. Preterm infants following chorioamnionitis had delayed postnatal transition and more frequent administration of antibiotics. There were no differences in other neonatal parameters. Neonatal morbidity and mortality are shown in Table 2.

### DISCUSSION

Despite the progress in perinatal medicine, histological chorioamnionitis (HCA) remains a leading cause of preterm birth. Rapid diagnosis and management of HCA

are essential<sup>9-11</sup>. Unfortunately, clinical signs of HCA and microbiological assessment of the amniotic fluid appear to be unreliable diagnostic criteria<sup>2,3</sup>.

We investigated the role of procalcitonin (PCT) measurement in diagnosing HCA. Unfortunately, no significant difference in the maternal PCT values was found between the HCA positive and negative group. This finding is in accord with some recently published data showing that measurement of PCT in maternal blood is unreliable in the clinical diagnosis of chorioamnionitis<sup>2</sup>. Despite conflicting evidence, our study showed significant elevation in maternal WBC and CRP in the chorioamnionitis positive group<sup>12,13</sup>.

In our study, PCT was elevated in umbilical cord

**Table 2.** Neonatal outcome in chorioamnionitis positive and chorioamnionitis negative groups. Statistically significant difference  $P < 0.05$  (expressed between “no chorioamnionitis” and “chorioamnionitis” group).

	Chorioamnionitis (N=28)	No chorioamnionitis (n=63)	<i>P</i>
Gestational age (weeks), mean $\pm$ SD	28.5 $\pm$ 2.5	29.1 $\pm$ 2.4	0.35
Birth weight (g), mean $\pm$ SD	1188 $\pm$ 402	1266 $\pm$ 351	0.52
Apgar at 5 minutem mean $\pm$ SD (95% CI)	7.9 $\pm$ 1.1 (7.5-8.4)	8.5 $\pm$ 1.0 (8.2-8.8)	0.01
Respiratory distress syndrome, n (%)	20 (71)	32 (51)	0.12
Early onset sepsis, n (%)	10 (36)	3 (5)	0.0001
Use of antibiotics, n (%)	20 (71)	31 (49)	0.05
Patent ductus arteriosus, n (%)	7 (25)	13 (21)	0.64
Intraventricular haemorrhage grade III and IV, n (%)	3 (10)	3 (5)	0.15
Bronchopulmonary dysplasia, n (%)	7 (25)	10 (16)	0.30
Necrotizing enterocolitis, n (%)	2 (7)	2 (3)	0.39
Periventricular leukomalacia, n (%)	2 (7)	2 (3)	0.39
Survival, n (%)	27 (96)	62 (98)	0.56



1 blood at the time of delivery in the HCA group. This is  
2 in accordance with some published data<sup>2,3</sup>. Howman et al  
3 observed a modest increase of inflammatory markers in  
4 the maternal and cord blood in pregnancies complicated  
5 by histological chorioamnionitis<sup>2</sup>. Su et al found PCT to  
6 be a relatively good rule-in and rule-out marker for pre-  
7 diction of neonatal sepsis<sup>3</sup>. One study reported elevated  
8 cord blood levels of PCT as an independent risk factor  
9 for mortality in preterm populations less than 33 weeks  
10 gestation<sup>14</sup>.

11 We confirmed significantly elevated PCT in the in-  
12 fants of mothers with HCA. These newborns also had  
13 increased risk for early-onset sepsis and delayed postnatal  
14 adaptation. Moreover, there was an insignificant increase  
15 in the incidence of respiratory distress syndrome (RDS)  
16 and bronchopulmonary dysplasia (BPD). Park et al asso-  
17 ciated mild to moderate HCA in preterm population with  
18 a decrease in RDS. We did not find such association per-  
19 haps due to the lack of appropriate number of patients<sup>14,15</sup>.

20 The strength of our study is the measurement of PCT  
21 in mother-infant pair which allowed us to evaluate the  
22 PCT changes in maternal, placental (umbilical) and neo-  
23 natal circulation. Serial PCT measurements revealed that  
24 PCT values were significantly different and varied accord-  
25 ing to HCA presence or absence. Undetectable PCT val-  
26 ues in maternal circulation in combination with positive  
27 PCT values in umbilical cord blood as well as the neonatal  
28 circulation support the hypothesis that PCT is produced  
29 by fetal tissues as a result of the fetal inflammatory re-  
30 sponse syndrome during chorioamnionitis<sup>16</sup>.

31 There is an apparent gradual rise of PCT in the par-  
32 ticular compartments in mother-infant pairs with histo-  
33 logical CHA. Coupled with other laboratory markers of  
34 infection, neonatal serial PCT measurements in at-risk  
35 infants can be quite a strong predictor of their morbidities,  
36 specifically early-onset sepsis<sup>15</sup>.

37 There are several limitations to the study: the relatively  
38 small size and unbalanced patient groups (28 mother-in-  
39 fant pairs in CHA-positive group and 63 in CHA-negative  
40 group), the data were analysed retrospectively. Maternal  
41 PCT values were obtained at various timepoints within 24  
42 hours before delivery, which may have an impact on the  
43 comparison of maternal and cord blood values. PCT can  
44 also be increased in non-infected infants with other com-  
45 plications (intracranial haemorrhage, respiratory distress  
46 syndrome and perinatal asphyxia) (ref.<sup>2</sup>). Furthermore,  
47 PCT shows a physiological increase in the first few days  
48 of life, which complicates the interpretation of results<sup>3</sup>.

49

50

## 51 CONCLUSION

52

53 This study confirmed the helpful role of PCT mea-  
54 surement in cord and neonatal blood in the presence of  
55 proven histological chorioamnionitis. The measurement  
56 of PCT in mothers' blood does not seem useful in the  
57 diagnosis of subclinical chorioamnionitis. More studies  
58 are needed to confirm the possible release of PCT from  
59 fetus during chorioamnionitis.

60

**Acknowledgement:** This study was supported by the  
Research Project PRVOUK 32, Charles University,  
Prague.

**Author contributions:** ZS, JF: these authors contributed  
equally to this work - substantial contributions to concep-  
tion and design, acquisition, analysis and interpretation of  
the data; PK: drafted and reviewed the article, performed  
data mining; LK: final approval.

**Conflict of interest statement:** The authors state that there  
are no conflicts of interest regarding the publication of  
this article.

## REFERENCES

- Galinsky R, Polglase GR, Hooper SB et al. The consequences of chorioamnionitis: preterm birth and effects on development. *J Pregnancy* 2013; Article ID 412831
- Howman RA, Charles AK, Jacques A, Doherty DA, Simmer K, Strunk T, Richmond PC, Cole CH, Burgner DP. Inflammatory and haematological markers in the maternal, umbilical cord and infant circulation in histological chorioamnionitis. *PLoS One* 2012;7(12):e51836.
- Su H, Chang SS, Han CM, Wu KY, Li MC, Huang CY, Lee CL, Wu JY, Lee CC. Inflammatory markers in cord blood or maternal serum for early detection of neonatal sepsis-a systemic review and meta-analysis. *J Perinatol* 2014;34(4):268-74.
- Spinillo A, Iacobone AD, Calvino IG, Alberi I, Gardella B. The role of the placenta in fetoneonatal infections. *Early Hum Dev* 2014;90(S1):S7-9.
- Thornburg LL, Queenan R, Brandt-Griffith B, Pressman EK. Procalcitonin for prediction of chorioamnionitis in preterm premature rupture of membranes. *J Matern Fetal Neonatal Med* 2016;29(13):2056-61.
- Chiesa C, Panero A, Rossi N, Stegagno M, De Giusti M, Osborn JF, Pacifico L. Reliability of procalcitonin concentrations for the diagnosis of sepsis in critically ill neonates. *Clin Infect Dis* 1998;26(3):664-72.
- Gibbs RS, Blanco JD, St Clair PJ, Castaneda YS. Quantitative bacteriology of amniotic fluid from women with clinical intra-amniotic infection at term. *J Infect Dis* 1982; 145(1):1-8.
- Horbar JD. The Vermont Oxford Network: evidence-based quality improvement for neonatology. *Pediatrics* 1999;103(1):350-9.
- Nasef N, Shabaan AE, Schurr P, Iaboni D, Choudhury J, Church P, Dunn MS. Effect of clinical and histological chorioamnionitis on the outcome of preterm infants. *Am J Perinatol* 2013;30(1):59-68.
- Kim CJ, Romero R, Chaemsathong P, Chaiyasit N, Yoon BH, Kim YM. Acute chorioamnionitis and funisitis: definition, pathologic features, and clinical significance. *Am J Obstet Gynecol* 2015;213(S4):S29-52.
- Fishman SG, Gelber SE. Evidence for the clinical management of chorioamnionitis. *Semin Fetal Neonatal Med* 2012; 17(1):46-50.
- Trochez-Martinez RD, Smith P, Lamont RF. Use of C-reactive protein as a predictor of chorioamnionitis in preterm prelabour rupture of membranes: a systematic review. *BJOG* 2007;114(7):796-801.
- Stepan M, Cobo T, Musilova I, Hornychova H, Jacobsson B, Kacerovsky M. Maternal Serum C-Reactive Protein in Women with Preterm Prelabour Rupture of Membranes. *PLoS One* 2016;11(3):e0150217.
- Lautridou A, Ancel PY, Launay E, Denizot S, Orsonneau JL, Roze JC, Gras-Le Guen C. Umbilical cord blood procalcitonin as a risk factor for mortality in very premature infants. *Eur J Clin Microbiol Infect Dis* 2012;31(9):2407-12.
- Altunhan H, Annagur A, Ors R, Mehmetoglu I. Procalcitonin measurement at 24 hours of age may be helpful in the prompt diagnosis of early-onset neonatal sepsis. *International Journal of Infectious Diseases* 2011;15:e854-e858.
- Linscheid P, Seboek D, Nysten ES, Langer I, Schlatter M, Keller U, Becker KL, Müller B. In vitro and in vivo calcitonin-I gene expression in parenchymal cells: a novel product of human adipose tissue. *Endocrinol* 2003;144, 5578-84.

# Congenital *Lactobacillus* Blood Stream Infection in Extremely Preterm Twins

Peter Korček<sup>1,2</sup> · Zbyněk Straňák<sup>1,2</sup> · Václav Čunát<sup>1</sup>

Received: 4 December 2015 / Accepted: 26 April 2016 / Published online: 13 May 2016  
© Dr. K C Chaudhuri Foundation 2016

*To the Editor:* *Lactobacillus* spp. blood stream infection is extremely rare in children and is predominantly described in the adult population [1]. Only a few reports exist regarding neonatal *Lactobacillus* infection.

A 31-y-old woman with preterm dichorionic diamniotic twins was admitted due to the rupture of membranes. Tocolytics, antenatal corticosteroids and antibiotics were administered in view of chorioamnionitis (patient history, elevated C-reactive protein). Inflammatory markers escalated despite treatment and failed tocolysis led to cesarean section at 24 + 5 wk gestational age. Both infants suffered from severe respiratory distress syndrome and required prolonged ventilatory support. The infants were started on Penicillin and Gentamicin, however, no serious signs of sepsis were observed and the blood sample at admission revealed no significant elevation of inflammatory markers. Nevertheless, blood cultures were positive for *Lactobacillus* spp. The infants were treated successfully with antibiotics for seven days and post-treatment blood cultures were negative. The infants' outcome was favourable without any serious adverse events.

The main risk factors for *Lactobacillus* infection appear to be immunodeficiency, severe underlying disease, invasive lines or prolonged ineffective antibiotic treatment [1]. Although congenital *Lactobacillus* infection is uncommon

and has been reported previously, this complication has not been yet described in extremely preterm twins.

In our case, the twins' blood cultures at admission were positive for *Lactobacillus* spp. Interestingly, the inflammatory response in infants was minimal including the twin A, where histological chorioamnionitis was confirmed. The infection transmission remains unclear as we were unable to cultivate *Lactobacillus* spp. from any other site (neonatal, placental and cervicovaginal swabs). However, the contamination was considered unlikely as blood cultures were obtained by two skilled neonatologists in a tertiary center.

Cultured from blood stream using sterile technique, *Lactobacillus* should be recognized as a serious pathogen regardless of mild clinical and laboratory findings, especially in extremely preterm infants [2, 3]. We can speculate about different outcome in our patients if the optimal antibiotic treatment was not given.

## Compliance with Ethical Standards

**Conflict of Interest** None.

**Source of Funding** None.

## References

1. Salminen MK, Rautelin H, Tynkkynen S, et al. *Lactobacillus* bacteremia, clinical significance, and patient outcome, with special focus on probiotic *L. rhamnosus* GG. Clin Infect Dis. 2004. doi:10.1086/380455.
2. Thompson C, McCarter YS, Krause PJ, Herson VC. *Lactobacillus acidophilus* sepsis in a neonate. J Perinatol. 2001;21:258–60.
3. Sadowska-Krawczenko I, Paprzycka M, Korbal P, et al. *Lactobacillus rhamnosus* GG suspected infection in a newborn with intrauterine growth restriction. Benef Microbes. 2014;5:397–402.

✉ Zbyněk Straňák  
z.stranak@seznam.cz

<sup>1</sup> Fetal Medicine Center, Institute for the Care of Mother and Child, Podolské nábřeží, 157 Prague, Czech Republic

<sup>2</sup> Third Faculty of Medicine, Charles University, Prague, Czech Republic