

# Přílohy

Seznam příloh:

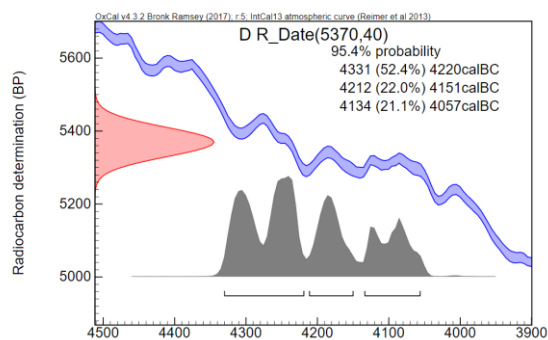
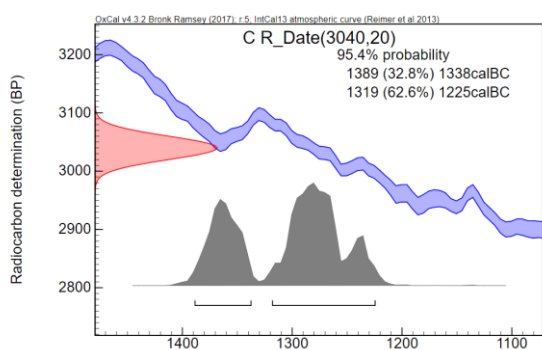
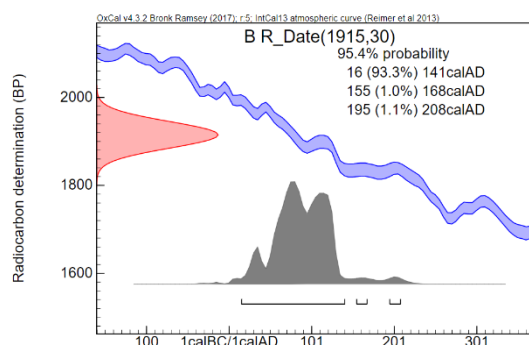
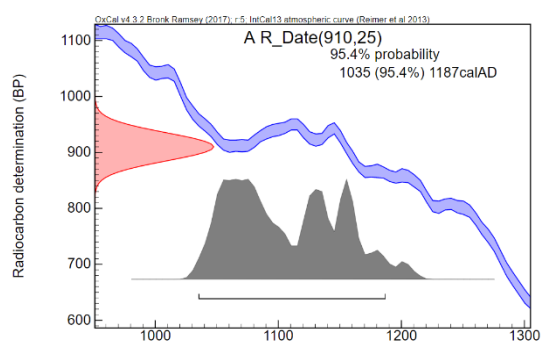
Příloha 1: výsledné kalibrační diagramy 11 radiokarbonově datovaných vrstev

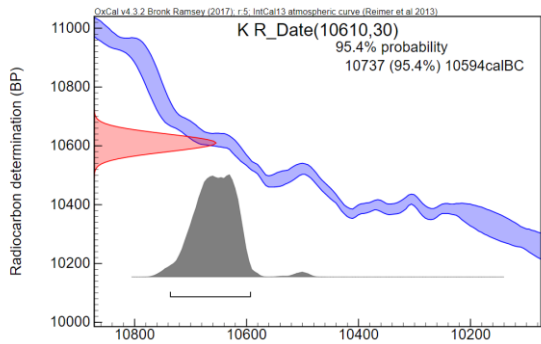
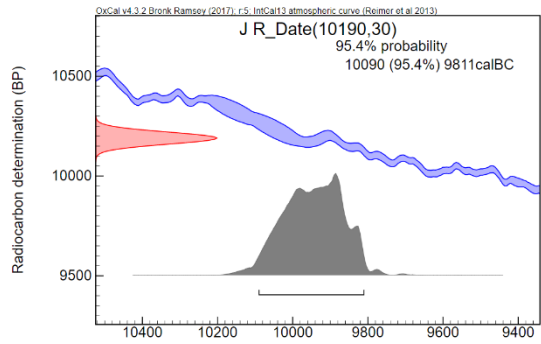
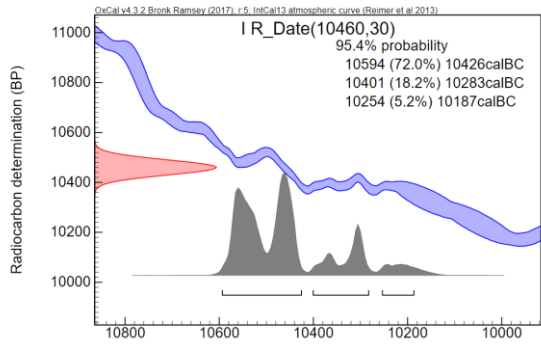
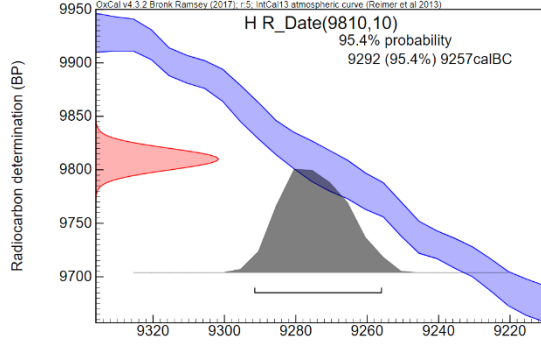
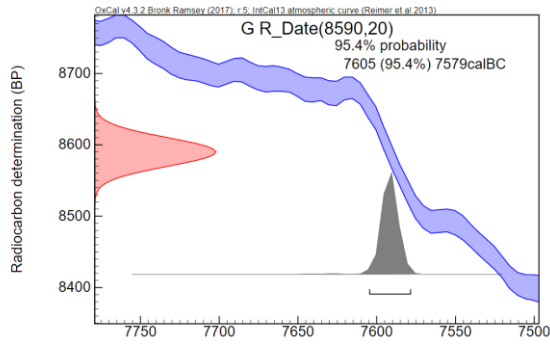
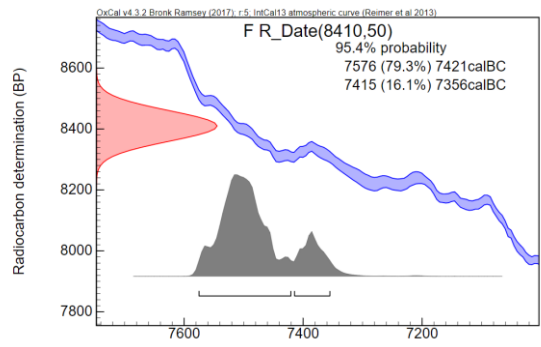
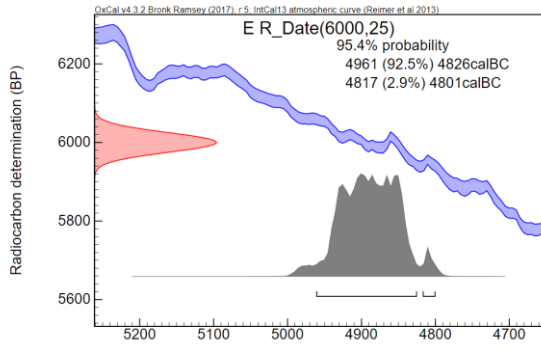
Příloha 2: Výstup metody Binary splitting by information content provedené v programu Psimpoll

Příloha 3: Vybrané fotografie hlavových kapsul pakomárů ze světelného mikroskopu (zvětšení 100x)

Příloha 4: Počítací komůrka

## Příloha 1: výsledné kalibrační diagramy 11 radiokarbonově datovaných vrstev





## Příloha 2: Výstup metody Binary splitting by information content provedené v programu Psimpoll

Zonation: binary splitting by information content into 10 zones

Square-root transformation

(a) residual variance

(b) variance with n zones as % of total

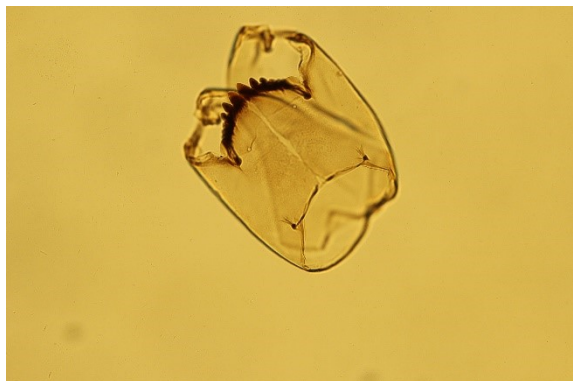
(c) variance reduction (% of total) from n - 1 zones to n zones

(d) variance reduction (% of n - 1 zones) from n - 1 zones to n zones

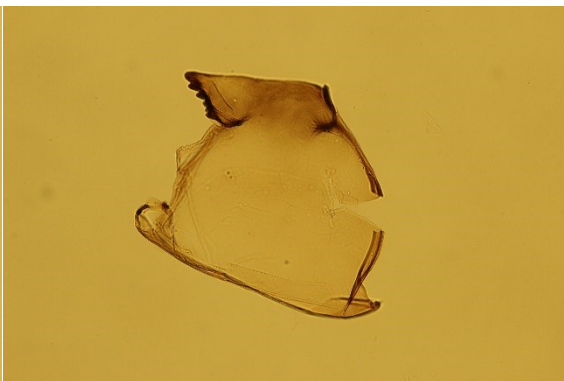
10 zones selected: numbers of samples per zone are: 3 7 7 7 6 2 1 2 2 1

n	(a)	(b)	(c)	(d)	markers									
1	60.8285	1.0000	-											
2	42.3481	0.6962	0.3038*	0.6962	1994.750									
3	36.6228	0.6021	0.0941*	0.8648	1953.000	994.750								
4	32.9958	0.5424	0.0596	0.9010	1953.000	977.250	1994.750							
5	29.8580	0.4909	0.0516	0.9049	1953.000	977.250	1986.000	1994.750						
6	26.8911	0.4421	0.0488	0.9006	1953.000	1977.250	1986.000	1994.750	1996.250					
7	23.7964	0.3912	0.0509	0.8849	1953.000	1977.250	1986.000	1994.750	1996.250	1997.250				
8	21.3639	0.3512	0.0400	0.8978	1953.000	1977.250	1986.000	1994.750	1996.250	1997.250	1998.250			
9	19.1373	0.3146	0.0366	0.8958	1953.000	1977.250	1986.000	1994.750	1995.750	1996.250	1997.250	1998.250		
10	17.6519	0.2902	0.0244	0.9224	1953.000	1965.750	1977.250	1986.000	1994.750	1995.750	1996.250	1997.250	1998.250	

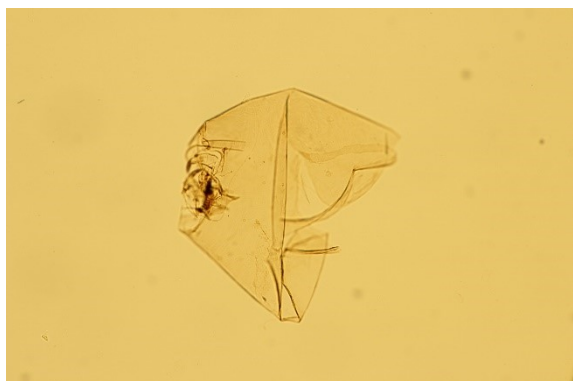
**Příloha 3: Vybrané fotografie hlavových kapsul pakomárů ze světelného mikroskopu  
(zvětšení 100x)**



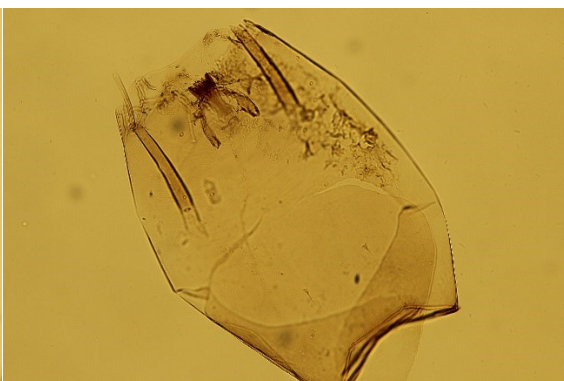
*Heterotrissocladius grimshawii*-type



*Heterotrissocladius marcidus*-type



*Procladius* sp.



*Zavreliomyia*-type A



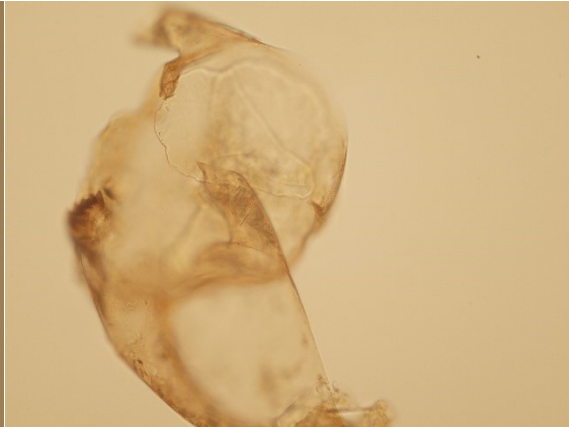
*Micropsectra radialis*-type (juvenil)



*Micropsectra radialis*-type



*Tanytarsus*-type Poland



*Tanytarsus*-type Poland

#### **Příloha 4: Počítací komůrka**

