

## 10. PŘÍLOHY

Vybrané tabulky ukazující statistiky v oblasti dětské práce s ohledem na druh práce, věk dětí, region, pohlaví, národní důchod, či sektor vykonávané práce.

**Table 1. Children in employment, child labour and hazardous work, 5-17 years age group, 2000-2012**

		Children in employment		Child labour		Hazardous work	
		('000)	%	('000)	%	('000)	%
<b>World</b>	2000	351,900	23.0	245,500	16.0	170,500	11.1
	2004	322,729	20.6	222,294	14.2	128,381	8.2
	2008	305,669	19.3	215,209	13.6	115,314	7.3
	<b>2012</b>	<b>264,427</b>	<b>16.7</b>	<b>167,956</b>	<b>10.6</b>	<b>85,344</b>	<b>5.4</b>

**Table 3. Children in employment, child labour and hazardous work by region, 5-17 years age group, 2008 and 2012**

Region		Children population		Children in employment		Child labour		Hazardous work	
		('000)		('000)	%	('000)	%	('000)	%
<b>Asia and the Pacific</b>	2008	853,895	174,460	20.4	113,607	13.3	48,164	5.6	
	<b>2012</b>	<b>835,334</b>	<b>129,358</b>	<b>15.5</b>	<b>77,723</b>	<b>9.3</b>	<b>33,860</b>	<b>4.1</b>	
<b>Latin America and the Caribbean</b>	2008	141,043	18,851	13.4	14,125	10.0	9,436	6.7	
	<b>2012</b>	<b>142,693</b>	<b>17,843</b>	<b>12.5</b>	<b>12,505</b>	<b>8.8</b>	<b>9,638</b>	<b>6.8</b>	
<b>Sub-Saharan Africa</b>	2008	257,108	84,229	32.8	65,064	25.3	38,736	15.1	
	<b>2012</b>	<b>275,397</b>	<b>83,570</b>	<b>30.3</b>	<b>59,031</b>	<b>21.4</b>	<b>28,767</b>	<b>10.4</b>	

**Table 4. Children in employment, child labour and hazardous work by sex, 5-17 years age group, 2000-2012**

Sex		Children in employment		Child labour		Hazardous work	
		('000)	%	('000)	%	('000)	%
<b>Boys</b>	2000	184,200	23.4	132,200	16.8	95,700	12.2
	2004	171,150	21.3	119,575	14.9	74,414	9.3
	2008	175,777	21.4	127,761	15.6	74,019	9.0
	<b>2012</b>	<b>148,327</b>	<b>18.1</b>	<b>99,766</b>	<b>12.2</b>	<b>55,048</b>	<b>6.7</b>
<b>Girls</b>	2000	167,700	22.5	113,300	15.2	74,800	10.0
	2004	151,579	19.9	102,720	13.5	53,966	7.1
	2008	129,892	16.9	87,508	11.4	41,296	5.4
	<b>2012</b>	<b>116,100</b>	<b>15.2</b>	<b>68,190</b>	<b>8.9</b>	<b>30,296</b>	<b>4.0</b>

**Table 6. Child labour distribution by level of national income, 5-17 years age group, 2012**

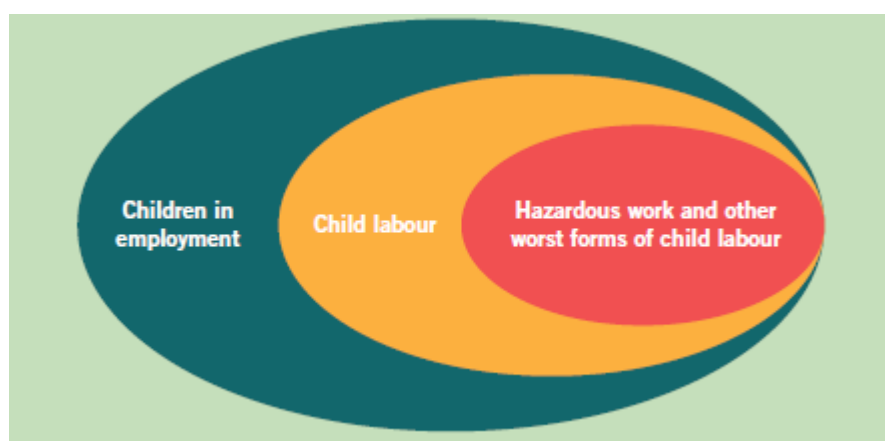
National income category	Total children	Child labour	Child labour
	('000)	('000)	(%)
Low income	330,257	74,394	22.5
Lower middle income	902,174	81,306	9.0
Upper middle income	197,977	12,256	6.2

**Table 7. Sectoral distribution of child labour, number and percentage share, 5-17 years age group, 2008 and 2012**

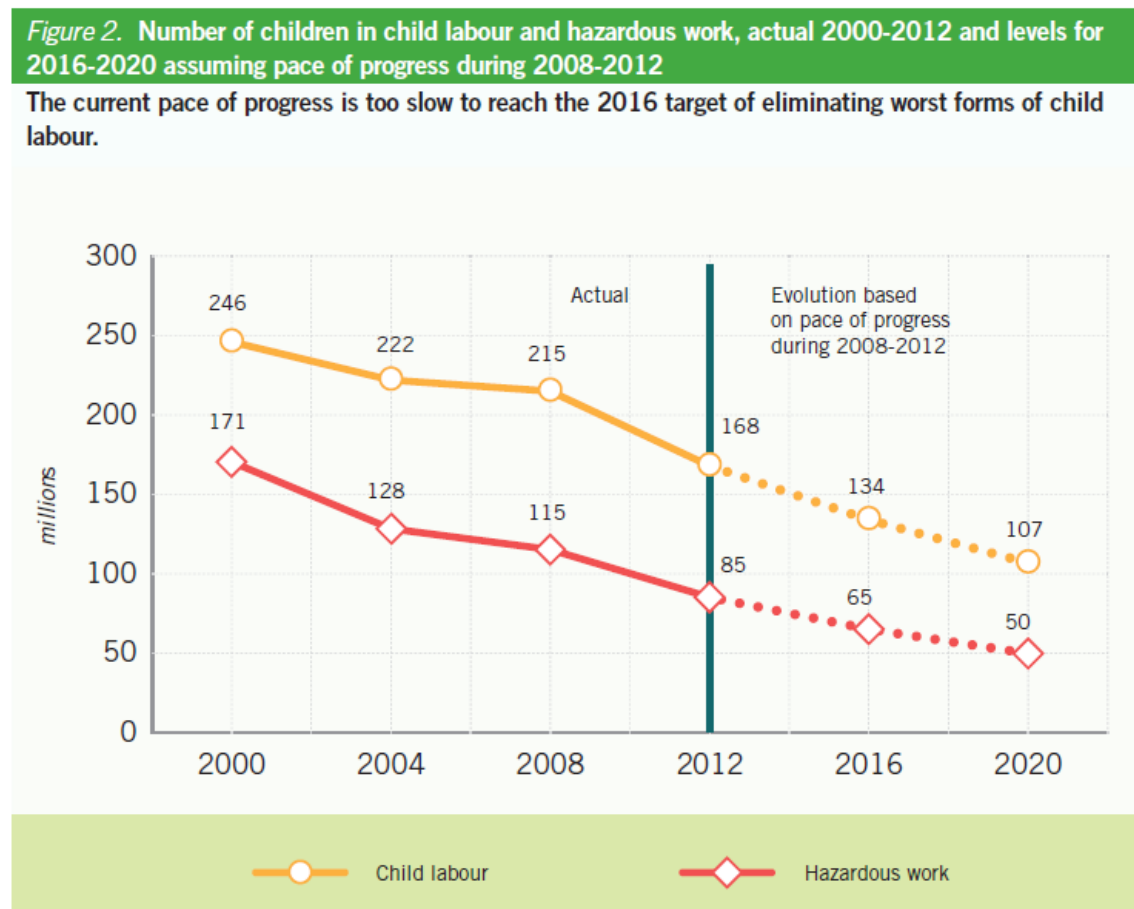
Sector <sup>(a)</sup>	2008		2012	
	('000)	% share	('000)	% share
Agriculture	129,161	60.0	98,422	58.6
Industry	15,068	7.0	12,092	7.2
Services	55,109	25.6	54,250	32.3
(of which domestic work)	(10,557)	(4.9)	(11,528)	(6.9)

Note: (a) Excluding children with missing information on economic sector.

Zobrazení množiny dětí v zaměstnání a její podmnožiny dětské nucené práce a její podmnožiny dětské nebezpečné práce.



Počet dětí v nucené nebo nebezpečné práci v letech 2000 – 2012 a odhadovaný vývoj pro roky 2012 – 2020.



ZDROJ: *Marking progress against child labour - Global estimates and trends 2000-2012* / International Labour Office, International Programme on the Elimination of Child Labour (IPEC) - Geneva: ILO, 2013, ISBN: 978-92-2-127182-6, str. 3, 5, 6, 7, 8, 13, 16.