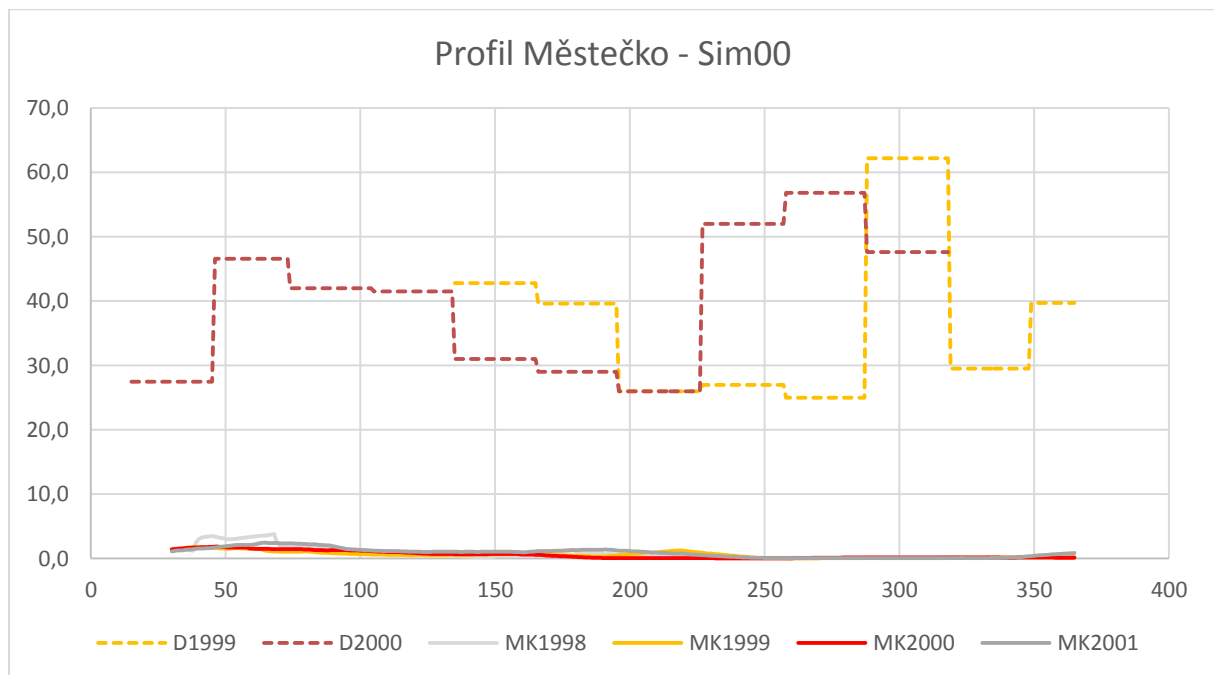
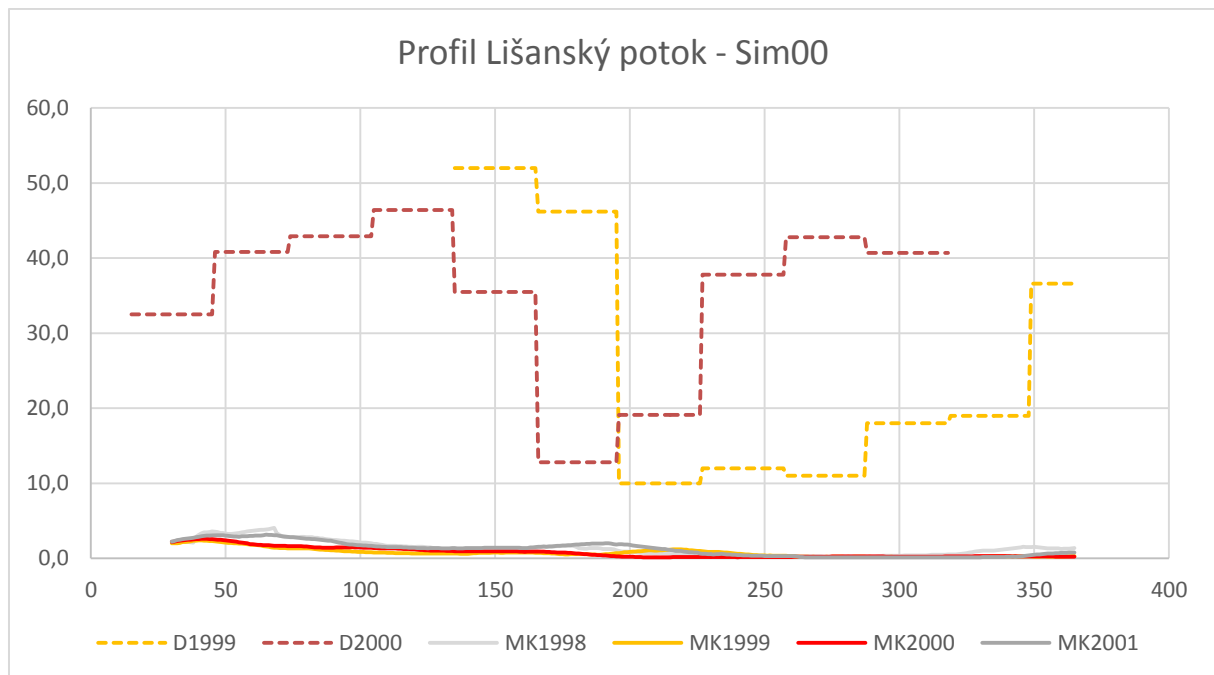
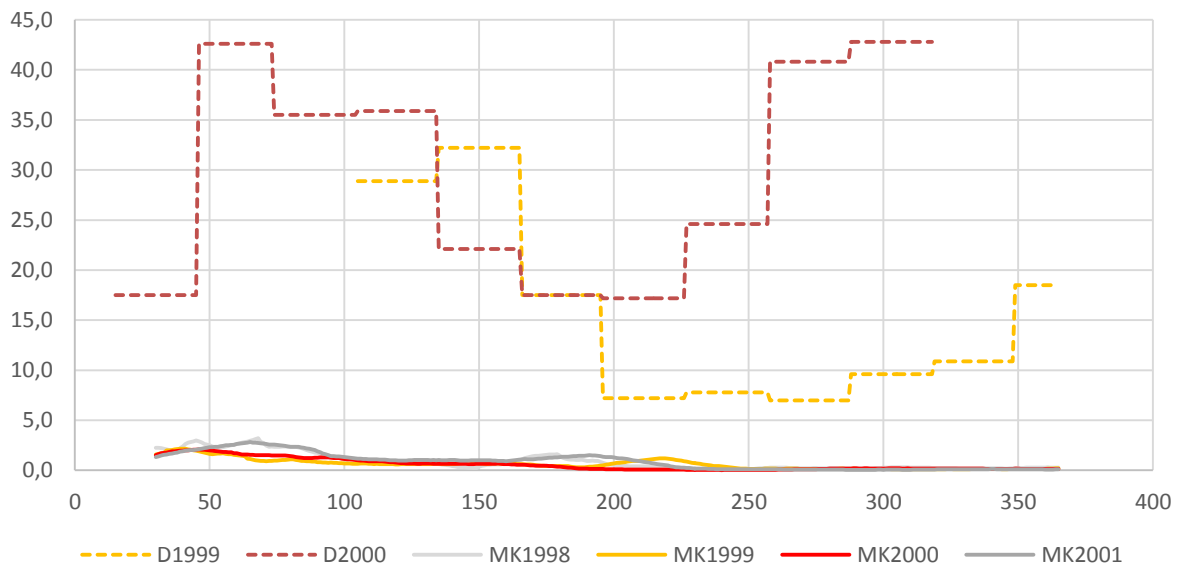


## Přílohy:

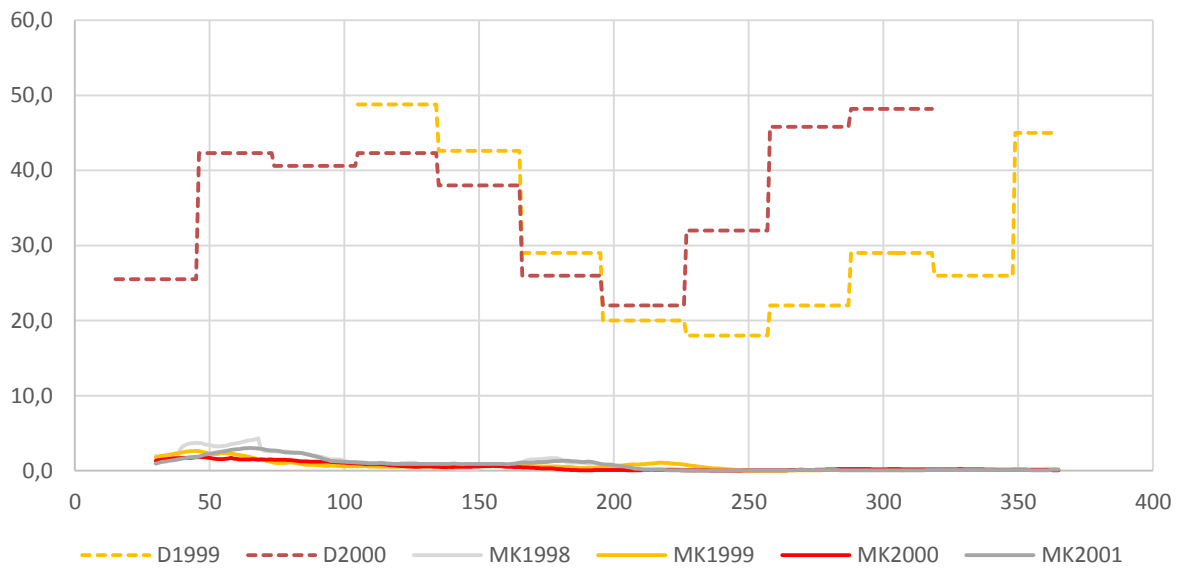
### 1) Varianta bez bodových a plošných zdrojů znečištění

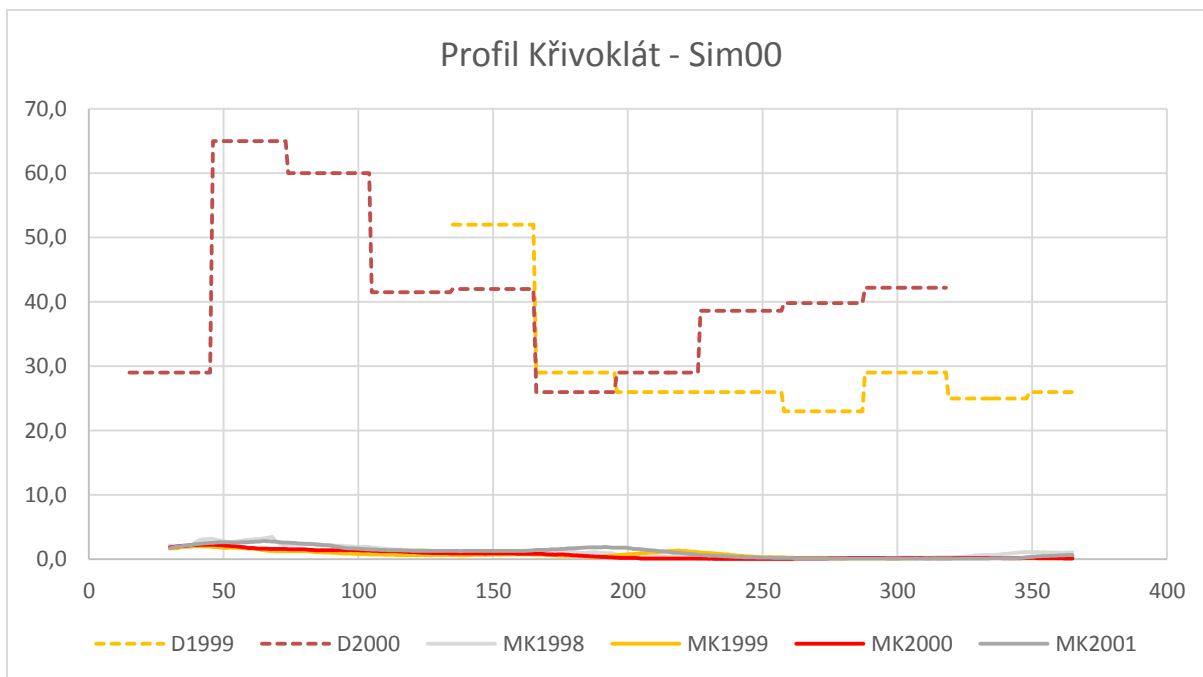


Profil Pšovky - Sim00

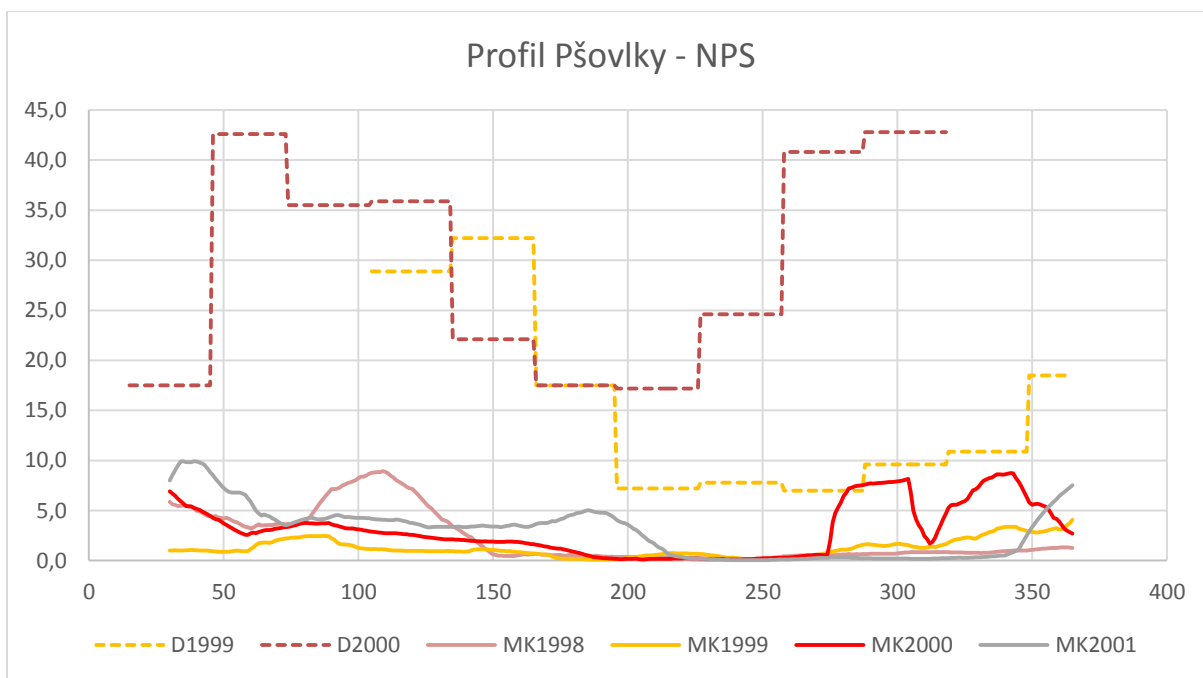


Profil Pustověty - Sim00

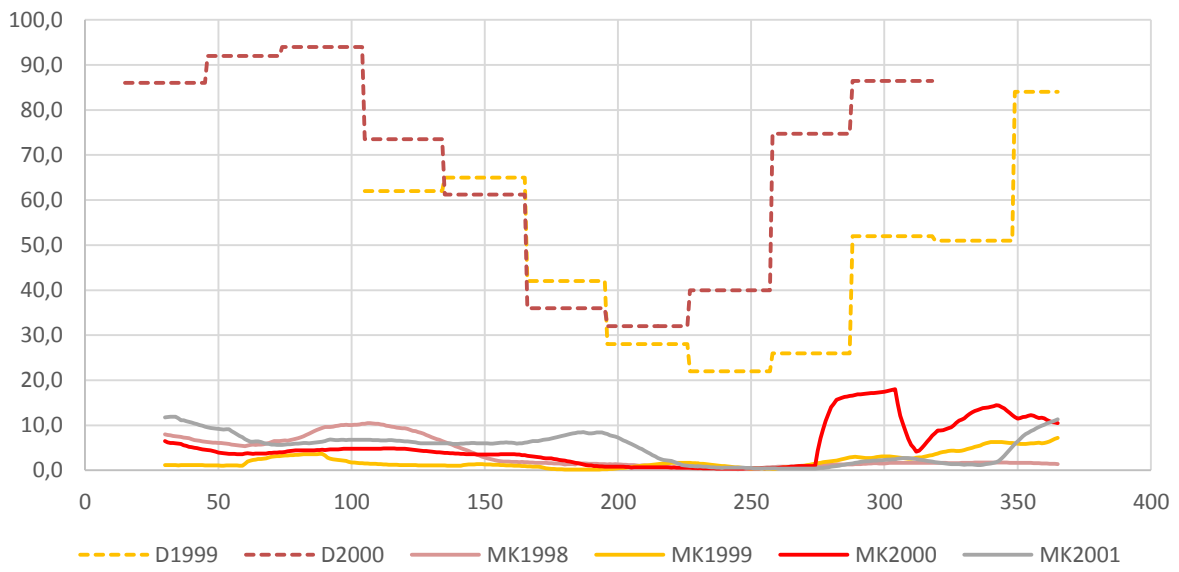




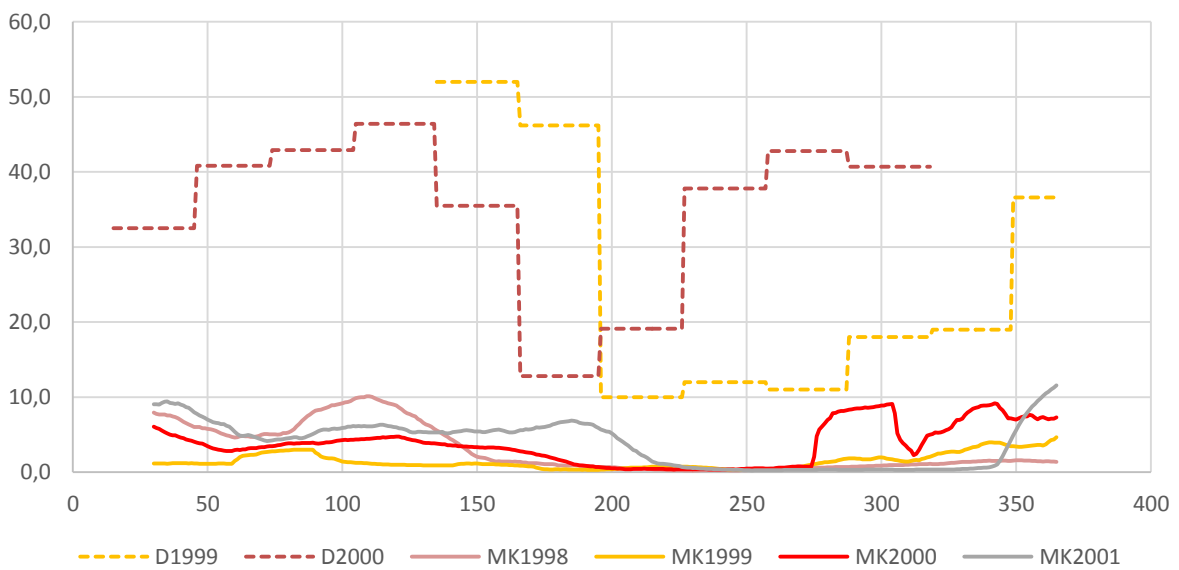
2) Varianta s plošnými zdroji znečištění



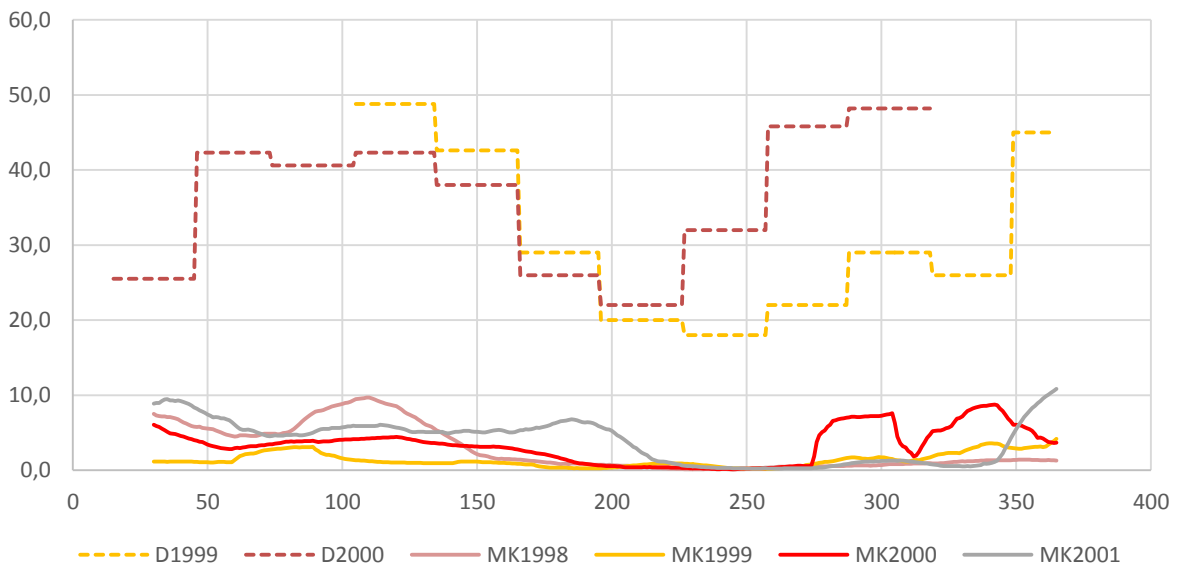
Profil Kolečovický potok - NPS



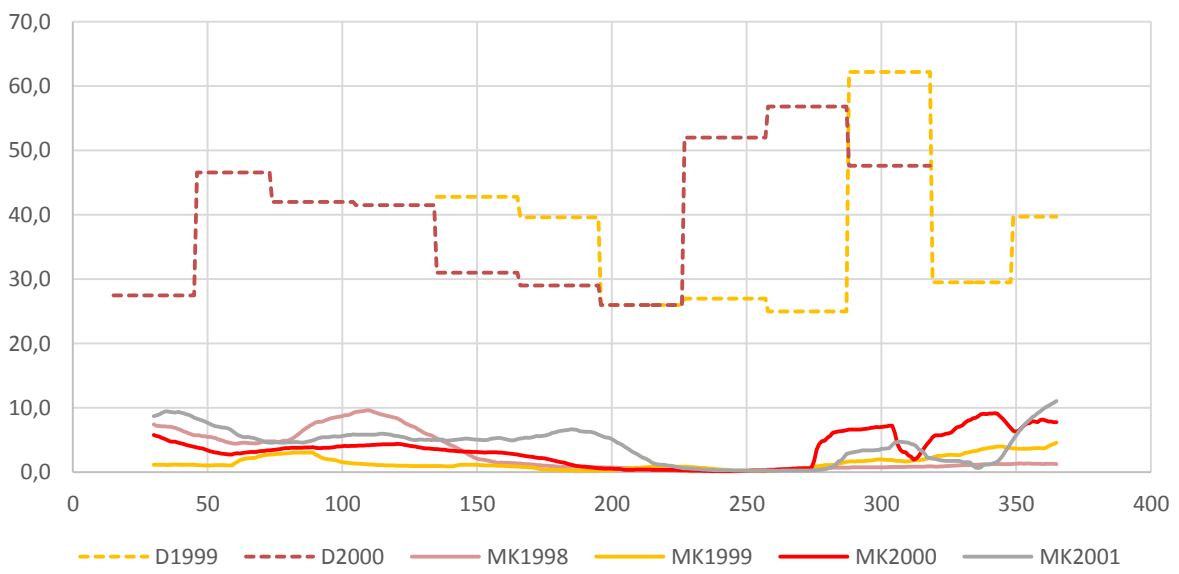
Profil Lišanský potok - NPS

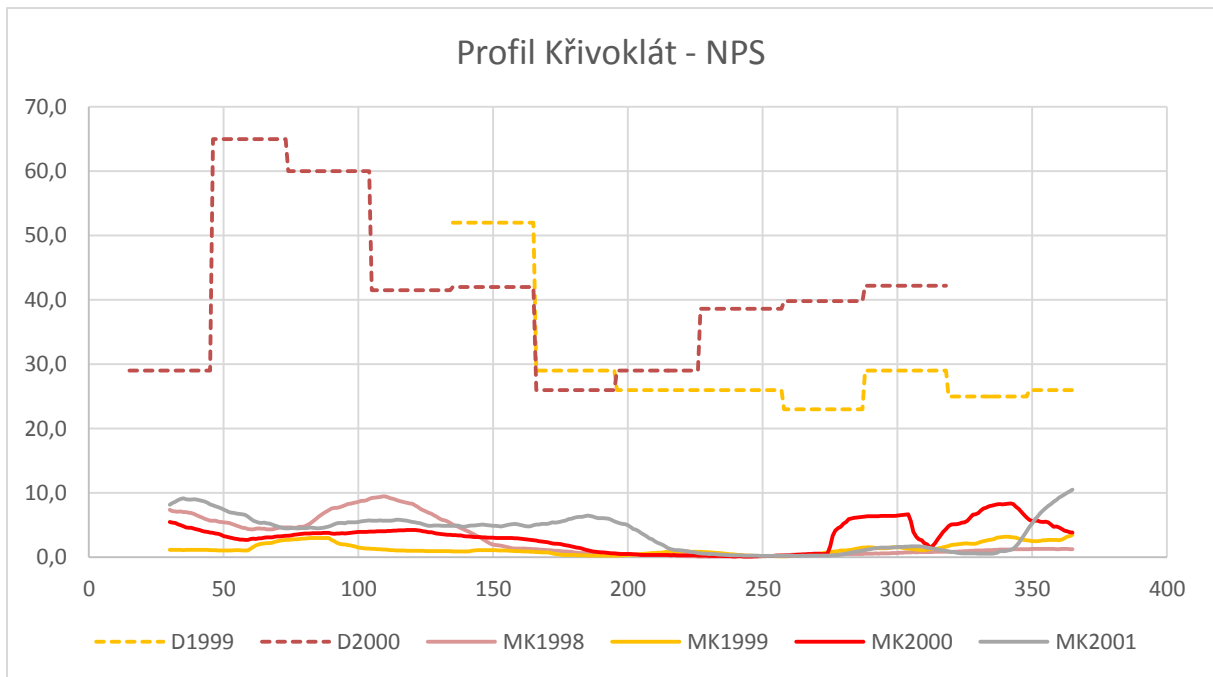


Profil Pustověty - NPS

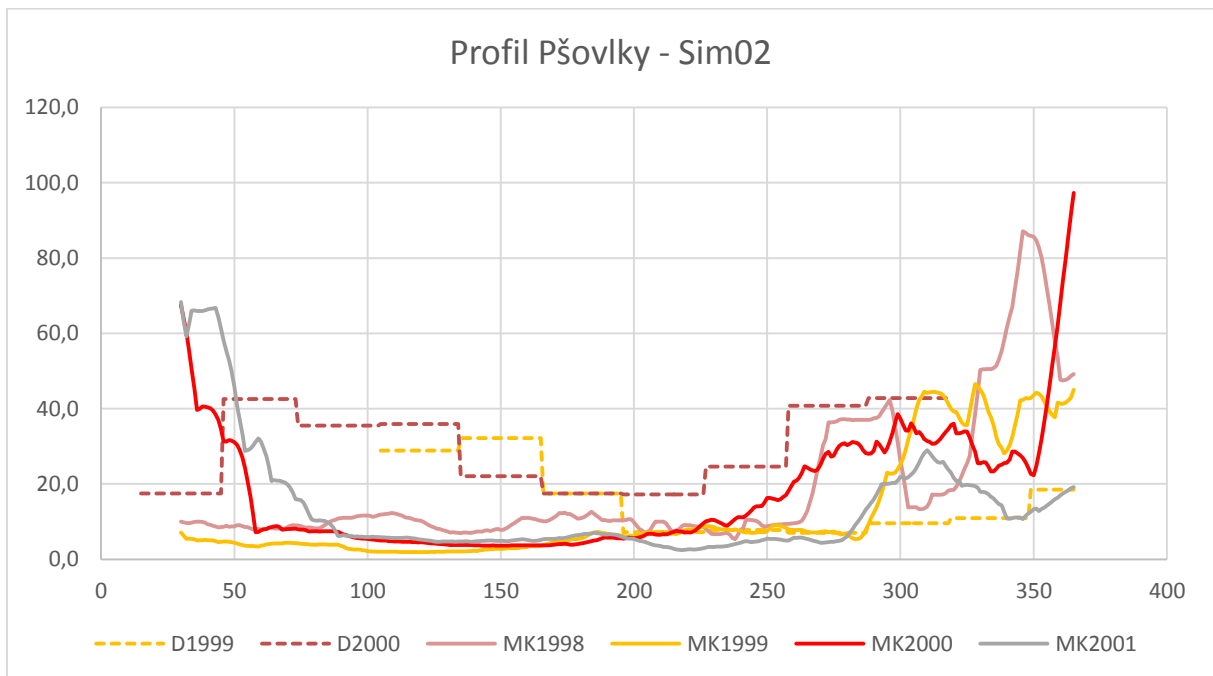


Profil Městečko - NPS

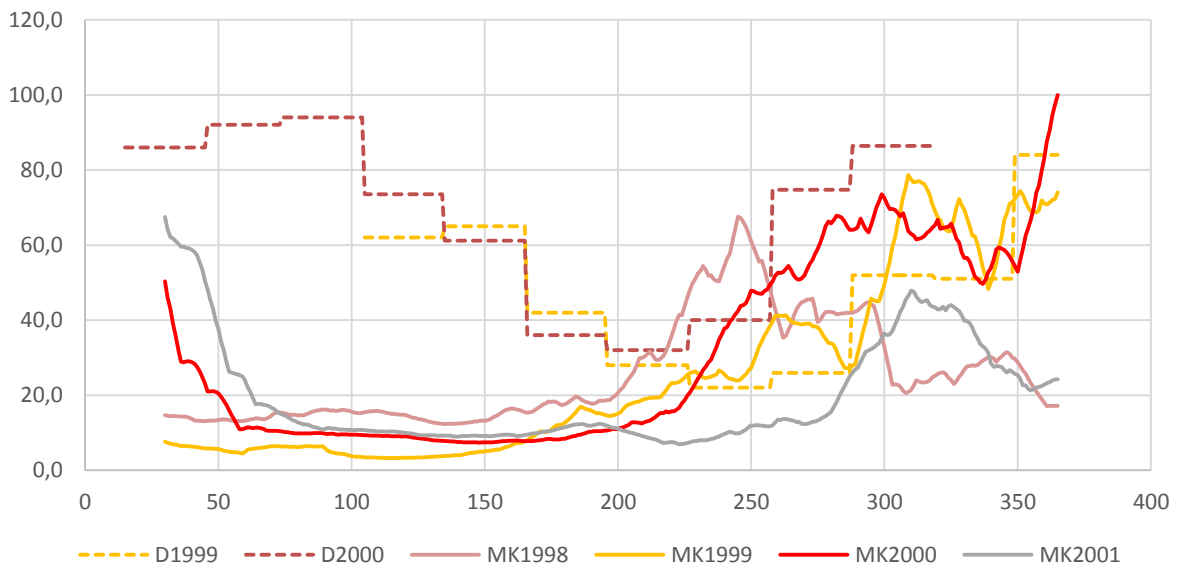




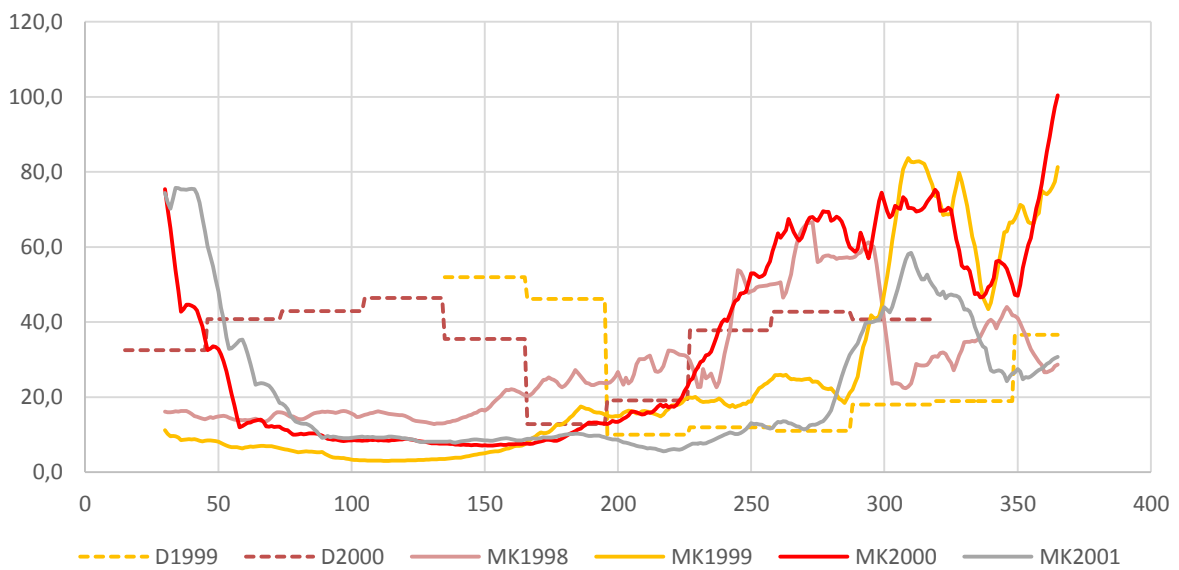
3) Varianta s bodovými i plošnými zdroji znečištění – dle Sim02



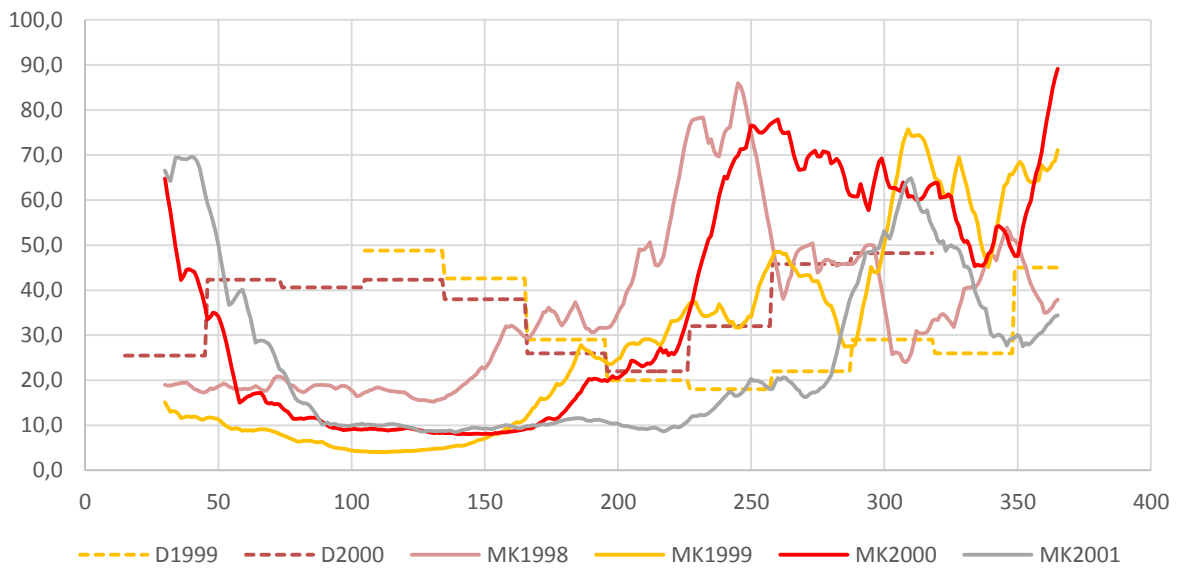
Profil Kolečovický potok - Sim02



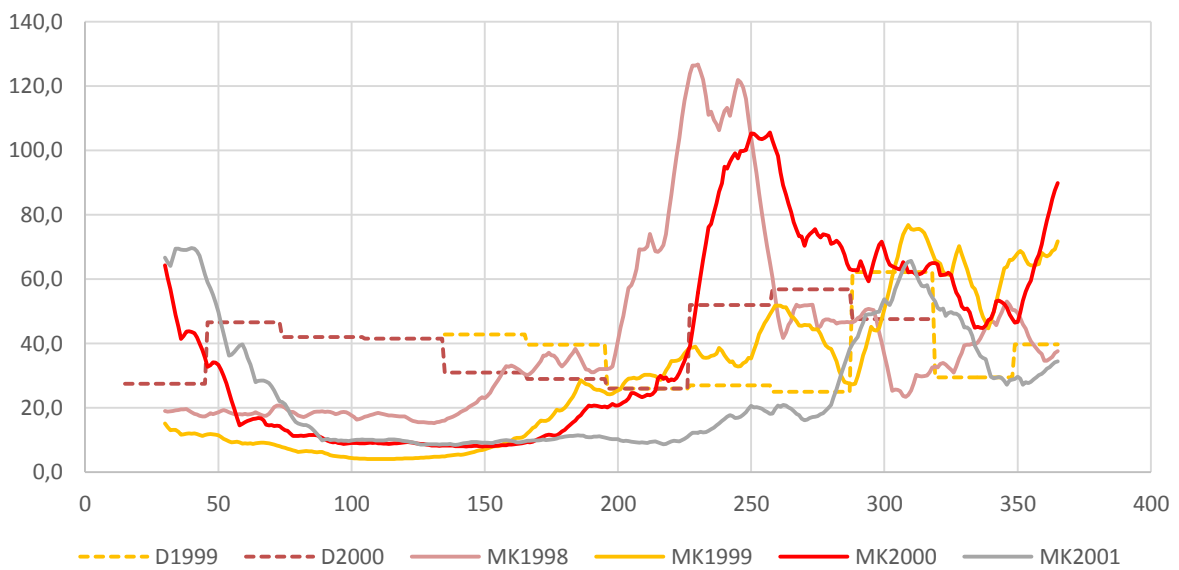
Profil Lišanský potok - Sim02



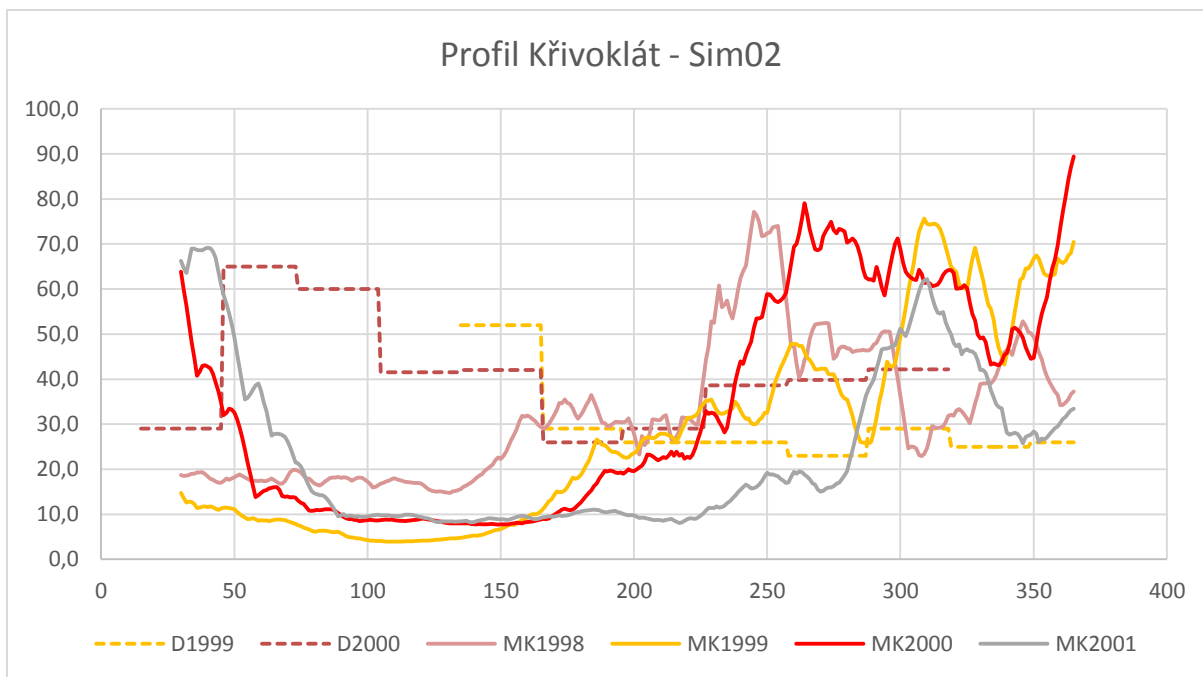
Profil Putověty - Sim02



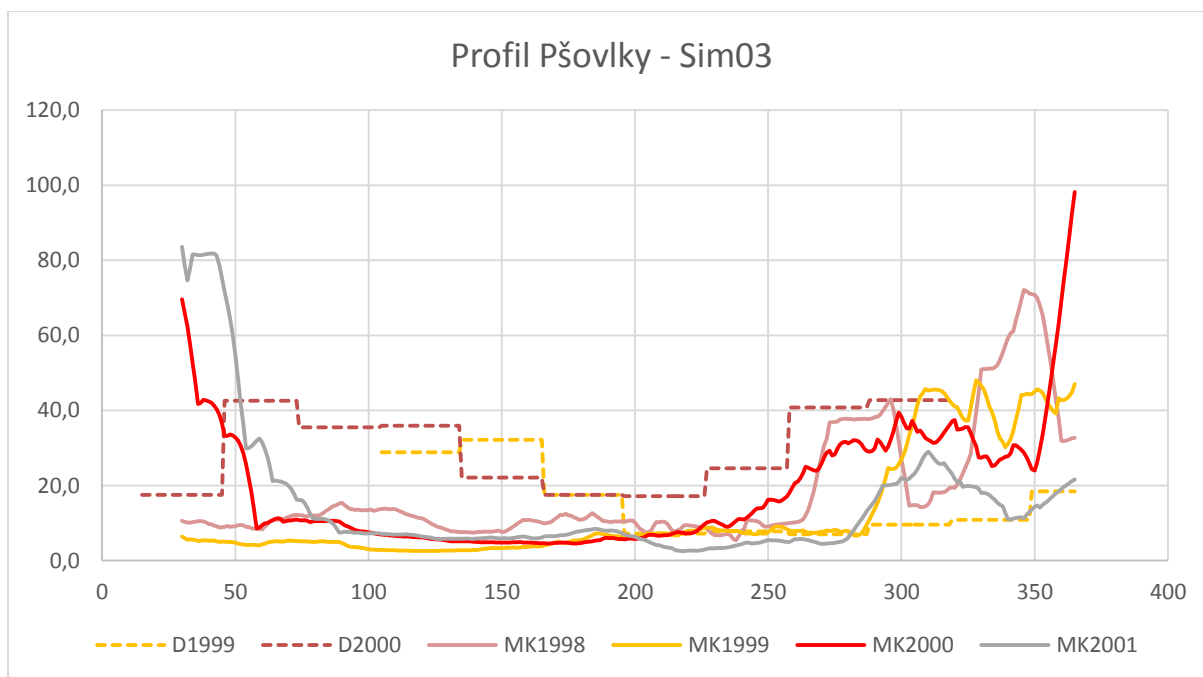
Profil Městečko - Sim02



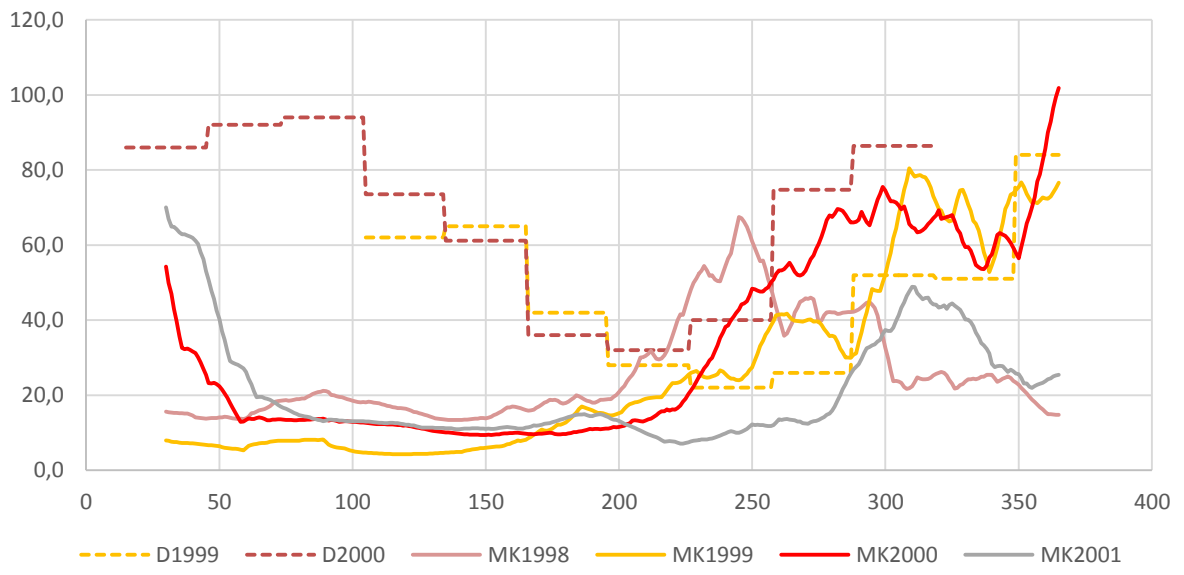




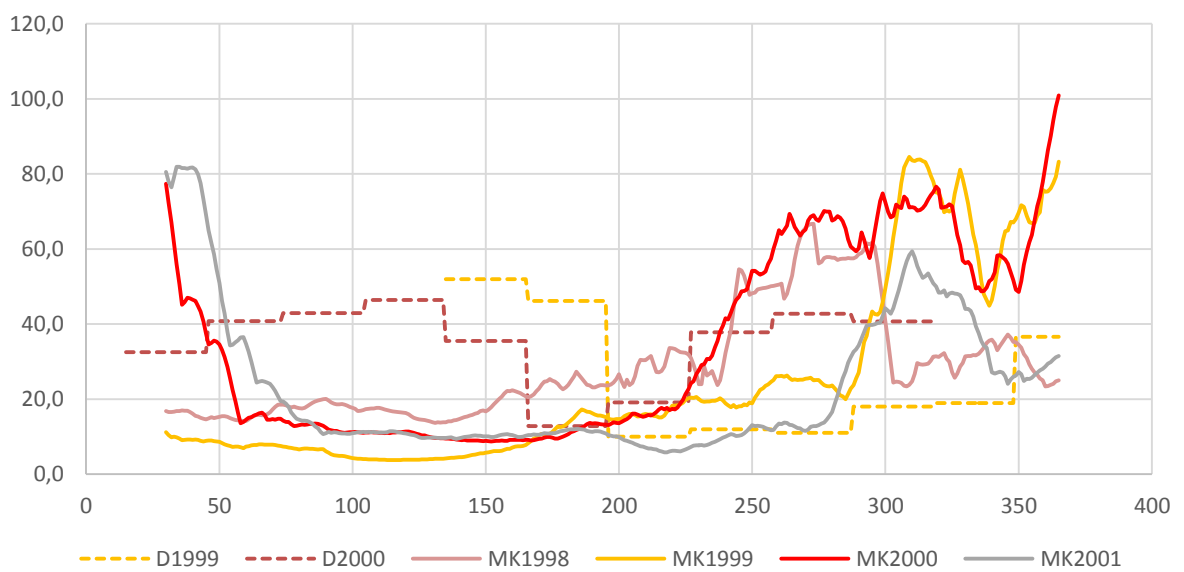
4) Varianta s bodovými i plošnými zdroji znečištění – dle Sim03



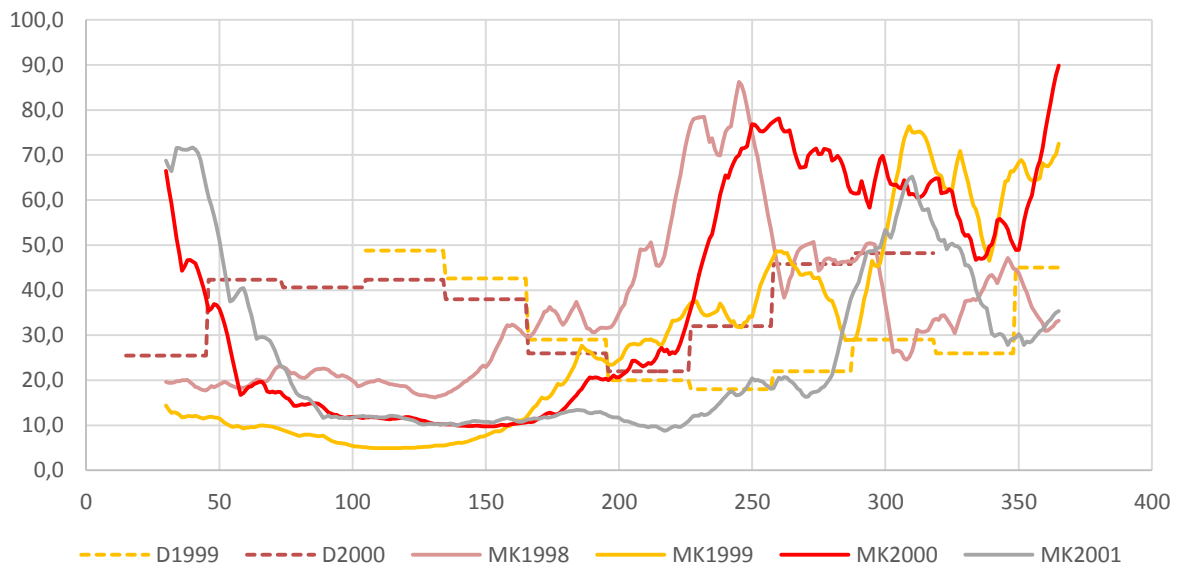
Profil Kolečovický potok - Sim03



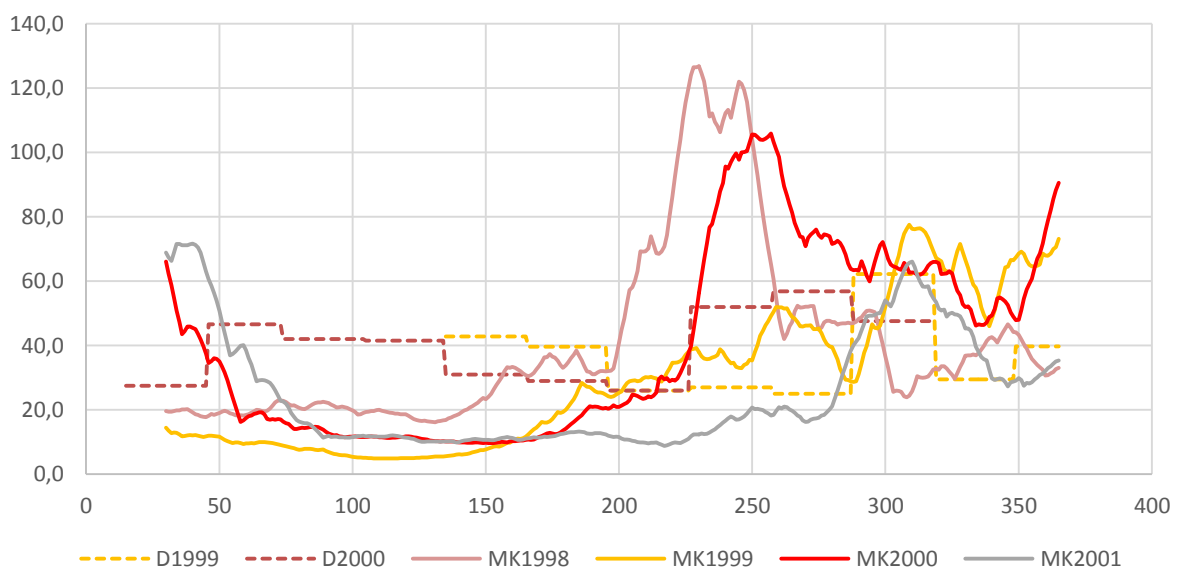
Profil Lišanský potok - Sim03



Profil Pustověty - Sim03



Profil Městečko - Sim03



Profil Křivoklát - Sim03

