

Fig.22 An example of gating strategy for evaluation of SK SLAM HSCs and their proliferative state.

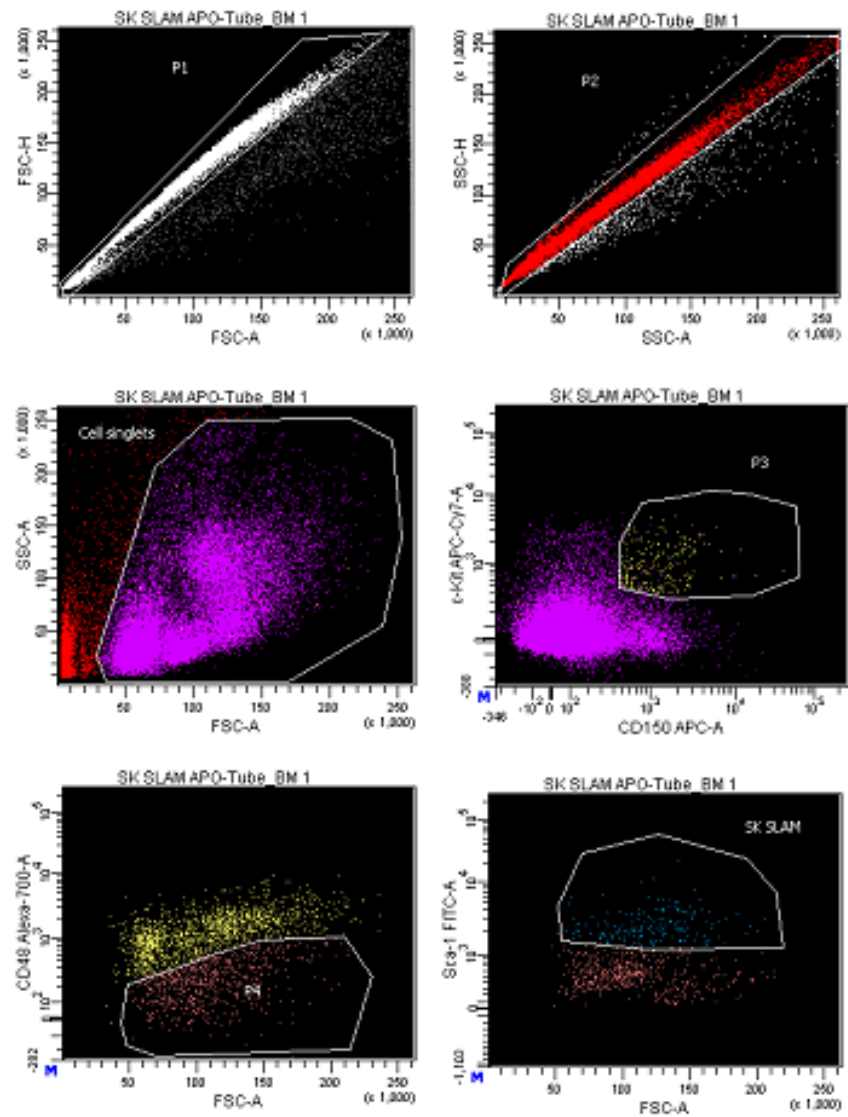
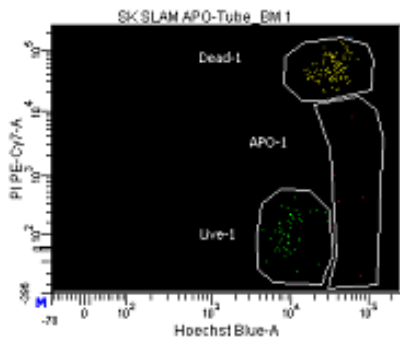
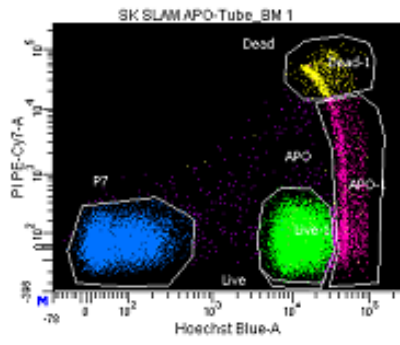


Fig.23a Gating strategy for SK SLAM apoptosis (continues on the next page)



Tube: Tube_BM 1

Population	#Events	%Parent	%Total
All Events	612,010	###	100.0
P1	574,558	93.9	93.9
P2	549,944	95.7	89.9
Cell singlets	406,513	90.3	81.1
Live	262,374	52.8	42.9
APO	35,765	7.2	5.8
Dead	16,237	3.3	2.7
P7	173,788	35.0	28.4
P3	2,114	0.4	0.3
P4	655	31.0	0.1
SK SLAM	165	25.2	0.0
Live-1	49	29.7	0.0
APO-1	6	3.6	0.0
Dead-1	108	65.5	0.0

Fig.23b Gating strategy for the SK SLAM apoptosis.