

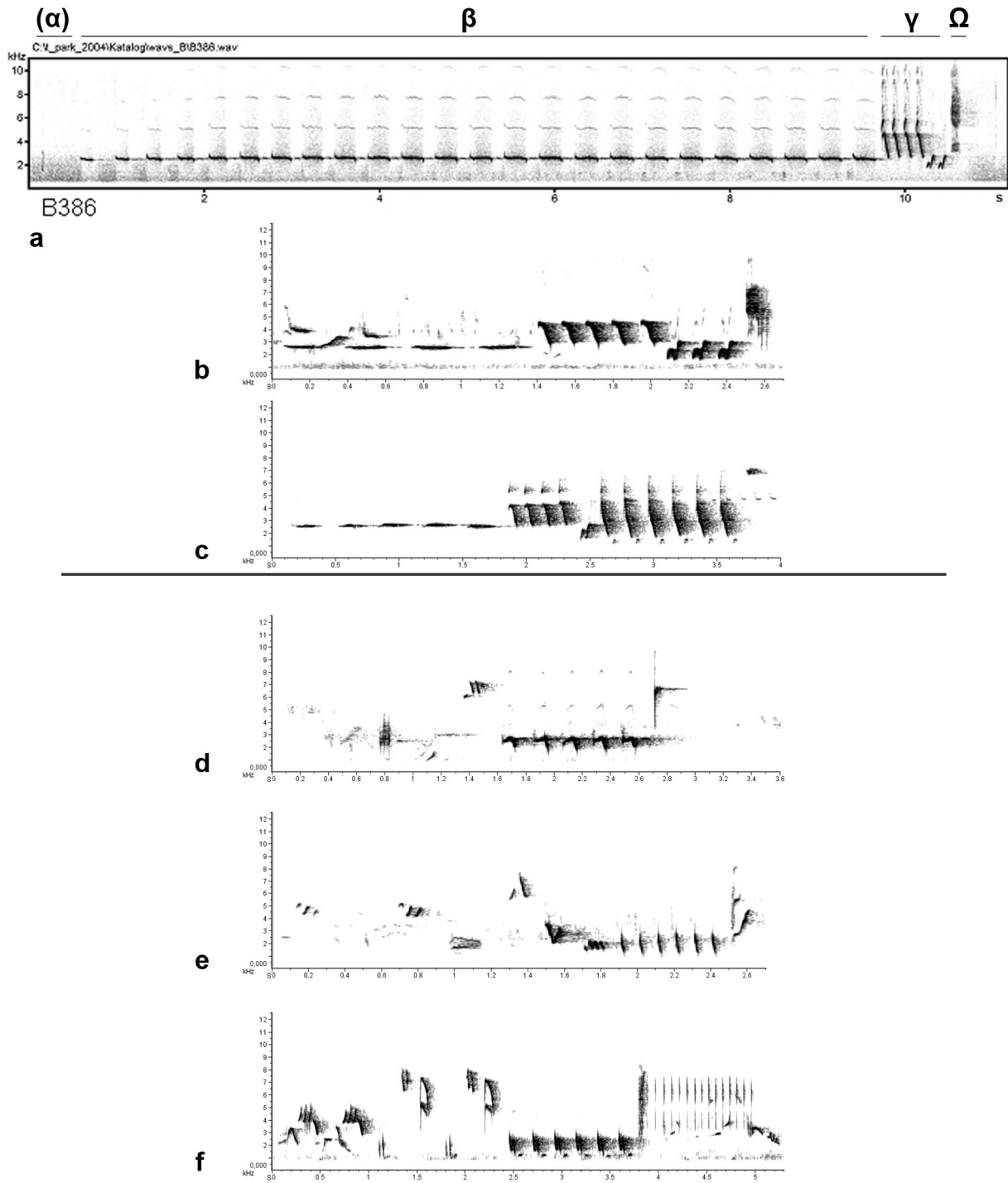
APPENDIX I

Table 1. List of all analyzed nightingale individuals including information about recordings (date, duration and localities), taxon, number of songs per minute and number of songs in each category (see p. 26) per each individual. Additionally, coordinates of places where the sympatric males were captured are given in the table.

Number	Taxon	Duration	Date	Locality	GPS_N	GPS_W/E	N./songs	Song rate	Categ.				Identified		
									Very good	Partial	LM	Unclear	LL	% in strict	% in relaxed
Allopatry Common Nightingale															
1	LM	21:30	April 2008	Berlin			150	6,9	150	0	0	0	0	100,0	100,0
2	LM	20:00	April 2008	Berlin			143	7,2	143	0	0	0	0	100,0	100,0
3	LM	20:00	April 2008	Berlin			213	10,7	213	0	0	0	0	100,0	100,0
4	LM	20:00	May 2008	Berlin			217	10,9	217	0	0	0	0	100,0	100,0
5	LM	21:30	May 2009	Berlin			132	6,1	132	0	0	0	0	100,0	100,0
6	LM	20:00	May 2009	Berlin			144	7,2	144	0	0	0	0	100,0	100,0
7	LM	20:35	May 2 2009	Předměřice n Jiz.			190	9,2	173	12	4	1	0	97,4	99,5
8	LM	21:00	May 3 2009	Předměřice n Jiz.			212	10,1	169	7	32	4	0	83,0	98,1
9	LM	23:00	May 3 2009	Předměřice n Jiz.			261	11,3	191	18	49	3	0	80,1	98,9
10	LM	20:10	May 2 2009	Předměřice n Jiz.			199	9,9	123	27	43	6	0	75,4	97,0
11	LM	23:00	May 2 2009	Předměřice n Jiz.			249	10,9	157	24	63	5	0	72,7	98,0
Sympatry Common Nightingale															
12	LM	20:00	May 20 2008	Czolnochów	52°02.996'N	17°42.655' E	204	10,2	194	0	10	0	0	95,1	100,0
13	LM	23:00	May 19 2008	Czolnochów	52°02.525'N	17°43.787' E	181	7,9	125	18	34	4	0	79,0	97,8
14	LM	20:00	May 26 2008	Pogorzelica	52°08.528'N	17°36.083' E	183	9,4	61	44	71	7	0	57,4	96,2
15	LM	20:00	May 19 2008	Czolnochów	52°02.556'N	17°43.546' E	161	8,1	58	27	71	5	0	52,8	96,9
Sympatry Interspecific hybrids															
16	HYB	20:00	May 24 2007	Koscian	52°08.258'N	16°33.638'E	1 76	8,8	162	11	2	0	1	98,3	99,4
17	HYB	21:00	May 6 2008	Raduchów	51°34.825'N	18°09.832'E	1 39	6,6	123	6	6	3	1	92,8	97,1
18	HYB	20:00	May 26 2008	Ruda Komorska	52°07.092'N	17°39. 859'E	136	6,8	89	31	10	6	0	88,2	95,6
19	HYB	8:11	May 17 2009	Prusinow	52°02.881'N	17°42.249'E	6 3	7,8	45	9	2	3	4	85,7	88,9
20	HYB	21:25	May 25 2008	Pogorzelica	52°08.334'N	17°35.49 9'E	140	6,5	92	27	16	5	0	85,0	96,4
Sympatry Thrush Nightingale															
21	LL	22:00	May 12 2009	Czolnochow	52°02.528'N	17°43.553' E	200	9,1	138	11	22	12	17	74,5	85,5
22	LL	19:36	May 18 2008	Prusinów	52°03.008'N	17°42.573'E	1 75	9,0	109	20	20	5	21	73,7	85,1
23	LL	20:00	May 12 2008	Kwileń	51°58.994'N	17°50.564'E	206	10,3	93	47	43	18	5	68,0	88,8
24	LL	20:10	May 5 2008	Przystajnia	51°35.120'N	18°10.425' E	158	7,8	81	26	34	15	2	67,7	89,2
25	LL	21:00	May 10 2009	Chocz hřiště	51°58.100'N	17°52.278'E	148	7,0	65	13	33	26	11	52,7	75,0
26	LL	21:00	May 10 2009	Chocz loučka	51°58.661'N	17°51.174'E	88	4,2	28	8	13	6	33	40,9	55,7
27	LL	20:05	May 13 2008	Chocz	51°58.314'N	17°51.916'E	151	7 ,5	14	23	0	12	102	24,5	24,5
28	LL	20:05	May 24 2008	Pogorzelica	52°08.515'N	17°35.916 'E	157	7,8	4	6	4	22	121	6,4	8,9
29	LL	20:00	May 19 2008	Czolnochów	52°02.528'N	17°43.833' E	119	6,0	0	0	2	117	0	0,0	1,7
Allopatry Thrush Nightingale															
30	LL	20:01	May 14 2009	Wizna			116	5,8	0	0	0	0	116	0,0	0,0
31	LL	20:00	May 14 2009	Wizna			112	5,6	0	0	0	0	112	0,0	0,0
32	LL	19:45	May 14 2009	Wizna			118	6,0	0	0	0	0	118	0,0	0,0
33	LL	20:05	May 16 2009	Goniadz			180	9,0	0	0	0	0	180	0,0	0,0
34	LL	19:59	May 16 2009	Goniadz			146	7,3	0	0	0	0	146	0,0	0,0

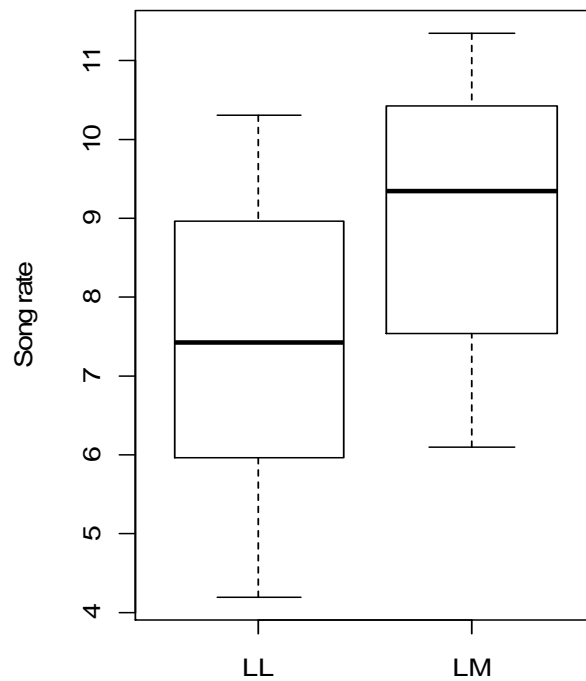
APPENDIX II

Examples of song categories – definitions of each category are written in Methods section (p. 26). **a)** song type template from catalogue (B386) – song of Common Nightingales typically consists of alpha, beta and gamma part (after Hultsch and Todt 1981) **b)** category ‘Very good match’ for B386, **c)** category ‘Partial match’ for B386. **d)** category ‘LM’, **e)** category ‘Unclear’, **f)** category ‘LL’.



APPENDIX III

Graph showing a difference in song rate between nightingale species. Thrush Nightingales (LL) sung less frequently than Common Nightingales (LM). This may be caused by the fact that they sing songs with a longer duration and a lower song rate (Lille 1988). Song rates for each male are showed in Appendix I Table 1. Boxplots of data from Mann–Whitney $U = 47.0$, $N_1 = 14$, $N_2 = 15$, $P = 0.011$ show medians and quartiles.



APPENDIX IV

Cumulative curves of songs identified in catalogue (categories ‘Very good’ + ‘Partial’) from total number of analysed songs in sympatric Thrush Nightingales (upper graph, males 21-29) and hybrids (lower graph, males 16-20) show that they sing Common Nightingales phrases evenly during their song display. Thus, it is possible to conclude that the Common Nightingale phrases can be detected in relatively short recordings (20min).

