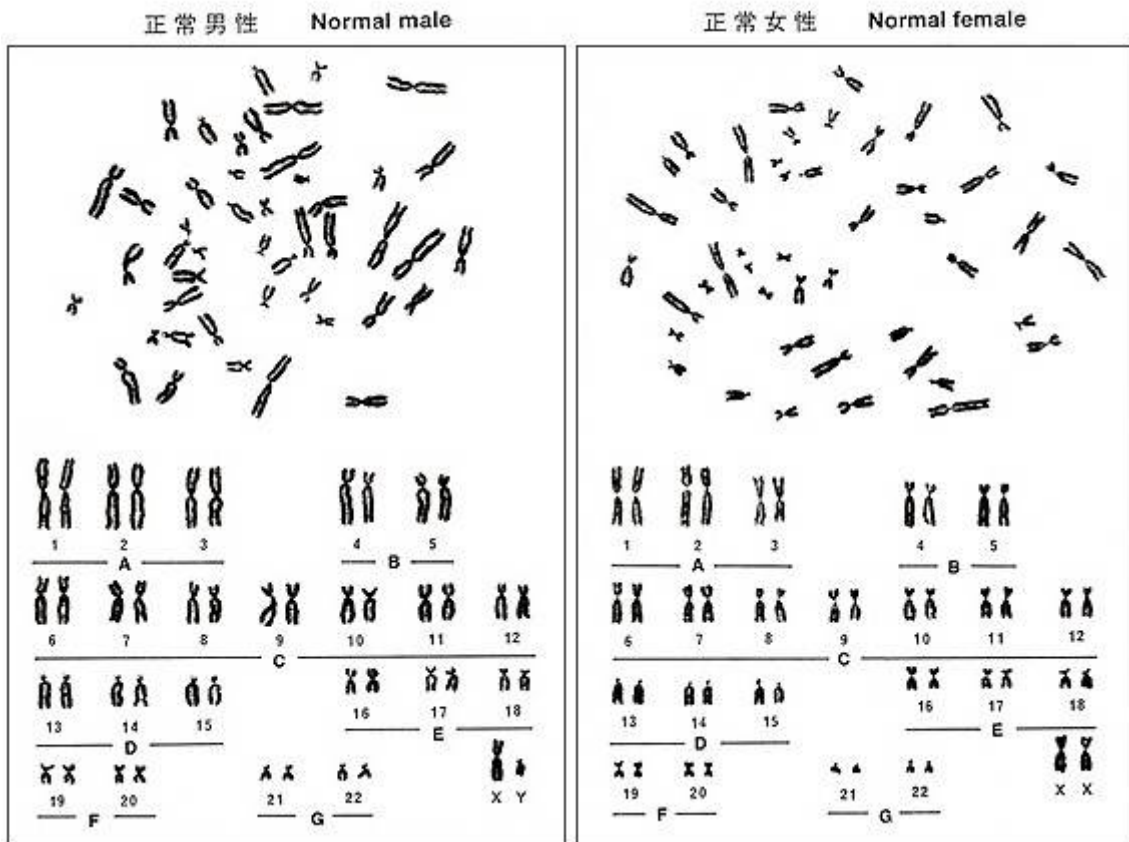
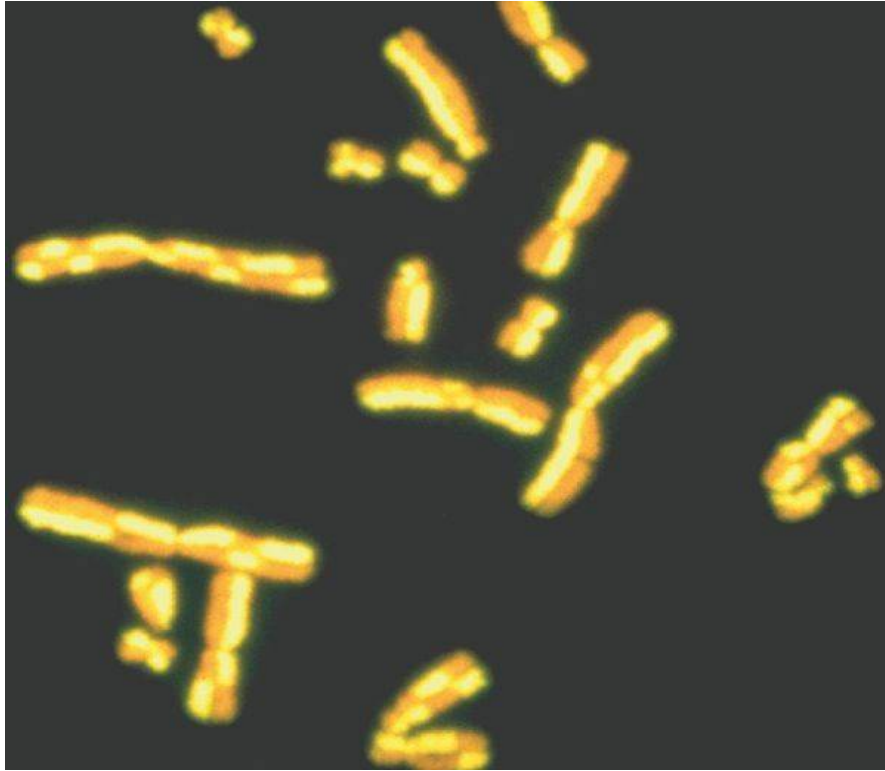


# 1. Přílohy



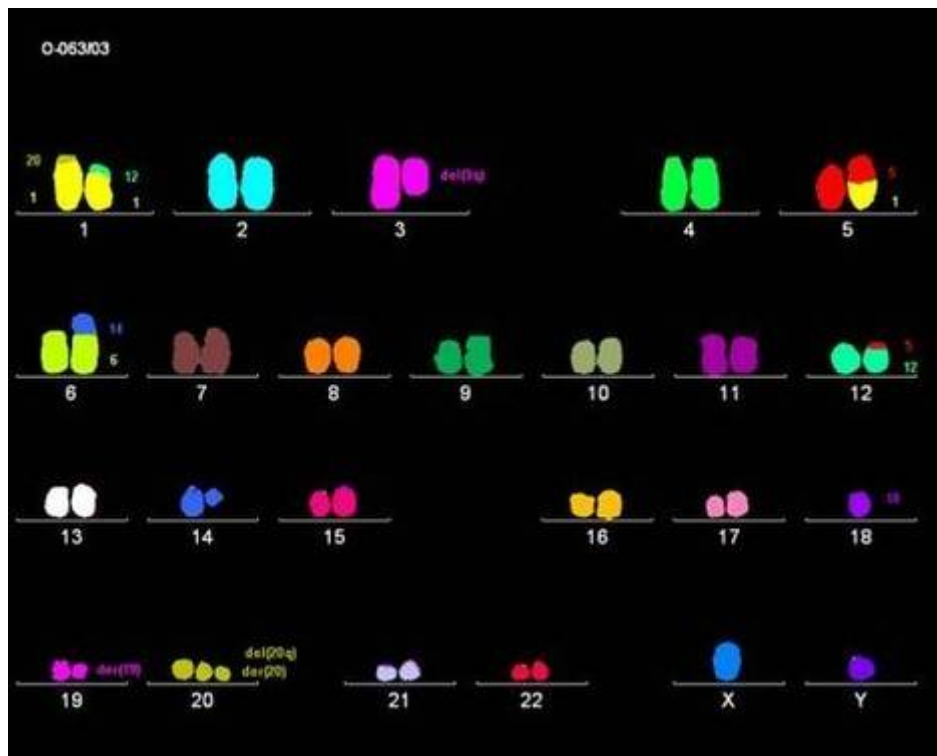
Obrázek 11

Lidské chromosomy barvené Giemsou, vlevo karyotyp muže, vpravo karyotyp ženy  
[http://www.rerf.or.jp/dept/genetics/giemsas\\_4\\_e.html](http://www.rerf.or.jp/dept/genetics/giemsas_4_e.html)



**Obrázek 12**  
SCE

[http://bio3400.nicerweb.com/Locked/media/ch05/sister\\_chromatid\\_exchange.html](http://bio3400.nicerweb.com/Locked/media/ch05/sister_chromatid_exchange.html)



**Obrázek 13**

Karyotyp pacienta s myelodysplastickým syndromem

<http://www.onkologickecentrum.cz/laboratore/vysetreni-mesice/2003/prosinec-mnohobarevna-fish.aspx>