

Appendixes



FIG 1. *Queen Victoria and Prince Albert inspecting the Koh-i-Noor diamond exhibit, after a col lotype. (Centre for Biomedical Communications)*

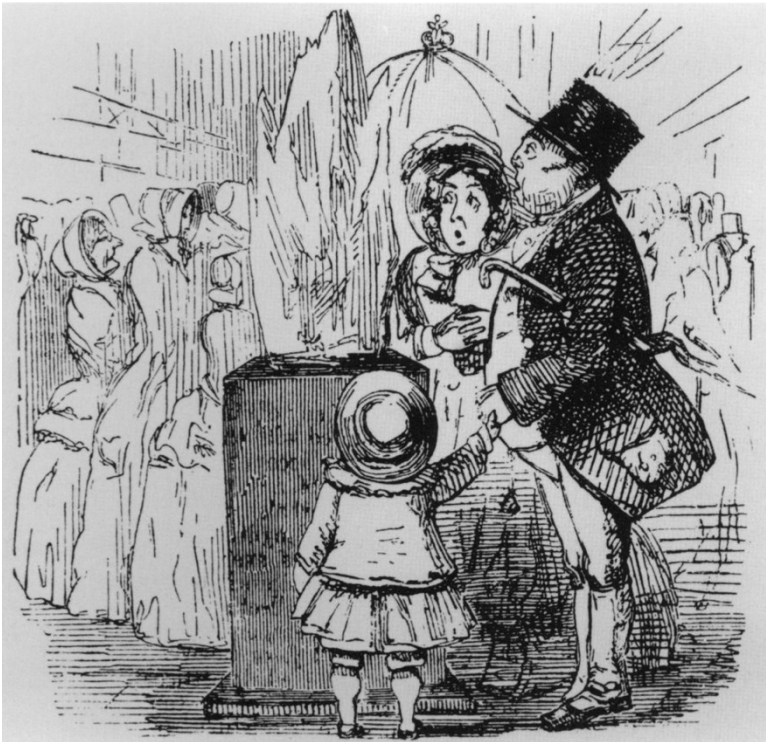


FIG 2. *Viewing the Koh-i-Noor diamond, a cartoon by the proprietors of Punch. (Centre for Bio medical Communications)*



No. XVII.

PERFIDIOUS ALBION LETS HIS DRAWING-ROOM FLOOR TO A DISTINGUISHED FOREIGNER.—  
THE RESULT.

FIG 3. *Punch; caricature of the Great Exhibition.*



No. XVI.—THE NORTH-AMERICAN LODGERS IN 1851.



FIG. 4 *Punch*; caricature of the Great Exhibition.

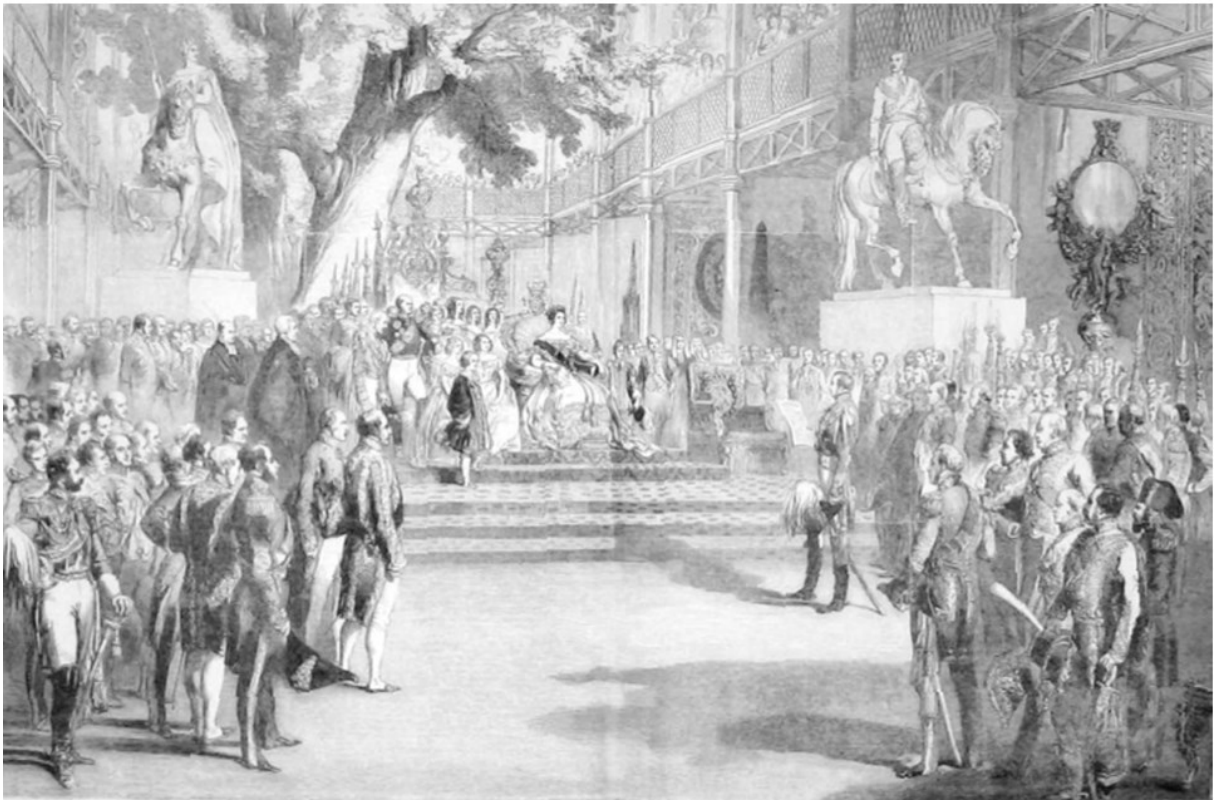


FIG 5. The Illustrated London News' version of the Grand Opening of the Great Exhibition.

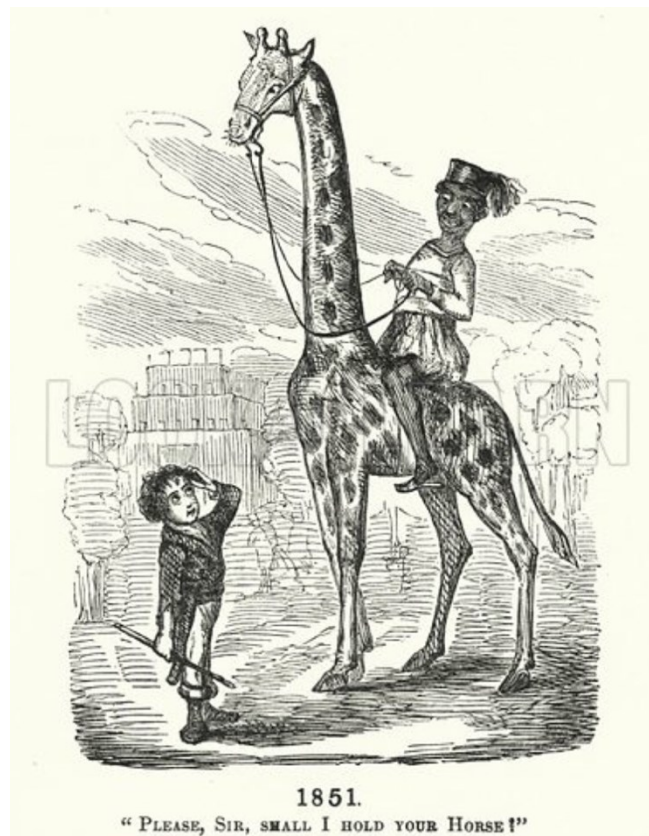


FIG. 6 *Punch*; Great Exhibition of 1851, Volume 20.



FIG. 7. “*London Crammed and Manchester Deserted*”

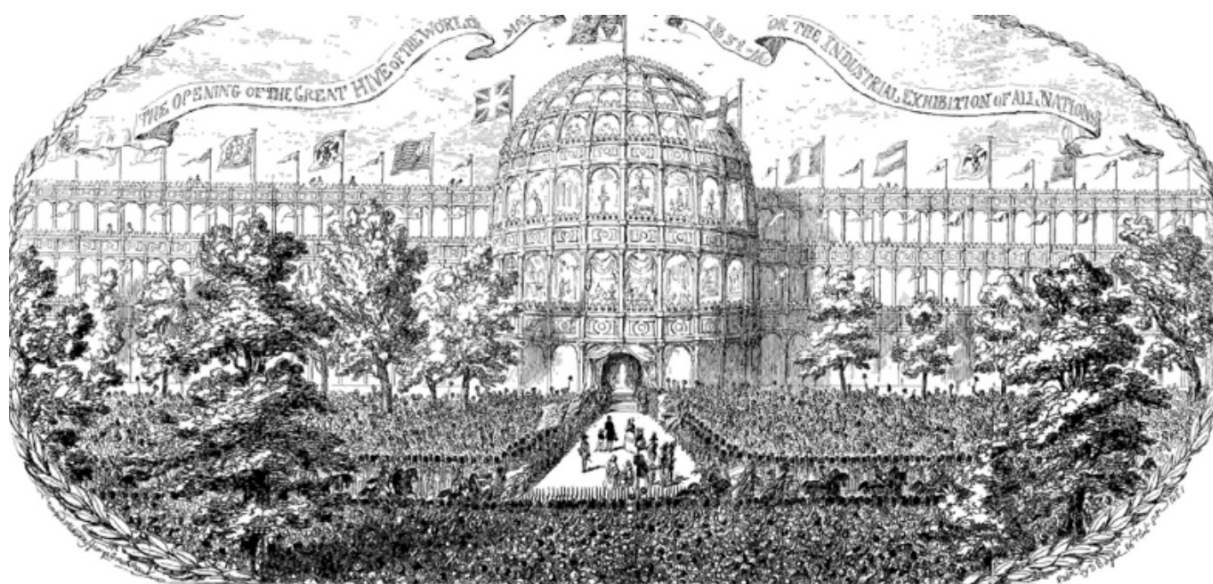


FIG. 8. *“The Opening of the Bee-Hive”*