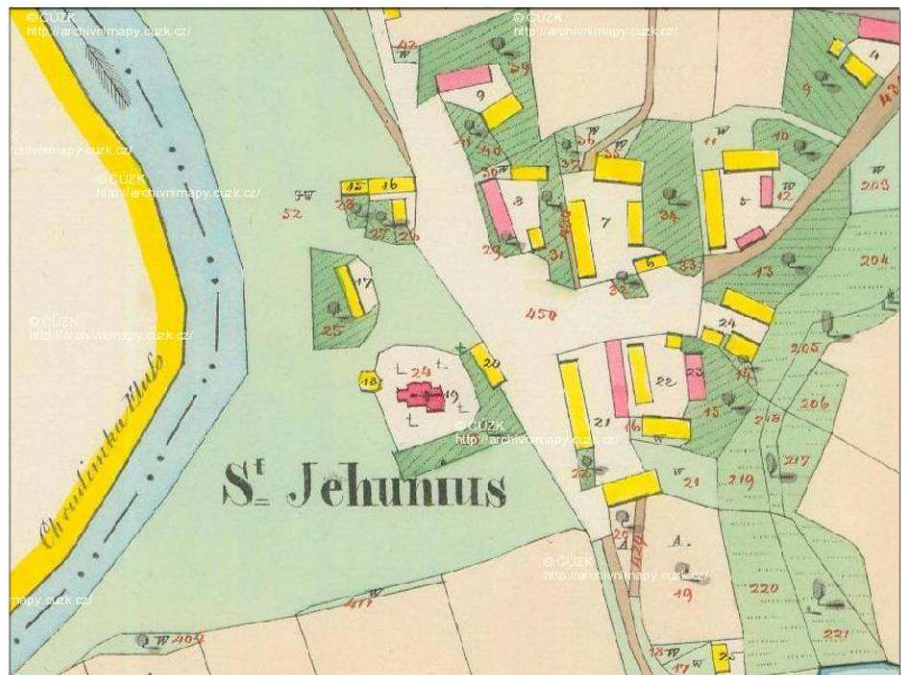
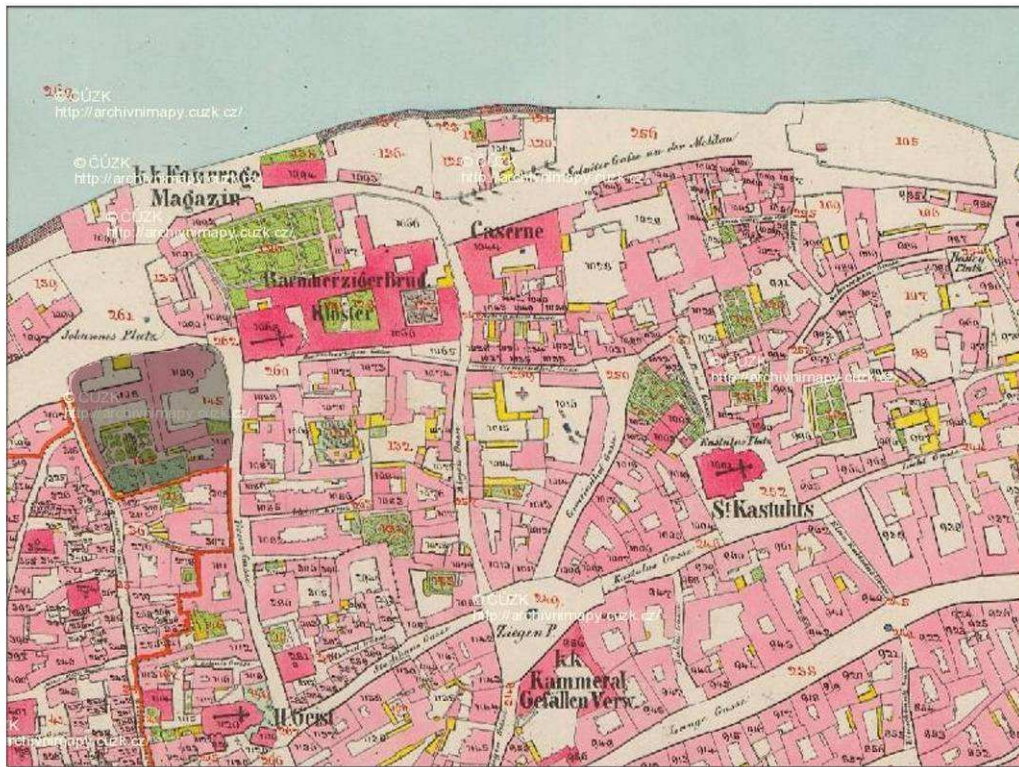


1

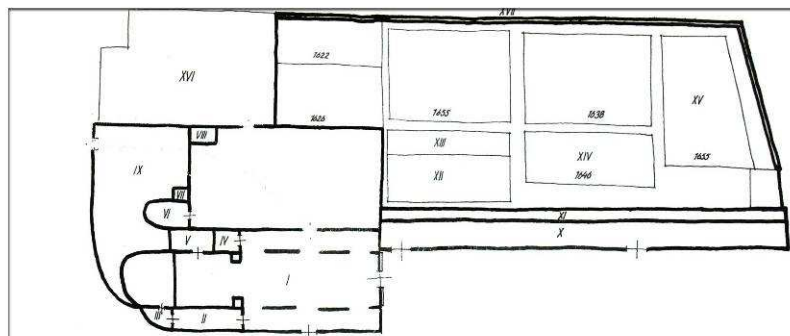


2

Obr. I



1



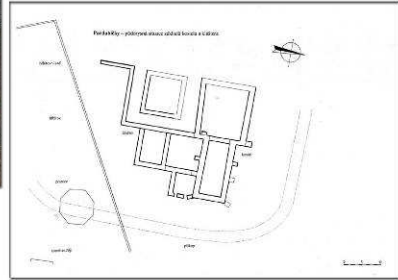
Pláněk kláštera cyriaků s pozemkovým majetkem řádu z doby po pol. 17. stol. (podle rkp. Janus I. f. 31').
 I. Ecclesia S. Crucis. II. Sacellum B. V. M. Dolorosae. III. Olim Sacristia. IV. Sepulchrum S. Joannis Nepomuceni. V. Olim Ossarium nunc Sacristia. VI. Capella S. Ludmillae Vid. Mart. VII. Ossarium. VIII. Turris, Capella S. Blasii. IX. Coemeterium. X. Monasterium. XI. Ambitus. XII. Domus Ecclesiae pod Cihlou dicta. XIII. Hortus Ecclesiae. XIV. Hortus. XV. Dřevnice. XVI. Dům u Effebiků. XVII. Modernus murus hortus.
 Jednotlivá data vyznačují, kdy byly pozemky, zabrané klášteru. Čtyři domy nad zdi zahrady (jižně od kláštera), náležející rovněž ke klášteru, zde neuvádíme, protože stavební úpravy kláštera po celou dobu baroka se daly pouze na prostranství, vymezeném na severu zdi kostela, resp. frontou náměstí a na jihu zdi zahrady.

2

Obr. II



1

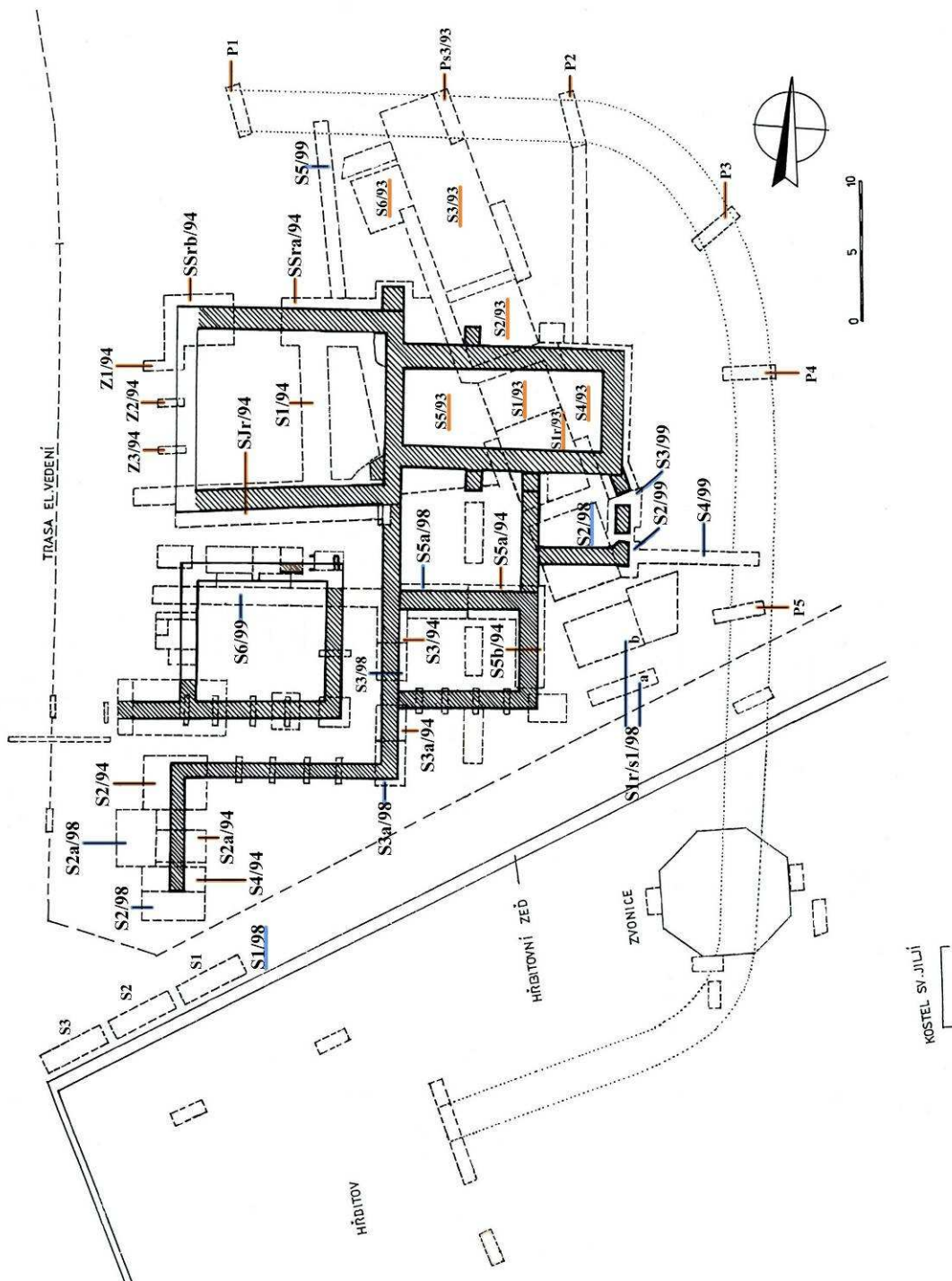


3



4

Obr. III

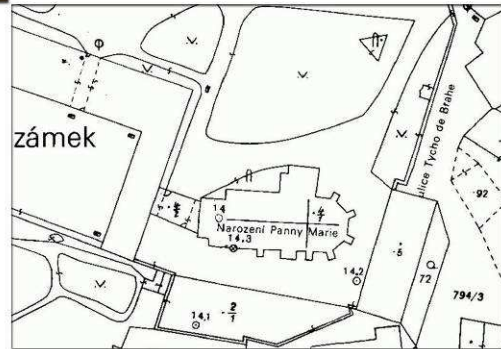


PARDUBIČKY – ORIENTAČNÍ PLÁNEK S OZNAČENÍM ARCHEOLOGICKÝCH SOND Z LET 1993/94, 1998/99
 (podle T. Čurdy)

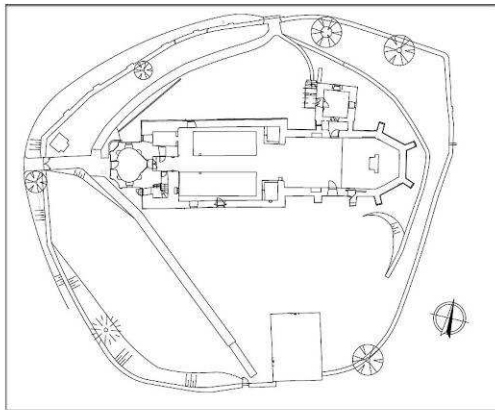
Obr. IV



1



2

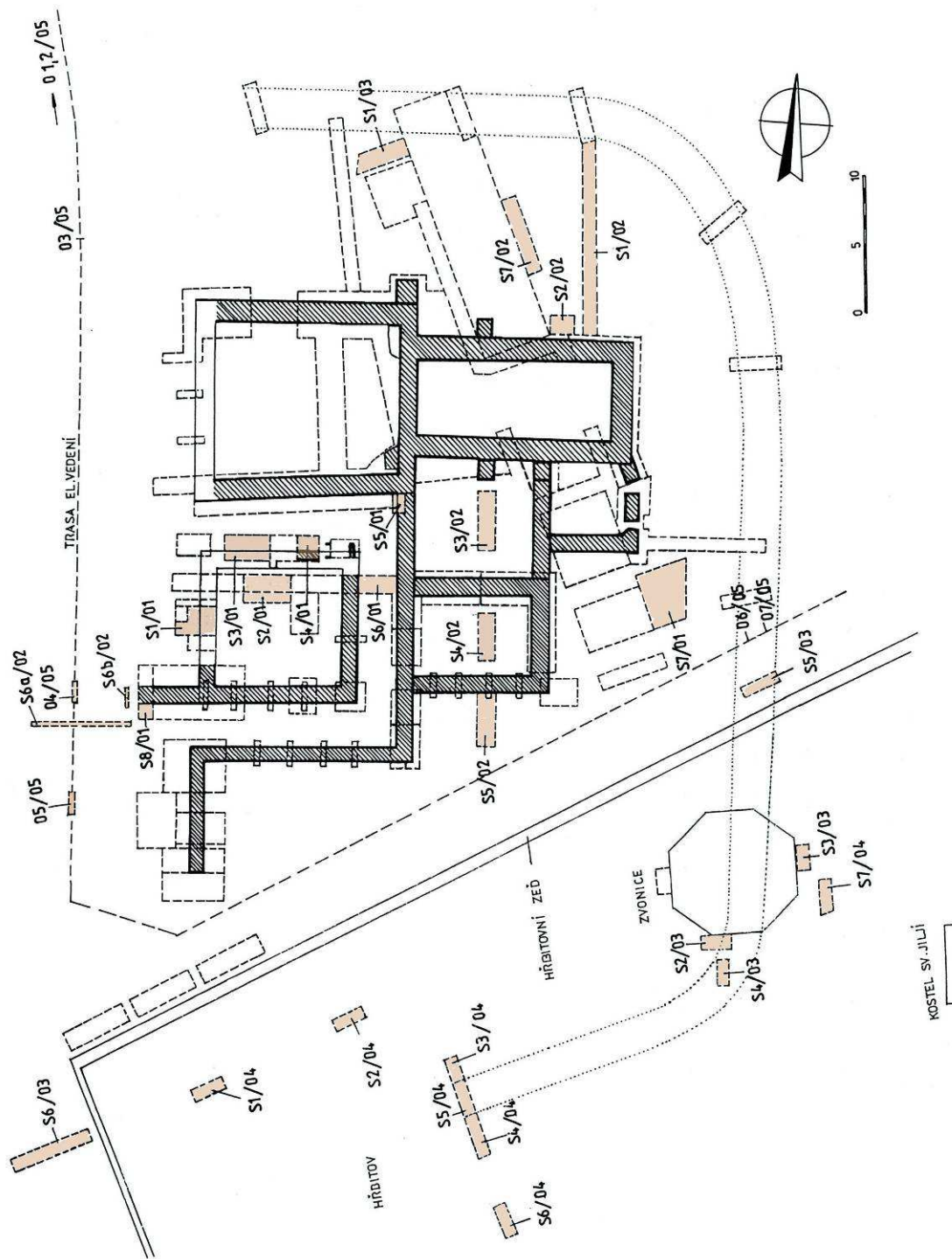


3



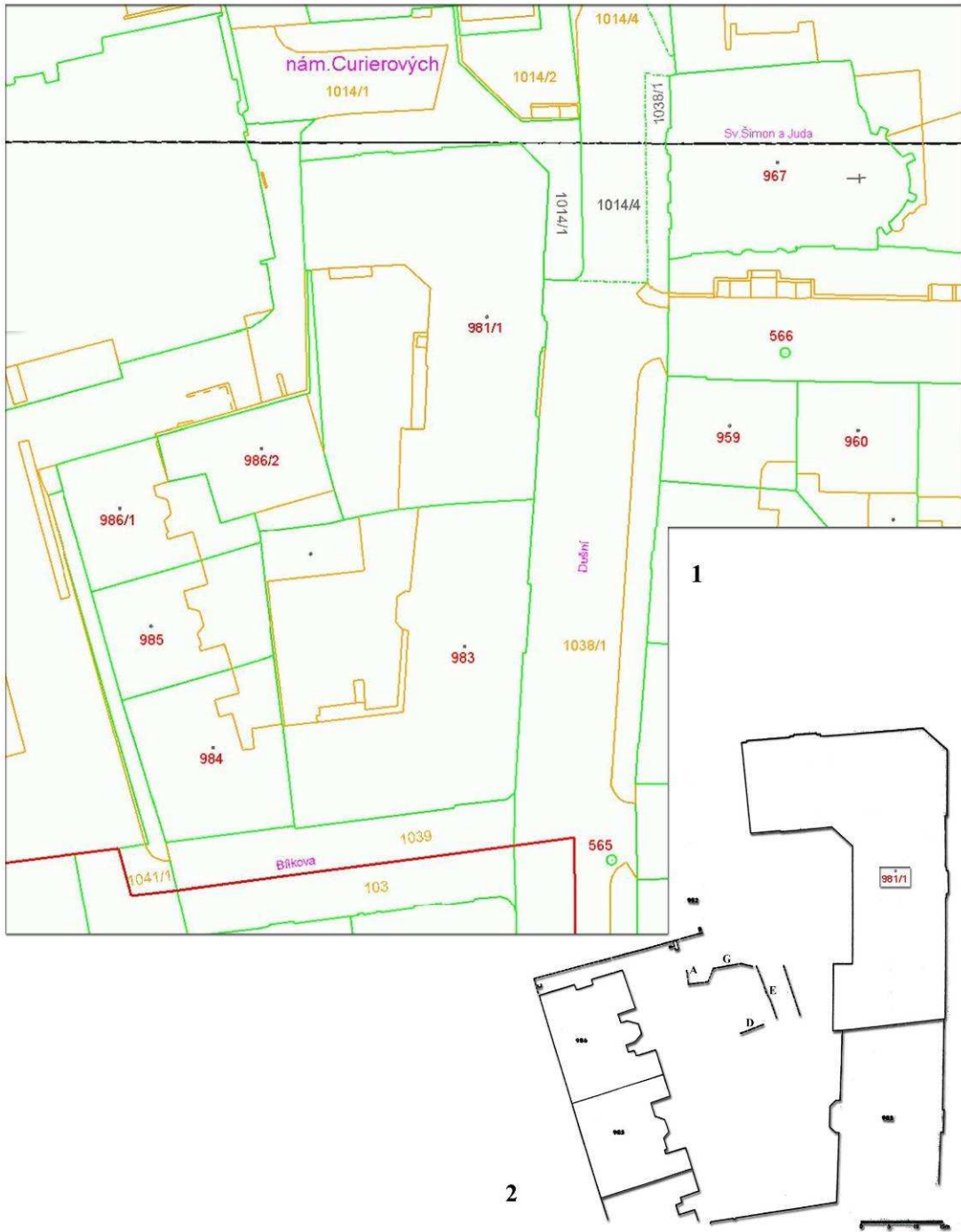
4

Obr. IX



PARDUBIČKY - ORIENTAČNÍ PLÁNEK S OZNAČENÍM ARCHEOLOGICKÝCH SOND Z LET 2001 - 2005
(podle T. Čurdy)

Obr. V

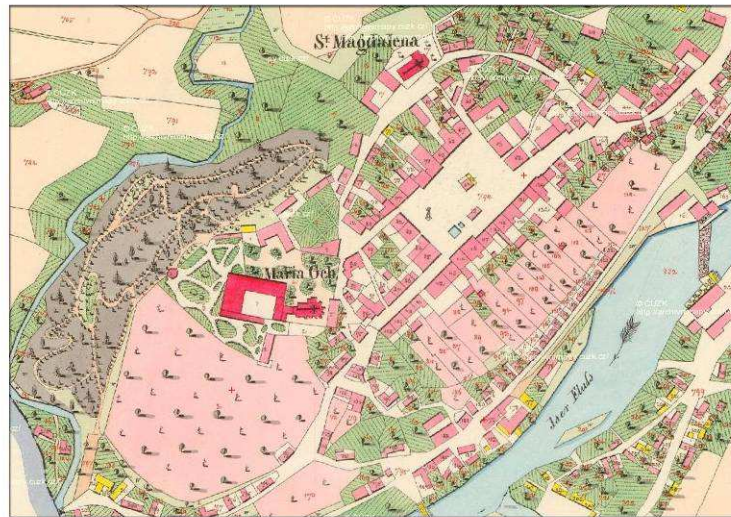


Práha 1 - Staré Město, nám. Curierův, parc. č. 982 D. Situace vřáku. Kresba Zv. Dragoun.

Obr. VI

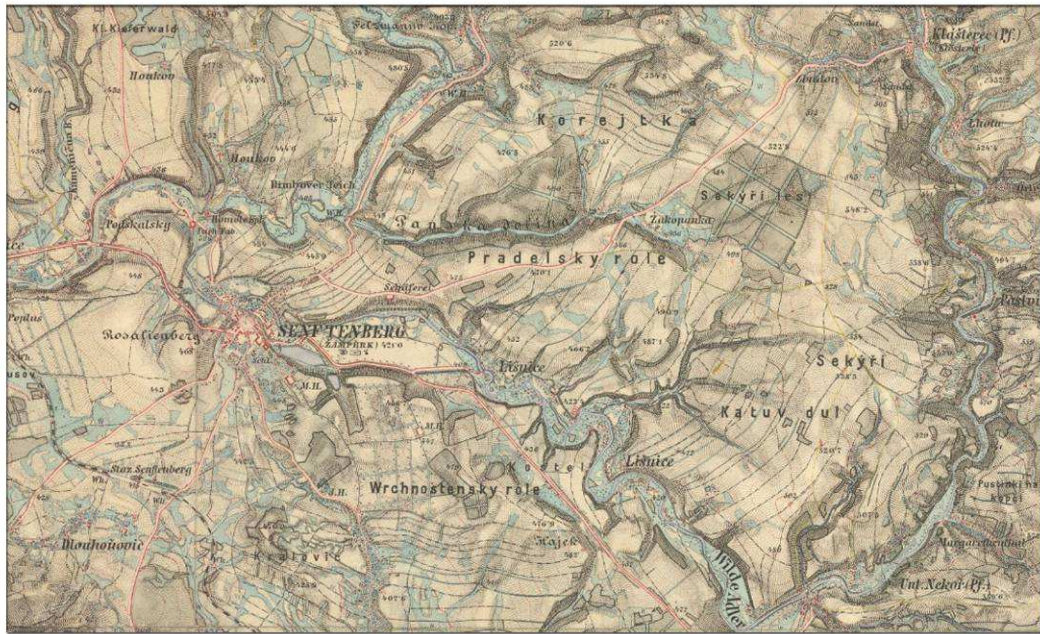


1

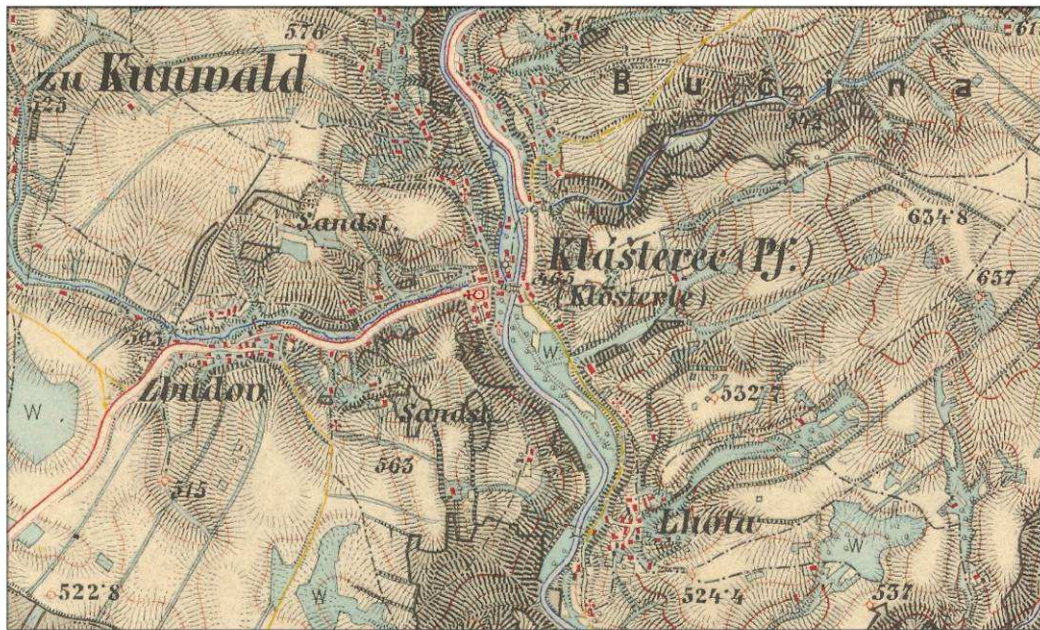


2

Obr. VII

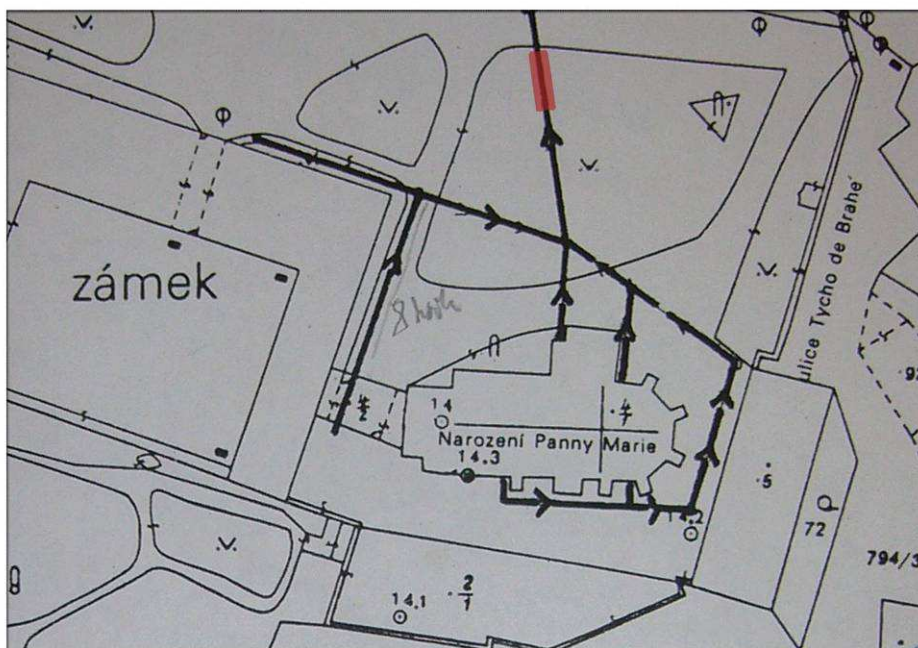


1



2

Obr. VIII

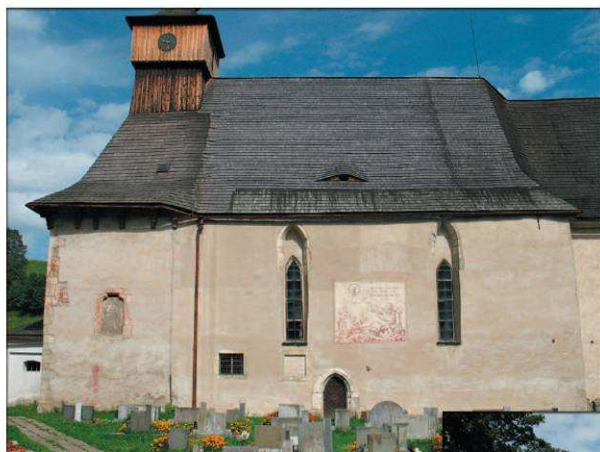
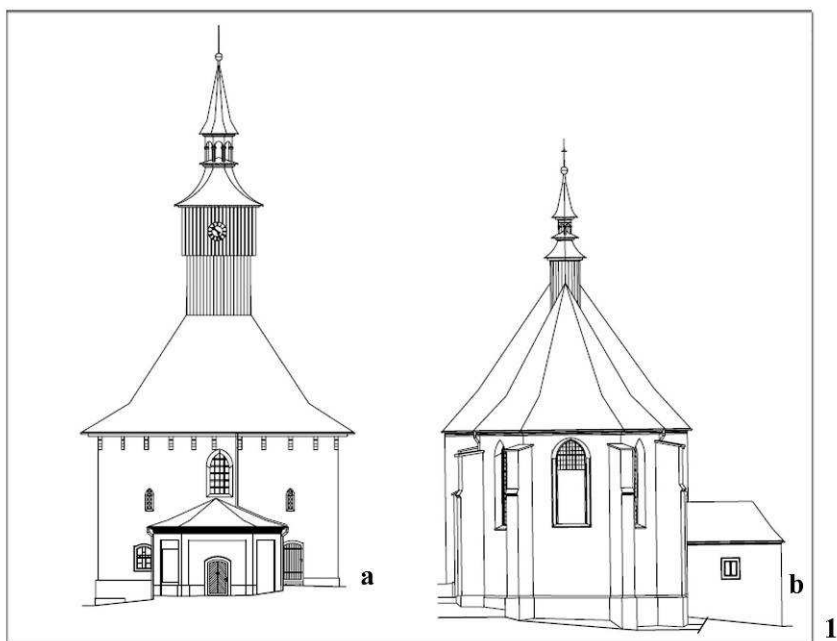


1

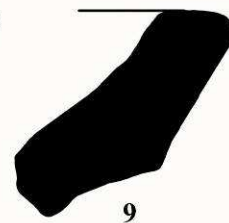
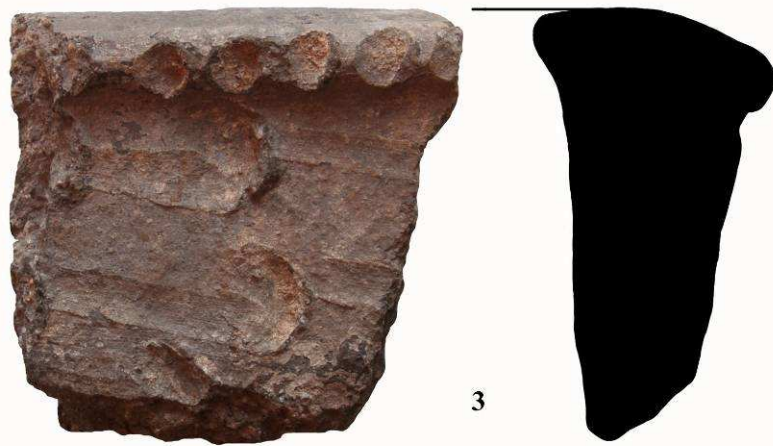
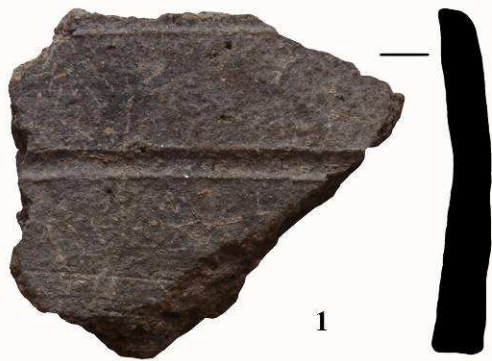


2

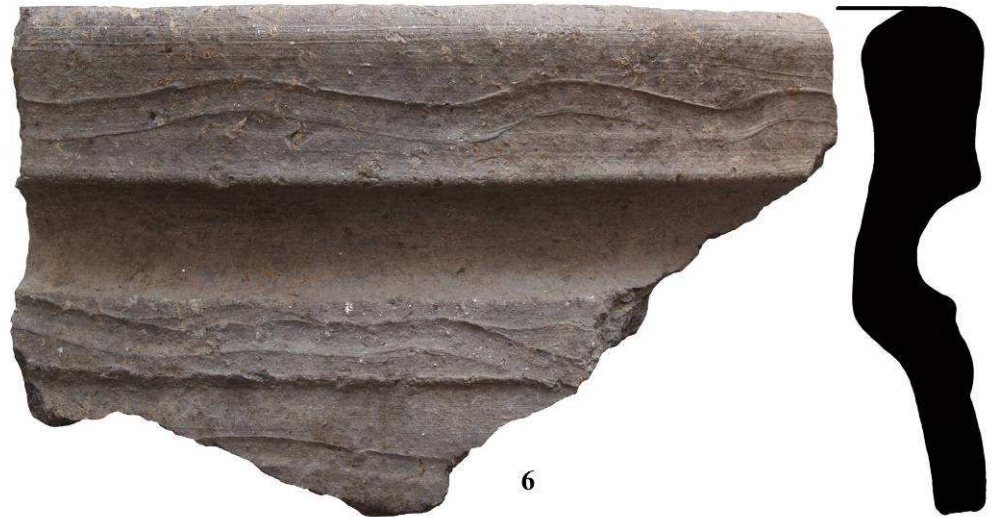
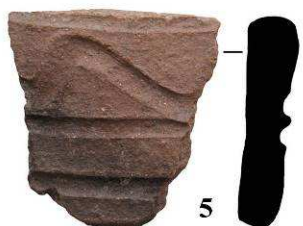
Obr. X



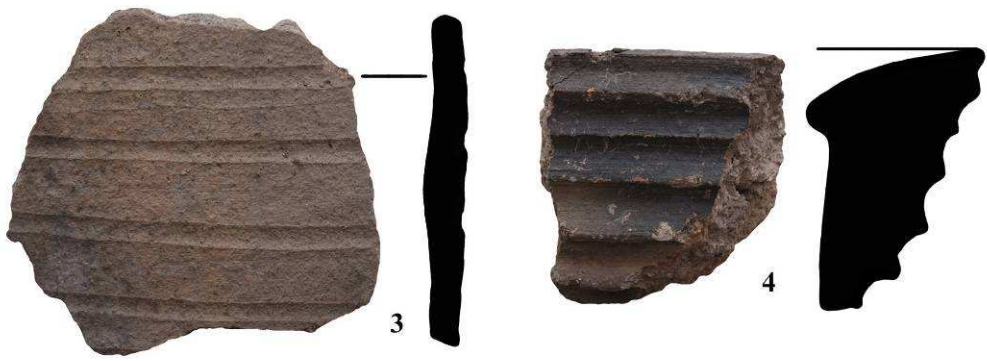
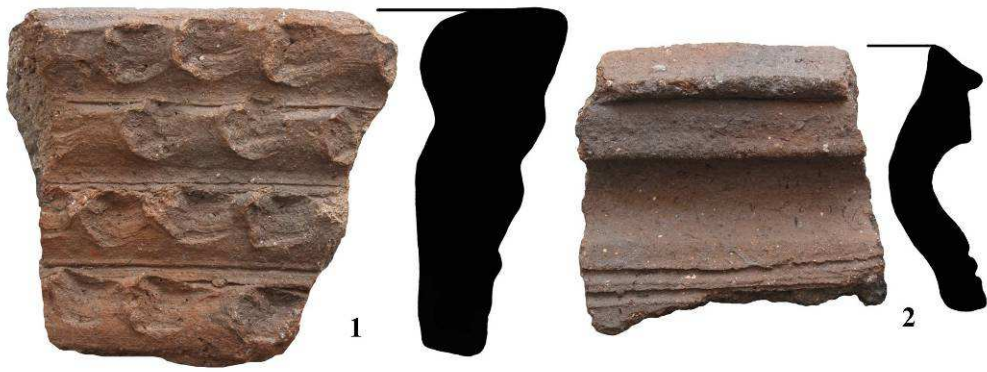
Obr. XI



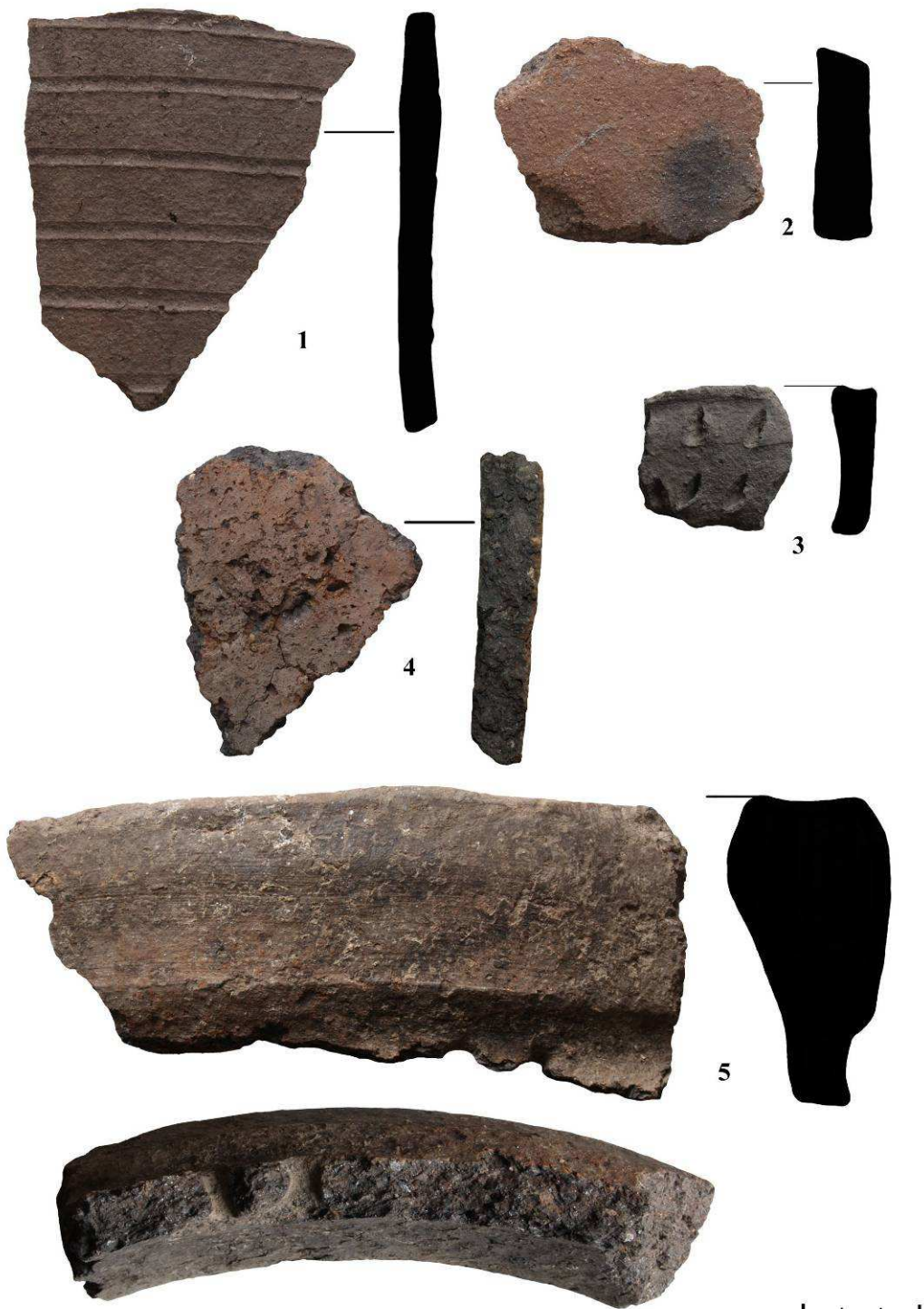
Tab. I



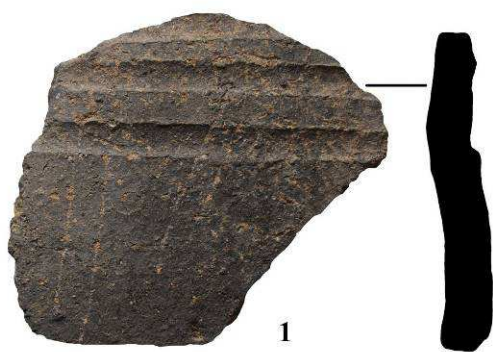
Tab.II



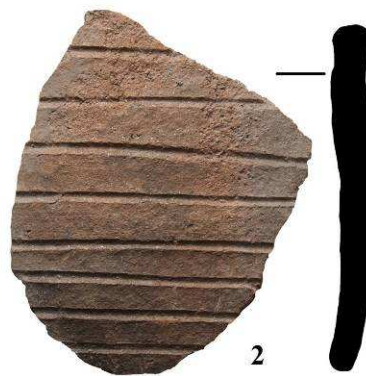
Tab.III



Tab.IV



1



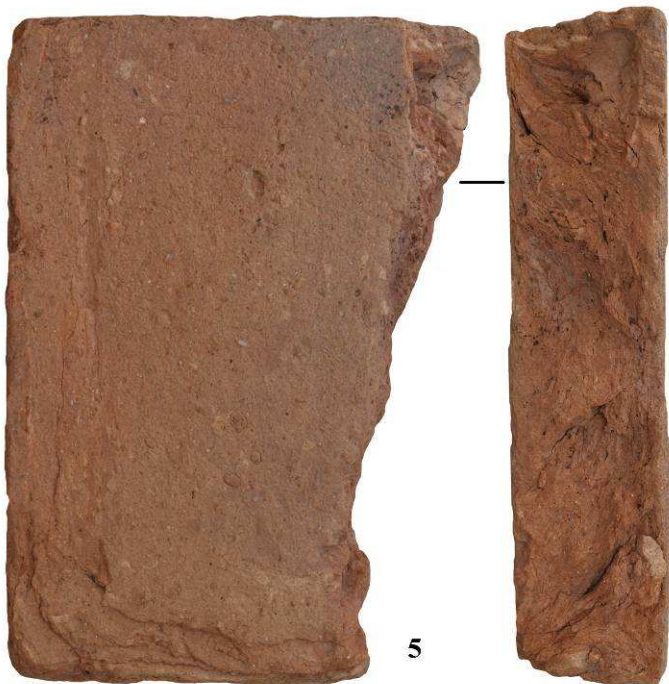
2



3



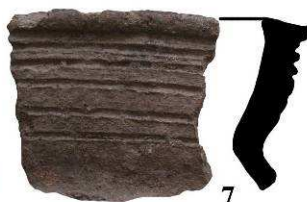
4



5



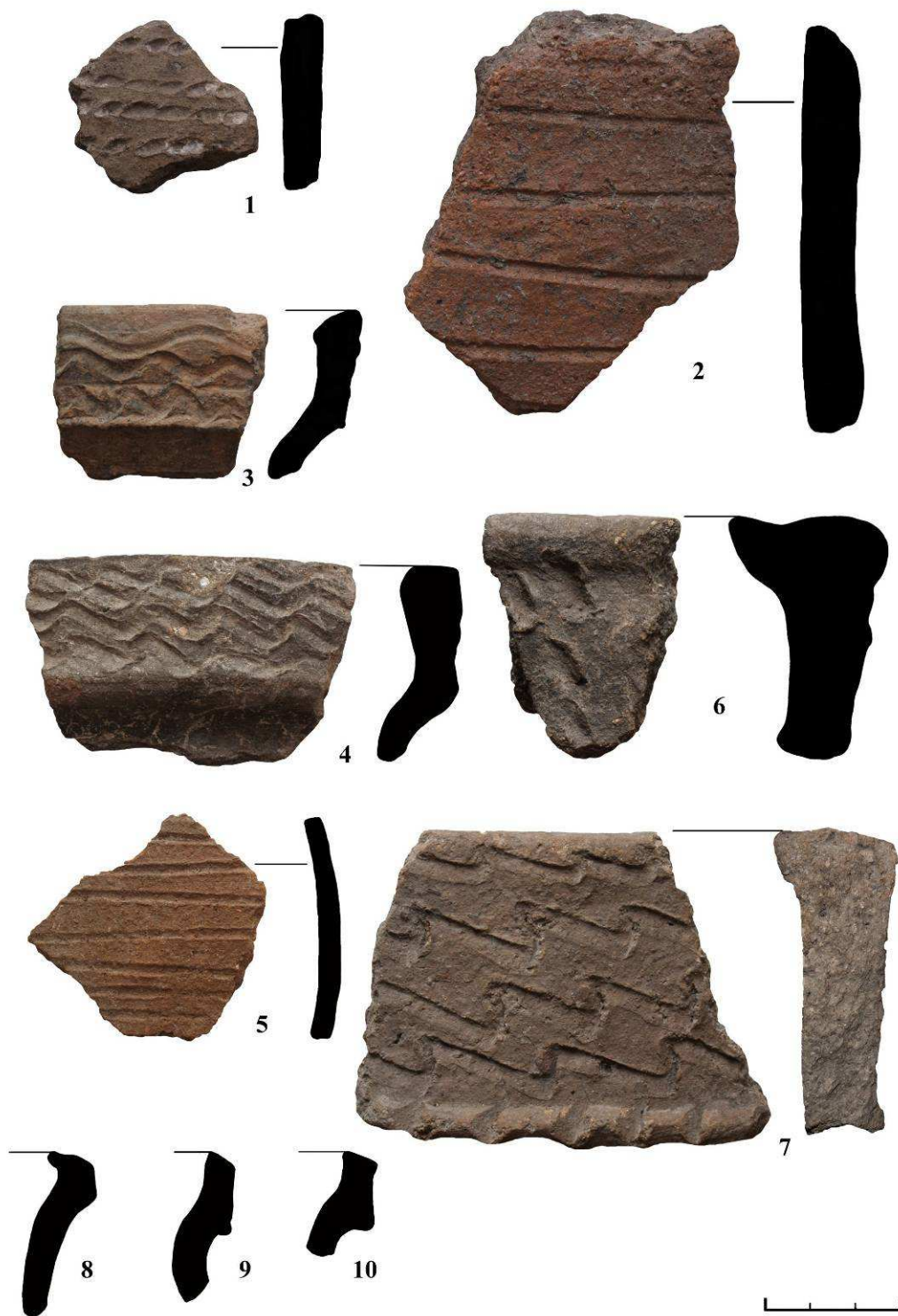
6



7



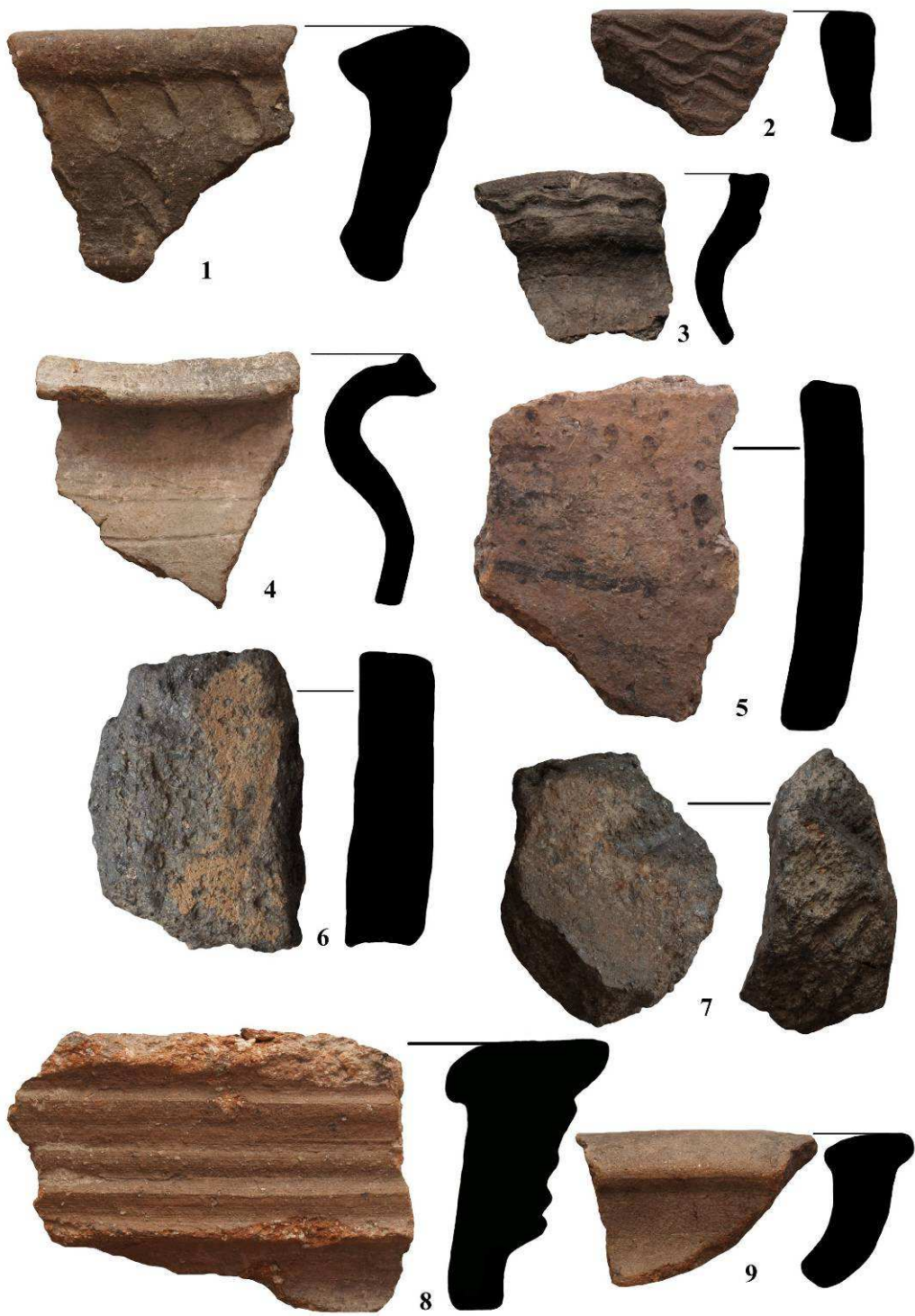
Tab. IX



Tab.V



Tab.VI



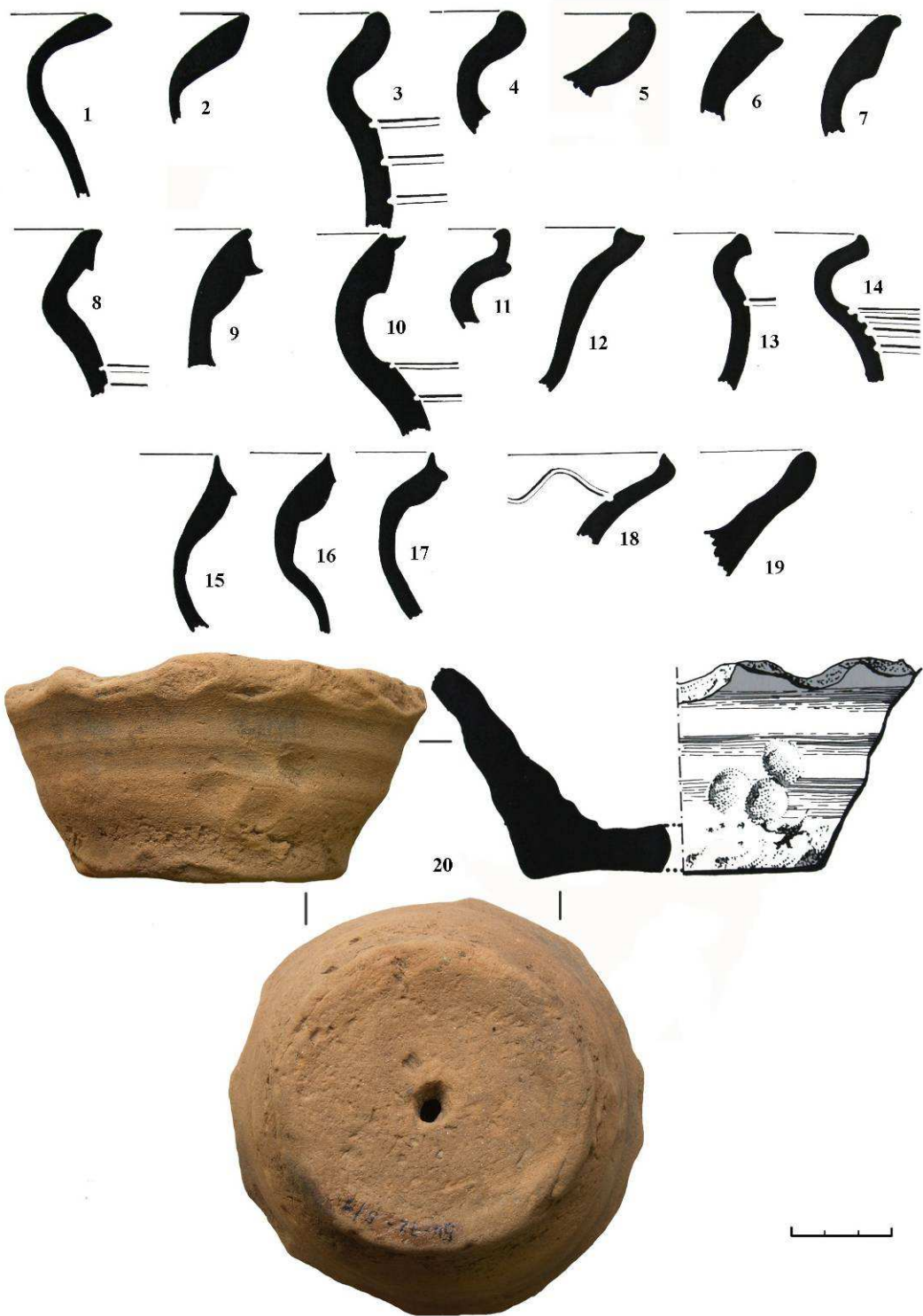
Tab. VII



Tab. VIII



Tab. X



Tab. XI