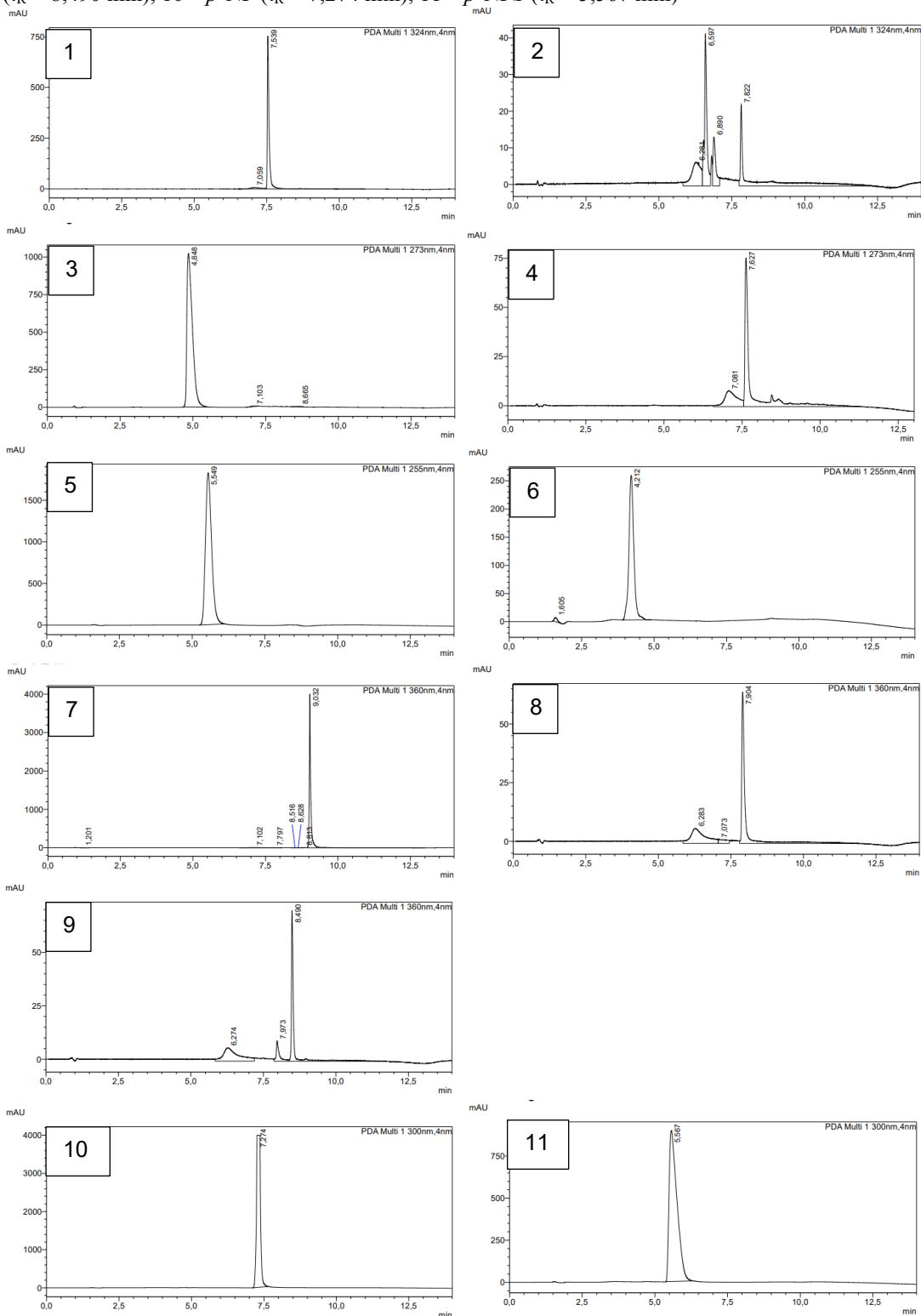


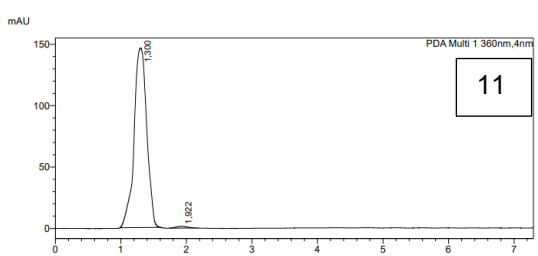
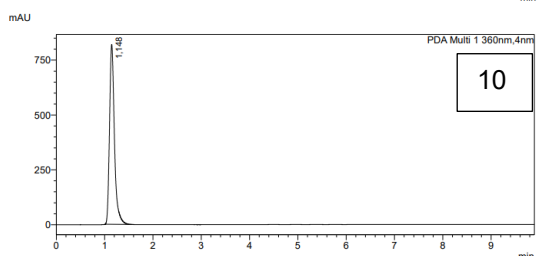
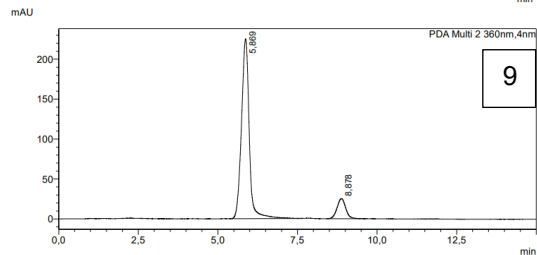
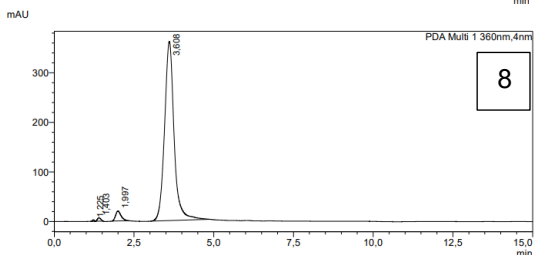
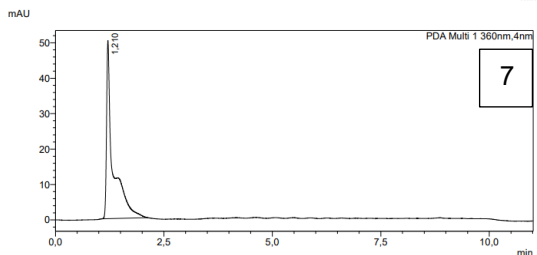
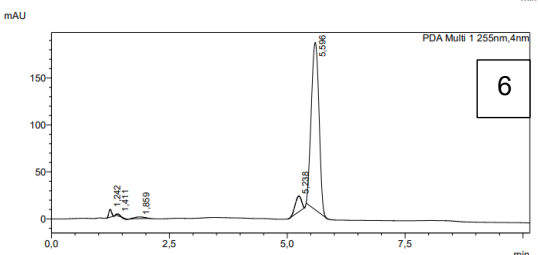
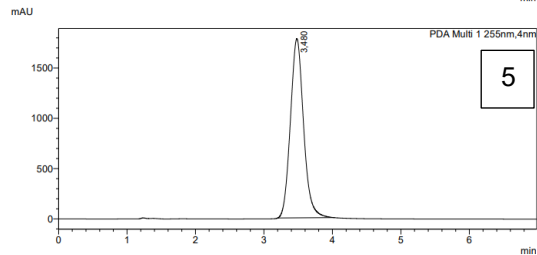
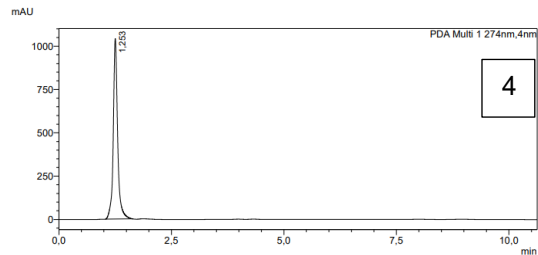
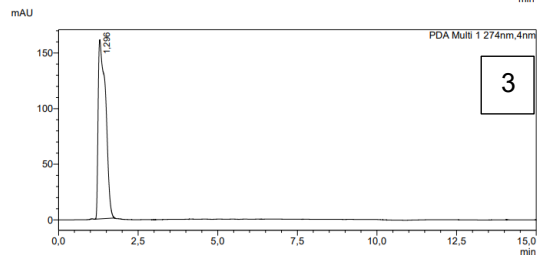
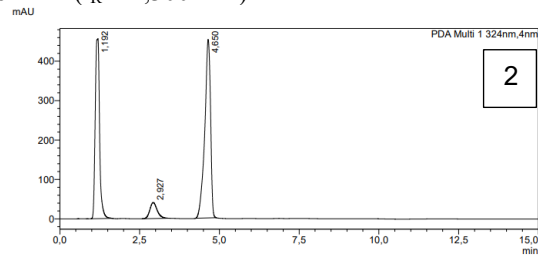
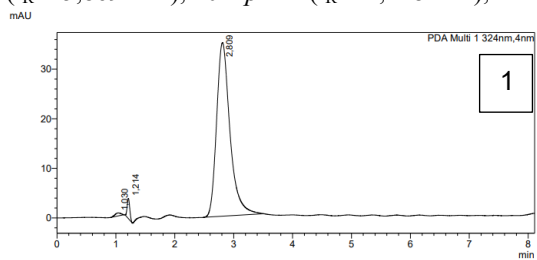
Příloha A

HPLC analýza metodou A1 na koloně C18 – chromatogramy: 1 – CAF ($t_R = 7,539$ min), 2 – CAFS ($t_R = 6,597$ min), 3 – CAT ($t_R = 4,848$ min), 4 – CATS ($t_R = 7,627$ min), 5 – DHB ($t_R = 5,549$ min), 6 – DHBS ($t_R = 4,212$ min), 7 – DHSB ($t_R = 9,032$ min), 8 – DHSBS ($t_R = 7,904$ min), 9 – DHSBS ($t_R = 8,490$ min), 10 – *p*-NP ($t_R = 7,274$ min), 11 – *p*-NPS ($t_R = 5,567$ min)



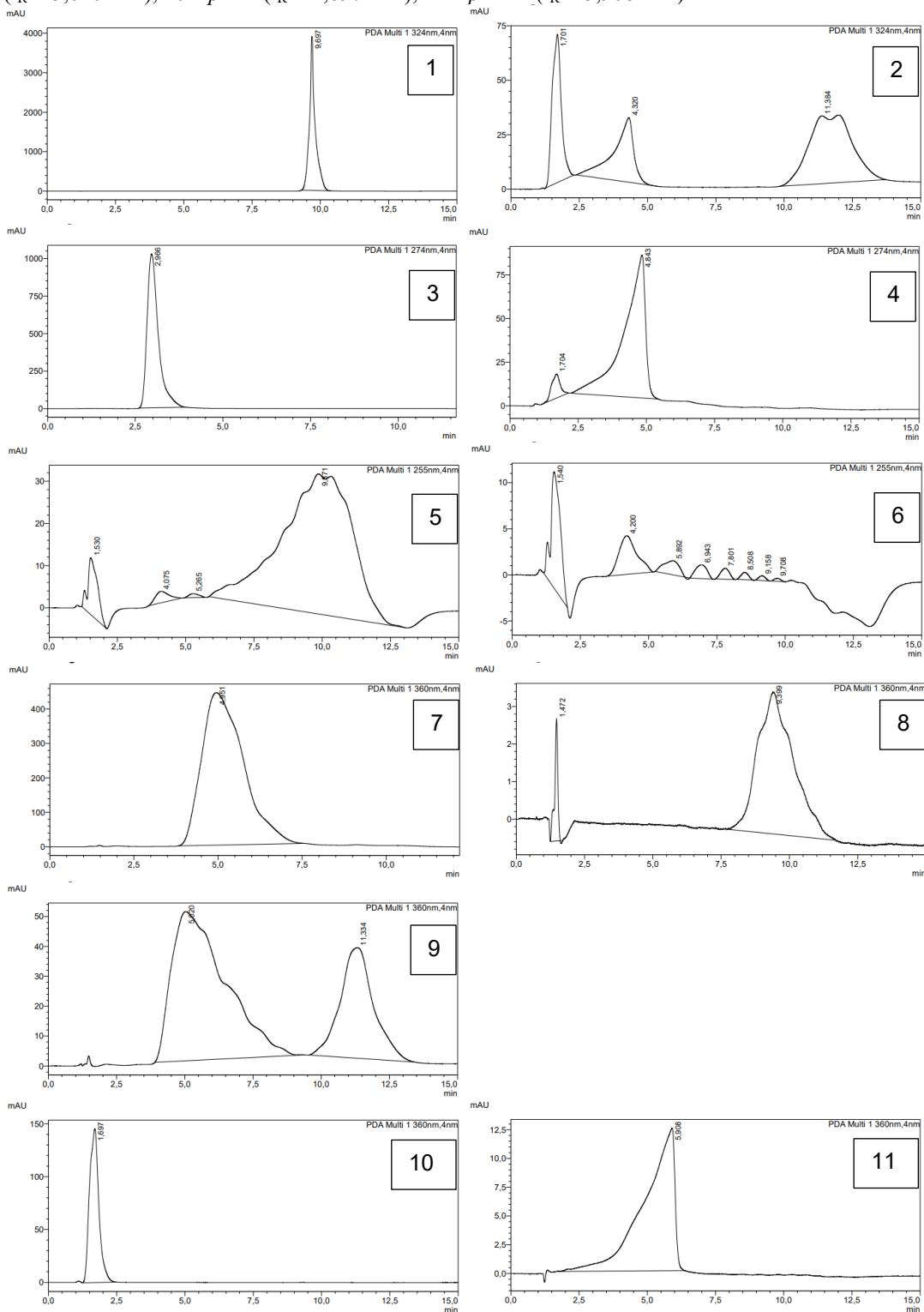
Příloha B-1

HPLC analýza metodou B1 na koloně ZIC-HILIC – chromatogramy: 1 – CAF ($t_R = 2,809$ min), 2 – CAFS ($t_R = 1,192$ min), 3 – CAT ($t_R = 1,296$ min), 4 – CATS ($t_R = 1,253$ min), 5 – DHB ($t_R = 3,480$ min), 6 – DHBS ($t_R = 5,596$ min), 7 – DHSB ($t_R = 1,210$ min), 8 – DHSBS ($t_R = 3,608$ min), 9 – DHSBS ($t_R = 5,869$ min), 10 – *p*-NP ($t_R = 1,148$ min), 11 – *p*-NPS ($t_R = 1,300$ min)



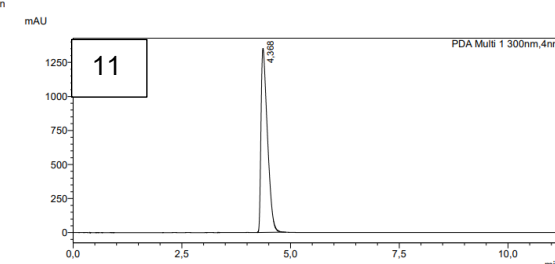
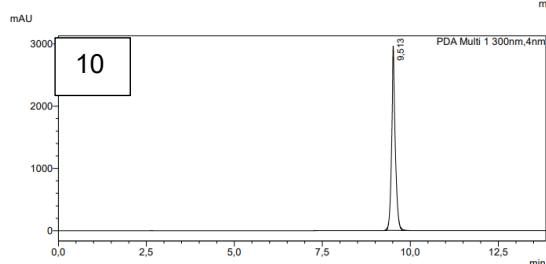
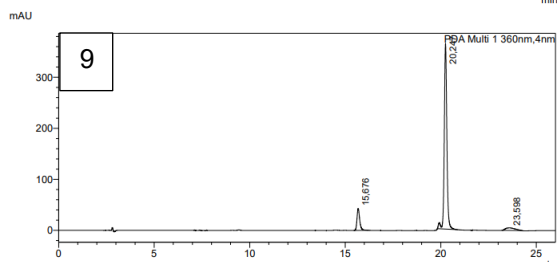
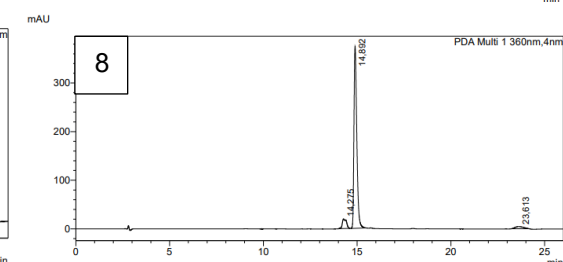
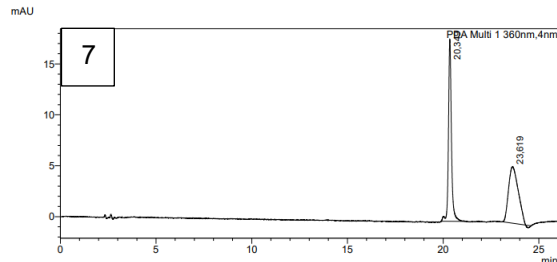
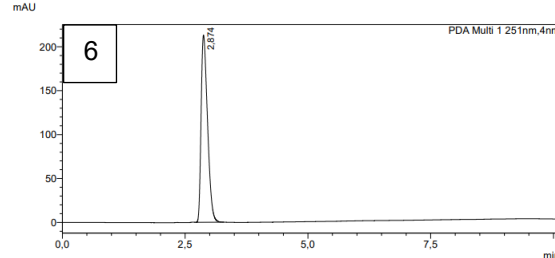
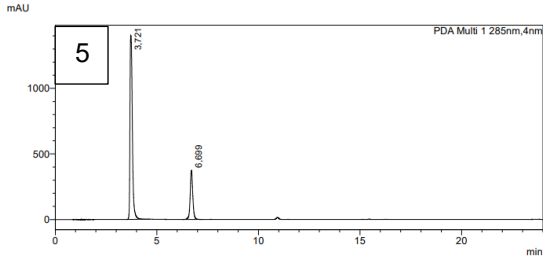
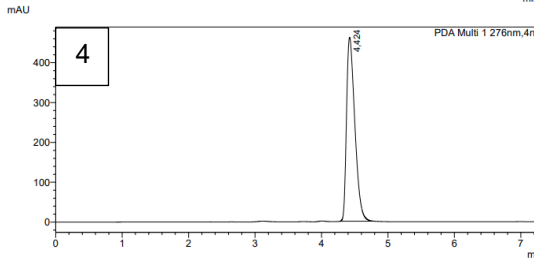
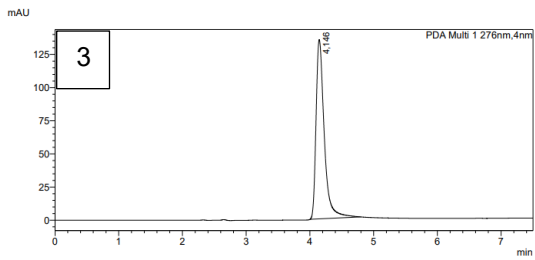
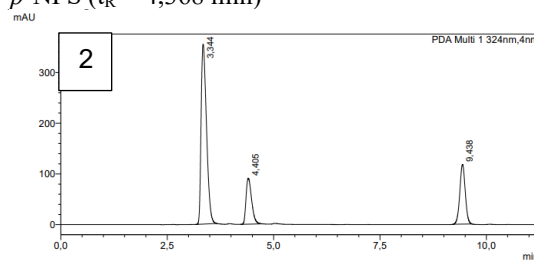
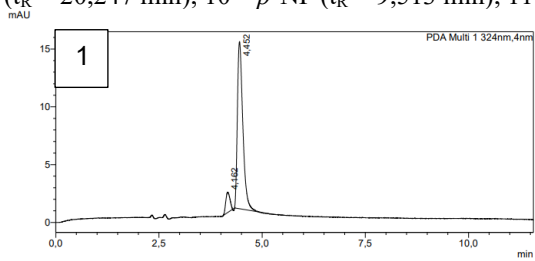
Příloha B-2

HPLC analýza metodou B2 na koloně ZIC-HILIC – chromatogramy: 1 – CAF ($t_R = 9,697$ min), 2 – CAFS ($t_R = 4,320$ min), 3 – CAT ($t_R = 2,966$ min), 4 – CATS ($t_R = 4,843$ min), 5 – DHB ($t_R = 9,871$ min), 6 – DHBS ($t_R = 4,200$ min), 7 – DHSB ($t_R = 4,951$ min), 8 – DHSBS ($t_R = 9,399$ min), 9 – DHSBS ($t_R = 5,020$ min), 10 – *p*-NP ($t_R = 1,697$ min), 11 – *p*-NPS ($t_R = 5,908$ min)



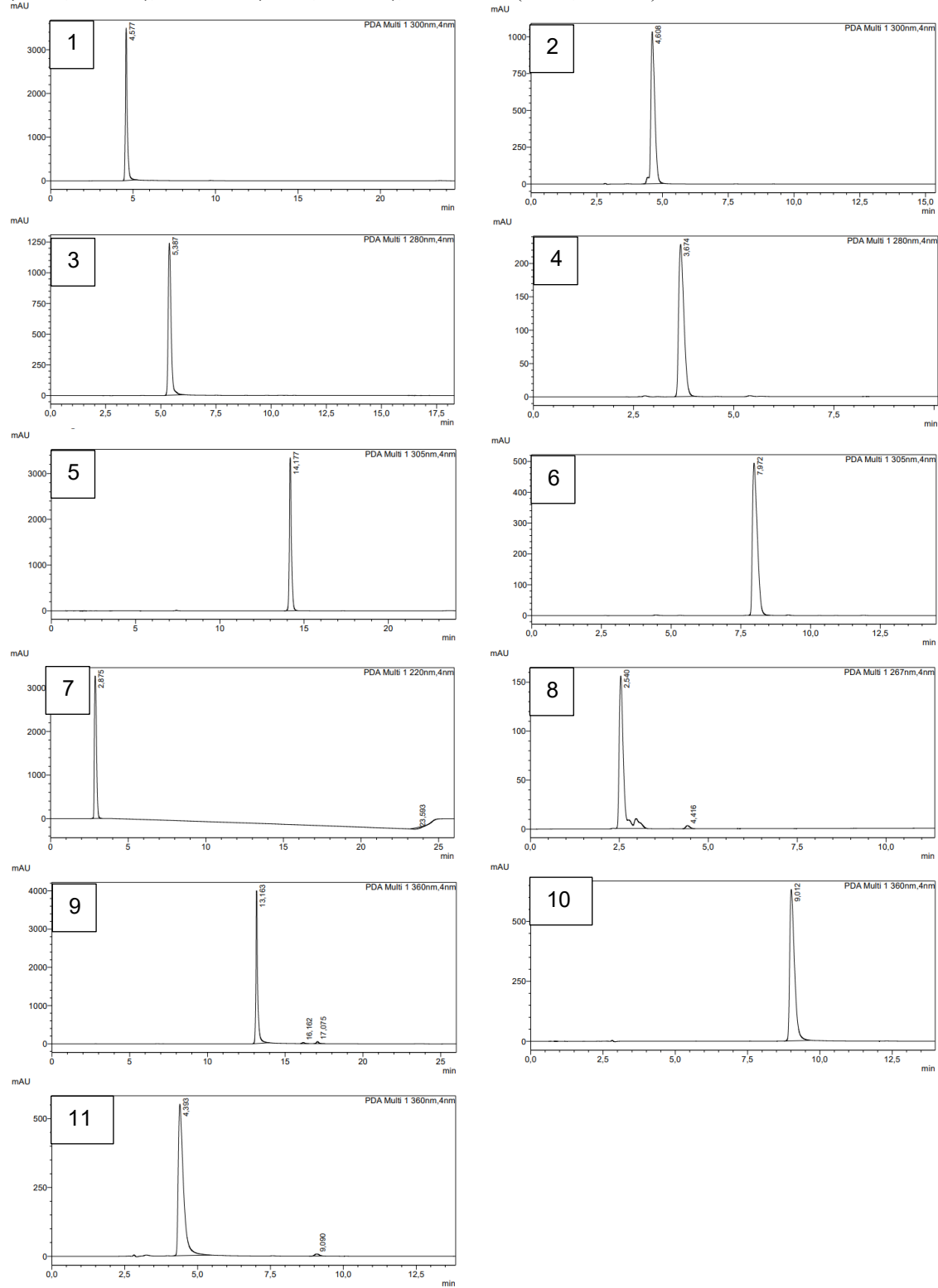
Příloha C

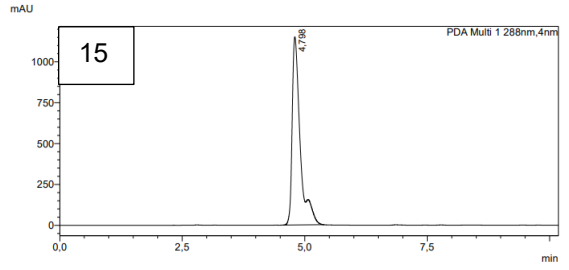
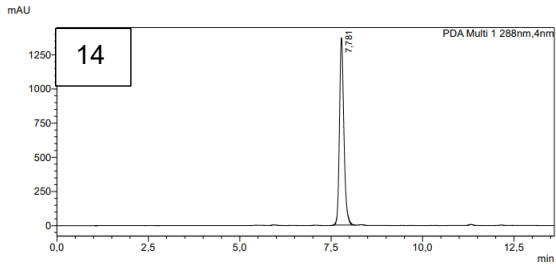
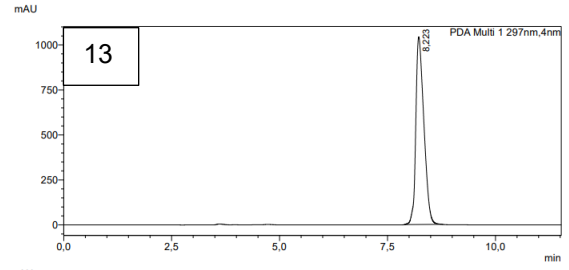
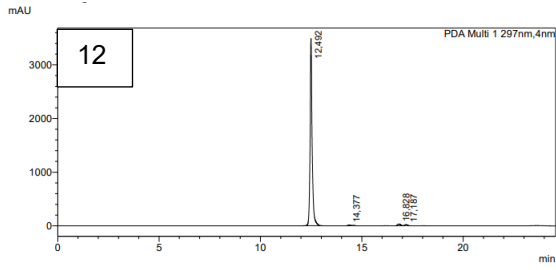
HPLC analýza metodou C1 na koloně Kinetex PFP – chromatogramy: 1 – CAF ($t_R = 4,452$ min), 2 – CAFS ($t_R = 3,344$ min), 3 – CAT ($t_R = 4,146$ min), 4 – CATS ($t_R = 4,424$ min), 5 – DHB ($t_R = 3,721$ min), 6 – DHBS ($t_R = 2,874$ min), 7 – DHSB ($t_R = 20,349$ min), 8 – DHSBS ($t_R = 14,892$ min), 9 – DHSBS ($t_R = 20,247$ min), 10 – *p*-NP ($t_R = 9,513$ min), 11 – *p*-NPS ($t_R = 4,368$ min)



Příloha D

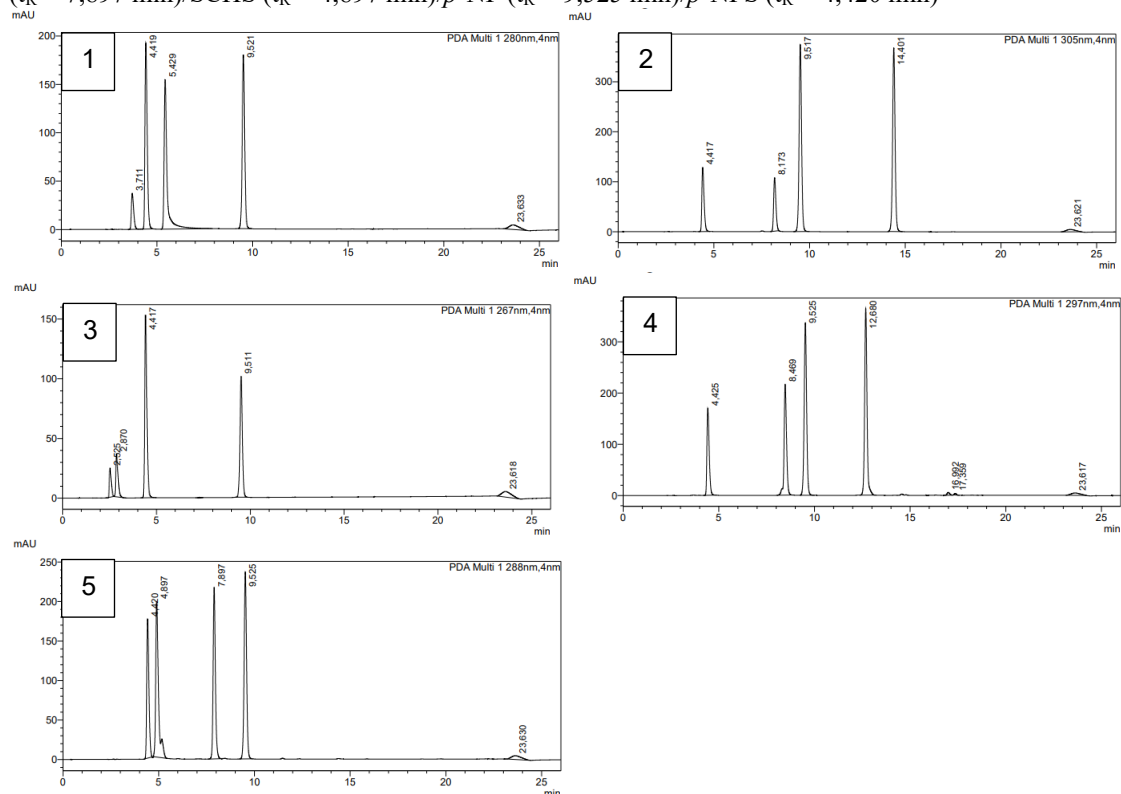
HPLC analýza metodou C1 na koloně Kinetex PFP – chromatogramy: 1 – AM ($t_R = 4,577$ min), 2 – AMS ($t_R = 4,608$ min), 3 – MECAT ($t_R = 5,387$ min), 4 – MECATS ($t_R = 3,674$ min), 5 – NG ($t_R = 14,177$ min), 6 – NGS ($t_R = 7,972$ min), 7 – PHG ($t_R = 2,875$ min), 8 – PHGS ($t_R = 2,540$ min), 9 – Q ($t_R = 13,163$ min), 10 – QS ($t_R = 9,012$ min), 11 – QSS ($t_R = 4,393$ min), 12 – SB ($t_R = 12,492$ min), 13 – SBS ($t_R = 8,223$ min), 14 – SCH ($t_R = 7,781$ min), 15 – SCHS ($t_R = 4,798$ min)



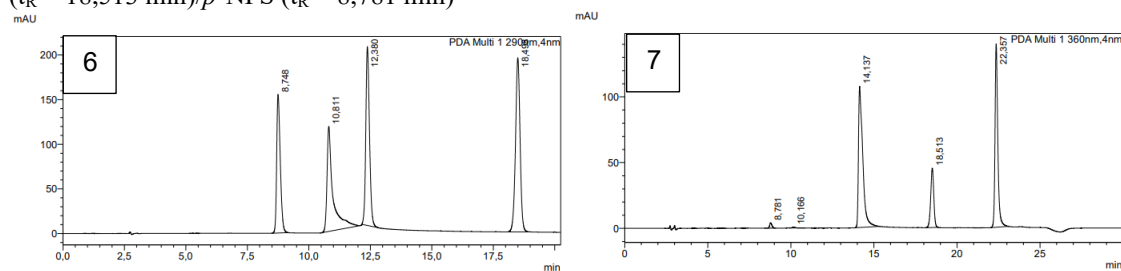


Příloha E

HPLC analýza metodou C1 na koloně Kinetex PFP – chromatogramy: 1 – MECAT ($t_R = 5,429$ min)/MECATS ($t_R = 3,711$ min)/*p*-NP ($t_R = 9,521$ min)/*p*-NPS ($t_R = 4,419$ min); 2 – NG ($t_R = 14,401$ min)/NGS ($t_R = 8,173$ min)/*p*-NP ($t_R = 9,517$ min)/*p*-NPS ($t_R = 4,417$ min); 3 – PHG ($t_R = 2,870$ min)/PHGS ($t_R = 2,525$ min)/*p*-NP ($t_R = 9,511$ min)/*p*-NPS ($t_R = 4,417$ min); 4 – SB ($t_R = 12,680$ min)/SBS ($t_R = 8,469$ min)/*p*-NP ($t_R = 9,525$ min)/*p*-NPS ($t_R = 4,425$ min); 5 – SCH ($t_R = 7,897$ min)/SCHS ($t_R = 4,897$ min)/*p*-NP ($t_R = 9,525$ min)/*p*-NPS ($t_R = 4,420$ min)



HPLC analýza metodou C1 na koloně Kinetex PFP s úpravou gradientu podle sulfátu kyseliny kávové – chromatogramy: 6 – AM ($t_R = 10,811$ min)/AMS ($t_R = 12,380$ min)/*p*-NP ($t_R = 18,498$ min)/*p*-NPS ($t_R = 8,748$ min); 7 – Q ($t_R = 22,357$ min)/QS ($t_R = 14,137$ min)/QSS ($t_R = 10,166$ min)/*p*-NP ($t_R = 18,513$ min)/*p*-NPS ($t_R = 8,781$ min)



Příloha F

HPLC analýza jednotlivých odběrů z reakční směsi sulfátu kyseliny kávové na koloně Kinetex PFP podle upravené metody C1 pro sulfát kyseliny kávové – chromatogramy: 1 – 0 min; 2 – 10 min; 3 – 20 min; 4 – 30 min; 5 – 40 min; 6 – 50 min; 7 – 60 min; 8 – 2 hod; 9 – 3 hod; 10 – 4 hod; 11 – 5 hod.

Látky eluovaly v pořadí: CAFS, *p*-NPS, CAF, *p*-NP

