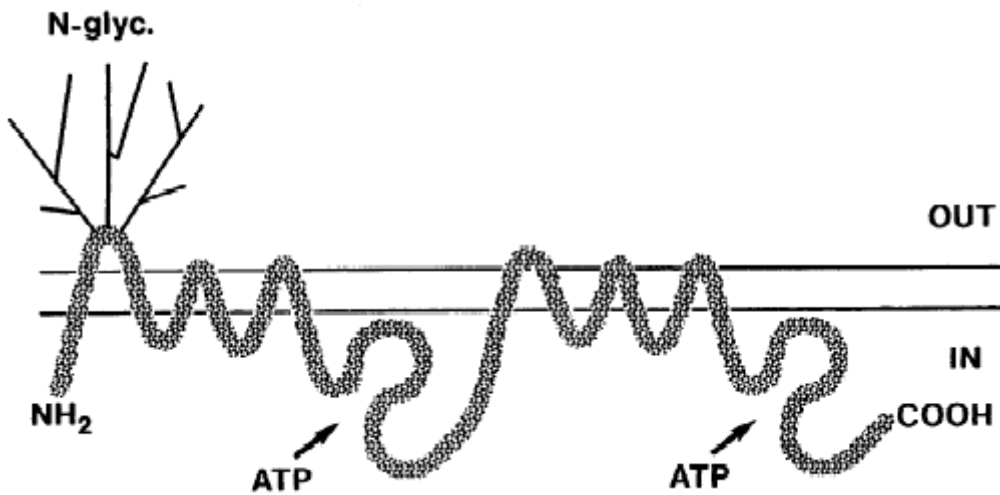
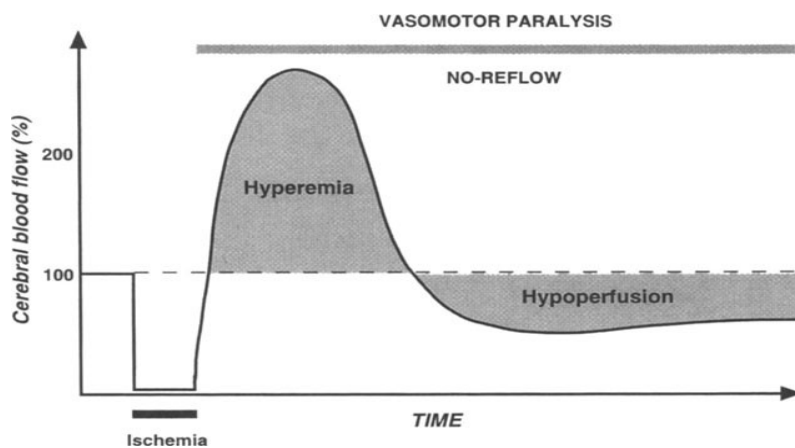


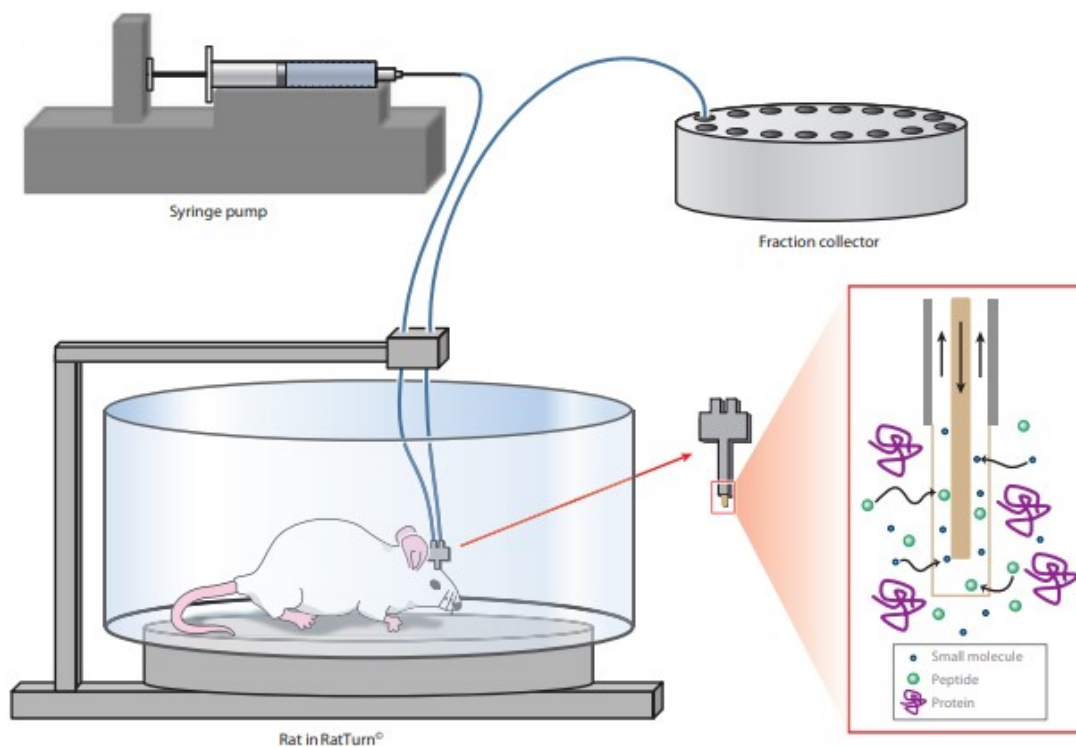
Tietz S, Engelhardt B. Brain barriers: crosstalk between complex tight junctions and adherens junctions. *J Cell Biol.* 2015;209(4):493–506



Schinkel AH. P-Glycoprotein, a gatekeeper in the blood–brain barrier. *Advanced drug delivery reviews.* 1999;36(2–3):179–194.



Iadecola C. Mechanisms of cerebral ischemic damage. In: Cerebral ischemia. Springer; 1999. s. 3–32



Kuhnline Sloan CD, Nandi P, Linz TH, Aldrich JV, Audus KL, Lunte SM. Analytical and biological methods for probing the blood-brain barrier. Annual Review of Analytical Chemistry. 2012;5:505–531

