

Univerzita Karlova

Filozofická fakulta

Ústav anglického jazyka a didaktiky



Bakalářská práce

Tomáš Savčenko

Abbreviated verbal forms and the category of emergent modal verbs in the corpora of present-day spoken English

Zkrácené slovesné formy a kategorie emergentních modálních sloves na základě korpusů současné mluvené angličtiny

Praha 2021

vedoucí práce: Mgr. Ondřej Tichý, Ph.D.

Poděkování

Děkuji vedoucímu své bakalářské práce Mgr. Ondřeji Tichému, Ph.D. za veškerou vstřícnost, rady a věnovaný čas, bez kterých by tato práce těžko vznikla.

Prohlašuji, že jsem bakalářskou práci vypracoval samostatně, že jsem řádně ocitoval všechny použité prameny a literaturu a že práce nebyla využita v rámci jiného vysokoškolského studia či k získání jiného nebo stejného titulu.

V Praze dne 11. srpna 2021

.....

Souhlasím se zapůjčením bakalářské práce ke studijním účelům.

I have no objections to the BA thesis being borrowed and used for study purposes.

Abstract

The assumption of this work is that the shortened verbal form *gonna* is undergoing a process of grammaticalization. The aim of this work is to test and describe this process by comparing *gonna* with its parent phrase *be going to*. The theoretical part introduces modality and its general structure and the English modal system with a focus on modal verbs from synchronic and diachronic perspective. The category of ‘emergent modals’ that includes *gonna* and similar verbs (*wanna, gotta, etc.*) is introduced followed by the introduction of the grammaticalization theory. The thesis that the practical part is testing is that there is a functional divergence between *be going to* and *gonna* as a result of a grammaticalization process. This divergence is thought to gather future functions in *be going to* and modal meanings in *gonna* as is assumed by its participation in ‘emergent modals’. The practical part includes quantitative corpus analysis that showed a growing frequency of *gonna* through the 1990’s, 2000’s and 2010’s, which supports its grammaticalization process, and unclear frequency trend for *be going to*, which suggests these phrases are not competing with each other functionally. Qualitative part presents the distribution of future and modal meanings of *gonna* on a sample of 200 concordance lines from the 90’s and the 10’s. It showed equal distribution of future and modal functions without statistically significant change in time. This leads to the rejection of the hypothesis that *gonna* acquires modal meanings at the expense of future ones. Instead, there is a variation in the grammaticalizing *gonna*.

Keywords: modality, emergent category, grammaticalization, corpora, spoken English, abbreviated verbal forms, auxiliary verbs

Abstrakt

Předpoklad této práce je, že zkrácená slovesná fráze *gonna* prochází procesem gramatikalizace. Cíl této práce je tento proces ověřit a popsat porovnáním *gonna* se svou mateřskou frází *be going to*. Teoretická část představuje modalitu a její obecnou strukturu a anglický modální systém s důrazem na modální slovesa ze synchronního i diachronního pohledu. Kategorie emergentních modálních sloves obsahující *gonna* a podobná slovesa (*wanna, gotta, etc.*) je představena, následována představením teorie gramatikalizace. Hypotéza, jež je testována v praktické části, je zdali dochází k funkčnímu rozdělení mezi *gonna* a *be going to* jako důsledku gramatikalizačního procesu. Toto rozdělení předpokládá hromadění budoucích funkcí u *be going to* a modálních u *gonna*, což vyplývá z jeho participace v “emergentních modálních slovesech”. Praktická část zahrnuje kvalitativní korpusovou analýzu, jež ukázala rostoucí frekvenci *gonna* v 90., 00. a 10. letech, což podporuje jeho gramatikalizační proces a nejasný trend frekvence *be going to*, což naznačuje, že tyto fráze spolu funkčně nesoupeří. Kvalitativní část představuje distribuci budoucích a modálních funkcí *gonna* na vzorku 200 konkordančních řádků z 90. a 10. let. Ukázala rovnocennou distribuci budoucích a modálních funkcí bez statisticky významné změny v čase. Toto vede k zamítnutí hypotézy, že *gonna* získává modální funkce na úkor budoucích. Místo toho existuje variace v gramatikalizujícím se *gonna*.

Klíčová slova: modalita, pomocná slovesa, emergentní kategorie, gramatikalizace, korpusy, zkrácené slovesné formy

Abbreviations

cvcə – consonant-vowel-consonant-schwa

i.p.m. – items per million

OE – Old English

PDE – Present-Day English

Content

1. Introduction.....	1
2. Theoretical Background.....	1
2.1. Defining auxiliarihood and modality.....	1
2.2. Modality in English	4
2.2.1. Functions of Modality	4
2.2.2. Formal Expression of Modality.....	6
2.2.3. History of English Modality.....	7
2.2.4. Emergent Modals	8
2.3. Grammaticalization as Emergent Linguistic Behaviour.....	9
2.4. Grammaticalization and Lexicalisation	12
3. Objectives and Hypothesis.....	13
4. Quantitative Material and Methodology	16
5. Qualitative Material and Methodology	17
6. Results and interpretation	20
6.1. Quantitative Results.....	20
6.2. Qualitative Results.....	23
6.2.1. Distribution of modal and future functions	23
6.2.2. Close-reading of <i>gonna</i> in 1990's	26
6.2.3. Close-reading of <i>gonna</i> in 2010's	29
7. Conclusion	31
8. Resources	33
9. Resumé.....	34
10. Apendix	36

List of Figures

Figure 1 Krug's system of emerging modals (including the central modal will)	9
Figure 2 Frequency of gonna and going in time in The Movie Corpus	21
Figure 3 Frequency of gonna and going in time in the sum of both corpora	22
Figure 4 Frequency of gonna and going in time in The TV corpus	22
Figure 5 Distribution of modal and future functions of gonna in time	24
Figure 6 Distribution of modality type of gonna in time	24
Figure 7 Distribution of epistemic modality subtypes of gonna in time	25
Figure 8 Distribution of deontic modality subtypes of gonna in time	25
Figure 9 Frequency of future function of gonna in time	26

List of Tables

Table 1 Modal categories according to Palmer (2001)	4
Table 2 Deontic and dynamic modality	5
Table 3 Epistemic modality	6
Table 4 All corpora in the 1990's	20
Table 5 All corpora in the 2000's	20
Table 6 All corpora in the 2010's	21
Table 7 The distribution of modal and future functions of gonna in the 1990's and 2010's ...	23

1. Introduction

The aim of this work is to study the change in the English system of modal auxiliary verbs that has long been thought to be reorganizing. The focus is on a class of emerging modal expressions labelled as ‘emergent modals’ (Krug 2000) and especially on the shortened form *gonna* as a counterpart of *be going to*. The theoretical part will present grammaticalization theory which will serve as a tool to describe and interpret the diachronic changes leading from the phrase *be going to*, which is typically used as a marker of future tense, to *gonna*, a syntactically independent word whose semantics has been changing to include modal functions according to some linguists like Manfred Krug upon whose theory this work builds. Krug (2000) claimed that phrases like *be going to*, *want to*, *have got to*, *etc.* are undergoing a process of grammaticalization leading to the creation of a new modal subcategory within the English modal system, which he called ‘emergent modals’, that contains the shortened *gonna*, *wanna*, *gotta*, *etc.* The claim of this work is that the grammaticalization process leads to a separation of future and modal functions between the phrases and their shortened counterparts, i.e. emergent modals. The theoretical part will try present a framework for synchronic and diachronic description of modality and its types, modal auxiliary verbs and use the grammaticalization theory to describe the change in the English modal system on the example of *gonna*.

The practical part will present a quantitative and a qualitative corpus study of *be going to* and *gonna* which will interpret the frequency changes of the two items within the grammaticalization framework and describe the distribution of future and modal functions of *gonna*. The results can be used as a contribution to the description of English grammar in its contemporary state, taking into account the recent change within its modal auxiliary system.

2. Theoretical Background

2.1. Defining auxiliarihood and modality

Defining terms related to modality proves to be a demanding task. The ultimate term that needs to be clarified for this work is *modal auxiliary verb* which is the proposed label for the specific uses of *gotta*, *haft*, *wanna* and primarily *gonna*, which is the main focus of this study. Quirk et al. (1985) defines a list of criteria of auxiliary verbs. *Gonna* and the rest of the group seem to have troubles following them – they are in accord with four: 1) operator in negation with *not*, 2) emphatic positive, 3) operator in reduced clauses, 4) independence of subject, and they violate the other four: 5) negative and verb contractions, 6) Inversion of subject and operator, 7) pre-adverb position and 8) quantifier position. What are the arguments

to insist on calling *gonna* and similar verb forms auxiliary verbs if they follow only half of the proposed criteria for English auxiliary verbs? The answer is the logic with which these criteria were set up. They are descriptive criteria based on the traditional system of English auxiliary verbs and core modals. They were derived a posteriori in line with the prototypical auxiliary verbs *be*, *do*, *have* to match their characteristics. Therefore, it is only natural that other and diachronically later verbs such as *gonna* do not match those criteria. We need to consider a more general cross-linguistic definition of auxiliary verbs which is created a priori, without the intention to match specific words or phrases¹. The following definition should be unproblematic to capture the general gist of auxiliary verbs - auxiliary verb is a verb whose semantics is weakened and serves functions more grammatical in nature and that complements the meaning of a lexical verb. *Gonna*², which is already semantically bleached and serves grammatical functions when followed by a verb phrase, may arguably be considered an auxiliary in PDE, especially as a shortened syntactically autonomous form.

The claim of this work is that the nature of this auxiliary is changing into a modal auxiliary. The task of proving this claim requires more specific delineation of the domain of modality which is rather vague by nature. Quirk et al (1985, 127-128) defines four additional criteria for modal auxiliaries and they all apply for *gonna*; they are 9) construction with bare infinitive, 10) finite functions only, 11) no 3rd person inflection and 12) abnormal time reference. However, based on the previous discussion, one cannot rely on the synchronic features of English modal auxiliary verbs. On the other hand, they might be helpful in constructing a picture of the current English modal system to see what grammatical ‘space’ *gonna* is entering.

Before describing English modal system with which *gonna* is becoming increasingly associated, it is important to define modality as I did with the definition of modal auxiliary verb. A sound definition of modality will help to establish what modal features and functions *gonna* is acquiring that arguably make it modal.

As with many general linguistic terms, there is a variety of definitions. Since the primary objective of the present work is not to choose the most suitable one, modality and consequently modal auxiliary verbs will be approached from a rather general perspective. This allows wide acceptance by most linguistic approaches. Another reason for omitting too specific

¹ This is not to say that Quirk et al.’s definition is wrong, only that its purpose is to describe one synchronic slice of the English verbal system and when we want to talk about new items that enter it diachronically, we need to consider more general cross-linguistic terminology to be able to assess that status of the new items.

² From now on I will mainly talk about one verb, i.e. *gonna*, it is the main focus of the present work, chosen from the proposed new group of verbs

characterisation is to enable the widest overlap with various concepts of modality. First important distinction is that between mood and modality. In general, languages tend have one or the other- they are two different systems for marking what can be roughly drawn as realis and irrealis continuum. Realis marks statements as facts, as something known or observable. Irrealis is the opposition; it marks statements as imaginary, hypothetical, unknown, or vague. Modality and modal verbs fall under the domain of irrealis (Palmer 2001, 104).

Joan Bybee (1994) mentions problems of defining modality. Cross-linguistic research reveals a number of linguistic features that she uses to problematize even the more general definition ‘that modality is the grammaticization of speakers’ (subjective) attitudes and opinions’ (Bybee et al 1994, 176). For the present scrutiny, I find it useful to follow Hansen and de Haan (2009) and distinguish two aspects of modal systems. One that pertains to the formal features of modals and another that entails their meaning. Hansen (2018, 260), in accord with Bybee, describes modal expressions as ‘means of expressing modality which have undergone a grammaticalization process’. Hansen and Haan (2009) also postulated two key features of modal expressions and identified them as syntactic autonomy and semantic polyfunctionality.

Palmer (1986 4f) points to different degrees of grammaticalization of modal systems. Using the first of Hansen and Haan’s modal features, different degree of grammaticalization would reflect different degrees of syntactic autonomy—Palmer notes that:

the markers of modality may be modal verbs, clitics or particles. Whether these are grammatical or not can only be decided in terms of the degree to which they have syntactic restrictions and the extent to which they can be defined as a limited rather than open-ended system of items. (ibid, PAGE)

The second feature - semantic polyfunctionality - would differ in the abstractness of the modal meaning, ranging from more concrete to more abstract (thus more grammatical) and typical of modals like possibility, necessity or volition. When we consider the properties of *gonna* from Hansen and Haan and Palmer’s point of view, it seems plausible to class it as a marker of modality. It is syntactically autonomous which is in accord with markers of modality in the form of modal verbs. Its semantics needs closer attention to bring up contexts that would show any kinds of modal meanings. This will be shown in the practical part of this work. At the present, it is hopefully uncontroversial to say that *gonna* serves as a marker of future tense which is liable to modal interpretations by the very nature of future tense as was noted by Lyons (1977, 677, 816, seen in Palmer 2001, 105):

Futurity is never a purely temporal concept; it necessarily includes an element of prediction or some related notion.

What is conventionally used as a future tense (...) is rarely, if ever, used solely for making statements or predictions, or posing or asking factual questions, about the future. It is also used in a wider or narrower range of non-factive utterances, involving supposition, inference, wish, intention and desire.

To move from a more general conception of modality and definition of auxiliaryhood to a more specific context of the English language, see next chapter.

2.2. Modality in English

We need first to outline the English modal system to better understand the position of the new subcategory of verbs including and similar to *gonna* so that we can later draw conclusions on the similarity between *gonna* and the traditional means of expressing modality in English in terms of function, form or historical development. This will set up a framework for evaluating the claim that *gonna* is a part of a new auxiliary modal verb subcategory.

2.2.1. Functions of Modality

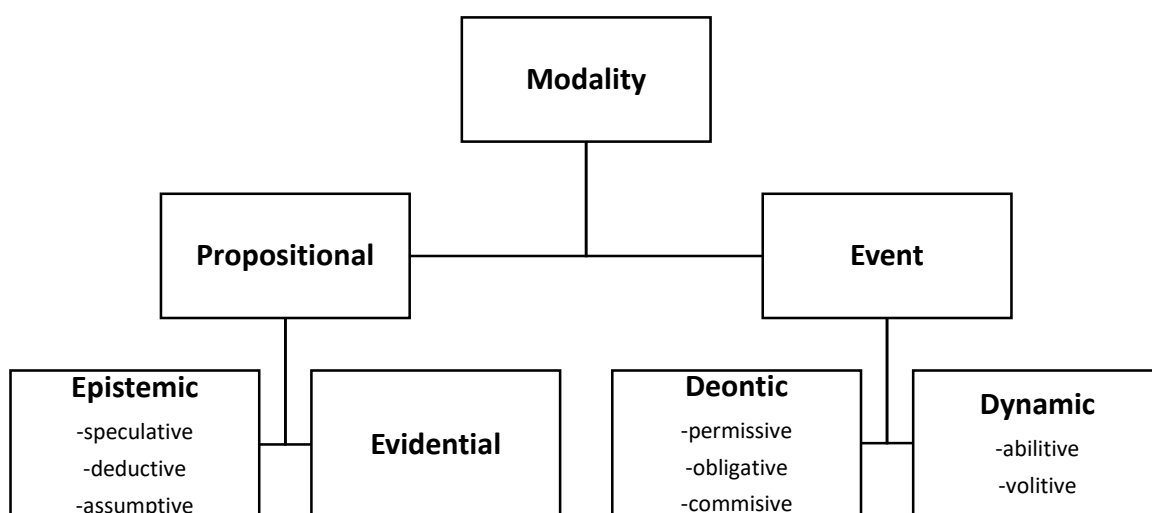


Table 1 Modal categories according to Palmer (2001)

Modality in English can be expressed by modal verbs, adverbs, or to a limited degree by subjunctive. Only modal verbs are relevant for this work. Table 1 above displays general functions of modality found across languages as stated by Palmer (2001). The coarsest distinction of modal functions is that between propositional and even modality. From the

domain of propositional modality, English modal verbs can express epistemic modality. Evidential modality is not grammaticalized in English. Both types of event modality, i.e. deontic and dynamic, can be expressed by English modal verbs. The distinction between the different kinds of modality that can be expressed by English modal verbs is following:

A) **Event modality** is concerned with events that have not taken place but potentially might (Palmer 2001, 70). It can be further distinguished to deontic and dynamic modality. Deontic modality is used to talk about obligations (deontic obligative) like in the example b) in table 2 where Amy is obliged to go. Example a) shows permissions (deontic permissive) as Amy is allowed to go and example c) shows a promise (deontic commissive) as Peter is promised the book. Dynamic modality is used to express abilities (dynamic abilitive) as in d), which expresses that Karen is able to run fast, and willingness (dynamic volitive) as in e) which expresses Karen’s will to let the addressee stay.

a) Amy may/ can go now.	Permissive	Deontic modality
b) Amy must/ has to go now.	Obligative	
c) Peter shall have the book tomorrow.	Comissive	
d) Karen can run fast.	Abilitive	Dynamic modality
e) Karen will let you stay.	Volitive	

Table 2 Deontic and dynamic modality

B) **Propositional epistemic modality** is concerned with the reliability of speaker’s statements. More specifically, it is used in sentences where speakers produce judgements based on what they know or believe (Palmer 2001, 24). Together with evidential modality, it is a type of propositional modality. However, English does not express evidential modality in a grammaticalized way, i.e. it does not have grammatical features for sensory data (e.g. seeing, hearing) or for the source of information (e.g. (un)known source, general knowledge) that would express the reliability of speaker’s claims. Speculative epistemic modality in example 1) in table 3 bases the reliability of speaker’s statement about Malcolm on his or her subjective beliefs and thoughts. Deductive epistemic modality in b) expresses a higher degree of reliability in

the statement as there is usually evidence, for example a light in the window. Finally, epistemic assumptive modality in c) is used in statements that rely on some recurrent and general facts, for example, Patrick is always at home at a certain time.

a) Patrick may be at home.	Speculative	Epistemic modality
b) Patrick will be at home.	Deductive	
c) Patrick must be at home.	Assumptive	

Table 3 Epistemic modality

It is also worth noting that both deontic and epistemic modality are facultatively expressed in a sentence by modal verbs in English. However, epistemic modality as a part of the meaning of grammatical mood is expressed obligatorily in a finite verb phrase (Dušková et al 2012, 185-186), e.g. indicative mood in *I saw him yesterday*.

2.2.2. Formal Expression of Modality

English modal verbs form a separate group from lexical verbs and other auxiliary verbs. They differ in their formal properties and semantics. Dušková et al (2012, 180) define them as a close-class group of verbs including nine items: *can, may, must, shall, will, ought, need, dare* and *used to*. She notes four formal features that they share with auxiliary verbs:

- 1) They are negated by the following negative particle *not*.
- 2) They form questions by inversion.
- 3) They can stand as pro-forms of VP's in the same contexts as auxiliary verbs.
- 4) They are followed by infinitive without *to* (the exceptions are *ought to* and *used to*)

Dušková points out two distinctive formal features and one semantic of English modal verbs:

- 1) They lack 3rd person singular *-s*.
- 2) They only have finite forms, usually present and past, some have one.
- 3) They have meaning (unlike auxiliary verbs) which is not independent (unlike lexical verbs) and which can modify the meaning of lexical verbs based on the agent's ability to 'do' the action or the facticity of the action. (ibid, 180-184)

2.2.3. History of English Modality

Past development of English central modals is relevant for this work since the grammaticalization paths³ (i.e. the general patterns of language change) leading to the abbreviated modal expressions like *gonna* are recurring both diachronically and across languages. The knowledge of the past development can therefore clarify the current state of the English verbal system.

In Old English, some lexical verbs were used as modals, but they were not a grammaticalized closed-class as in Present-Day English. The predominant system to mark the realis-irrealis continuum in Old English was the system of mood, where the subjunctive mood marked the irrealis utterances. Certain verbs (e.g. *willan*, *magan*) could be used as modals to a certain degree – they were limited to some modal contexts, e.g. obligation, condition, etc. Their use was correlated with the subjunctive inflection which was gradually eroding from the OE verbal system. For this reason, some authors propose what is called a ‘substitution theory’ (Ogawa 1994), which at first seems to be in accord with Palmer’s more general claim mentioned in chapter 1 that says languages tend to have either mood or modality system to mark the realis-irrealis continuum. Ogawa also adds that if some languages have both systems (e.g. French, Italian and to a limited degree Old English), one gradually prevails as is the case of English. The substitution theory says that modal verbs in English systematically replaced the subjunctive mood. Hiroshi Ogawa (1994) argued against this theory on the basis of the fact that while modals could be used in any subjunctive context, it did not work vice versa- subjunctive mood could not be used in any context where there previously was a modal verb. This feeds to the notion that behaviour of language items is determined by their diachronic development. OE subjunctive and lexical verbs used in modal contexts naturally were not convertible because they come from different sources. Ogawa also did not find any significant diachronic change in the frequency of modal verb use in different texts between the early and late Old English period. He claims that modal verbs in Old English were used stylistically to specify a particular modal meaning which was one among many when a subjunctive inflection was used. Together with the constant frequency in time, he argued that the use of modals together with the subjunctive mood was a variation- not a sign of systematic language change. Modals were thus a ‘new invention’ that was used as a stylistic tool and not a replacement of the subjunctive system that was part of the mood system as the substitution theory says. When Ogawa says that modals could be used in some contexts where the subjunctive could not, he identified three main areas-

³ Described more in chapter 2.3.

Expression of obligation, Apodoses of rejected conditions and requests in dependent clauses. These contexts are highly specific and their details are not relevant for this work. What is, however, is the idea of finding the contexts where the newly emergent language phenomena functionally coincide with some already existing and where they differ. In the practical part, certain instances of *gonna* will be analysed to obtain the same information as Ogawa, i.e. (contextual) similarities between *gonna* and functionally parallel modals but also differences. If the analysis reveals contexts which are unique for *gonna* where other means of expressing modality will rarely appear or not at all, it would support the idea of thinking about the shortened form *gonna* and other similar verbs as a modal subcategory in PDE. If the analysis reveals similar contexts for *gonna* and some other modal expressions, it would be more plausible to call it a variation as Ogawa did with OE lexical verbs used in modal contexts.

2.2.4. Emergent Modals

This chapter will introduce in greater detail the category of verbs that include *gonna* and other formally and functionally similar ones. Krug (2000) elaborated the previous claims that the English modal system is currently being reorganised with his postulation of a new subcategory that he named ‘emergent modals’. His work is based upon the grammaticalization theory and produced synchronic and diachronic analyses of phrases such as *be going to*, *have got to*, *have to*, *want to*, etc. that were often claimed to be changing their categorial status and acquiring some of the features typical of English core modals. Krug proposed a new model of grammatical categorisation in English verbal system that aimed to describe the new category of ‘emergent modals’. His model of categorisation is based on the analogy with the classical Newtonian gravitation model where members of a category exert different degrees influence over each other. The advantage of this model is that it can capture both the ongoing diachronic change and synchronically delimit a newly emerging group of verbs by the fact that it is dynamic and potentially flexible as it allows movement of its items. If Krug came up with a set of defining features, he would inevitably run into troubles. There would be elements that would not fit some of the rules- exceptions, as it usually happens in traditional grammars. Another problem would be that such delimitation would make the new category rigid and stable which is also inaccurate in a natural language. Last disadvantage of such approach would be the lack of explanation why the newly emergent group phonetically erodes towards a shared consonant-vowel-consonant-schwa structure.

‘Emergent modals’ consist of the most prototypical member *be going to*- the ‘gravitation’ centre influencing peripheral ones like *have got to*, *want to*, *have to*, and even more

peripheral ones like *need (to)*, *ought (to)*, *dare (to)*. The degree of centrality is based upon a number of shared features. The features that are the base of the model include phonological form, morphosyntactic properties and discourse frequency of the potential category members.

Following figure 1 from Krug (2000, 239) should help visualise the internal structure of the new paradigm as well as how the gravitation model can be used to visualise the relations within and even outside of the ‘emergent modals’. The relative size of the bubbles is indicative of the verb’s influence over others. The left cluster is the more central members of the category while the peripheral ones stand half-way between the new group and *will*, which also exerts considerable influence over them. The fact that *will* is included stresses the relatedness of future and modal functions.

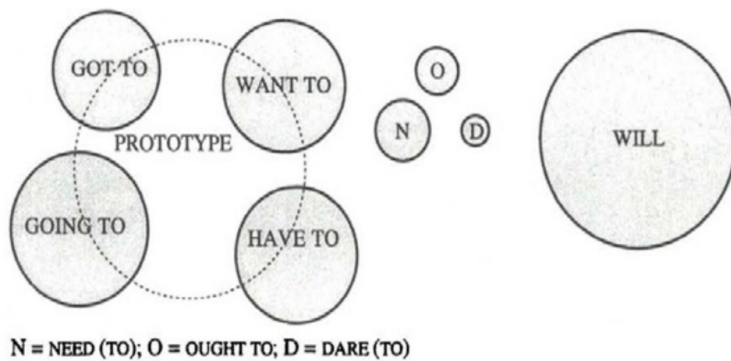


Figure 1 Krug's system of emerging modals (including the central modal will)

The difference between the focus of Krug’s investigation and this work’s focus is twofold. Firstly, Krug was researching a whole new paradigm while this work focuses only on the central *gonna (be going to)*. Secondly, Krug’s work suggests a gradual shift from *be going to* (and the whole paradigm) into *gonna*

with both formal and semantic changes (shortened form + modal semantics), while I suggest a divergence. I want to show, on the example of *gonna*, that it is the shortened form that gathers the modal meanings and that there is a functional divergence between the full form and its shortened counterpart. In other words, Krug proposes the following diachronic change $A \rightarrow B$, while I claim $A \rightarrow B, C$.

2.3. Grammaticalization as Emergent Linguistic Behaviour

Current approaches towards language that support the idea of grammaticalization is a broad usage-based/ emergentist framework represented by the work of linguists such as Bybee, Hopper or Langacker, although the roots of grammaticalization theory are older than these approaches themselves. The general idea of this framework is that language is shaped by the way people use it which makes it a very flexible and amenable. It views language as a dynamic evolving system of human mind that emerges from the cooperation of different cognitive and social processes. This idea is in accord with other often overlapping but still subtly varied

linguistic approaches such as Langacker's Cognitive Grammar, Goldberg's Construction Grammar, or Bernandéz's Morphodynamic/ Synergetic theory.

The varied emergentist approaches form an opposition to Chomsky's Generative Grammar that understands language in a more static and innate way, often stressing its biologically given structure.

The term 'emergent' itself is important. It refers to the fact that language structure emerges through interaction. The term might have been first used in Paul Hopper's article 'Emergent Grammar' (1987), which is one of the first to concisely formulate the emergentist position. It describes grammar as a continual movement towards structure that is never present and only unceasingly coming into being. Hopper in it stresses that grammar must be viewed 'as a real-time, social phenomenon, and therefore [it] is temporal; its structure is always deferred, always in a process but never arriving, and therefore emergent.' (Hopper 1987, 3) Language and its structures are believed to emerge from other cognitive and socio-cultural processes, mingling together and recursively building structures on and from other structures. It is, as he said, a *growing together* of different forms (Hopper 1987, 8). According to Hopper, a combination of cognitive and socio-cultural processes leads to the emergence of a self-organising system, i.e. language. Such is the theoretical background that allows the conception of the modern theory of grammaticalization but some linguists hinted explicitly at the processes leading to the creation of grammar even decades before the 1980's when most of the works described above were published.

The first linguist to use the term grammaticalization was probably Meillet who defined it as "the attribution of a grammatical character to a previously autonomous word" (Meillet 1912, 131, seen in Hopper 1991). There are two problems with such a definition- general one and particular one relating to the context of English shortened modal expressions under present scrutiny. The general one is that it is problematic to establish what is autonomous, meaning lexical, and what is grammatical. The second problem is that Meillet's definition confines grammaticalization to the domain of morphology since it only considers a change in the nature of one word while the English emergent modal expressions start their grammaticalization journey as multi-word phrases. Thanks to empirical research, many of the linguistic categories that Meillet relied on are now shown to be fuzzier and more fluid than was previously thought in the first half of the 20th century. Not only 'lexical' and 'grammatical' categories but also the category 'word' became problematic in the light of new rigorous cross-linguistic data. Eventually, different approaches to grammaticalization were developed that acknowledged or even helped to acknowledge that language categories are not so categorially discreet and stable.

Despite the shift in terminology, today's most general definitions of grammaticalization are not too far away from Meillet's; consider Hopper and Traugott's (2004, 4) definition: "it is a process where lexical items assume properties typical of grammatical words". What is written above implies, that the distinction between lexical and grammatical domains will further be treated as a continuum in accord with authors such as Halliday (1961, 248-9). It means that one word will be understood to be more, or less grammatical than other based on certain features. In the case of expressing modality in English, using an adverb would be less grammatical than using a core modal. Conversely, using the reduced form of one of the emergent modals to express epistemic modality would also be more grammatical, based on the formal properties of the linguistic items even though the meaning stays the same. Pointed brackets indicate which means of expressing modality in the sentences below is considered more grammatical.

Maybe, she has done it. < She *may* have done it.

It *is going to* happen. < It's *gonna* happen.

The suggested lexical-grammatical continuum does not contain evenly distributed set of linguistic items. There are certain areas where linguistic material tends to cluster (Bybee, Hopper 1993). In the context of the evolution of grammar, these clusters represent points on the continuum between which different linguistic items 'jump' during their grammaticalization journey. In the theory of grammaticalization, the continuum with clusters is referred to as a *cline* (e.g. Halliday 1961). What is interesting about clines is the fact that functionally similar linguistic items in different languages develop in similar ways. There are various clustering patterns for different paths of grammaticalization, i.e., clines. These are prototypical and cross-linguistically recurring patterns of language change. Below is the most general and famous grammaticalization cline (Hopper, Traugott 2009, 7):

CONTENT WORD → GRAMMATICAL WORD → CLITIC → INFLECTIONAL AFFIX (→ZERO)⁴

There is an ongoing debate whether language change, as represented by clines, is unidirectional (Traugott 1982), meaning that grammar always begins with a lexical item that is only able to move to the right on the cline (or stay where it is) and gradually acquires grammatical nature which would again either stay as it is or lead to the loss of linguistic material due to phonetic erosion.

⁴ The last bracketed cluster is Givón's addition (Givón 1979, 33) to this cline assuming phonetic erosion that would eventually lead to the disappearance of the linguistic material

2.4. Grammaticalization and Lexicalisation

The change from *be going to* to *gonna* could arguably be included under the domain of lexicalisation rather than grammaticalization. This work favours grammaticalization but it may prove insightful to summarise arguments for lexicalisation and explain why the grammaticalization account seems more convincing to explain the current state of affairs of the ‘emergent modals’. At the beginning of the 1970’s there was a debate over what Pullum (1997) refers to as ‘Teddy facts’. They are sentences that feature certain semantic constrictions on the contracted forms of what Pullum calls ‘therapy words’ - most of them are those that Krug (2000) identified as ‘emergent modals’, although some are missing, e.g. *need*. The question that ‘Teddy facts’ spurred is what are the principles that govern the syntactic distribution of the contracted forms and ultimately what is the paradigmatic relationship between the full forms and the forms that ‘show phonetic amalgamations with infinitival *to*’ to use Pullum’s words (1997, 81). In short it was a similar kind of scrutiny that Krug (2000) tried to perform – to describe the function and behaviour of the ‘Teddy facts’ (‘emergent modals’). However, Pullum’s method and conclusion is notably different as will the end of this chapter show. Below this paragraph is the gradual introduction to ‘Teddy facts’. According to Pullum, to most native speakers of American English 1) has an ambiguous reading between the amicable wish of success and the desire to replace Teddy. The abbreviated form in 2) erases this ambiguity and leaves the latter reading. The unambiguous latter meaning is also seen in 3) and the abbreviated verb form renders this same sentence ungrammatical.

- 1) Teddy is the man I want to succeed.
- 2) Teddy is the man I wanna succeed.
- 3) Teddy is the man I want to succeed Bobby.
- 4) *Teddy is the man I wanna succeed Bobby.

The two following examples by Lakoff (1970) (seen in Pullum 1997, 81) show a similar behaviour as ‘Teddy facts’. Where 5) again shows ambiguity between the statement that there are puzzles I have and will work on and the deontic modality, 6) only has the deontic reading.

- 5) There are some puzzles I have to work on
- 6) There are some puzzles I hafta work on.

Pullum (1997) tried to answer the debate over what guides the syntactic distribution of the shortened verb forms by establishing their relationship to their parental phrases. He

dismisses the lexical stance which claims that the shortened forms such as *hafta* or *wanna* are independent verbs, synchronically unrelated to *have to* and *want to*. He also dismisses the syntactic one pursued by generative grammarians that sought to establish different rules that would replace the full form with the shortened one in specific contexts. Pullum advocated his own stance that proposes to view the abbreviated forms *gonna*, *wanna*, *gotta*, etc. as results of derivational morphology. He proposes to understand *to* as a suffix the same way as *under* is a prefix in *undergo*. What Pullum's assessment of the relationship between the abbreviated forms and their full parental structures does not consider is the whole grammaticalization framework and the paradigmaticity of the 'therapy verbs' ('emergent modals'). He does not mention their shared modal semantics and formal similarities that make them cohesive. Another problematic point is the fact that he does not use empirical data and all assumptions about grammaticality of his sentences are intuition-based.

Despite the mentioned drawbacks, there is one especially relevant insight that the study of therapy word offered. The last two examples by Lakoff present a sign that supports the thesis of this study, i.e. that the shortened forms (and thus *gonna*) tend to express modal meanings. The examples only differ in the full/ abbreviated form and the abbreviated 6) keeps the modal meaning while it discards the other one.

What Pullum's stance lacks may be supplied by some insights brought by Krug (2000), namely the insight about the inner formal and functional convergence of the 'therapy verbs' ('emergent modals'). Formal convergence shows in the reduction of the paternal phrases towards the *cvcə* structure. Grounds for claiming the functional convergence could be based upon the qualitative analysis of the reduced forms, i.e. *gonna* in this work, and the context in which they appear. If it reveals that these forms gathered modal meanings around them, it would contrast them with their source constructions. In other words, the 'emergent modals' (I will use Krug's term consistently from now on), seem to represent a new subgroup of modal expressions whose form is a surface manifestation of 1) their functional divergence from their parent phrases and 2) functional convergence within the new paradigm. As a new group, these verbs, including *gonna*, should not be a priori expected to follow either the syntactic behaviour of their parent phrases or that of the core modals with whom they are often associated.

3. Objectives and Hypothesis

The hypothesis of this work is that *gonna* is gradually functionally diverging from its parent phrase *be going to*. In other words, the hypothesis is that *gonna* is undergoing a process of grammaticalization which means that its meaning is becoming more grammatical and

abstract in nature, more specifically that it acquires modal meanings. This is the reason why it diverges from *be going to*.

This hypothesis is a part of a bigger discussion. Probably the most concise articulation was Krug's dissertation work (Krug 2000) that called for a creation of a new subcategory of modal verbs – 'emergent modals'. Here, the focus lies on *gonna* and my hypothesis is slightly different from Krug's. While he claimed that there is a process of grammaticalization in the domain of English modal verbs leading to the change from the parent phrases of 'emergent modals' like *be going to*, *have got to*, *want to*, etc. to their reduced forms *gonna*, *gotta*, *wanna*, etc. I propose a functional split between the two groups and a retention of both of them, not a gradual morphosis of one into another. The difference between my and Krug's proposition can be schematised as following:

$$A \rightarrow B$$

$$A \rightarrow A, B$$

Krug's is the top schema, this work claims the bottom schema where A is the original parent phrases and B are the emergent modals.

The practical part of this work will produce quantitative and qualitative corpus analyses which are expected to lend the following results: Quantitatively, as a symptom of progressing grammaticalization of *gonna*, it should show a gradual increase of frequency in time. Conversely, the frequency of *be going to* is expected to decrease in the modal contexts where it competes with *gonna*. It is important to look at the relevant contexts since not all are comparable. For example, *be going to* followed by a noun phrase cannot be included in the analysis as I am studying those instances which function as grammatical markers of either future tense or some modal meanings, not instances in which *be going to* is a verb of motion. In these contexts, *be going to* does not functionally compete with *gonna* and hence I expect no related rise of frequency of one item and fall of the other.

If I witness a stagnation of frequency of *gonna*, it would be a strong counter-argument for its grammaticalization. Although a rise of frequency is not a necessary prerequisite for grammaticalization, it strongly correlates with it. It is logical because in the process of grammaticalization, the language item loses its specific meaning which binds it in certain contexts and it broadens its meaning with more general and grammatical meanings which allow it to move to more contexts.

If there is a stagnation or a rise of the frequency of *be going to* in the relevant contexts, there is a possibility that more factors are at play than just the functional competition between *gonna* and *be going to* that leads to their functional divergence. For example, *be going to* may also acquire some meanings that I do not account for in this study. Potentially, it can appear more often in future tense contexts at the expense of *will* which would lead to the rise of its frequency.

The qualitative analysis will be conducted on two samples of sentences with *gonna* that are from two different points of time. This will allow the analysis to capture the diachronic change, if there is any. The analysis will consist of labelling each use of *gonna* as modal, future or other and if modal, it will specify a subtype of modality in the cases that are worth closer attention. This may be because they represent a prototypical use that is better illustrated with an example. It can also be a surprising example. The qualitative analysis will therefore provide some specific use of *gonna* in context. Apart from the closer scrutiny, it will be used to determine the overall ratio between modal, future and other meanings in the use of *gonna*. As there will be two samples from different time periods, the analysis will also provide the expected change of this ratio in time. I expect to find the ratio growing in favour of modal meanings. This is also predicted by the grammaticalization theory since the direction of change in meaning during this process goes from a less grammatical to a more grammatical one, i.e. from future tense to modal meanings.

If I find the ratio stagnant or even increasing in favour of future tense or other meanings, it can have two alternative interpretations based on how the frequency of *gonna* will behave.

If the frequency is rising steadily but the relative number of modal meanings does not rise, it would be reasonable to think that the process of grammaticalization is happening but other meanings that are not considered in this work are being acquired by *gonna*. It can also be that the rise of frequency is a random fluctuation or that *gonna* is in fact not diverging functionally from *be going to* and it is *gonna* which is acquiring future tense meanings of *will*. The whole hypothesis about the grammaticalization of *gonna* should not be abandoned while its frequency is rising steadily.

If the frequency of *gonna* is not rising and the qualitative analysis does not find the ratio swinging towards modal meanings or even slipping from them, there would be a serious argument to abandon the whole hypothesis.

4. Quantitative Material and Methodology

The study will use data from The Movie Corpus and The TV Corpus searched through a corpus manager accessible at www.english-corpora.org. The reason for using these corpora is the highly informal nature of language that they contain which is due to the fact that films and TV series seek to imitate the casual spoken language. This makes it a suitable place to study current trends and language change, which usually starts as an informal language variation. These corpora also allow a diachronic perspective on the functional divergence between *be going to* and *gonna* since their texts are divided into decades, beginning with the 1950's and ending in 2010's. However, this study will only consider the last three decades, i.e. 1990's, 2000's and 2010's as they comprise around 90% of all the texts in each corpus.

The general methodology for quantitative data was sketched in chapter three. The study will look at the frequencies of *be going to* and *gonna* in both corpora for each of the three decades. This means that there are three variables- corpus (The TV Corpus, The Movies Corpus), time (90's, 00's, 10's) and word (*gonna*, *going*). Before I proceed to further describe the statistics, I need to elaborate on the corpus search methodology concerning the variable word.

The corpora search for *gonna* was straight forward- since the spoken language allows the omission of the verb *be* in front of it, I did not need to specify it in the search. Also, I did not need to specify that it cannot be followed by a noun phrase since *gonna* + noun phrase (e.g. *I'm gonna school**) is ungrammatical and therefore should not occur in the corpora. The possibility that *gonna* stands at the end of a sentence (e.g. *Are you gonna do it? Yeah I'm gonna.*) is included in the search. The search for *be going to* was more complicated for the following reasons. Firstly, I needed to include all the forms of the verb *to be* (e.g. *am*, *is*, *'s*, *was*, *been*, etc.). I also needed to specify that the whole phrase cannot be followed by a noun phrase to exclude sentences like *He was going to church* as the phrase here does not function as a marker of future tense but rather as a motion verb, which is out of my study's scope, and include elliptical sentences like *I was going to*.

Lastly, there was one more complication that influenced my methodology. When listing the frequencies for *be going to*, there was no way to obtain one list for all the right contexts. Because of the nature of the corpora manager I was working with, all the different forms (and their spoken language transcriptions) of the verb *be* that precedes *going* were written out in separate lists. This was the same for the condition that *going* must be followed by a verb- the nature of the corpus manager could not produce a list of *going* + verb but it would display

separate frequencies for instances of *going* + the particular verb (e.g. *going to do*, *going to see*, etc.). For this reason, I needed to add up all the lists manually. In order to be able to do this, I needed to restrict the number of these lists by setting the lowest frequency threshold for such *going* + verb combination to at least 10 occurrences. In order for my data to be comparable, I set the same frequency threshold at 10 occurrences for *gonna*, although I did not face the same corpus manager problem with it since I did not have to set the condition that it has to be followed by a verb and preceded by *to be*.

Even though the frequency threshold did not alter the total number of occurrences very much, it is useful to point out that because of it, the strength of my analysis lies primarily in the relative comparison between the frequencies of *gonna* and *be going to*, which is as precise as possible, and that the absolute frequency has a slight distortion caused by the application of a minimal frequency threshold of 10 occurrences for each *gonna* and *be going to*.

Above I explained how I gathered the quantitative data from the corpora. The statistics that I used on them and its interpretation is described in chapter 6.1.

5. Qualitative Material and Methodology

Anna Papafragou (2000, 1-3) stresses the importance of context in the interpretation of English modals which alludes to the broader question of what meanings should we assign to the word and which to the context. Papafragou contrasts two approaches in the analysis of polysemous linguistic material which are semantic underdetermination and semantic overdetermination. She claims that overdetermination of linguistic material, i.e. the inclusion of all the contextually possible meanings, makes it difficult to predict regularly the interpretation (ibid, 10-16). It would only enable the researcher to make descriptive statements about the distribution of meanings in different contexts that the scrutinized items convey but it would lack the explanation of the processes that govern the distribution in language. It would only lead to the production of dictionary-like lists of meanings. This is why Papafragou elaborates her semantic-pragmatic analysis of English modality with the preference for semantic underdetermination of linguistic items. Such analysis works with the basic general meanings that are to be found for the majority of the contexts and then focuses on how to explain less common meanings of words or the change of meaning. It involves the consideration of different pragmatic inferences that speakers make during the actual discourse, which are assumed to be one of the main factors that govern the distribution.

Therefore, it is vital to pay heed to the context in which the shortened form *gonna* is situated to determine the percentage of modal, future, and perhaps other meanings expressed.

This stance has two presuppositions that I adopt from Tom Werner (2006) who focused an article on the analysing of the future interpretations of core English modals. He observed that in certain sentences, modals like *may*, *might*, or *will* have ambiguous modal readings and that some of these are also future readings. He claimed that the temporal readings are associated with specific modal readings (deontic, epistemic, etc.) and that, in turn, those modal readings are activated in context. Therefore, the first presupposition is that the modal readings and future modal reading of *gonna* arise from the interaction with context and its lexical entry at best only includes more general modal meanings. The stance towards disambiguating polysemous expressions such as *gonna* assuming its semantic underspecification seems to be in accord with the previously mentioned grammaticalization clines that also display only the general array of meanings. At least the processes that govern the synchronic distribution of meanings across contexts and the diachronic evolution of meanings in clines appear to be the same ones which would in turn make polysemy the prerequisite for grammaticalization. In this sense I dare paraphrase Givón's famous quote "today's syntax is tomorrow's morphology" (Givón 1971, 413) as "today's polysemy can be tomorrow's grammaticalization cline." The know-how that this brings into the qualitative analysis of *gonna* is that the modal meanings that I may find will be listed only in their general typological sense. The categories are based on Palmer (2001) and were described in greater detail in chapter 2.2.1.. A more precise specification will be provided only for a selected sample of *gonna* that will be provided together with the context. This assumes the general potential of meanings that *gonna* can have as an abstract lexeme and the specific meanings that *gonna* produce in the interaction with context as a concrete token.

The qualitative analysis of modal and future meanings will consider only *gonna*. The reason for this is twofold. Firstly, to keep the size of this study from expanding too much and secondly, as I explained in chapter 4, the possibilities of the corpora manager did not allow to reliably list the right contexts for all the forms of *be going to* from which I would be able to make a random sample for the analysis. It was possible for *gonna* because there are less context restrictions.

Because this work is not interested in the difference between The Movie Corpus and The TV Corpus, a mixed random sample that would represent both of them was needed. I made four random samples each of 100 concordance lines. Two from the 1990's where one was from The TV Corpus and one was from The Movie Corpus – I put both sample lines together and produced another random sample of 100 concordance lines from the two previous samples which thus represents a sample from both corpora. I repeated analogous steps for the 2010's 100 concordance line sample representing both corpora. Having one sample from the 1990's

and the other from the 2010's allowed the analysis to compare the diachronic distribution of modal and future meanings.

The results will lend two outcomes. The first is the distribution of modal and future functions of *gonna* and their change. The second is the presentation of concrete sentences with *gonna* and commentary on specific uses of *gonna* in context. The presented examples will be chosen because they represent some recurrent prototypical use or conversely because they are rare, surprising and thus interesting. The commentary should always provide some insight in each context. The size of both samples in the qualitative part of my study amounts to 200 concordance lines. The insight that they bring and the reason why they are included in this study nevertheless is the following- they sketch the general distribution of modal meanings and future functions of *gonna* which has not, as far as I know, been done before so it may serve as a basis for further study of *gonna*. The second benefit of including the qualitative analysis is that it shows the specific uses of *gonna* in context which allows better understanding of what precisely is hidden under the term 'grammaticalization of *gonna*' than just a mere statistical number-crunching of frequencies.

Lastly, I need to clarify the methodology of choosing modal and future labels for the individual uses of *gonna*. It is not always possible to unanimously select one modal meaning. Either the context would have to be broader or even with a broader context, it still would not be possible to decide definitively on one interpretation. Taking the example of *epistemic speculative* and *epistemic deductive* modality used, for example, for predictions. Even with a broader context I may not know whether the prediction is only a speculation based on speaker's opinion (hence *epistemic speculative*) or if some deduction based on known facts is happening (hence *epistemic deductive*), e.g. *She's gonna be fine in like an hour*. Does the speaker only hope she will be fine? Is it a guess? Does he have more information about her? Is he a doctor? Is she tired or seriously injured? The context does not provide enough information and thus in my analysis I count examples as such both as *epistemic speculative* and *epistemic deductive*. For this reason, it is not possible to add up the modal subtypes (i.e. *speculative* and *deductive*) to get the total number modal functions (i.e. *epistemic* in this case) as this sentence counts as two modal subtypes but as one modal function. Other sentences may have both the *epistemic* and *deontic* modal function interpretations so the sum of all modal and future functions can be higher than the number of sentences. This allows me to compare the distribution of modal and future meanings and avoid making decisions on modal function without enough evidence.

6. Results and interpretation

6.1. Quantitative Results

I used the corpus calculator at <https://korpus.cz/calc/> to obtain the confidence intervals for all the frequencies of *gonna* and *going* in each decade and in both corpora. The confidence intervals are very small which is caused by the size of each decade's subcorpus which counts tens of millions of words. Therefore, all the differences presented below are statistically significant. All the figures and the charts are made in Microsoft Excel.

The TV Corpus			
1990's	Absolute freq.	i.p.m.	Words in cor.
gonna	53377	1694,1 (± 14.3179)	31 506 980
going	12058	382,71 (± 6.7983)	31 506 980
The Movie Corpus			
1990's	Absolute freq.	i.p.m.	Words in cor.
gonna	47190	1917,2 (± 17.2269)	24 613 584
going	7082	287,73 (± 6.6608)	24 613 584
The TV Corpus + The Movie Corpus			
1990's	Absolute freq.	i.p.m.	Words in cor.
gonna	100567	1791,98 (± 11.0387)	56 120 564
going	19140	341,05 (± 4.8132)	56 120 564

Table 4 All corpora in the 1990's

The TV Corpus			
2000's	Absolute freq.	i.p.m.	Words in cor.
gonna	185469	2118,6 (± 9.6107)	87 543 909
going	41510	474,16 (± 4.5484)	87 543 909
The Movie Corpus			
2000's	Absolute freq.	i.p.m.	Words in cor.
gonna	110180	2150,7 (± 12.6535)	51 230 435
going	15815	308,7 (± 4.7912)	51 230 435
The TV Corpus + The Movie Corpus			
2000's	Absolute freq.	i.p.m.	Words in cor.
gonna	295649	2130,43 (± 7.6563)	138 774 344
going	57325	413,08 (± 3.3733)	138 774 344

Table 5 All corpora in the 2000's

Table 1 show all three corpora that are used, i.e. The TV Corpus on top, The Movie Corpus in the middle and the sum of both corpora at the bottom. It displays the absolute frequencies, relative frequencies (items per million) and the total number of words in a corpus for *gonna* and *going* in each corpus. The relative frequency is accompanied by a confidence interval in the brackets. The following tables 2

The TV Corpus			
2010's	Absolute freq.	i.p.m.	Words in cor.
gonna	420537	2439 (\pm 7.3482)	172 421 491
going	64612	374,73 (\pm 2.8829)	172 421 491
The Movie Corpus			
2010's	Absolute freq.	i.p.m.	Words in cor.
gonna	152351	2406,1 (\pm 12.0382)	63 318 765
going	24055	379,9 (\pm 4.7841)	63 318 765
The TV Corpus + The Movie Corpus			
2010's	Absolute freq.	i.p.m.	Words in cor.
gonna	572888	1430,17 (\pm 6.2736)	235 740 256
going	88667	376,12 (\pm 2.4707)	235 740 256

Table 6 All corpora in the 2010's

and 3 show analogous data for the 2000's and 2010's.

Figure 3 shows the frequency per million in The Movie Corpus. The trend for both *gonna* and *going* is a statistically significant rise of frequency in time. *Gonna* has considerably higher frequency which can be explained by the very informal

nature of the corpus (see its description at <https://www.english-corpora.org>). Moreover, the rise in time is steeper for *gonna* than for *going*, which is expected and supports the hypothesis that *gonna* is undergoing a process of grammaticalization that should be accompanied by a rise in frequency.

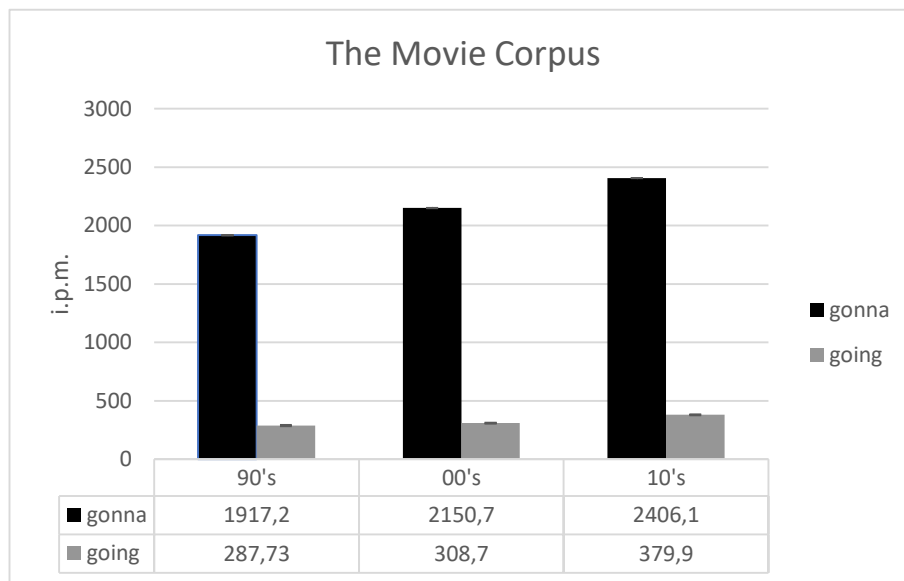


Figure 2 Frequency of *gonna* and *going* in time in The Movie Corpus

The trend for *gonna* is similar, yet the rise is even steeper, in The TV Corpus shown in figure 3. *Going* has a different trend because, unlike in the 2010's in The Movie Corpus, its frequency per million decreases in the 2010's. The reason behind the difference in the frequency trend of *going* is not clear. However, the thesis of this work assumed that its frequency should decline as only the contexts in which it competes in future and modal uses with *gonna* were selected in the search. Nevertheless, the most crucial fact is that the frequency of *gonna* rises steadily which supports the grammaticalization claim.

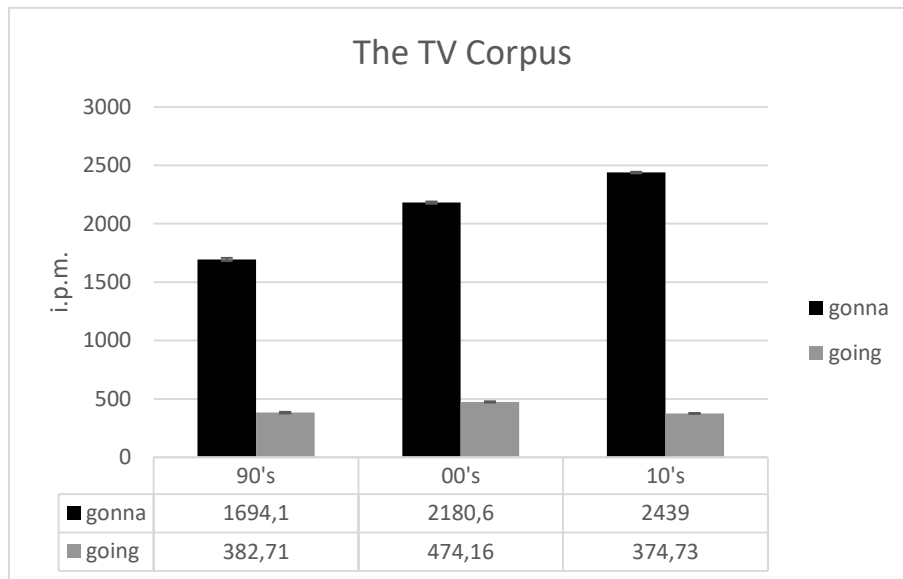


Figure 3 Frequency of *gonna* and *going* in time in *The TV corpus*

From a theoretical perspective, this work is not interested in the difference between the two corpora so figure 4 presents the frequencies per million of *gonna* and *going* when both corpora are added up. It shows that the trend of a steep rise in the frequency of *gonna* is preserved.

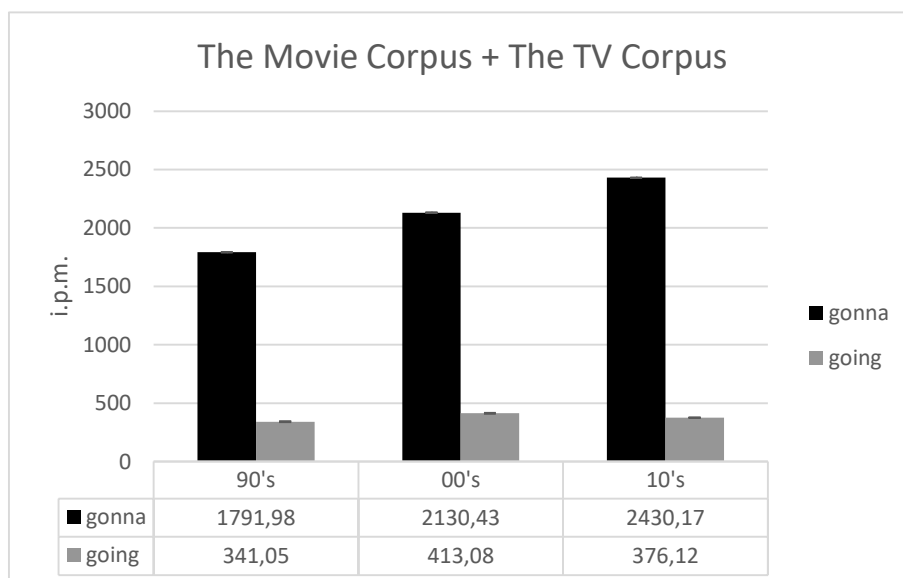


Figure 4 Frequency of *gonna* and *going* in time in the sum of both corpora

The rising frequency of *gonna* supports the claim that it is undergoing a process of grammaticalization. On the other hand, the presupposition that *be going to* would decrease in frequency as a result of a functional competition with *gonna* is not supported by the quantitative analysis. The logic behind this presupposition was that some of the variation of future-modal meanings will transfer to *gonna*, hence *be going to* should appear in less contexts, and conversely, *gonna* would appear in more of them. This suggest that the functional divergence

may not be the main factor in predicting and explaining the frequencies of the two items. The following qualitative results in chapter 6.2 will bring results that will suggest whether or not the functional divergence is happening at all.

6.2. Qualitative Results

6.2.1. Distribution of modal and future functions

This chapter contains the qualitative analysis of concordance lines with *gonna* where each use was assigned either a modal or future function label. Chart 4 displays the overall distribution of modal and future functions of *gonna*, as well as the particular modal subtype functions, in 100 concordance line sample from the 1990's and one from 2010's. Modal subtypes are always presented next to their respective modal types they belong to, e.g. speculative, deductive and assumptive are subtypes of epistemic modality. The overall modal function is calculated as a sum of all the modality types (epistemic, deontic, dynamic) and mood types (optative, conditional). The colour of each category in chart 4 indicates its status- light grey is kind of modality, dark grey for overall sum and white is for mood. For the sake of clarity, the results of table 7 will be presented and compared in a series of figures that follow.

1990's - 100 concordance lines								
Epistemic	38	Speculative	23	Deontic	7	Permissive	0	Conditional 8
		Deductive	22			Obligative	1	
		Assumptive	8			Commissive	7	
Dynamic	3	Abilitive	3	Overall Future	51	Overall Modal	56	
		Volitive	0					

2010's - 100 concordance lines								
Epistemic	49	Speculative	28	Deontic	6	Permissive	0	Conditional 4
		Deductive	19			Obligative	3	
		Assumptive	6			Commissive	1	
Dynamic	3	Abilitive	2	Overall Future	47	Overall Modal	63	
		Volitive	1					
Optative 1								

Table 7 The distribution of modal and future functions of *gonna* in the 1990's and 2010's

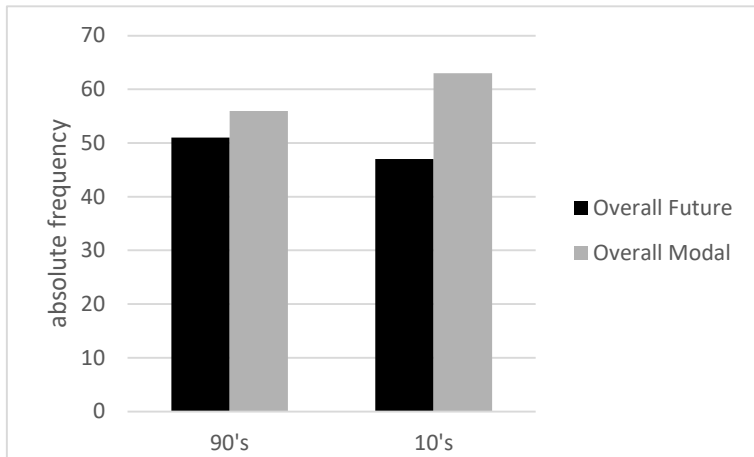


Figure 5 Distribution of modal and future functions of *gonna* in time

Figure 5 shows the distribution of modal and future functions of *gonna* in the 1990's and 2010's. It shows a slight decrease of future function, which is not statistically significant ($\chi^2 = 0,3201$, $p = 0,5715$) and a more pronounced increase of modal functions which is the expected change in time but it also did not prove significant ($\chi^2 = 2,4319$, $p = 0,1189$).

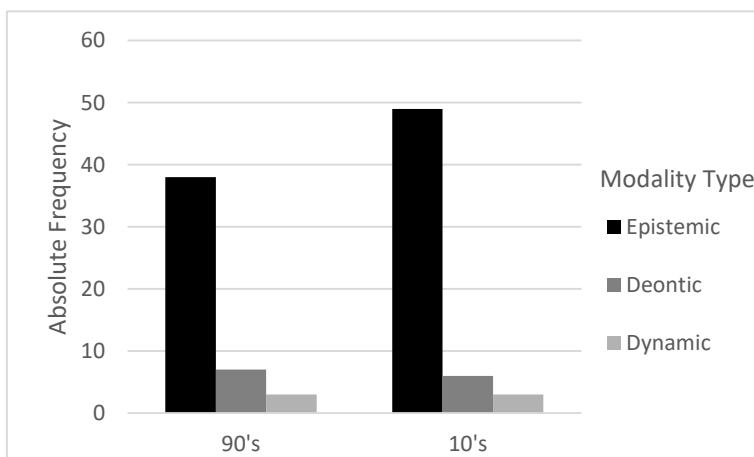


Figure 6 Distribution of modality type of *gonna* in time

Going over to modality, figure 6 shows the distribution of different types of modality indentified for *gonna* in each decade. The overall order of modality types stays the same in both decades. Epistemic modality is, by far, the most common one and although it seems to increase its lead in the 2010's, this increase is not statistically significant ($\chi^2 = 2.4616$, $p = 0,1167$). It is followed by deontic and dynamic modality respectively. Lastly, in the 100 sample for 2010's the study identified a singular example of optative modality, namely an example of a sentence expressing wish. It will be shown in chapter 6.2.3. A bigger sample would be required to find out whether it is a systematic trend, i.e. broadening of the modal repertoire that *gonna* is able to express, but if it was so, it would be in accord with this work's thesis about the grammaticalization of modal uses of *gonna*.

I will present the data from the most surface modal-future distribution to deeper modal-internal distribution of modal subtypes. All the chi-2 tests mentioned were conducted by using the corpus calculator at <https://korpus.cz/calc/> on the confidence level $\alpha = 0,05$. The y-axis always signals the number of functions found for a category signaled on x-axis.

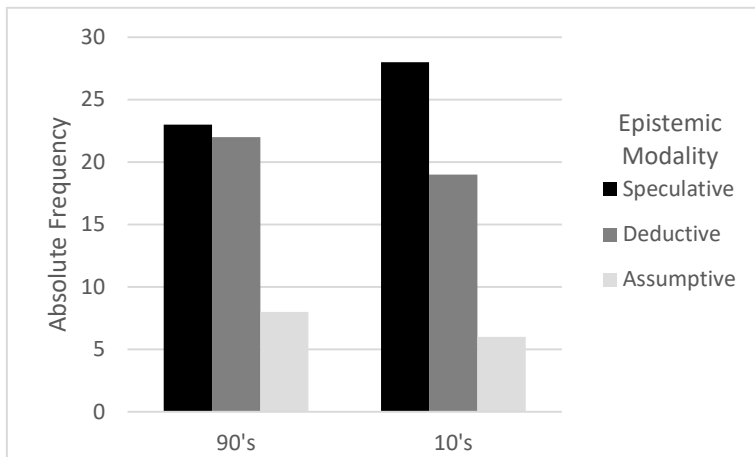


Figure 7 Distribution of epistemic modality subtypes of gonna in time

Looking closely at epistemic modality and its subtypes in figure 7, it seems that the overall increase of frequency of the epistemic modality in the 2010's sample was driven by the increase of epistemic speculative modality but this increase is not statistically significant either ($\chi^2 = 0,658$, $p = 0,4173$). The question

whether the epistemic speculative modality is systematically becoming prominent function of gonna or whether it shows in the present data as a consequence of insufficient sample size is a matter for further research.

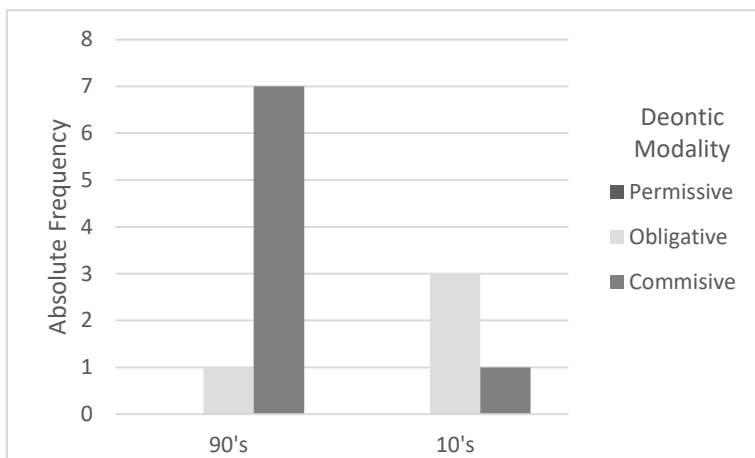


Figure 8 Distribution of deontic modality subtypes of gonna in time

Figure 8 shows the deontic modality subtypes of gonna in the two decades. The frequency of deontic modality is unfortunately too low to make any judgements about the order of modality subtypes. Although, what is suspicious is the zero occurrence of deontic permissive modality in both samples, that might stem

from a semantic constraint on the part of gonna. It may be that it is semantically impossible to allow someone something with the use of a verb whose semantics used to express motion rather than ability.

Dynamic and optative modalities will not be shown in the figures as their frequencies are too low to reveal anything meaningful. What we can say about them is that compared to deontic and especially epistemic modality, they are minor functions of *gonna*, as can be seen in figure 6.

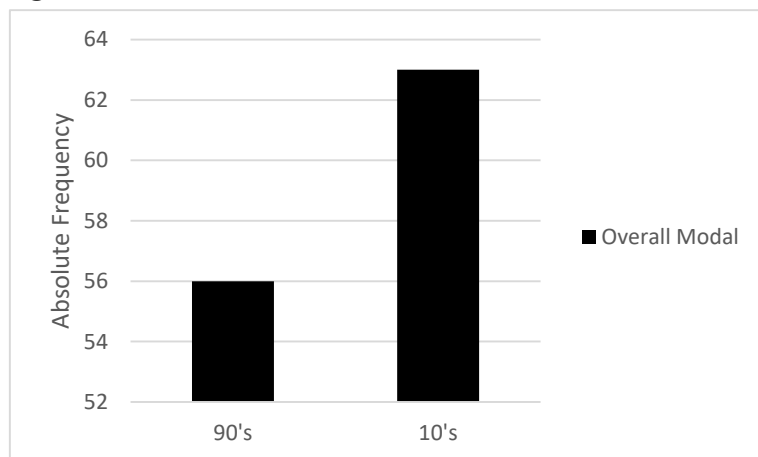


Figure 9 Frequency of future function of *gonna* in time

Lastly, Figure 9 displays the frequency of overall modal functions of *gonna* in time and show an increase in the 2010's, which is expected by this work's thesis. However, this increase is not statistically significant either ($\chi^2 = 0,3133$, $p = 1.0167$). A bigger sample may bring significant conclusions. Chapters

6.2.2 and 6.2.3 provide the close reading of concordance lines with *gonna* that supplied the frequencies presented in this chapter.

The failure to show a significant increase in modal functions over future functions in *gonna* is the reason why the hypothesis of functional competition and split between *be going to* and *gonna* has to be rejected. The rise in i.p.m. frequency shown in chapter 6.1 together with the fact that *gonna* fonetically converges with other members of the 'emergent modals' to *cvca* structure is reasonable evidence to maintain the claim that it is undergoing the process of grammaticalization but the qualitative analysis presents no evidence for the functional split.

6.2.2. Close-reading of *gonna* in 1990's

Following is the close-reading of ten concordance lines with *gonna* from the 1990's sample chosen by the criteria described in chapter 5.. The purpose is to show a specimen of future and modal contexts. The number of each category is not representative of its distribution as there is, for example, only one specimen of future function as this work focuses on modal function. In fact, future functions equal approximately the modal functions as was shown in chapter 6.2.1. The lines are presented almost as they were obtained from the corpus manager. There are only two differences. First is that the corpus parsed *gonna* as two words and thus returned it as "gon na" so in this work's examples it was put back together. The second difference is that the particular *gonna* that the text below each concordance line comments on

is written in bold as sometimes there are more of them on one line. Each comment starts with the name of the modal or future function that was chosen for the specific use of *gonna*.

- 1) [...] you care. No. I'm saying buy genuine Q-Tips. If I'm **gonna** put a stick in my ear, I'd like a little cotton at [...]

CONDITIONAL: This conditional sentence could be interpreted as both the first and second conditional. To interpret it as a first conditional, the phrase *I'd like* would have to be treated as a lexical unit where the conditional *would* is lexicalised and the phrase as a whole signals polite request. In this case *gonna* in the first clause of the first conditional sentence stands in place of present tense. If we interpret *I'd like* as a full-fledged conditional mood, the interpretation of the whole sentence would have to be second conditional. In this interpretation, *gonna* in the first clause would stand in place of irrealis use of past simple. Both readings of the whole sentence as either one modal type represent a modal context with *gonna*.

- 2) [...] liquidate them. A loan is always a possibility. Trust me. You're **gonna** be a very rich woman. Eventually. I'm sorry. I'm [...]

EPISTEMIC SPECULATIVE / DEDUCTIVE: This use of *gonna* can be described as modal epistemic prediction. It is on the edge of speculative and deductive modality because there is not enough evidence whether the speaker's prediction that the addressee is going to be rich is based on facts or speculation. If it is based on facts, it may function as an encouragement and to express hope. If it is based on speculation, it may function as a persuasive bidding that is supposed to convince the addressee. We can see this by the suggestion of a loan and the persuasive *trust me*.

- 3) [...] . So-So you mean whatever my decision is, that's the thing that's **gonna** kill him? It could be. I mean, we're assuming that [...]

EPISTEMIC ASSUMPTIVE: This sentence is a conditional-concessional sentence according to Dušková (2012, 644). The second part of this type of sentence often contains modal verb as is suggested by some examples of this type of sentence by Dušková (2012). *It's my duty, however unpleasant I may find it. The captain of the ship is responsible, whoever the real culprit may be.* This use of *gonna* is labelled as epistemic assumptive because it expresses a question over a future that generally happens under some conditions, i.e. the assumption is that no matter what the speaker does, it would generally lead to death.

- 4) [...] much, but it will after we fix it up. We? We're gonna buy this place. We're **gonna** what? We're gon na [...]

FUTURE: This is an example of *gonna*'s syntactic independence. The reanalysis of the former preposition *to* has gone so far that a real infinitive is not required to follow. A question for further research may be how often is it possible for *gonna* not to be followed by an infinitive as in this case and whether this differs from the original *be going to*. My intuition favours either the full form with infinitive *We are going to do what?* Or the shortened form without an infinitive *We gonna do what?* Over the full form without infinitive *We are going to what?*

- 5) [...] that happy. - - I'm happy. I thought maybe you were **gonna** say I shouldn't go, 'cause I'm not really in [...]

EPISTEMIC SPECULATIVE: In this case *gonna* expresses epistemic modality, more precisely an unactualised prediction in the past. It is replaceable with *would* without a change of meaning, i.e. [...] *I thought maybe you would say [...]*, meaning that *were gonna* in this case equals *would*. This use is labelled as speculative because it expresses an unactualised action and because its factuality is weakened by *maybe*.

- 6) [...] ? Noon. But you don't have to. Nat, what am I **gonna** do, abandon you on Christmas? - I'll be here, all [...]

EPISTEMIC SPECULATIVE: There is a rhetorical question with *gonna*. It could be labelled as irrealis because its suggested proposition was not to be thought of as realistic but a speculation, i.e. abandoning the addressee on Christmas is a mere speculation. What is also interesting is that it is contrasted with *will* in the following sentence that is supposed to bear a more realistic tone than the previous one, i.e. in reality, the speaker will be with the addressee on Christmas. The sentences together label the proposition of abandonment on Christmas as unrealistic by the use of *gonna* and the staying together as realistic by the use of *will*. Although the semantic development of *will* is out of scope of my work, the idea of it becoming a complementary to *gonna* as modally more unmarked item is interesting and worth further research.

- 7) [...] to do it. - Okay, Harry. Bingo. If this mountain's **gonna** rock and roll, we're **gonna** know about it. So how [...]

CONDITIONAL: This sentence is a first conditional where *gonna* occupies both clauses. It expresses some general truth. If a person of a bigger stature starts dancing, it will probably be loud and the speaker is going to notice.

- 8) [...] gon na be good. Look at him. - Uh-huh. You're not **gonna** do anything anymore. - Here, it's yours. It's yours [...]

DEONTIC OBLIGATIVE: This use was marked as deontic obligative as the proposition functions either as a threat or a prohibition. In either case the speaker is an external authority exercising influence on the addressee, hence deontic obligative.

- 9) [...] , Henry, please. Don't be so sensitive. Of course I'm **gonna** think about the children at a time like this. They're my kids [...]

DEONTIC COMMISIVE: Here *gonna* functions similarly to *will* in example 6, i.e. as a promise. The speaker is the authority exercising an obligation on him/herself, hence deontic commissive.

- 10) [...] been hangin' in the wrong' hood. Girl, you ain't never **gonna** mean shit to them. - Just a dash of color. – No [...]

DYNAMIC ABILITIVE: This use can be reworded as *you will never be able to mean anything to them*, which expresses that the speaker is unable, hence dynamic abilitive.

6.2.3. Close-reading of *gonna* in 2010's

This chapter presents the close-reading of ten concordance lines from the 2010's random sample with *gonna* from the mix of both corpora.

- 11) [...] re lucky, Ken. There's one left. - If there's only **gonna** be one, that's a good one. I got that for Karen [...]

OPTATIVE: This is a unique use I did not find in the 1990's sample and there is no other like this one in the 2010's sample- *gonna* in an optative sentence, replaceable with past simple, i.e. *If there only was one, that's a good one*. It may be that the use of past simple in the optative sentence would sound too archaic and the only suitable item in PDE that expresses hope for the future and some kind of epistemic uncertainty is *gonna*. It is hard to generalise from a singular example; however, it is still an interesting example supporting the thesis that *gonna* is acquiring modal meanings since optative mood is a modal context.

- 12) [...] forward to Noni's performance tonight. Oh, yeah, I think it's **gonna** be amazing. Yeah, great. Hi, Officer Hero. Officer Hero [...]

EPISTEMIC SPECULATIVE: The sentence begins with *I think* that places its factivity in the realm of subjective thought. No other evidence from which the speaker could derive his/her prediction, hence epistemic speculative.

- 13) [...] I'm the one whose entire inventory is off-limits. I warned you what was **gonna** happen if you pulled out of the deal. Oh, you don't [...]

CONDITIONAL: This is a second conditional sentence where *gonna* stands in place of past simple. It could be reworded as [...] *what would happen if you pulled out* [...] where *would* stands in the place of *was gonna*. A similar replacement is possible in example 5.

14) [...] says I'll be very ugly before I die. Ava, you're not **gonna** die. You're coming with me. It's hopeless. He lets [...]

EPISTEMIC DEDUCTIVE: Talking about death in this context is metaphorical. If Ava is in a state where she can follow the speaker somewhere, her talking about dying is probably meant as an expression of emotional distress rather than a health problem. This is obvious to the speaker who, from this, deduces that Ava is not going to die, hence epistemic deductive.

15) [...], 007? No, but you should go through the city. 66 is **gonna** be miserable right now. We'll get there. Oh, before Doyle [...]

EPISTEMIC ASSUMPTIVE: The assumption is likely to be that at certain hours route 66 will be full with traffic. A prediction based on a general or repeating fact labels this use of *gonna* as epistemic assumptive.

16) [...] re a therapist. I can say that kind of shit and you're not **gonna** go to the police, right? I mean, you know what I [...]

DEONTIC OBLIGATIVE: This use of *gonna* functions as a threat and prohibition, similarly to example 8, hence deontic obligative.

17) [...] I promise. - I love you. - I love you. JONATHAN: **Gonna** make you proud, Dad, I swear. You watch over me, [...]

DEONTIC COMMISIVE: Analogue to example 9, *gonna* is used in a sentence that expresses promise, hence deontic commisive.

18) [...] n't distracted. And I think that, if there's any chance I'm **gonna** walk again, it's because Dr. House is a genius. How [...]

DYNAMIC ABILITIVE: This sentence can be reworded as [...] *if there's any chance I will be able to walk again* [...], which expresses speaker's ability, similar to example 10, hence dynamic abilitive.

19) [...] ! - I had that. - Oh, did you? Or were you **gonna** let it fall to the ground again? What is your problem with me [...]

DYNAMIC VOLITIVE: This use is also very specific and found only once in the whole set. It expresses a volition to let something fall. Also, as in the example 5, there is a similar

combination of past simple and *gonna*. Here, it does not express an unactualised future in the past, but rather volition, hence dynamic volitive.

20) [...] he wouldn't have to listen to that. Hey, Mac, I'm **gonna** give it a rest for a second, all right? I'm looking [...]

FUTURE: This is an example of a sentence labelled as pure future. It is a statement of fact, namely of that what the speaker will do. There is no indication of prediction or any other modal function.

7. Conclusion

The focus of this work was to describe the change in the English modal system on the specific example of *be going to* and *gonna*. The theoretical part presented different concepts that are needed to talk about this change. At the beginning of it, there was an introduction to modality in general, including a distribution of its subtypes, then an introduction to English modal system from both synchronic and diachronic perspective. Following was Manfred Krug's category of 'emergent modals' (see chapter 2.2.4.) which led to the introduction of the grammaticalization theory (see chapter 2.3.), which was the main theoretical backbone of this work. 'Emergent modals' is a newly arising group of modal expressions that are the result of a process of grammaticalization of various expressions like *be going to*, *want to*, *have got to*, etc. During the process of grammaticalization, these phrases lose their lexical meaning and acquire more grammaticalized modal meaning according to Krug (2000). One of the reasons why consider these expressions as forming a group is their shared modal semantics and their fonetic reductions in informal language that converges them into a *cvcə*. After the theoretical framework for explaining and describing the change from *be going to* to *gonna* was set, a thesis of this work was formulated – the process of grammaticalization of *be going to* that leads to the creation of *gonna* does not lead to the abandonment of *be going to* but rather to a functional divergence where the modal functions flock to *gonna* and future functions to *be going to*. Such thesis produces presuppositions that were tested in the practical part. The grammaticalization of *gonna* presupposes that its frequency rises in time because as it loses its specific lexical functions and acquires broader grammatical ones, the context in which it can occur broadens too. Conversely, as a result of a competition with *gonna*, the frequency of *be going to* was expected to drop. These presuppositions were tested in the quantitative part of the study. The functional divergence between the two items was tested in the qualitative part of this study.

The practical part used two robust corpora of informal English – The TV Corpus and The Movie Corpus and restricted the search to the three last decades (1990's, 2000's and 2010's) as they composed around 90% of each corpus. The search *be going to* was selected so as to include only the contexts where it was functional competing for the future and modal functions with *gonna*, i.e. where it was followed by a verb phrase or a punctuation rather than a noun phrase or anything else. The search for *gonna* was not restricted in this sense as it does not allow to be followed by a noun phrase.

The quantitative analysis shows a steady and statistically significant increase in frequency of *gonna* in both corpora and no clear trend for *be going to* (see chapter 6.1.). While the rising frequency of *gonna* supports the hypothesis that it is undergoing a process of grammaticalization, the unclear trend for *be going to* is against the original expectations. The functional competition with *gonna* is therefore not the major factor that could explain its frequency. This interpretation of the finding from the quantitative analysis is also supported by the qualitative analysis in the practical part that showed no statistically significant change in the distribution of future and modal functions between the 1990's and 2010's samples of 100 concordance lines for each decade, which suggests that the functional divergence does not take place between *be going to* and *gonna*. The two analyses together propose the following interpretation in regard to the thesis of this work – the grammaticalization of *gonna* is supported by its rising frequency in time and there is a reasonable theoretical and empirical evidence for its participation in the newly rising paradigm of 'emergent modals'. This work however produced no evidence for the functional split between *be going to* and *gonna* – the qualitative analysis shows that both items appear in approximately equal numbers of future and modal contexts, therefore the modal function of *be going to* and *gonna* seems only as a possible variation.

The results of this study of *be going to* and *gonna* can be used as evidence against a too hasty codification and acceptance of the 'emergent modals' category within the English modal system. The word 'emerging' thus proves apt as the modal basis of the proposed paradigm seems so far to be a stable variation. The i.p.m. frequency of *gonna* rises significantly which makes it an item worth attention but further study of it and of other members of the 'emergent modals' is required to establish their position in English modality. Another related topic is English future tense markers – this study brought a closer look on *be going to* while leaving out *will* that may likely prove to be interacting in some ways with *be going to*, *gonna* and potentially other 'emergent modals'.

8. Resources

- Bybee, Joan L. (1995). 'The Semantic Development of Past Tense Modals in English'. In *Benjamins*. (Typological Studies in Language 32). pp. 503-519
- Brinton, Laurel J. and Traugott, Elizabeth Closs. *Lexicalisation and Language Change*. Cambridge University Press, Cambridge 2005.
- Dasher, Richard B. and Traugott, Elizabeth Closs. 2005. *Regularity in Semantic Change*. Cambridge University Press.
- Dušková, Libuše, et. al. (2012). *Mluvnice současné angličtiny na pozadí češtiny*. Academia: Prague
- Givón, T. (1971). 'Historical syntax and synchronic morphology: An archaeologist's field trip'. *Chicago Linguistic Society*, 7, 394-415
- Halliday, M. A. K. (1961). 'Categories of the Theory of Grammar'. *WORD*. vol.17. 241-292. <<https://doi.org/10.1080/00437956.1961.11659756>> accessed 14th jan 2020
- Hansen, Björn & Haan, Ferdinand. (2009). *Modals in the Languages of Europe. A Reference Work*. Berlin; New York: Mouton de Gruyter.
- Heine, Bernd. *Cognitive Foundations of Grammar*. Oxford University Press. Oxford: 1997
- Hopper, Paul J. Traugott, Elizabeth C. *Grammaticalization*. 2nd ed. Cambridge University Press, Cambridge: 2009
- Hopper, Paul J. (1987). 'Emergent Grammar', *Berkeley Linguistic Society*, vol. 13, pp. 139-157. <<https://www.researchgate.net/publication/272816392>> accessed 19th dec 2019
- Hopper, Paul. (1991). 'On some Principles of Grammaticalization'. in E. C. Traugott, B. Heine (ed.) *Approaches to Grammaticalization*, pp. 17-35. Amsterdam/Philadelphia: John Benjamins. <www.researchgate.net/publication/284156121> accessed 19th dec 2019
- Krug, Manfred G. *Emerging English Modals, A Corpus-Based Study of Grammaticalization*. (Walter de Gruyter, Berlin: 2000)
- Ogawa, Hiroshi. 'OLD ENGLISH MODAL VERBS: Some Further Considerations'. *Neuphilologische Mitteilungen*, vol. 95, no. 4, 1994, pp. 403-413. *JSTOR*, <www.jstor.org/stable/43346039> accessed 14th jan 2020
- Palmer, Frank R. (1995). 'Negation and the Modals of Possibility and Necessity'. In *Benjamins*. (Typological Studies in Language 32). pp. 453-473
- Palmer, Frank R. *Mood and Modality*. Cambridge University Press, Cambridge: 2001
- Pullum, Geoffrey K. 'The Morpholexical Nature of English to-Contraction'. *Language*, vol. 73, no. 1, 1997, pp. 79-102. *JSTOR*, <www.jstor.org/stable/416594> accessed 19th dec 2019
- Quirk, Randolph et al. (1985). *A Comprehensive Grammar of the English Language*. London: Pearson Longman.
- Romano, Manuela. 'A PRELIMINARY SYNERGETIC ACCOUNT OF ENGLISH MODAL VERBS'. *Atlantis*, vol. 22, no. 2, 2000, pp. 151-166. *JSTOR*, <www.jstor.org/stable/41054996> accessed 19th dec 2019
- Traugott, Elizabeth Closs. (1982). 'From propositional to textual and expressive meanings: some semantic-pragmatic aspects of grammaticalization'. In *Winfred P. Lehman and Benjamins*. (Current Issues in Linguistic Theory 24). pp. 245-273
- Werner, Tom. 'Future and Non-future Modal Sentences'. *Natural Language Semantics* 14, no. 3 (2006): 235-55. <<http://www.jstor.org/stable/23753085>> accessed 14th jan 2020

9. Resumé

Předpoklad této bakalářské práce byl, že zkrácená slovesná fráze *gonna* prochází procesem gramatikalizace. Cíl této práce je tento proces ověřit a popsat porovnáním *gonna* se svou mateřskou frází *be going to*. Teoretická část postupně představila potřebné pojmy a teoretický rámec, které nastínily způsob změny *gonna* a druhy kategorií, kterým se postupem času přibližuje. Celá práce je ovlivněna přístupem k jazyku artikulovaný například Hopperem ve svém článku „Emergent Grammar“ (1987), který charakterizuje jazyk jako dynamický a přizpůsobivý systém, jehož struktura, není statická, ale neustále se měnící v každém okamžiku. Tento přístup byl uveden do kontextu lingvistických teorií, který takový náhled na jazyk sdílení a vymezen proti generativistickým přístupům, které vnímají obecnou strukturu jazyka za pevněji danou a často zmiňují jeho biologické základy. Jako první pojem byla představena modalita a anglický modální systém s důrazem na pomocná modální slovesa. Modalita byla představena v kapitole 2.2.1. podle Palmerova rozdělení (2001), ve které je v angličtině zastoupená epistémická (spekulativní, deduktivní, asumptivní), deontická (permissivní, obligativní, komisivní) a dynamická (abilitivní, volitivní) modalita. Anglický modální systém byl představen jak z diachronní, tak synchronní stránky. Představení modalit a anglického modálního systému bylo důležité pro pochopení kategorie „emergentních modálních sloves“ Manfreda Kruga (2000) v kapitole 2.2.4.. Tato kategorie obsahuje zkoumané *gonna* a jemu podobná slovesa jako *wanna*, *gotta*, *etc.* a předpokládá se, že jde o nově vznikající paradigma v rámci anglického systému modálních pomocných sloves. Důležitý poznatek z diachronního vývoje současných anglických modálních sloves je, že jejich syntaktické vlastnosti a význam jsou determinované jejich původem, stejně jako u ostatních lingvistických kategorií v jazycích. Není proto vhodné v rámci zkoumání *gonna*, či jiných „emergentních modálních sloves“ je srovnávat s centrálními modálními slovesy, byť jsou obě skupiny sloves v rámci anglického modálního systému. Argument prezentovaný například Quirkem (1985), že výrazy jako *gonna* s centrálními modálními slovesy sdílí jen málo syntakticko-sémantických vlastností, a proto nejde o plnohodnotná pomocná modální slovesa je lichý, jelikož jde o logický důsledek toho, že obě skupiny vznikaly v jiném čase z jiných jazykových jednotek.

Proces gramatikalizace je na příkladu „emergentních modálních sloves“ vidět třeba tím, že se redukováno formy sloves od svých mateřských konstrukcí jako *be going to*, *want to*, *have got to*, *etc.* neliší náhodně, ale systematicky se fonologicky redukuje do společné *cvə* formy. Kromě toho název této kategorie vypovídá o tom, že Krug předpokládá, že tato vznikající kategorie bude nabývat modálních významů. Takto popsaný proces gramatikalizace tak spočívá

v postupném získávání gramatického statusu a ztráty lexikálních vlastností, jako třeba konkrétního významu, což bývá doprovázeno fonologickou redukcí a růstem frekvence, jelikož gramatické významy jsou zpravidla abstraktnější, než ty lexikální, což umožňuje dané gramatikalizující se jednotce objevovat se ve více kontextech. Základy této teorie položil Meillet (CITACE), ale její moderní podobu rozpracovali mimo jiné především Bybee (), Hopper () a Traugott (). V kapitole 2.4 následoval stručný nástin o rozdílu mezi gramatikalizací a lexikalizací, která spočívá ve fosilizaci významu, ztráty produktivity určitého jevu v jazyce a obvykle ve fonetické redukcii. Lexikalizaci na příkladu *wanna* a podobných krácených tvarů hájil Pullum (), který ovšem nebral v potaz paradigmaticitu zkoumaných sloves, tj. jejich podobnou formální a funkční stránku, díky čemuž je výhodnější uvažovat spíše v gramatikalizačním rámci.

Hypotéza nastíněná v kapitole 3., jež je testována v praktické části, říká, že dochází k funkčnímu rozdělení mezi *gonna* a *be going to* v důsledku gramatikalizačního procesu. Takové rozdělení předpokládá hromadění budoucích funkcí u *be going to* a modálních u *gonna*, což vyplývá z jeho zapojení v “emergentních modálních slovesech”. Praktická část zahrnuje kvalitativní korpusovou analýzu provedených s pomocí dvou korpusů neformální mluvené angličtiny The Movie Corpus a The TV Corpus a obsahovala dvě části- kvantitativní a kvalitativní. V kvantitativní části byla měřena frekvence *be going to* a *gonna* pro tři poslední desetiletí, tj. 90., 00. a 10 léta. Během korpusového hledání musel být specifikovaný kontext pro frázi *be going to*, která musela být doplněná buďto slovesnou frází, nebo se musela vyskytovat na konci věty, jelikož bylo třeba získat pouze ty kontexty, ve kterých může nabývat budoucí a modální funkce a ne funkce pohybového slovesa jako v příkladu *She is going to church*. Korpusové hledání pro *gonna* nemuselo být takto vymezeno, jelikož nepřipouští jiné, než slovesné doplnění, případně elipsu. *Gonna* vykazovalo rostoucí trend frekvence, který byl potvrzen chi-2 testy mezi frekvencemi z jednotlivých dekad, což se shoduje s předpokladem gramatikalizační teorie, avšak *be going to* nemělo jasný trend růstu, nebo poklesu frekvence, byť její změny byly mezi jednotlivými dekadami statisticky významné. To nasvědčuje tomu, že *gonna* a *be going to* spolu funkčně nesoutěží, jinak by růst frekvence jednoho znamenal pokles frekvence druhého. Jejich frekvenci tak ovlivňují jiné, nebo více jiných faktorů. Kvalitativní část pracovala se vzorkem 100 konkordančních řádků s *gonna* z 90. let a 100 konkordančních řádků s *gonna* z 10. let. Cíl byl popsat distribuci budoucích a modálních funkcí *gonna* a změnu jejich diachronní distribuce, která by mohla podpořit, nebo vyvrátit hypotézu funkční divergence mezi *be going to* a *gonna* tím, že by se ukázalo, že v čase *gonna* získává modální funkce na úkor budoucích. Kvalitativní část však ukázala, že poměr budoucích a

modálních funkcí *gonna* je přibližně vyrovnaný a že se v tomto časovém období statisticky signifikantně nemění. Toto zjištění tak vylučuje hypotézu funkční divergence mezi *be going to* a *gonna*. Kvalitativní analýza také obsahovala deset konkordančních řádků z každého desetiletí a stručné komentáře ke každému společně se zvolenou modální, nebo budoucí funkcí. Celkově lze výsledky práce interpretovat, jak tomu bylo učiněno v kapitole 7, tak, že zatímco u *gonna* teoretická i praktická část bakalářské práce nasvědčují tomu, že u něj probíhá proces gramatikalizace, který se projevuje v nárůstu frekvence a fonologické erozi do podoby sdíleného paradigmatu v rámci „emergentních modálních slovesech“, tak co se týče funkcí *gonna*, objevují se u něj ve vyrovnané míře jak budoucí, tak i modální funkce. Takový závěr může přispět k lepšímu pochopení právě probíhajících změn v rámci anglického modálního systému a popisu anglické gramatiky. Jako příspěvek do diskuze může pomoci lépe určit místo a vlastnosti často opomíjeného slovesa *gonna* a celé kategorie „emergentních modálních sloves“, které jsou v gramatických popisech angličtiny přes svou rozšířenost v mluvené řeči často jen okrajovými fenomény, kterým není věnováno příliš prostoru.

10. Appendix

Appendix 1 – mixed (TV + Movie) random sample of 100 concordance lines with *gonna* from the 1990's from with modal or future labels

Year	Film/ TV Series	Concordance Line	Future/ Modal Function
1991	Quantum Leap	great. Now, the rest is gonna be a cakewalk. I'm gon na go back and see if I can spot the robber. Take it easy	EPISTEMIC deductive
1997	King of the Hill	- Fine! - Fine! Hey, wait, man. This ain't gon na work out... these little gals coming around here, flat out no,	EPISTEMIC deductive
1990	Quantum Leap	the mad ones. He's living life on the edge. He's just gon na take you down with him. How do you know? Because I've	EPISTEMIC deductive
1992	Forever Knight	lawn. [CHUCKLES] Look at that trunk, flat as a pancake. You're gon na have to use a torch just to open it. Come on, I	EPISTEMIC deductive
1994	The Scout	. Forget it. Strike! Whew! The kid can pitch. He's gon na finish college, too. What's he now, junior? Freshman.	EPISTEMIC deductive
1990	Tour of Duty	klicks south of the prison. Might be a hundred NVA there. We're gon na have to di di before the little suckers wake up. How long have	FUTURE
1999	Charmed	Maybe we should just talk later. - Okay. - You sure you're gon na be okay? - Yeah. Why? Phoebe, I know you think	DYNAMIC abilitive

1992	The Fresh Prince of ...	n't know which one to hit. Face it, will. You're not gon na find a job in there. What are you qualified to do besides flirt	EPISTEMIC deductive
1990	The Fresh Prince of ...	Butler With an Attitude. So anyway, Toni's coming over. We're gon na study for our history midterm together. - She really needs help. -	FUTURE
1995	Blue in the Face	gon na be good. Look at him. - Uh-huh. You're not gon na do anything anymore. - Here, it's yours. It's yours	DEONTIC obligative
1997	The Rolling Stones: ...	information is confidential. Look, I know he is dead. I'm not gon na say anything to anyone. I was just - - I am his --	FUTURE
1999	Freaks and Geeks	BILL, DALLASSUCKS. YOU SUCK. DALLASRULES. FACE IT, YOU'RE JUST GON NA LET LINDSAY END UP LIKE ONE OF THOSE PICTURES. FINE, I'LL	EPISTEMIC deductive
1995	Living in Oblivion	mother that I never felt she really, um, loved me. You're gon na yell at each other? Oh, I don't know. I'm	FUTURE
1998	Becker	, so hard to weed through the stupid ones. You - -? You gon na - -? You gon na help me or not? All right.	FUTURE
1990	The Golden Girls	you care. No. I'm saying buy genuine Q-Tips. If I'm gon na put a stick in my ear, I'd like a little cotton at	CONDITIONAL
1996	Fled	Get the medic in here! Now let's call on the man who's gon na call this race, - Matt Miller. - Thanks, Arlin. Well	FUTURE
1994	Class of Nuke 'Em Hi...	gon na be here all day. If you say, baby. We're gon na - - we're gon na - - we're - - we're	unable to assign a category due to being a poor example
1998	Boy Meets World	Angela. You invited Angela? Who said you could invite Angela? She's gon na kill me! Oh, my God. Shawn's gon na blame me	EPISTEMIC speculative/ deductive
1990	MacGyver	AND THAT TRUCK JUST WINCHED HERSELF UP. SO YOU FIGURE THAT PROPELLER SHAFT'S GON NA PULL US OUT OF THIS DITCH? YEAH, SOMETHIN' LIKE THAT.	EPISTEMIC speculative
1996	The Rich Man's Wife	liquidate them. A loan is always a possibility. Trust me. You're gon na be a very rich woman. Eventually. I'm sorry. I'm	EPISTEMIC speculative/ deductive
1995	The X-Files	doctor said that my husband can not leave this room. - I'm not gon na leave him here. - [Mulder] I'll stay with him. - You	DEONTIC commissive
1991	Dollman	FAT is going to hit the [...]! That's right. One of us gon na get goin'. But I already put my money in the machine.	EPISTEMIC speculative

1997	Love Jones	, shit. Hey, would you hold this for a second? Why you gon na give me your junk? Just be cool. Ah, Al Green.	CONDITIONAL
1997	The Butcher Boy	off, young Joe. You're gon na be sorry now. Who's gon na make me sorry? - Come on, please don't start any trouble	FUTURE
1999	Stargate SG-1	go somewhere... far away. The most remote dig I can find. We gon na see you again? At the funeral. Now if you'll excuse me	FUTURE
1996	Paradise Lost: The C...	were born, and I'm sure while I'm standin' there I'm gon na have to have other bodily functions let go upon your grave. I promise	FUTURE
1999	Tyrone	please. No insurance. Look, I'm just not sure the Sheriff's gon na give me my stuff back in time. - What? - Look,	EPISTEMIC assumptive
1999	Forces of Nature	amazing, because the things you find so exotic and interesting right now... are gon na be the same things that you're gon na hate me for in the	EPISTEMIC speculative
1991	Northern Exposure	. So-So you mean whatever my decision is, that's the thing that's gon na kill him? It could be. I mean, we're assuming that	EPISTEMIC assumptive
1996	NYPD Blue	? Yes. I'm gon na go talk to my brother. I'm gon na wash my face and go talk to him. - Donna, is the	FUTURE
1995	While You Were Sleeping	vegetable. Down and dirty. Are you gon na fold? You're not gon na fold. Ooh, he is staying in with a pair. Very impressive	FUTURE
1992	Married with Children	in here and tell us he failed. So let's practice what we're gon na say to him. The classics never die. Laugh at this, hyenas	FUTURE
1993	The Simpsons	? Ay! No es bueno. So thirsty. Eh, what are you gon na do? [Growls] [Water_Boiling] [Announcer] The following is a public service announcement. Excessive	FUTURE
1993	Six Degrees of Separ...	jam wrapped in cloth. English or French. I tell you what I'm gon na do. I pick a name, you tell me everything about' em	FUTURE
1999	Roswell	whispering? We're just, uh, waiting for Michael. - We're gon na go, um... - Bowl. - Why are you whispering? -	FUTURE
1992	Beverly Hills, 90210	gon na buy it. Brandon, please. All right, but it's gon na cost you bigtime. That's Dylan. Right on time. Cover for	EPISTEMIC deductive
1999	The Out-of-Towners	, Henry, please. Don't be so sensitive. Of course I'm gon na think about the children at a time like this. They're my kids	DEONTIC commisive
1993	Blood In, Blood Out	hit on that puto. - No, he's mine. His payback's gon na take time. I'm gon na make him sorry he ever fucked with	EPISTEMIC speculative

1992	Cheers	We'll pay you for your time. Excuse me, sir. This is gon na sound like an odd question, but... by any chance, were you	EPISTEMIC speculative
1996	NYPD Blue	a way to give' em up, oswaldo. if you think i'm gon na get between that - - i got enough death looking me in the face	CONDITIONAL
1996	Friends	I moved out. - Hey, while we're on that when are you gon na tell my sister you don't live here anymore? I think on some	FUTURE
1992	Zebrahead	been hangin' in the wrong' hood. Girl, you ain't never gon na mean shit to them. - Just a dash of color. - No	DYNAMIC abilitive
1994	Duckman: Private Dic...	Yah! I mean, uh... No, thank you. Aren't you gon na scream at me for something I haven't done, then refuse to fix	FUTURE
1992	Zebrahead	? But make sure you tell my cousin that. All right, I'm gon na do that. My man, I apologize. Get the fuck off me	FUTURE
1998	Hercules: The Legend...	broke. See ya later, fellas. Hey, wait. Aren't ya gon na stick around for the official announcement? Oh, no, you haven't	FUTURE
1994	The War	me and take us off the welfare. And at the end, I'm gon na be sure and put, " Life sure is a bowl full of cherries	FUTURE
1990	Memphis Belle	your finger down your throat. Stick your finger down your throat or I'm gon na do it for you. I feel better. You're not thinking of	CONDITIONAL
1992	Rage and Honor	! Baby? Baby? Come on out. Come on. No one's gon na hurt you. Yeah, right. Oh, Miss Fairfield. It's	DEONTIC commisive
1997	The Simpsons	and then it fell over. Wow. I wonder where all the rats are gon na go. [Chittering] [Moe] Okay, everybody tuck your pants into your socks.	FUTURE
1998	Dr. Katz, Profession...	I'm gon na have to get you married off. Ben, who's gon na marry me, though? Hmmm... I'm fishing for compliments here!	FUTURE
1997	The Devil's Advocate	to Kathy or anything like that! Because I know that's what you're gon na say. What about Kathy? What about your sister? What about her	EPISTEMIC speculative/ deductive/ assumptive
1991	Only Fools and Horse...	hospital... I've got a fair idea where their first port of call is gon na be! Yeah, me too. Well, they better not try anything	EPISTEMIC deductive
1996	Larger Than Life	middle name. And forward motion is our goal. I'm glad you're gon na get to know Jack Cochran. Corcoran! I'm over it. Hello	FUTURE
1995	Never Talk to Strangers	I've never addressed one of these big conventions. Come on. They're gon na love you. So good to have you back to your old self.	EPISTEMIC speculative/ deductive

			DEONTIC commisive
1999	Spring Forward	know, that's what it was. That's the story. You were gon na hear it sooner or later, so I figured... None of my business	FUTURE/ EPISTEMIC assumptive
1997	Home Improvement	much, but it will after we fix it up. We? We're gon na buy this place. We're gon na what? We're gon na	FUTURE
1999	Spring Forward	. - She's running towards the pond. No, darling. Mom's gon na be all right. It's okay. Talk to me. Come on	EPISTEMIC speculative/ deductive, DEONTIC commisive
1999	Sports Night	that happy. - - I'm happy. I thought maybe you wer e gon na say I shouldn't go,' cause I'm not r eally in	EPISTEMIC speculative
1996	Marshal Law	this block. I'm counting on you. I'm pretty sure you're gon na manage. Hey. Just don't forget how short four minutes is.	EPISTEMIC speculative/ deductive/ assumptive
1994	Tom & Viv	um and Dad are coming home. They'll kill me! What am I gon na tell them? For God's sake, Vivie, you can't!	FUTURE
1997	Hercules: The Legend...	n't move him. Well, you don't need to tell us you're gon na protect him, do you? By sunset, Cassus will be dead.	EPISTEMIC assumptive
1991	The Men's Room	I know. You know, it's only 26 weeks. It's not gon na make it. Don't you dare talk like that. Of course it	EPISTEMIC speculative
1999	Teaching Mrs. Tingle	" A "? You're the Oh. That teacher of yours isn't gon na know what hit her. One thousand faces... Hey. All look the	EPISTEMIC speculative
1991	For the Boys	ciao, babe. Jesus Christ! Get that light off me! You're gon na blind me! Excuse me. Miss Leonard's apartment? - Number 10	EPISTEMIC deductive
1991	Scenes from a Mall	is California, right? So it's community property anyhow. So everything's gon na be split down the middle. Use your head. And you know I	EPISTEMIC deductive
1999	Molly	she knows. She's not completely out of her. She knows I'm gon na be on her stir-crazy. I've got a surprise for you. You	EPISTEMIC deductive/ assumptive
1997	Home Improvement	for dropping in. - Mm-hm. Pretty complicated looking equipment. - Am I gon na get to try this? - Yes, indeedy, Tim. Now,	DYNAMIC abilitive
1999	Queer as Folk	Vince! Vince! Help me! Jesus Christ, help me. They're gon na kill me! They've got knives and everything. - They're gon	FUTURE
1995	JAG	drive me out of here and I'll stand by you. What are you gon na do, Lieutenant? Give me a reduced sentence? For starters. You	FUTURE/ EPISTEMIC speculative

1994	Law & Order	say we step over to the Cafe des Artistes? Well, we're not gon na quite book your limo yet, till we find out what you got.	FUTURE
1996	Basquiat	over here? More that way. What's with the wigs? I'm gon na give' em to people for Christmas. You think that's a good	FUTURE
1992	Shining Through	to give. Well, I'll take it sitting down. What I was gon na ask you to do is stand up, turn around, and close your	FUTURE
1999	H-E Double Hockey St...	Today is Wednesday, correct?. Did he happen to tell you he was gon na fly to San Francisco on a business trip?. Yes. That's	FUTURE
1998	The Larry Sanders Show	I don't recall Seeing this. Again, I apologize. What are we gon na do? I've done everything I can do. Mm-hmm. Larry...	FUTURE
1999	The Mating Habits of...	me? That you think I'm the perfect woman. You knew you were gon na lose, and you defended me anyway. You're incredible. I do	FUTURE
1993	Cop & 1	afraid we're out of cream. Gee. You know what? I'm gon na take a rain check on this... because I've got... ooh,	FUTURE
1994	Highlander: The Fina...	miss you. When are you coming home? Uh, y-you said you were gon na call me, remember? Well, in case you forgot, it's	FUTURE
1994	Trapped in Paradise	I'm just feelin' good. I'm feeling so good, I'm gon na call our Ma. Mrs. Anderson, can we call our mother?	FUTURE
1994	The Desperate Trail	What's your stupid idea? Okay- Six days from now... Wells Fargo's gon na be bringing in \$75,000. Now, with half that money... You can	EPISTEMIC speculative/ deductive
1999	Ally McBeal	like some little wimp -- Please, don't get me started. Am I gon na get a fair trial with her? I've called every swing class.	FUTURE
1996	American Buffalo	- He hasn't got a safe. - Yeah. - He's probably gon na keep em where? I don't know. In his desk drawer?	EPISTEMIC speculative
1998	Pi	... I'm gon na see it! - Get out! - I'm gon na understand it. Hey! Hey! Hey! - Who are you working	FUTURE/ DEONTIC commissive
1996	Mystery Science Thea...	sitting in front? We're sitting ducks in this thing. If we're gon na make the airport, we'll have to do it on foot. When	CONDITIONAL
1999	Lexx	incompatible! Oh, I'm really really glad to see you guys. You gon na kill her? Do you think that I should? I have no motivation	FUTURE
1997	Buffy the Vampire Sl...	middle of something extremely important. And... I'm sorry, but I'm gon na have to say good night now. I'm sorry to disturb you.	FUTURE

1997	Dante's Peak	to do it. - Okay, Harry. Bingo. If this mountain's gon na rock and roll, we're gon na know about it. So how	CONDITIONAL
1991	Beverly Hills, 90210	? Noon. But you don't have to. Nat, what am I gon na do, abandon you on Christmas? - I'll be here, all	EPISTEMIC speculative
1998	One True Thing	Why-Why... You gon na make coffee now? - Uh-huh. How are you gon na get to sleep tonight if... It really doesn't affect me. Mm-hmm	CONDITIONAL
1991	Beverly Hills, 90210	Coke? - Yeah, you bet. Here comes Jack. You girls are gon na love him. Hello! It's good to be back here at the	EPISTEMIC speculative/ deductive/ assumptive
1991	Father of the Bride	. - My dad told me. - That's-- When I thought I was never gon na see you again, I mean -- - If it wasn't for your	FUTURE
1999	The Talented Mr. Ripley	I know. I'm sorry, Peter. I'm lost. I'm gon na be stuck in the basement, aren't I? Aren't I?	EPISTEMIC speculative/ deductive
1998	You Lucky Dog	Come On, Come On. I'm Gon na Get It. I'm Gon na Get It. All Right, Lucky, We'll Play Again Tomorrow,	EPISTEMIC speculative/ deductive
1999	Stargate SG-1	I, uh... - No, no. Um... Sorry. You were gon na say? No, it's just that, uh... Well... -	FUTURE
1999	A Slight Case of Murder	ain't my racket. I don't know the rules. So I'm gon na play my own game. Starting right this minute, I'm gon na	FUTURE
1998	The Practice	I gave it to her husband. - What? No. We're not gon na be making any statements. Hurts me way more than it hurts you.	FUTURE
1992	Unforgiven	3377922 What's it gon na be, Angelina? It was Grogan - the filthiest, dirtiest, dumbest	FUTURE
1998	Firestorm	. I'll get on the crew. Yeah, right. I guess nature's gon na provide for that too, huh? No. That I will take care	EPISTEMIC speculative
1991	Married with Children	without you bringing up air conditioning? As soon as we get one they're gon na invent something new. I'll be damned if I'll have one in	CONDITIONAL
1993	What's Eating Gilbert...	it. - Nice job, Arnie. - Arnie! Now what are we gon na do? Arnie! Arnie. Come here. Come here! Come here	FUTURE
1999	Friends	competing. That can't lead to anything good. I think I'm just gon na step aside. I'll tell them that I won't audition. Joey	FUTURE/ EPISTEMIC speculative

Appendix 2 – mixed (TV + Movie) random sample of 100 concordance lines with *gonna* from the 2010's from with modal or future labels

Year	Film/ TV Series	Concordance Line	Future/ Modal Function
2013	Holy Rollers	Beautiful girls. Okay. No one's gon na find us. It's gon na be great. Listen to me. I'm glad you told me.	EPISTEMIC speculative
2014	Beyond the Lights	forward to Noni's performance tonight. Oh, yeah, I think it's gon na be amazing. Yeah, great. Hi, Officer Hero. Officer Hero	EPISTEMIC speculative
2015	All in Time	to get Rachel, so I'm gon na get Rachel and then we're gon na celebrate it together. If you really love her, you won't go	FUTURE
2011	Revenge	the most hated man in America and when the jury convicts him, you're gon na be an instant national hero. Your political future, Tom, is wide	EPISTEMIC deductive
2011	Leverage	someone calling the shots. And to grift on this scale, that leader's gon na be here to supervise. I know I would. You know, these	EPISTEMIC assumptive
2011	Bellflower	. You fucking asshole. You fucking asshole. Eat your breakfast. We're gon na go test it. We had to refill the liquor reservoir on the Biscuit	EPISTEMIC speculative
2016	Ice Age: Collision C...	table, two more smelly tables. Look at him. Oh, you're gon na love it. Who walks like that? Oh! Look at me.	EPISTEMIC speculative
2010	Jersey Shore	? Wow. Okay, you win. Uh, excuse me. We're gon na need a whole bottle. I saved a baby today. I'm not	EPISTEMIC speculative
2015	Memoria	m gon na bark at you, baby. Back the fuck up. You gon na get me? Yeah! Whoa'!.! Damn it! Let me	FUTURE
2015	The Stanford Prison ...	know. It's just I don't know what the guys and I are gon na do without you. [chuckles] Phil... No one's ever gon na take	EPISTEMIC speculative
2011	2 Broke Girls	you're a doody head. Never answer the wall. But what are you gon na do about it? You can't just keep lying to collection agencies.	FUTURE
2011	Army Wives	much. Ah, it was a group effort. I wonder what that's gon na be like. - What? - Well, Tanya. She's gon	EPISTEMIC speculative/ deductive
2013	Beneath	on, toss it, Johnny boy. - It's cool, he's gon na do it. - Alright, Johnny. - Toss it, Johnny boy	EPISTEMIC deductive
2010	Players	re lucky, Ken. There's one left. - If there's only gon na be one, that's a good one. I got that for Karen	OPTATIVE
2011	Criminal Minds: Susp...	re in. You and the unsub, locked eye to eye. Who's gon na blink... Him... or you? I'm here to report on the	EPISTEMIC speculative
2014	Lullaby	I promise. - I love you. - I love you. JONATHAN: Gon na make you proud, Dad, I swear. You watch over me,	DEONTIC commissive

2011	It's Always Sunny in...	. One quick question before I do, though. How bloody is this guy gon na be? Not bloody at all. Very bloody. What? He's	EPISTEMIC speculative/ deductive
2014	Locker 13	tomorrow when the lottery office opens. I can't work magic. He's gon na come through that door, and he's gon na put a bullet in	EPISTEMIC speculative/ deductive
2011	A Good Old Fashioned...	No! Are you kidding me? Guys, it's Katie. She's gon na be fine in like an hour. I just realized I'm really hammered	EPISTEMIC speculative/ deductive
2011	Criminal Minds	, 007? No, but you should go through the city. 66 is gon na be miserable right now. We'll get there. Oh, before Doyle	EPISTEMIC assumptive
2011	The Chicago Code	find out. Shh. He's not gon na move them, he's gon na kill them. Police! Drop the gun! Drop the gun! Get	EPISTEMIC deductive
2014	5 to 7	lover. Your body expresses beautifully what's in your heart. I'm just gon na write that down. Have none of the other women you've been with	FUTURE
2012	Revenge for Jolly!	can't. Your hand. No, I can handle it. I was gon na take the big one. Come on, just let me have the big	FUTURE
2014	Extraterrestrial	I die?? When I die and they lay me to rest?? Gon na go to the place that's the best?? Prepare yourself, you	EPISTEMIC speculative
2012	Todd and the Book of...	we done here? Alright -- You're free to go. But I'm gon na be keeping my eye on you. Todd. Victim! SLAM! See	FUTURE
2010	Leverage	these things in person. Eliminates the room for error. So, you're gon na have to come to me for your payment. Nate, no. Be	FUTURE
2012	Chronicle	be fine. You're gon na be all right, okay? I'm gon na get you help, okay? All units, respond Code 4 to Denny	FUTURE
2011	Cowboys & Aliens	say it to his face if he was here! Colonel Dolarhyde. I'm gon na tell you something, boys. Money makes you soft. Where the hell	FUTURE
2012	Escape	traveling with a mobile clinic, practicing basic healthcare, disease prevention. I'm gon na be part of the surgical team, and Kim will do all of the	FUTURE
2010	Undercover Boss	. Mm-hmm. If the employees who make this great stuff think they're not gon na get to make it much longer, then you got ta rethink everything you	EPISTEMIC speculative
2015	Western Religion	partial to sleep at this hour. Count me in. Prince? You just gon na bat your eyes or do you have the metal? More than you can	EPISTEMIC speculation

2012	GCB	. He lied to me. He is here in Juarez, and I'm gon na find him and find out why. I'm coming with you. Uh	DEONTIC obligative
2010	Beatdown	not such a bad guy. I know. He's not. I'm gon na go. Are you okay? Yeah, it was my mom's ring	FUTURE
2015	The Stanford Prison ...	all right. Listen, what I'm gon na do is, we're gon na clear out of this room, get a nice meal brought in here.	FUTURE
2015	Demonic	EARLIER Are you okay? John? John? Are you okay? Are you gon na answer my brother? Yeah. Sorry man, what was the question?	FUTURE
2011	Criminal Minds	see them girls? God, what were their names? You thought you were gon na get laid. Ha ha ha! And that chick. Puked herself so	FUTURE/ EPISTEMIC speculative
2011	Pan Am	4256648 Previously on " Pan Am "... - You're gon na meet Kennedy? - Tomorrow in Berlin. The secret police, they know	FUTURE
2015	Pirate's Code: The A...	power would we need? A hundred terawatts. Great Scott! Where are we gon na get that kind of power? (Max) What good would it do	FUTURE
2012	Tooth Fairy 2	why don't you guys set up for some soccer over here? I'm gon na go check on Mr. Larry. Okay, ready. BROOKE: Whoa	FUTURE
2012	House M.D.	n't distracted. And I think that, if there's any chance I'm gon na walk again, it's because Dr. House is a genius. How	DYNAMIC abilitive
2011	Hellcats	don't want to die! What are we gon na do? We're gon na die, we're gon na die! Positive outcomes only. Hellcats,	EPISTEMIC speculative
2011	House M.D.	the time. But you answer pages, you sleep. I know I'm gon na regret doing this, but I'll ask anyway. Is there anything I	EPISTEMIC deductive
2011	Burn Notice	I'm the one whose entire inventory is off-limits. I warned you what was gon na happen if you pulled out of the deal. Oh, you don't	CONDITIONAL
2010	CSI: Crime Scene Inv...	me, but... sure, I suppose it's possible. Ecklie's not gon na like us running around all over the place. Us? Yeah, man	EPISTEMIC assumptive
2010	iCarly	Yow-yow. All right, now we just got to figure out how we're gon na make enough of them to... [Knock_on_door] Oh, hang on. Oww.	DYNAMIC abilitive
2010	House M.D.	. Slow down. We're in a car in broad daylight. What's gon na happen? You honestly think he doesn't have a gun in that car	EPISTEMIC speculative
2011	Marcel's Quantum Kit...	look better. - Thanks for coming. - You're welcome. That's gon na make it look kind of cool. Should we try one? For the	EPISTEMIC deductive

2012	The Vow	though. What if she doesn't remember me? Then what? She's gon na remember you. She's gon na remember all of us. We're	EPISTEMIC deductive/ DEONTIC comissive
2013	Nothing Left to Fear) (screaming) (banging) (Christopherwhimpering) Rebecca: What are we gon na do? Noah: Just keep looking. Oh, God. There she	FUTURE
2010	Are We There Yet?	the bar, drinking beer, watching the game. Yeah, but she's gon na want to know why I had to watch the game here. Because Booty what happened. Nothing happened. You're dating my roommate. I'm not gon na let a stupid mistake hurt her. It didn't feel like a mistake	EPISTEMIC assumptive
2010	Hellcats	re a therapist. I can say that kind of shit and you're not gon na go to the police, right? I mean, you know what I	FUTURE
2010	Nip/Tuck	! - I had that. - Oh, did you? Or were you gon na let it fall to the ground again? What is your problem with me	DEONTIC obligative
2011	Grey's Anatomy	. It's day three, and we're still talking. So you are gon na help us. What the fuck! - No, no, no,	FUTURE/ DYNAMIC volitive
2010	The Crazies	. - Uh-huh. - I don't know how much longer we're all gon na get to be together like this. Okay, so get crunked, motherfuckers	FUTURE
2011	Trail of Blood	then she eats lunch. We are so making her a javelina. She's gon na have a scarlet pig slapped on her By recess tomorrow. (laughter)	EPISTEMIC speculative
2012	GCB	Mom? Oh, you know... She's just got headaches. Is she gon na die? No, Jase. She's not going to die. How	FUTURE
2012	Tiger Eyes	song.? I drive all night down the...? Hey, I'm gon na dance with lewis. Will you watch savannah? Sure.? and I	EPISTEMIC speculative
2010	Hellcats	DROPPING OUT OF SCHOOL WILL BE LIKE, " FUCK SCHOOL. " I'M GON NA SELL DRUGS FOR THE REST OF MY LIFE, " AND THEY'LL BE	FUTURE
2014	Neal Brennan: Women ...	she would cry, because I was just terrified of the fact that I was gon na be five or six hours alone with our dad when we got home from right over here. Bring these over to our station, please. I'm gon na grab all the food. First thing I would do, get the peppers	EPISTEMIC speculative
2011	Buck	you didn't get your apology, huh? I don't think there's gon na be an apology. But she remembers me. Oh, yeah, and	FUTURE
2010	Hell's Kitchen		FUTURE
2010	You Again		EPISTEMIC deductive

2010	The Deep End	have to care about the things That she cares about - intensely. You're gon na have to draw her in. Yeah, I think that's probably a	FUTURE
2011	Being Erica	n't and I shouldn't have to. I'm sorry. Sorry is not gon na cut it. You tell me! Please, Dr. Fred, I	FUTURE
2010	Ramona and Beezus	school can be a real handful. Oh! But I'm thinking I'm gon na take it. Oh, my gosh! That's better than a fireman	EPISTEMIC speculative
2010	Modern Family	, And they need to try to live up to that person. They're gon na fall short, But better they fall short of the fake you Than the	EPISTEMIC deductive/ assumptive
2011	The Closer	back to what it used to be. [Chuckles] [Sighs] Look, the future is gon na be what it is. In the meantime, try not to freak out	EPISTEMIC assumptive
2010	The Good Wife	us a minute? Mom... It's gon na be okay. It's gon na be okay. Listen, listen, they were just arguing the opposite!	EPISTEMIC speculative/ deductive
2011	Our Idiot Brother	guys are gon na be great. My work here is done. Who's gon na watch sci-fi with [Jeremy]? I can't always do it. - Who	FUTURE
2012	The Baytown Outlaws	he wouldn't have to listen to that. Hey, Mac, I'm gon na give it a rest for a second, all right? I'm looking	FUTURE
2011	Catch .44	was gon na wait for you three bitches to be dead and then he was gon na waltz in here and he was gon na shoot me for my money!	FUTURE
2011	Brief Reunion	to it. Lea: Oh god. 10:30 already? Aaron: I'm gon na Lea: Oh. Aaron, don't start again. Aaron: I	FUTURE
2010	Miami Medical	yours. Well, it's time for us to bone up. I'm gon na have to start a craniotomy to relieve the pressure inside his skull. Hope	FUTURE
2016	Good Kids	tennis lesson, I'm on call. What do you mean, you're gon na go do a private tennis lesson... When you're... you've been	DEONTIC obligative
2014	Sin City: A Dame to ...	says I'll be very ugly before I die. Ava, you're not gon na die. You're coming with me. It's hopeless. He lets	EPISTEMIC deductive
2011	Sons of Anarchy	Tarascreaming) (man_grunting) (tires_screaching) You didn't know that Jax was gon na be with her, did you? CLAY: Enough! GEMMA: You	FUTURE
2014	Little Accidents	rough time for you, Bill, we both know that. but you're gon na have to be gone by the end of the month. And then we	FUTURE
2010	Eat Pray Love	? One hundred and one or maybe 64. Don't remember. This is gon na take me the rest of my life. He make you pretty, find	EPISTEMIC speculative

2014	Million Dollar Arm	to. - Hey guys, come on, let's go. We're gon na be late. - Hi, Brenda. - Hi. Have a good	EPISTEMIC deductive
2010	Brothers & Sisters	cheating. No, you're excusing it. You know what? I am gon na go tonight because I live there. It's where my office is.	FUTURE
2014	Perfect Sisters	I counted 7 pawn shops... and 11 liquor stores. No. You're gon na love it. It's got way more space than our other place.	EPISTEMIC deductive
2012	Smitty	Don't what me. You're giving him the guitar. I'm not gon na just give this kid a guitar. If he wants a guitar he's	FUTURE
2010	Party Down	. Ahh! Mandy, I got it! Didn't I say I was gon na get it?! I got it, I got it!	FUTURE
2017	Bad Frank	You do your thing. I'm not gon na watch. I'm not gon na listen. I'm gon na sit over here and sing a happy tune	FUTURE
2011	MythBusters	and see if it gets split down the middle. Do I think that's gon na happen? Sure. Absolutely. If we lived in a cartoon. "	EPISTEMIC speculative
2012	Ringer	you the whole truth about Tyler Barrett. It was an accident. It's gon na be over soon. We have the flash drive. What? I gave	EPISTEMIC deductive
2013	Enter the Dangerous ...	you do with my dog, you son of a bitch? You're not gon na get away with this, you fucking freak! Gary. You scared the	EPISTEMIC speculative
2012	Hawaii Five-0	I know Rachel's not gon na forgive you for this. So you're gon na lose the only thing that means anything to you. You're gon na	EPISTEMIC deductive
2010	Dinner for Schmucks	n't want. All right, so we cannibalize the company..., who's gon na buy the pieces? Oh, no, we're not gon na strip	EPISTEMIC speculative
2011	In Plain Sight	me and they liked me. So will these people. Of course they're gon na like you. Plus, you'll blow' em away with your half-stitched	EPISTEMIC deductive/ DEONTIC comissive
2011	Treme	You know I love his stuff. - All right, well, I'm gon na roll home, me. - Be cool. - Be safe.?	FUTURE
2011	Desperate Housewives	are legal documents. Aren't they binding? Yes and no. You're gon na have to do a little better than " yes and no. " Yes	FUTURE
2012	Leverage	to me very carefully, okay? You ever pull this again, I am gon na personally make sure you're off this team,' cause I'm gon	CONDITIONAL
2010	Life Unexpected	where you want to be. I know, but you really think it's gon na work, me producing? We'd make it work. Look, I	EPISTEMIC speculative
2010	Grey's Anatomy	performing your surgery today. She is the best of the best. You're gon na like her. Um, I have a couple thingsd I want to discuss	EPISTEMIC deductive

2011	Happy Endings	- - we're both what? Super cool dudes. Pause. You were gon na say " gay. " Mnh-mnh. It all makes sense now. You	EPISTEMIC speculative
2011	10 Years	one minute. I'm gon na talk to her. I'm not even gon na say goodbye.' Cause I'll see you in a minute. (FUTURE
2013	Dead in Tombstone	got a better idea now. I'm gon na stay here and I'm gon na take over this town. And you can go to hell. Put your	FUTURE
2012	Sleepwalk with Me	d you take off your glasses? - Just' cause if we're really gon na do this, I don't want to be able to see you.	CONDITIONAL
2014	Stretch	on him. No straight tails because if he's a cop, he's gon na sniff' em out. - Copy that. - (DEVICEBEEPING) (CONDITIONAL